

LANDSCAPE DESIGN PRINCIPLES

TO COMPLEMENT AND ENHANCE THE EXISTING STREETScape

- PROPOSED LANDSCAPE DESIGN TO COMPLEMENT THE HERITAGE ITEM 'BRUNOY'
- MATURE CANOPY STREET TREES (OPHISTODON CONFERTUS) TO BE RETAINED + PROTECTED TO MAINTAIN EXISTING STREETSCAPE
- TRADITIONAL HERITAGE SPECIES DESIGNED TO SCREEN RESIDENTS' GARDENS + ENHANCE THE PEDESTRIAN EXPERIENCE FROM MURRAY + BEECROFT ROADS
- NORTHERN BOUNDARY PLANTING FRAGMENTED TO PROVIDE VIEWS INTO HERITAGE ITEM FROM BEECROFT ROAD.

TO REDUCE THE IMPACT OF THE BUILT FORM

- CANOPY TREES AND UNDERSTORY PLANTING PROPOSED TO PROVIDE SCALE AND SOFTEN THE BUILT FORM, PRESENTING THE DEVELOPMENT WITHIN A VEGETATED SETTING AND MINIMISING THE VISUAL IMPACT
- ALL CARPARKING IS PROPOSED TO BE PROVIDED UNDERGROUND TO REDUCE THE VISUAL IMPACT OF DEVELOPMENT AND REDUCE IMPACT ON ADJACENT PROPERTIES

TO PROTECT EXISTING TREES

- ALL TREES IDENTIFIED AS SUITABLE FOR RETENTION BY PROJECT ARBORIST SHALL BE RETAINED AND PROTECTED TO PROVIDE FUTURE AMENITY
- NO HIGH RETENTION VALUE TREES PROPOSED FOR REMOVAL. ONE TREE - ENVIRONMENTAL WEED TREE (T380) - PROPOSED FOR REMOVAL
- MATURE CANARY ISLAND + CABBAGE TREE PALMS PROPOSED TO BE TRANSPLANTED WITHIN THE GARDENS
- POROUS PAVING PROPOSED UNDER CANOPY OF TREE 54 ULMUS PARVIFOLIA IN ACCORDANCE WITH ARBORIST RECOMMENDATIONS

TO PROTECT + ENHANCE LISTED HERITAGE ITEM 'BRUNOY'

- GARDENS WITHIN THE CURTAGE OF THE HERITAGE ITEM ARE DESIGNED TO COMPLEMENT THE FEDERATION ARCHITECTURAL STYLE WITH THE INCLUSION OF CHARACTERISTIC FEDERATION GARDEN ELEMENTS

- A VARIETY OF FLOWERING SPECIES - BULBS, LILIES + PERENNIALS - BIRD BATH + FOUNTAIN - ORNAMENTATION - ARBOURS, PERGOLA
- TRADITIONAL SCENTED FLOWERS - DECIDUOUS TREES + PINES - WELL DEFINED BORDERS - CURVED PATHWAYS - LAWNS, HEDGES + TOPIARIES
- EXOTIC PALMS - FERNERIES

TO CREATE A LANDSCAPE AS AN EXTENSION OF INTERNAL SPACES

- GARDENS AND LAWN AREAS DESIGNED TO ENCOURAGE GENTLE EXERCISE AND FACILITATE FLEXIBLE OUTDOOR RECREATION WITH VISITORS
- EXTENDED VIEWS INTO THE GARDEN HAVE BEEN CONSIDERED TO ENHANCE DAILY LIFE FOR LESS ACTIVE RESIDENTS
- INTERNAL COURTYARDS OFFER LEAFY OUTLOOKS FROM PRIVATE RESIDENTIAL ROOMS AND EASILY ACCESSIBLE ALFRESCO AREAS

TO MAINTAIN NEIGHBOUR PRIVACY + AMENITY

- SCREEN PLANTING RETAINED + SUPPLEMENTED ALONG BOUNDARIES WHILE PERMITTING PASSING GLIMPSES INTO THE HERITAGE GARDEN

TO ENHANCE THE GARDEN EXPERIENCE FOR RESIDENTS

- SPECIES SELECTION HAVE BEEN MADE FOR SITE CONDITIONS AND TO PROVIDE A STIMULATING RANGE OF FLOWER AND FOLIAGE
- TEXTURES AND COLOURS TO ENCOURAGE RESIDENTS' USE OF LANDSCAPE SPACE
- NATIVE AND EXOTIC SPECIES HAVE BEEN INCLUDED FOR INTEREST, SCENT, BIRD ATTRACTION, SEASONAL VARIATION + NOSTALGIA
- LANDSCAPE FEATURES INCLUDE:

- LAWN AREAS + LANDSCAPED GARDEN PATHWAYS - BIRD ATTRACTING NATIVE SPECIES - TRADITIONAL ARBOURS + PERGOLA
- OUTDOOR SEATING IN SUN AND SHADE - WATER FEATURE - TRADITIONAL FEDERATION GARDEN
- TEAR ROUND COLOUR - PALMS, FERNS, FLOWERING TREES + SHRUBS - COMMUNAL BBQ + ALFRESCO DINING

TO PROVIDE FOR ACCESSIBLE USE OF GARDEN

- ACCESSIBLE PATHWAYS HAVE BEEN PROVIDED AS REQUIRED BY RELEVANT GUIDELINES TO ENSURE MAXIMUM POTENTIAL FOR RESIDENT USE OF OUTDOOR SPACES
- SAFETY MEASURES INCLUDING SURFACE SELECTION, GENTLE GRADIENTS, APPROPRIATE SEATING, HANDRAILS + FENCING WILL BE INCORPORATED

TO ENCOURAGE INFORMAL COMMUNITY INTERACTION

- EXTENDED COMMUNAL LAWNS AND GARDENS
- VARIETY OF ACCESSIBLE OUTDOOR SPACES FOR FLEXIBLE GROUP ACTIVITIES
- COMMUNAL BARBECUE FACILITIES AND ALFRESCO DINING AREA

TO PROVIDE SAFE ENVIRONMENT FOR RESIDENTS WITH DEMENTIA

- WESTERN SUNKEN COURTYARD DESIGNED FOR CONVENIENT ACCESSIBLE ACCESS FOR SUPERVISED OUTDOOR ACTIVITIES FOR DEMENTIA PATIENTS WITHIN A SECURE SPACE. NORTHERN LAWNS SUITABLE FOR SUPERVISED STROLLING AND SITTING

TO COMPLY WITH DESIGN PRINCIPLES OF SEPP

- PROPOSED LANDSCAPE AIMS TO MEET DESIGN PRINCIPLES OF THE RELEVANT SEPP (HOUSING FOR SENIORS OR PEOPLE WITH A DISABILITY) 2004
- REFER TO ARCHITECTURAL AREA CALCULATION PLAN DA-11 FOR DEEP SOIL AND SITE CALCULATIONS

landscape elements



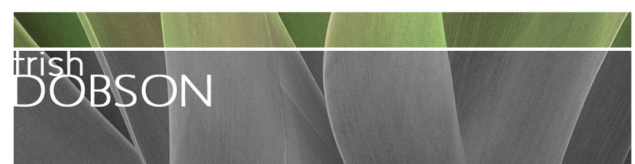
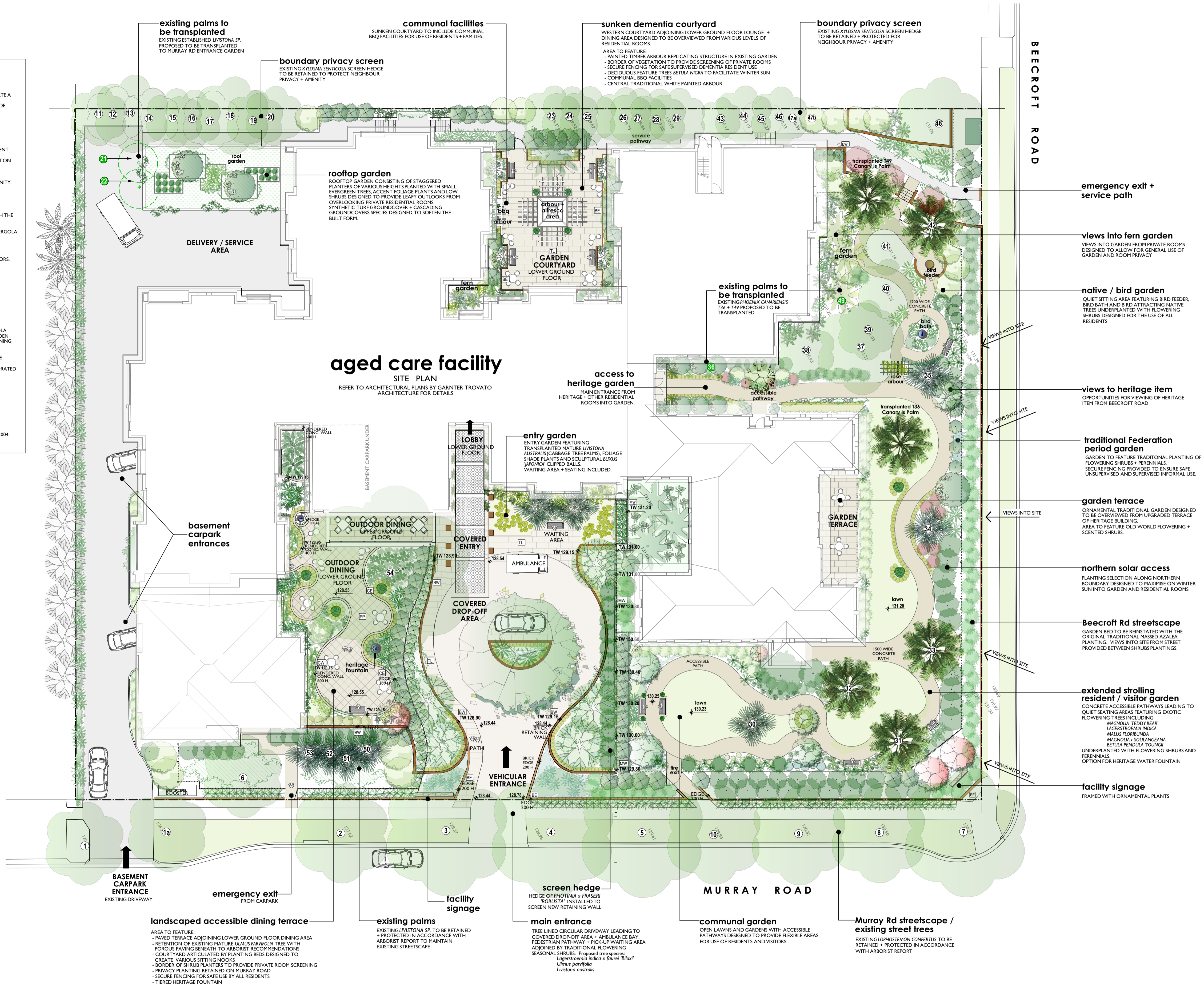
SITE LANDSCAPE PLAN

SCALE 1:200 @ A1
REFER TO SHEET L03, L04 + L06 PLANTING PLANS FOR FULL PLANTING DETAILS
REFER TO ARCHITECTURAL PLAN DA-11 AREA CALCULATIONS PLAN FOR LANDSCAPE AREA CALCULATIONS

NOTE
PLAN TO BE READ IN CONJUNCTION WITH:
ARCHITECTURAL PLANS BY GARTNER TROVATO ARCHITECTS
ARBORESCULPTURAL IMPACT ASSESSMENT BY PAINTREE CONSULTING

LEGEND

PROPOSED LEVELS RL 11.97	RED BRICK GARDEN RETAINING WALLS (with brick header colour to match existing)	SANDSTONE TILES IN COURTYARDS + PATHWAYS	LAWN AREA 'SAPPHIRE' BUFFALO	PROPOSED TOP OF WALL LEVELS +TW 120.80	EXISTING PALMS TO BE TRANSPLANTED
EXISTING SPOT LEVELS P1.50	RENDERED MASONRY RETAINING WALL (Mid Grey-Brown pigment, Safety fence above)	1500mm TINTED CONCRETE PATH IN HERITAGE GARDEN (Light Grey-Brown pigment, Finished flush with lawn)	SYNTHETIC TURF ON SERVICE AREA ROOFTOP	COVERED ENTRANCE WALKWAY	WATER FEATURE
BOUNDARY	1500mm HIGH TINTED CONCRETE EDGE - Light Grey-Brown pigment on match stone (Cafe Court)	NEW CONCRETE DRIVEWAY	POROUS PAVING IN GARDEN COURT TO ARBORIST REPORT	TRADITIONAL PERGOLA STRUCTURE IN SUNKEN COURT (White painted timber with open + covered seating)	BIRD FEEDER
EXISTING TREES TO BE RETAINED	200mm HIGH RED BRICK GARDEN EDGE (with bullnose header to match existing edge on Beecroft Rd)	1000mm HIGH RED BRICK STRETCHER GARDEN EDGE (100mm wide in Sunkken Court)	TRADITIONAL ARBOUR (White painted timber detailed to reflect existing arbour to be demolished)	1.2 - 1.5m HIGH BLACK METAL PALLISADE FENCE (to match existing)	INFORMAL GARDEN SEATING



trish dobson landscape architecture
344 MARINE PARADE, AVALON NSW 2107
0408 983020
trish@trishdobson.com.au
TRISH DOBSON
REGISTERED LANDSCAPE ARCHITECT ASSA HORTICULTURIST
A98 57 241 496 158

DEVELOPMENT APPLICATION
CHELTENHAM HOUSE
Proposed Aged Care Facility
for Thompson Health Care
144-146 BEECROFT RD. BEECROFT NSW

LANDSCAPE SITE PLAN
1:200 @ A1 SCALE
17.12.20 DATE
2010 JOB
DA ISSUE
1 of 6 SHEET
2010 / DA-L01 DWG

TREE RETENTION SCHEDULE

TREE NO	SPECIES	COMMON NAME	D.B.H.	Height	Spread	Landscaping Significance	STATUS
T1	CALLISTEMON VIMINALIS	WEeping BOTTLEBRUSH	250.250mm	5m	7m	HIGH	Retain + Protect
T1a	LOPHOSTEMON CONFERTUS	BRUSHBOX	500mm	7m	8m	V/LOW	Retain + Protect
T2	LOPHOSTEMON CONFERTUS	BRUSHBOX	500mm	8m	8m	HIGH	Retain + Protect
T3	LOPHOSTEMON CONFERTUS	BRUSHBOX	650mm	10m	10m	HIGH	Retain + Protect
T4	LOPHOSTEMON CONFERTUS	BRUSHBOX	700mm	10m	8m	HIGH	Retain + Protect
T5	LOPHOSTEMON CONFERTUS	BRUSHBOX	800mm	11m	10m	HIGH	Retain + Protect
T6	JACARANDA MIMOSIFOLIA	JACARANDA	300mm	9m	6m	HIGH	Retain + Protect
T7	LOPHOSTEMON CONFERTUS	BRUSHBOX	800mm	12m	12m	HIGH	Retain + Protect
T8	LOPHOSTEMON CONFERTUS	BRUSHBOX	650mm	7m	9m	HIGH	Retain + Protect
T9	LOPHOSTEMON CONFERTUS	BRUSHBOX	650mm	7m	8m	HIGH	Retain + Protect
T10	LOPHOSTEMON CONFERTUS	BRUSHBOX	550mm	8m	8m	HIGH	Retain + Protect
T10a	CAMELLIA SASANQUA x II	CAMELLIA HEDGE	150xmm	4m	3m	MED	Retain + Protect
T11	XYLOSMA SENTICOSUM	SHINY XYLOSMA	50mm	4m	3m	MED	Retain + Protect
T12	XYLOSMA SENTICOSUM	SHINY XYLOSMA	150mm	4m	3m	MED	Retain + Protect
T13	XYLOSMA SENTICOSUM	SHINY XYLOSMA	200.100mm	6m	4m	MED	Retain + Protect
T14	XYLOSMA SENTICOSUM	SHINY XYLOSMA	200mm	6m	4m	MED	Retain + Protect
T15	XYLOSMA SENTICOSUM	SHINY XYLOSMA	200mm	6m	4m	MED	Retain + Protect
T16	XYLOSMA SENTICOSUM	SHINY XYLOSMA	200mm	6m	5m	MED	Retain + Protect
T17	XYLOSMA SENTICOSUM	SHINY XYLOSMA	100.100	6m	5m	MED	Retain + Protect
T18	XYLOSMA SENTICOSUM	SHINY XYLOSMA	150mm	6m	5m	MED	Retain + Protect
T19	XYLOSMA SENTICOSUM	SHINY XYLOSMA	150mm	5m	4m	MED	Retain + Protect
T20	XYLOSMA SENTICOSUM	SHINY XYLOSMA	200.100mm	5m	4m	MED	Retain + Protect
T21	LIVISTONA AUSTRALIS	CABBAGE TREE PALM	300mm	3m	4m	MED	Transplant on Site
T22	LIVISTONA AUSTRALIS	CABBAGE TREE PALM	300mm	4m	4m	MED	Transplant on Site
T23	XYLOSMA SENTICOSUM	SHINY XYLOSMA	200mm	7m	4m	MED	Retain + Protect
T24	XYLOSMA SENTICOSUM	SHINY XYLOSMA	200mm	6m	4m	MED	Retain + Protect
T25	XYLOSMA SENTICOSUM	SHINY XYLOSMA	100.100mm	6m	4m	MED	Retain + Protect
T26	XYLOSMA SENTICOSUM	SHINY XYLOSMA	150mm	6m	3m	MED	Retain + Protect
T27	XYLOSMA SENTICOSUM	SHINY XYLOSMA	200mm	6m	4m	MED	Retain + Protect
T28	XYLOSMA SENTICOSUM	SHINY XYLOSMA	200mm	6m	4m	MED	Retain + Protect
T29	XYLOSMA SENTICOSUM	SHINY XYLOSMA	200mm	6m	4m	MED	Retain + Protect
T30	WASHINGTONIA ROBUSTA	COTTON PALM	500mm	25m	3m	V/HIGH	Retain + Protect
T31	PHOENIX CANARIENSIS	KENTIA PALM	650mm	8m	6m	V/HIGH	Retain + Protect
T32	PHOENIX CANARIENSIS	CABBAGE TREE PALM	700mm	9m	7m	V/HIGH	Retain + Protect
T33	PHOENIX CANARIENSIS	KENTIA PALM	750mm	13m	7m	V/HIGH	Retain + Protect
T34	WASHINGTONIA ROBUSTA	COTTON PALM	400mm	22m	3m	V/HIGH	Retain + Protect
T35	WASHINGTONIA ROBUSTA	COTTON PALM	450mm	22m	4m	V/HIGH	Retain + Protect
T36	PHOENIX CANARIENSIS	CANARY IS PALM	650mm	12m	7m	V/HIGH	Transplant on Site
T37	THUJA STANDISHII	JAPANESE ARBOR-VITAE	500mm	7m	6m	HIGH	Retain + Protect
T38	CAMELLIA SASANQUA	CAMELLIA	150mm	3m	3m	HIGH	Retain + Protect
T38a	LIGUSTRUM LUCIDUM	LARGE LEAF PRIVET	150mm	3m	3m	LOW	REMOVE (Weed)
T39	CAMELLIA JAPONICA	CAMELLIA	150mm	3m	3m	HIGH	Retain + Protect
T40	CAMELLIA JAPONICA	CAMELLIA	350mm	5m	3m	HIGH	Retain + Protect
T41	CAMELLIA JAPONICA	CAMELLIA	150.200mm	4m	4m	HIGH	Retain + Protect
T42	PHOENIX CANARIENSIS	CANARY IS PALM	600mm	8m	6m	V/HIGH	Retain + Protect
T43	XYLOSMA SENTICOSA	SHINY XYLOSMA	200mm	6m	4m	MED	Retain + Protect
T44	XYLOSMA SENTICOSA	SHINY XYLOSMA	200mm	7m	5m	MED	Retain + Protect
T45	XYLOSMA SENTICOSA	SHINY XYLOSMA	200mm	6m	4m	MED	Retain + Protect
T46	XYLOSMA SENTICOSA	SHINY XYLOSMA	200.100mm	7m	5m	MED	Retain + Protect
T47	XYLOSMA SENTICOSA	SHINY XYLOSMA	200mm	6m	4m	MED	Retain + Protect
T47a	XYLOSMA SENTICOSA	SHINY XYLOSMA	200mm	6m	5m	MED	Retain + Protect
T47b	MURRAYA PANICULATA	ORANGE JESSAMINE	250mm	5m	4m	MED	Retain + Protect
T48	PHOTINIA ROBUSTA	PHOTINIA	450mm	6m	8m	MED	Retain + Protect
T49	PHOENIX CANARIENSIS	CANARY IS PALM	650mm	8m	6m	V/HIGH	Transplant on site
T50	LIVISTONA AUSTRALIS	CABBAGE TREE PALM	350mm	4m	4m	MED	Retain + Protect
T51	LIVISTONA AUSTRALIS	CABBAGE TREE PALM	300mm	2m	2m	MED	Retain + Protect
T52	LIVISTONA AUSTRALIS	CABBAGE TREE PALM	300mm	3m	3m	MED	Retain + Protect
T53	LIVISTONA AUSTRALIS	CABBAGE TREE PALM	350mm	4m	3m	MED	Retain + Protect
T54	ULMUS PARVIFOLIA	CHINESE ELM	450mm	13m	14m	HIGH	Retain + Protect

TREE RETENTION AIMS

THE LANDSCAPE DESIGN FOR THE SITE AIMS TO RETAIN EXISTING TREES WHEREVER POSSIBLE WITH A PRIORITY BEING:

- TO REMOVE ONLY THOSE TREES LOCATED WITHIN THE FOOTPRINT OF THE PROPOSED BUILDING OR DRIVEWAY OR THOSE TREES DEEMED BY THE PROJECT ARCHITECT TO BE UNSTABLE BEYOND THEIR USEFUL LIFE EXPECTANCY / SENESENT, OR THOSE TREES IDENTIFIED AS EXEMPT FROM PROTECTION eg ENVIRONMENTAL WEEDS.
- TO RETAIN MATURE PALMS WHICH OFFER DISTINCT LANDSCAPE CHARACTER.
- TO TRANSPLANT SUITABLE MATURE PALM TREES REQUIRED TO BE REMOVED FOR THE DEVELOPMENT ELSEWHERE ON SITE SO AS TO PROVIDE AN ESTABLISHED CONTRIBUTION TO THE FUTURE LANDSCAPE AREAS OF THE AGED FACILITY.
- TO RETAIN EXISTING SCREEN SHRUBS XYLOSMA SENTICOSA IDENTIFIED BY SURVEY ON WESTERN BOUNDARY AS VALUABLE PRIVACY SCREENING ALONG NEIGHBOURING PROPERTY BOUNDARY.
- TO RETAIN EXISTING SCREEN SHRUBS CAMELLIA SASANQUA ON EASTERN (MURRAY RD.) BOUNDARY TO RETAIN ESTABLISHED PRIVACY OF RESIDENTIAL GARDENS.
- THE LANDSCAPE PLANS HAVE BEEN INFORMED BY THE DETAILED ARBORICULTURAL REPORT PREPARED BY RAIN TREE CONSULTING. TREE NUMBERS ALLOCATED IN THE ARBORICULTURAL REPORT HAVE BEEN USED ON LANDSCAPE PLANS. SEVERAL YOUNG TREES / SHRUBS CONSIDERED USEFUL FOR RETENTION AND NOT SHOWN ON SURVEY HAVE ALSO BEEN INCLUDED ON LANDSCAPE PLANS.

TREE RETENTION PLAN

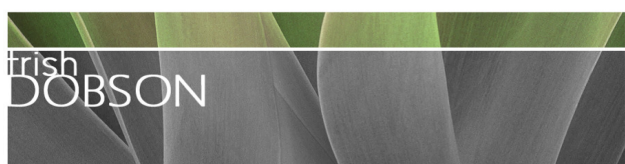
SCALE 1:200 @ A1

NOTE
PLAN TO BE READ IN CONJUNCTION WITH:
ARCHITECTURAL PLANS BY GARTNER TROVATO ARCHITECTS
ARBOICULTURAL IMPACT ASSESSMENT BY RAIN TREE CONSULTING

0m 2m 4m 6m 8m 10m

LEGEND

- PROPOSED LEVELS
- EXISTING SPOT LEVELS
- EXISTING TREES TO BE REMOVED
- EXISTING TREES TO BE RETAINED
- EXISTING PALMS TO BE TRANSPLANTED ON SITE



trish dobson landscape architecture
344 MARINE PARADE, AVALON NSW 2107
0408 983020
trish@trishdobson.com.au
TRISH DOBSON
REGISTERED LANDSCAPE ARCHITECT #458 HORTICULTURIST
A/NZ 57 241 490 158

DEVELOPMENT APPLICATION
CHELTENHAM HOUSE
Proposed Aged Care Facility
for Thompson Health Care
144-146 BEECROFT RD. BEECROFT NSW

TREE RETENTION PLAN

1:200 @ A1 SCALE
17.12.20 DATE
2010 JOB
DA ISSUE
2 of 6 SHEET
2010/ DA-L02 DWG

aged care facility

REFER TO ARCHITECTURAL PLANS BY GARNTER TROVATO
ARCHITECTURE FOR DETAILS



PLANTING PLAN
SCALE 1:150 @ A1
REFER TO SHEET L04 FOR FULL PLANTING SCHEDULE

NOTE
PLAN TO BE READ IN CONJUNCTION WITH
ARCHITECTURAL PLANS BY GARNTER TROVATO ARCHITECTS
ARBOCULTURAL IMPACT ASSESSMENT BY RAIN TREE CONSULTING

0m 2m 4m 6m 8m 10m

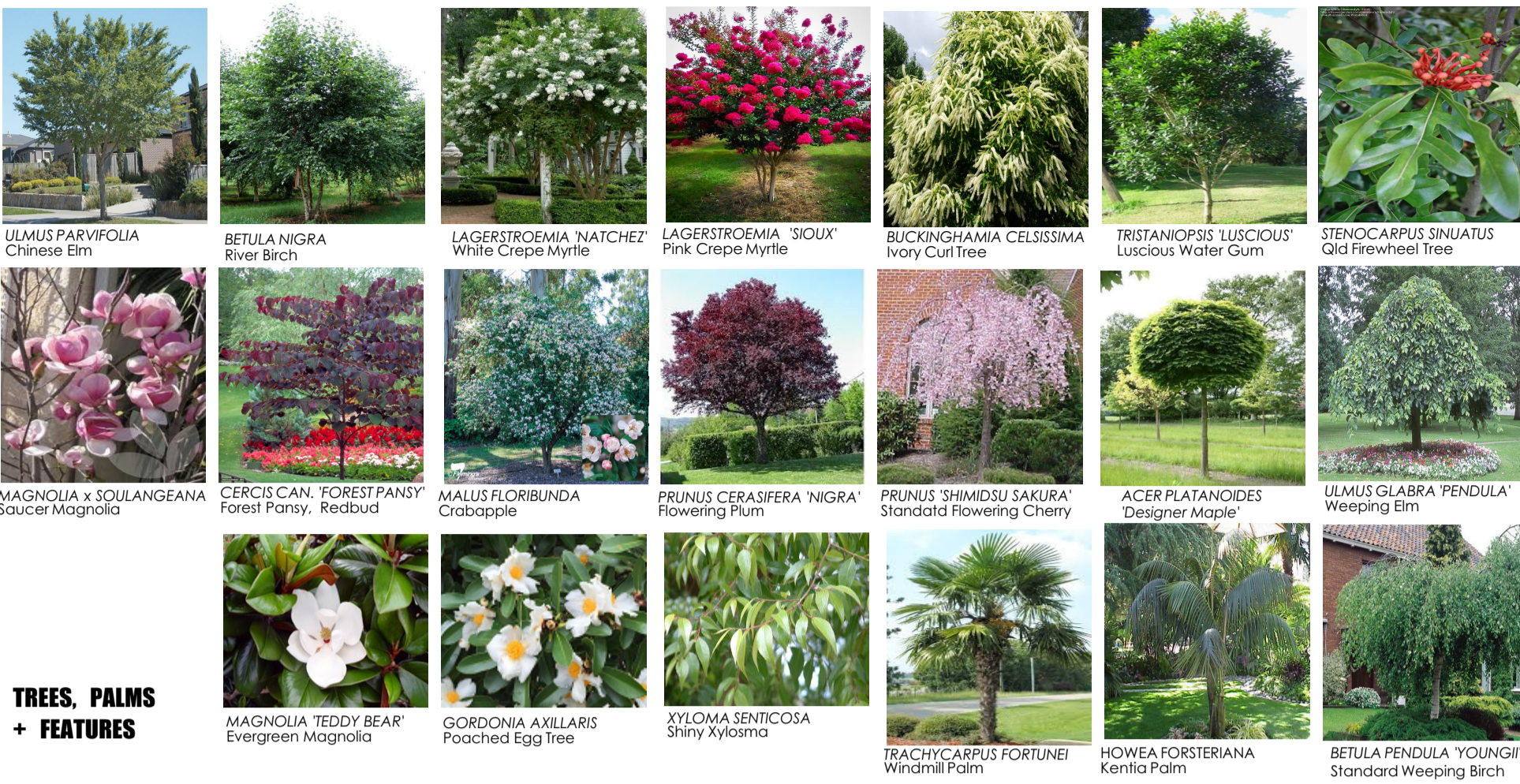
NOTE
REFER TO SHEET L04 FOR FULL PLANTING SCHEDULE

	PROJECT	Thompsons Health Care AGED CARE FACILITY 144-146 BECCROFT ROAD BECCROFT
	DRAWING	PLANTING PLAN
	SCALE	1:150 @ A1
	DATE	17.12.20
	ISSUE	DA
	SHEET	3 of 6
	JOB	2010
	DWG NO	DA-L03

PLANTING SCHEDULE

SPECIES HAVE BEEN SELECTED ON THE BASIS OF DESIGN INTENT AND SUITABILITY TO SITE CONDITIONS. SHRUBS AND FOLIAGE PLANTS HAVE BEEN SELECTED TO PROVIDE A STRIKING VARIETY OF SEASONAL COLOUR AND FLOWER. NATIVES SPECIES ARE SELECTED FOR BIRD ATTRACTING FEATURES AND NOSTALGIC / EXOTIC FLOWERING SHRUBS ARE SPECIFIED FOR GARDEN BEDS SURROUNDING THE HERITAGE BUILDING. FACHIO BECCROFT ROAD SUB-TOTAL SPECIES HAVE BEEN PROPOSED TO PROVIDE VARIATION OF FOLIAGE AND FOR SHADE TOLERANT CHARACTERISTICS PARTICULARLY IN COURTYARD PLANTERS.

KEY	BOTANICAL NAME	COMMON NAME	MATURE HT	No.	POT SIZE	LOCATION
CANOPY TREES						
BN	BETULA NIGRA	TROPICAL BIRCH	7m	5	75 litre	DRIVEWAY ENTRY
CC	BUCKINGHAMIA CELSISIMA	IVORY CURL TREE	6m	2	75 litre	ROAD SETBACK
BC	CERCIS CANADENSIS 'FOREST PANSY'	FOREST PANSY	5m	1	75 litre	CAFE COURT
Ga	GORDONIA AXILLARIS	POACHED EGG TREE	5m	2	75 litre	HERITAGE GARDEN
Lg	LAGERSTROEMIA INDICA 'FAUBIE' 'SIOUX'	PINK CREPE MYRTLE	6m	5	100 litre	DRIVEWAY ENTRY
LI	LAGERSTROEMIA INDICA 'NATCHEZ'	WHITE CREPE MYRTLE	5m	1	100 litre	HERITAGE GARDEN
MJ	MALUS FLORIBUNDA	CRABAPPLE	5m	2	75 litre	HERITAGE GARDEN
MxS	MAGNOLIA x SOULANGEANA	SAUCEUR MAGNOLIA	5m	1	75 litre	HERITAGE GARDEN
MTB	MAGNOLIA 'TEDDY BEAR'	BULL BAY MAGNOLIA	6m	1	75 litre	HERITAGE GARDEN
PCN	PRUNUS CERASIFERA 'NIGRA'	FLOWERING PLUM	4m	2	75 litre	BEECROFT RD SETBACK
SS	STENOCARPUS SINUATUS	QUEENSLAND FIREWHEEL TREE	6m	3	75 litre	FERN GARDEN
TL	TRISTANOPSIS LAURINA 'LUSCIOUS'	LUSCIOUS WATER GUM	5m	6	75 litre	ROOFTOP + CAFE
XS	XYLOSMA SENTICOSA	SHINY XYLOSMA	5m	4	75 litre	WESTERN BOUNDARY
UP	ULMUS PARVIFOLIA	CHINESE ELM	12m	1	100 litre	DRIVEWAY ENTRY
PALMS + FEATURES						
ApI	ACER PLATANOIDES 'GLOBOSUM'	DESIGNER MAPLE	2.5m	4	75 litre	SUNKEN COURT
BY	BETULA PENDULA 'YOUNGII'	WEeping BIRCH	2.5m	1	75 litre	HERITAGE GARDEN
BS	BUXUS MICROPHYLLA 'JAPONICA' 'SPIRALS'	JAPANESE BOX SPIRAL TOPARY	1.4m	4	300mm	HERITAGE GARDEN
BB	BUXUS MICROPHYLLA 'JAPONICA' 'BALLS'	JAPANESE BOX BALL TOPARY	0.6m	65	Mixed Sizes	HERITAGE GARDEN
	GREVILLEA 'COOROOORA CASCADE 'STD'	WHITE CREPE MYRTLE	5m	1	400mm	BIRD GARDEN
	HOWEA FORSTERIANA	KENTIA PALM	6m	2	100 litre	CAFE COURT
	LIVISTONIA AUSTRALIS	CABBAGE TREE PALM	7m	2	Transplanted	T21 + T22 Transplanted
	PHOENIX CANARIENSIS	CANARY ISLAND PALM	7m	1	Transplanted	T24 Transplanted
PSS	PRUNUS 'SHIMIDSU SAKURA'	WEeping CHERRY	2m	1	100 litre	HERITAGE GARDEN
	RHAPIS EXCELSA	LADY PALMS	2m	12	400mm	DRIVEWAY ENTRY
	TRACHYCARPUS FORTUNEI	WINDMILL PALM	3m	2	75 litre	HERITAGE GARDEN
UG	ULMUS GLABRA 'PENDULA'	WEeping ELM	3m	1	75 litre	CAFE COURT
SHRUBS						
AAM	AZALEA INDICA 'ALBA MAGNIFICA'	WHITE AZALEA	1.2m	32	200mm	HERITAGE GARDEN
AS	AZALEA INDICA 'SPLENDENS'	SALMON AZALEA	1.2m	20	200mm	BEECROFT RD SETBACK
AAA	AZALEA INDICA 'ALPHONSE ANDERSON'	PINK AZALEA	1.2m	28	200mm	HERITAGE GARDEN
AxH	ABUTILON x HYBRIDUM	CHINESE LANTERNS	2.5m	6	300mm	HERITAGE GARDEN
Br	BRUNSFELIA LATIFOLIA	YESTERDAY TODAY TOMORROW	1m	24	200mm	HERITAGE GARDEN
BO	BUDDLEIA DAVIDII	BUTTERFLY BUSH	2m	2	200mm	HERITAGE GARDEN
B	BUXUS MICROPHYLLA 'JAPONICA'	JAPANESE BOX	0.5m	462	150mm	HERITAGE GARDEN
Cs	CAMELLIA SASANQUA HEDGE	CAMELLIA TO MATHC EXTG	3m	13	300mm	MURRAY RD SETBACK
CS	CAMELLIA SASANQUA 'MINE-NO-YUKI'	WHITE CAMELLIA	3m	5	300mm	SUNKEN COURT
CLJ	CAMELLIA LITTLE JOHN	DWARF BOTTLEBRUSH	1m	3	200mm	BIRD GARDEN
CH	CALLISTEMON VIM 'MACARTHUR'	RED BOTTLEBRUSH	1.5m	2	200mm	BIRD GARDEN
CPC	CALLISTEMON CIT 'PINK CHAMPAGNE'	PINK BOTTLEBRUSH	1.5m	1	200mm	BIRD GARDEN
C	CARISSA MACROCARPA 'EMERALD STAR'	NATAL PLUM	0.6m	18	200mm	ROOFTOP GARDEN
D	DAPHNE ODORA	DAPHNE	0.7m	6	200mm	HERITAGE GARDEN
DS	DURANTA 'SHEENA'S GOLD'	SHEENNA'S GOLD	1m	11	200mm	HERITAGE GARDEN
EI	ECHILUM FASTUOSUM	PRIDE OF MADIRA	1.2m	2	200mm	BIRD GARDEN
ES	ESCALLONIA 'PINK PIXIE'	PINK ESCALLONIA	0.5m	18	200mm	BIRD GARDEN
Gf	GARDENIA AUGUSTA 'FLORIDA'	GARDENIA	0.8m	21	200mm	HERITAGE GARDEN
GM	GREVILLEA 'MOONLIGHT'	CREAM SPIDER FLOWER	2.5m	4	200mm	BIRD GARDEN
	GREVILLEA 'CRIMSON VILLES'	CRIMSON VILLES	1m	9	200mm	BIRD GARDEN
HP	HEUCHRYSUM PETIOLARE	LICORICE PLANT	0.7m	23	200mm	HERITAGE GARDEN
HT	HIBISCUS TILIACEUS 'RUBRUM'	BURGUNDY COTTONWOOD	3m	3	300mm	FERN GARDEN
Hm	HYDRANGEA MACROPHYLLA	BLUE HYDRANGEA	1m	24	200mm	HERITAGE GARDEN
HT	HYDRANGEA 'TOKYO DELIGHT'	LACECAP HYDRANGEA	1m	14	200mm	SUNKEN COURT
Hq	HYDRANGEA QUERCIFOLIA	OAK LEAF HYDRANGEA	1m	13	200mm	HERITAGE GARDEN
JS	JUNIPERUS VIRGINIANA 'SPARTAN'	GREEN SPARTAN JUNIPER	4m	3	300mm	HERITAGE GARDEN
Lor	LOROPETALUM CHINENSIS 'CHINA PINK'	PINK PRINCE FLOWER	1m	19	200mm	HERITAGE GARDEN
MLG	MAGNOLIA LITTLE GEM	LITTLE GEM	2.5m	4	400mm	HERITAGE GARDEN
MI	MICELIA RIGO	PINK WINE MAGNOLIA	2m	16	300mm	HERITAGE GARDEN
MP	MURRAYA PANICULATA	ORANGE JESSAMINE	2.5m	36	200mm	HERITAGE GARDEN
N	NANDINA 'GULF STREAM'	DWARF SACRED BAMBOO	0.7m	18	200mm	BEECROFT RD SETBACK
Mp	PHILADELPHUS x VIRGINIALIS	MOCK ORANGE	2.5m	6	300mm	HERITAGE GARDEN
Plec	PLECTRANTHUS ARGENTATUS	SILVER PLECTRANTHUS	1m	6	200mm	HERITAGE GARDEN
PML	PLECTRANTHUS 'MONA LAVANDER'	LAVANDER WOODSPLUR	1m	19	200mm	HERITAGE GARDEN
PR	PRUNUS 'FRASER' 'ROBUSTA'	RED PHOTINIA	3m	25	300mm	HERITAGE GARDEN
P	PITTIOSPORUM 'GOLF BALL'	DWARF PITTIOSPORUM	0.6m	16	200mm	HERITAGE GARDEN
R	RAPHIOLEPS 'SNOW MAIDEN'	DWARF HAWTHORN	0.8m	10	200mm	HERITAGE GARDEN
RxI	RAPHIOLEPS x INTERMEDIA	INDIAN HAWTHORN	1.2m	44	200mm	HERITAGE GARDEN
RO	RAPHIOLEPS 'ORIENTAL PEARL'	DWARF HAWTHORN	0.5m	13	200mm	HERITAGE GARDEN
Rs	RADERMACHERA SINICA 'SUMMERSCENT'	ASIAN BELL FLOWER	2m	25	300mm	HERITAGE GARDEN
Ros	ROSMARINUS 'TUSCAN BLUE'	ROSEMARY	1m	5	200mm	HERITAGE GARDEN
SL	SALVIA LEUCANTHA	MEXICAN SAGE	1m	6	200mm	HERITAGE GARDEN
Slx	SALVIA 'INDIGO SPIRES'	BLUE SAGE	1m	10	200mm	HERITAGE GARDEN
T	TEUCRIUM FRUTICANS	MINT GERMANDER	1m	11	200mm	HERITAGE GARDEN
GRASSES, ACCENTS + LILIES						
	ACANTHUS MOLLIS	OYSTER PEA	0.7m	94	200mm	HERITAGE GARDEN
	AGAVE ATTENUATA	CENTURY PLANT	0.6m	6	200mm	HERITAGE GARDEN
Ag	AGAVE OVATIFOLIA	WHALE TONGUE AGAVE	0.8m	10	300mm	DRIVEWAY ENTRY
	ALPHINIA CAERULEA	NATIVE GINGER	1.2m	15	200mm	FERN GARDEN
	ALPHINIA ZERUMBET 'VARIEGATA'	VARIATED GINGER	1.4m	13	200mm	CAFE COURT
	ANIGOZANTHOS 'LANDSCAPE TANGERINE'	TANGIERINE KANGAROO PAWS	0.6m	10	150mm	BIRD GARDEN
	ARTHROPOGON CIRRIATUM	NEW ZEALAND ROCK LILY	0.7m	44	150mm	HERITAGE GARDEN
	ASPLENIUM NIDUS	BIRD NEST FERN	0.7m	16	200mm	FERN GARDEN
	BLECHNIUM 'SILVER LADY'	SILVER LADY WATER FERN	0.5m	30	200mm	DRIVEWAY ENTRY
	CORDYLINAE AUSTRALIS	PALM LILY	2m	27	300mm	HERITAGE GARDEN
	KARR LILY	KARR LILY	0.6m	100 + Extras	150mm	HERITAGE GARDEN
	CRINUM PENDUNCULATUM	SWAMP LILY	1m	12	200mm	FERN GARDEN
	CYCAS REVOLUTA	SAGO PALM	1m	11	300mm	HERITAGE GARDEN
	CYCAS REVOLUTA	SAGO PALM	1m	8	300mm	IN POTS AT ENTRANCE
	DORANTHUS EXCELSA	GYMEL LILY	1.2m	9	200mm	FERN GARDEN
	DICKSONIA ANTARCTICA	TREE FERN	2m	26	300mm	FERN GARDEN
	ORACASIA 'JANET CRAIG'	JANET CRAIG	1.4m	15	200mm	CAFE COURT
	HAKONECHLOA MACRA	JAPANESE FOREST GRASS	0.5m	15	150mm	SUNKEN COURT
	HYMENOCALLIS LITTORALIS	SPIDER LILY	0.6m	38	150mm	CAFE COURT
	IRIS GERMANICA	BEARDED IRIS	0.5m	10	150mm	HERITAGE GARDEN
	LIGULARIA RENIFORMIS 'DESIGNER VERDE'	TRACTOR SEAT PLANT	0.5m	60	150mm	DRIVEWAY ENTRY
	LOMANDRA 'LIME TUFF'	DWARF MAT RUSH	0.5m	16	150mm	HERITAGE GARDEN
	LIRIOPE EVERGREEN GIANT	GIANT TURF LILY	0.6m	50	150mm	HERITAGE GARDEN
	OPHIOPOGON JAPONICUS	MONDO GRASS	0.25m	16	150mm	SUNKEN COURT
	PHILODENDRON 'XANADU'	DWARF PHILODENDRON	0.7m	16	200mm	CAFE COURT
	PHILODENDRON 'LITTLE PHIL'	DWARF PHILODENDRON	0.4m	41	150mm	CAFE COURT
	PHORMIUM TENAX	NEW ZEALAND FLAX	1.2m	16	200mm	HERITAGE GARDEN
CLIMBERS, GROUNDCOVERS + PERENNIALS						
	AGAPANTHUS PRAEOCX	LILY OF THE NILE	0.5m	72	150mm	MURRAY RD SETBACK
	AGAPANTHUS PRAEOCX	LILY OF THE NILE	0.5m	84	150mm	SITE
	AGAPANTHUS PRAEOCX WHITE	WHITE LILY OF THE NILE	0.5m	120	150mm	DRIVEWAY ENTRY
	AGAPANTHUS SNOWBELLS	DWARF WHITE AGAPANTHUS	0.3m	46	150mm	HERITAGE GARDEN
	ANEMONE HUPEHENSIS	JAPANESE WIND FLOWERS	0.5m	10	150mm	HERITAGE GARDEN
	BERGENIA CORDIFOLIA	BERGENIA	0.5m	12	150mm	HERITAGE GARDEN
	CAMELLIA 'SNOW'	WHITE PROSTRATE CAMELLIA	0.3m	10	200mm	SUNKEN COURT
	CAMELLIA 'MARGE MILLER'	PINK PROSTRATE CAMELLIA	0.3m	7	200mm	WESTERN BOUNDARY
	CERASTIUM TOMENTOSUM	SNOW IN SUMMER	g/cover	16	150mm	HERITAGE GARDEN
	CONVOLVULUS MAURITANICUS	MOROCCAN GLORY FLOWER	g/cover	16	150mm	DRIVEWAY ENTRY
	CASUARINA 'COUSIN IT'	PROSTRATE CASUARINA	0.3m	24	150mm	ROOFTOP GARDEN
	DICHONDRA REPENS	KIDNEY WEED	g/cover	100	150mm	DRIVEWAY ENTRY
	HEERIA ELEGANS	SPANISH SHAWL	g/cover	12	150mm	CAFE COURT
	JASMINUM SAMBAC	ARABIAN JASMINE	climber	2	200mm	HERITAGE GARDEN
	JUNIPERUS CONFERTA	SHORE JUNIPER	0.3m	22	200mm	DRIVEWAY ENTRY
	LIMONUM PEREZII	SEA LAVANDER	0.3m	38	150mm	HERITAGE GARDEN
	MYOPORUM PARVIFOLIUM 'YAREENA'	CREeping BOOBALA	0.2m	30	150mm	ROOFTOP GARDEN
	ROSA 'PIERRE DE RONSARD'	PINK CLIMBING ROSE	climber	2	200mm	HERITAGE ARBOUR
	STACHYS LANATA	LAMB'S EARS	0.3m	38	150mm	HERITAGE GARDEN
	SYNGONIUM PODOPHYLLUM	SYNGOLIUM	climber	16	150mm	COURTS
	STEPHANOTIS FLORIBUNDA	BRIDAL CREEPER	climber	2	200mm	COURTYARD ARBOUR
	TRACHELOPERMUM JASMINOIDES	STAR JASMINE	0.3m	40	150mm	WESTERN BDT FENCE
	TRACHELOPERMUM ASIATICUM 'FLAT MAT'	COMPACT ASIAN JASMINE	0.3m	188	150mm	MIXED
	VIOLA	VIOLA	g/cover	40	150mm	SUNKEN COURT
	VIOLA ODORATA	VIOLA	g/cover	40	150mm	SUNKEN COURT
	ZEPHYRANTHUS CANDIDA	AUTUMN CROCUS	0.3m	14	150mm	HERITAGE GARDEN



TREES, PALMS + FEATURES



SHRUBS



ACCENTS, FOLIAGE PLANTS + LILIES



GROUNDCOVERS + CLIMBERS

PROPOSED SPECIES IMAGES

GENERAL SPECIFICATIONS

LANDSCAPE HARDWORKS

DEMOLITION, BULK EARTHWORKS, MASONRY RETAINING WALLS, BRICK WALLS, GARDEN EDGING, PLANTER BOXES, PAVING, STEPS, IN SITU CONCRETE, DRAINAGE, WATERPROOFING, FENCING, EXTERNAL LIGHTING, TREE REMOVAL AND ALL SITE CONSTRUCTION INDICATED SHALL BE EXECUTED IN ACCORDANCE WITH ARCHITECTURAL + ENGINEERING SPECIFICATIONS BY BUILDER.

LANDSCAPE WORKS SHALL GENERALLY BE UNDERTAKEN IN ACCORDANCE WITH COUNCIL APPROVED PLANS AND SHALL BE COMPLIANT WITH:
AS4970-2009 Protection of trees on development sites
AS4377-2007 Pruning of amenity trees
AS4419-2003 Soils for landscaping and garden use
AS4454-2012 Composts, soil conditioners and mulches
AS3743-2003 Planting mixes
AS2030-2018 Tree work for landscape use
AS1428-1/2009 Design for access and mobility, General requirements for access
AS1428-2/1992 Design for Access and Mobility, Enhanced and Additional Requirements
ALL LANDSCAPE HARD WORKS SHALL BE EXECUTED BY A COMPETENT LANDSCAPE CONTRACTOR EXPERIENCED IN LANDSCAPE CONSTRUCTION. THE CONTRACTOR SHALL HOLD A CURRENT NSW STRUCTURAL LANDSCAPE LICENCE
LANDSCAPE SOFT WORKS SHALL BE EXECUTED BY A COMPETENT CONTRACTOR WITH EXPERIENCE IN HORTICULTURAL PRACTICE
IRRIGATION WORKS SHALL BE EXECUTED BY A CONTRACTOR SUITABLY QUALIFIED AND LICENCED BY NSW DEPARTMENT OF FAIR TRADING FOR URBAN IRRIGATION.

TREE PROTECTION

TREE PROTECTION SHALL BE INSTALLED PRIOR TO COMMENCEMENT OF WORKS AROUND EXISTING TREES TO BE RETAINED IN ACCORDANCE WITH ARBORICULTURAL IMPACT ASSESSMENT. REPORT BY RAINTREE CONSULTING, CONSENT CONDITIONS AND STANDARD INDUSTRY PRACTICES. IN GENERAL, TREE PROTECTION SHALL CONSIST OF 1800mm HIGH CHAIN WIRE FENCING SUPPORTED BY STEEL POSTS. TRUNK PROTECTION SHALL BE APPLIED WHERE APPLICABLE.
CARE SHALL BE TAKEN WHEN REMOVING COUNCIL APPROVED TREES AND PLANTING WITHIN TP2's SO AS NOT TO DAMAGE ROOTS OR CANOPIES OF TREES TO BE RETAINED.
CARE SHALL BE TAKEN DURING ENTIRE PERIOD OF WORKS TO ENSURE NO DAMAGE TO ROOTS OR CANOPIES OF TREES TO BE RETAINED. NO STORING OF BUILDING MATERIALS OR VEHICLES, WASHING OF EQUIPMENT, DISPOSAL OF CHEMICALS, ETC. SHALL BE PERMITTED WITHIN TP2's. NO EXCAVATION OR TRENCHING SHOULD OCCUR BENEATH CANOPIES EXCEPT FOR COUNCIL APPROVED WORKS. ALL EXCAVATION BENEATH TREE CANOPIES SHALL BE UNDERTAKEN BY HAND OR TO COUNCIL / PROJECT ARBORIST INSTRUCTIONS.
SHOULDER MACHINERY BE REQUIRED TO PASS WITHIN TREE PROTECTION ZONES.
APPROPRIATE TREE PROTECTION MEASURES SHALL BE APPLIED TO ROOT AND CANOPY AREA.

SOIL PREPARATION + PLANTING SOILS

PLANTING BEDS SHALL BE PREPARED GENERALLY IN ACCORDANCE WITH DETAILS
THE FOLLOWING SPECIFICATIONS APPLY GENERALLY TO DISTURBED AREAS OF THE SITE WHERE EXCAVATION FOR CONSTRUCTION REQUIRES REINSTATEMENT OF LEVELS USING IMPORTED SOILS:
STANDARD TOPSOIL:
SANDY LOAM TO CLAY LOAM MIX DESIGNED FOR GENERAL PURPOSE ON-GRADE GARDEN BED PLANTING. WITH A HIGH NUTRIENT REQUIREMENT FOR SUSTAINED OPTIMUM GROWTH.
USE 'LOW P' OPTIONS FOR NORTHERN NATIVE PLANT GARDEN.

STANDARD SUBSOIL:
LOAM TO SANDY LOAM, WELL DRAINED MEDIUM WITH LOW ORGANIC MATTER FOR BACKFILLING AT DEPTH. WELL BALANCED CHEMICALLY, NOT SALINE OR SODIC OR EXCESSIVELY ACIDIC OR CALCIUM DEFICIENT AND NOT DISPERSIVE. USE LOW 'P' OPTION WHERE APPLICABLE FOR NATIVES.
ON-SLAB TOPSOIL INCLUDING PLANTER BOXES:
OPEN GRANULAR WELL-DRAINED GROWING MEDIA WITH SATURATED DENSITY OF LESS THAN 2400 KG/M³ FOR USE IN THE TOP 400mm OF ALL ON-SLAB INSTALLATIONS. GENERALLY, SOIL SHALL BE FREE OF UNWANTED MATERIAL, WITH PHYSICAL PROPERTIES OF POTTING MIX AS PER AS 3743.
ON-SLAB SUBSOIL INCLUDING PLANTER BOXES:
OPEN GRANULAR WELL-DRAINED GROWING MEDIA WITH ALL-UP SATURATED DENSITY OF LESS THAN 2000 KG/M³ FOR USE AT DEPTH IN ALL ON-SLAB INSTALLATIONS.
GENERALLY THE SOIL MUST BE FREE OF UNWANTED MATERIAL AND MUST COMPLY WITH AS 3743.

IMPROVED SITE SOILS

FOR PLANTING BEDS WHERE EXISTING SITE SOIL HAS BEEN RETAINED AT OR NEAR FINISHED LEVELS IMPROVED SITE SOIL SHALL BE USED FOR PLANTING. SITE SOIL TO A DEPTH OF 300mm SHALL BE AMENDED USING 10% GREENFIRE MULCH CULTIVATED INTO SITE SOIL.

GENERAL NOTES:

DO NOT INTRODUCE ORGANIC MATTER LOWER THAN 300mm. BACKFILL AT DEPTH WITH SUBSOIL ONLY.
CONTRACTOR SHALL UNDERTAKE pH TESTS AND ADJUST WHERE NECESSARY TO ACHIEVE A pH WITHIN THE 5.5 - 7.5 RANGE. MIX IN GYPSUM AT MANUFACTURER'S RECOMMENDED RATES IF CLAY SOIL ENCOUNTERED.

GARDEN EDGING

NORTHERN LAWN
EDGE JUNCTIONS OF ALL LAWN AND GARDEN AREAS WITH 50mm STEEL EDGE FINISHED LEVEL WITH ADJOINING LAWN.

EASTERN CAFE COURTYARD CONCRETE EDGE
EDGE SANDSTONE PAVING WITH CURVED EDGE 150mm HIGH IN-SITU CONCRETE TINTED WITH LIGHT GREY-BROWN PIGMENT TO MATCH SELECTED SANDSTONE PAVING COLOUR. (See Detail)

WESTERN SUNKEN COURTYARD
EDGE SANDSTONE PAVING WITH 110mm WIDE BRICK EDGE IN STRETCHER PATTERN. BRICKS TO MATCH EXISTING BRICK GARDEN EDGES ON SITE. FINISH APPROXIMATELY 150mm HIGH WITH OPTIONAL BULLNOSSED HALF BRICK CAPPING. (See Detail)

DRIVEWAY GARDENS

CONSTRUCT LOW 200mm BRICK WALLS TO HEIGHTS AS INDICATED ON PLAN. USE BRICK TO MATCH EXISTING FINISHED WITH 110 HIGH BRICK HEADER.

MURRAY RD + BEECROFT RD

EDGE CONCRETE PEDESTRIAN PATHS WITH LOW BRICK WALL (APPROX. 200mm HIGH) TO MATCH EXISTING WALL ON BEECROFT RD.

MASONRY RETAINING WALLS

RETAINING WALL TO SOUTH OF HERITAGE HOUSE SHALL BE CONSTRUCTED IN CONCRETE BLOCK WITH RENDERED + PAINTED FINISH IN MID GREY-BROWN COLOUR TO COMPLEMENT HERITAGE HOUSE TRIMS. MAKE WALL SAFE FROM FALLS WITH SECURE FENCING.

PAVING

NORTHERN GARDEN ADJOINING HERITAGE ITEM
PAVING GENERALLY SHALL BE 150mm WIDE CONCRETE PATH TINTED WITH UV RESISTANT LIGHT GREY-BROWN PIGMENT TO MATCH ARCHITECTURAL COLOURS
PAVING SHALL BE INSTALLED TO COMPLY WITH:
AS1428-1/2009 Design for access and mobility, General requirements for access
AS1428-2/1992 Design for Access and Mobility, Enhanced and Additional Requirements
PATH SHALL BE FINISHED FLUSH WITH ADJOINING LAWNS WITH NO EDGING TO AVOID RISK HAZARDS FOR ELDERLY RESIDENTS.

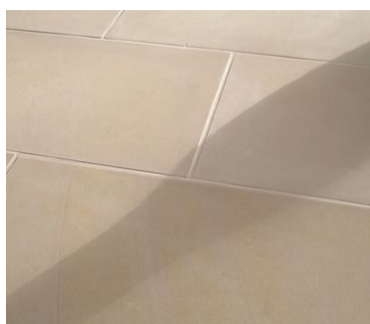
EASTERN CAFE COURTYARD

PAVING SHALL BE POROUS PAVING, SUCH AS STONESET, TO COMPLY WITH ARBORIST RECOMMENDATIONS.

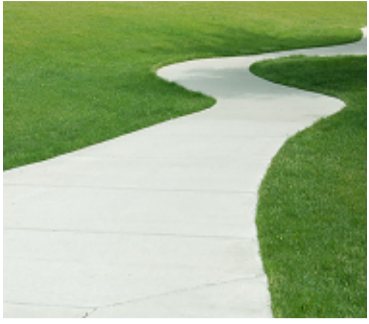
WESTERN SUNKEN COURTYARD

PAVING SHALL BE SAWN SANDSTONE LAID ON A CONCRETE SLAB (INSTALLATION TO AUSTRALIAN STANDARDS)

LANDSCAPE MATERIALS PALETTE



courtyards + entrance path
SAWN SANDSTONE TILES
laid on concrete slab



curtilage of heritage house
CURVED INSITU CONCRETE PATHS
Tinted with light grey-brown pigment to match house trims. Lawn finished flush with lawn and with no edging to avoid trip hazards.



road reserve garden edges
LOW BRICK WALLS
with bullnosed header. Brick colour + details to match existing walls on Beecroft Rd



cafe courtyard garden edges
CURVED CONCRETE EDGING
Low edging (150mm high) tinted with light grey-brown pigment to match selected stone + architectural trims.



sunken court garden edges
LOW NARROW BRICK EDGE
110mm wide with optional bullnosed capping edging to sandstone paving (See Detail)



garden edging - heritage house
STEEL LAWN EDGING
5mm mild steel edging finished flush with lawn



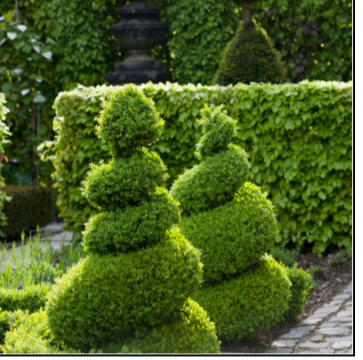
garden walls - driveway entry
LOW BRICK WALLS
Brick retaining walls finished to design levels. Material to be selected brick to match existing red brick on site, capped with 230mm header course.



wall south of heritage house
RENDERED + PAINTED BLOCK
Wall between heritage house + brick driveway wall to be rendered + painted in mid grey-brown colour to match heritage house trims.



perimeter / security fencing
METAL PALISADE
Black finish to match existing fencing. Generally fencing is to reflect existing heritage handrail.



traditional planting selection
HERITAGE GARDEN
Species selection for curtilage of heritage item shall consist of species representative of Federation period.



porous paving
T.P.Z. CAFE COURTYARD
Porous paving similar to StoneSet to be installed under canopy T54 Ulmus parvifolia in accordance with Arborist Report



rooftop garden - service area
SYNTHETIC TURF
Pre-fabricated raised planters surrounded by synthetic turf as low maintenance green surface



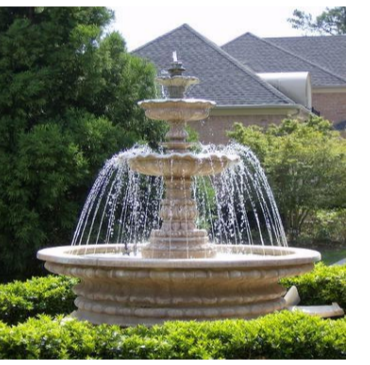
sunken garden structure
TIMBER ARBOUR
Materials + detail design to reflect existing arbour (above) proposed to be demolished for works



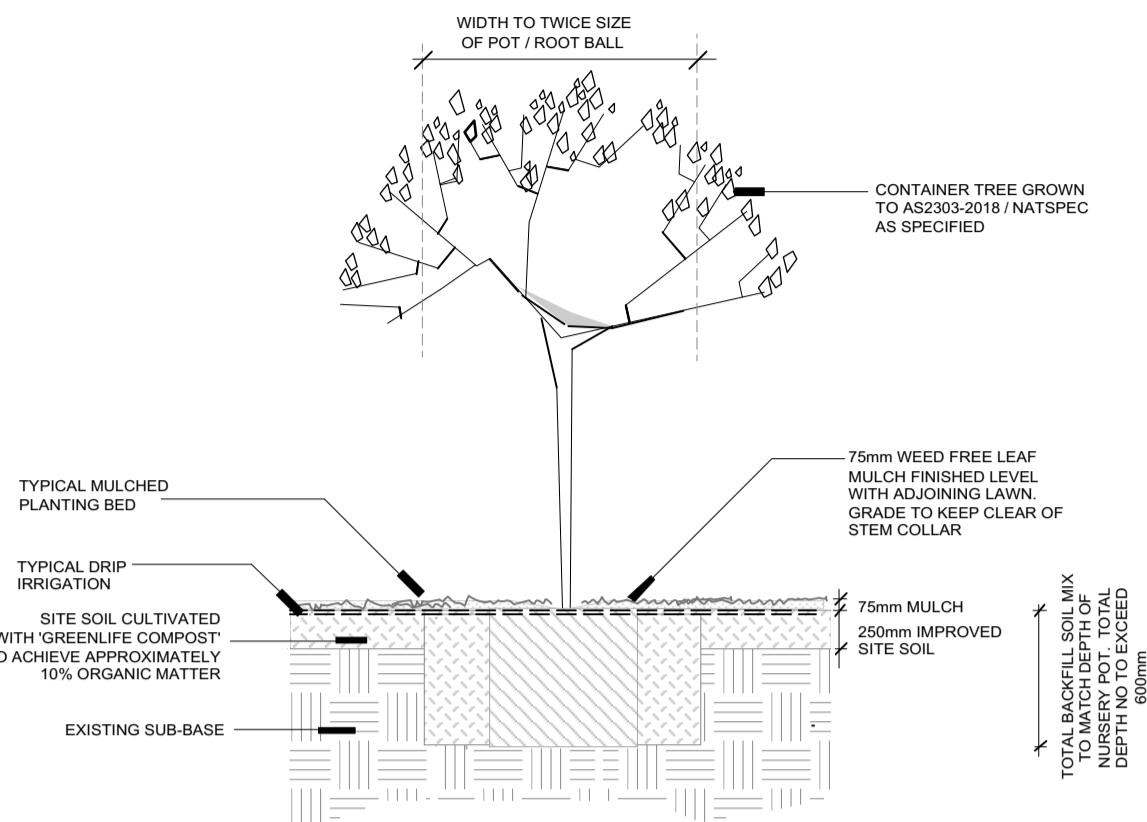
heritage garden arbour
PAINTED TIMBER
white painted arbour with cascading climbing rose framing entrance to bird garden



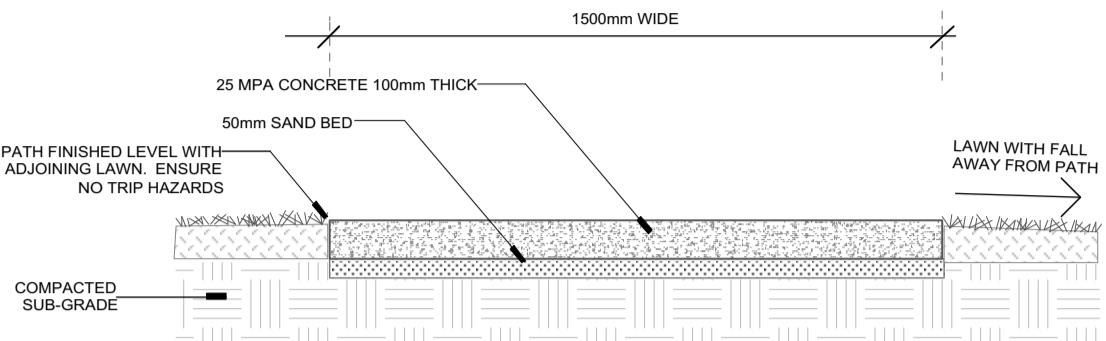
garden furniture
comfortable garden furniture with arm rests suitable for aged residents' use



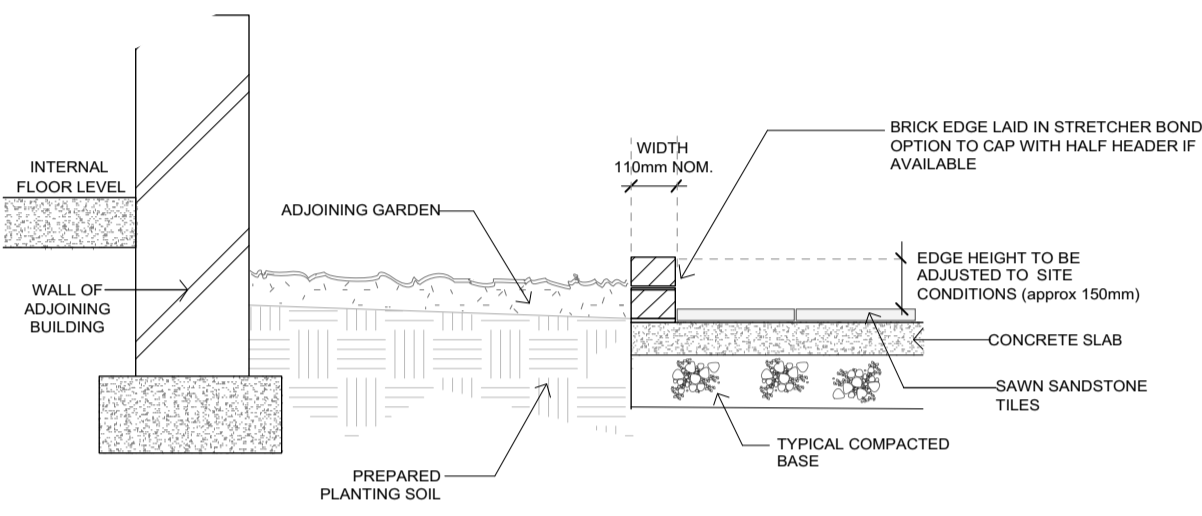
garden ornamentation
FOUNTAIN
heritage fountain surrounded by formal hedging proposed for inclusion in cafe courtyard



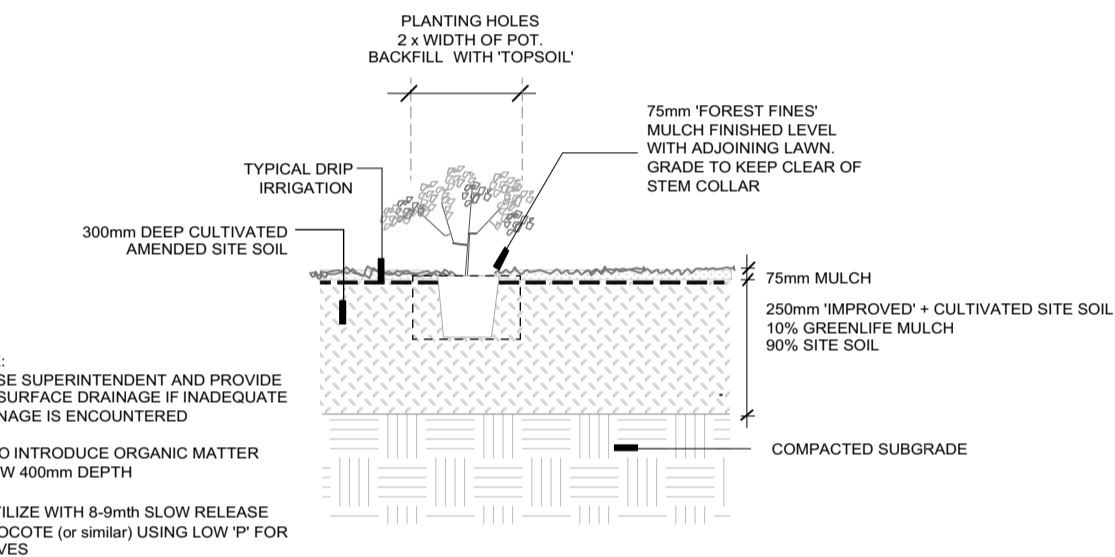
01 TYPICAL TREE PLANTING
PLANTING BED AT NATURAL GRADE
SCALE 1:25



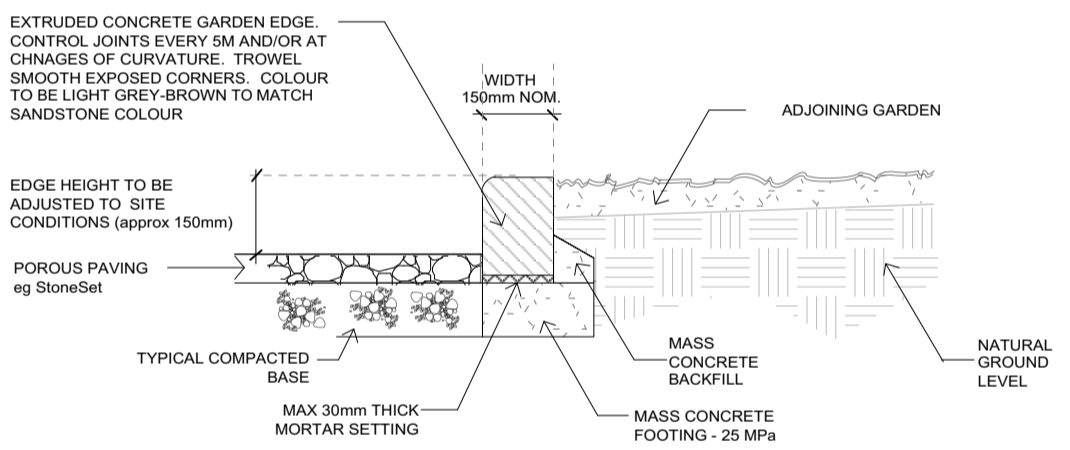
05 TYPICAL DETAIL CONCRETE PATH - HERITAGE GARDEN
SECTION
SCALE 1:25



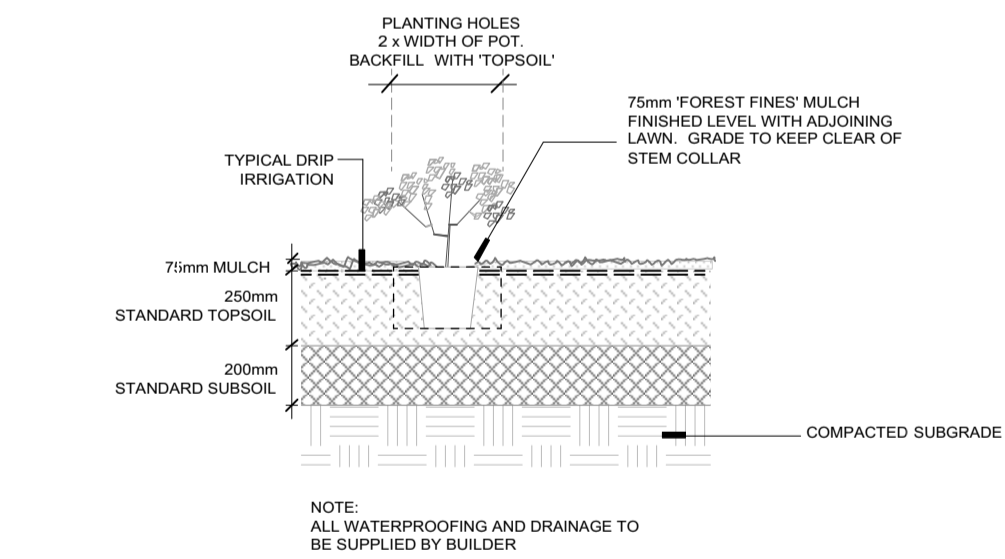
06 BRICK GARDEN EDGE - WESTERN 'SUNKEN' COURTYARD
SECTION
SCALE 1:25



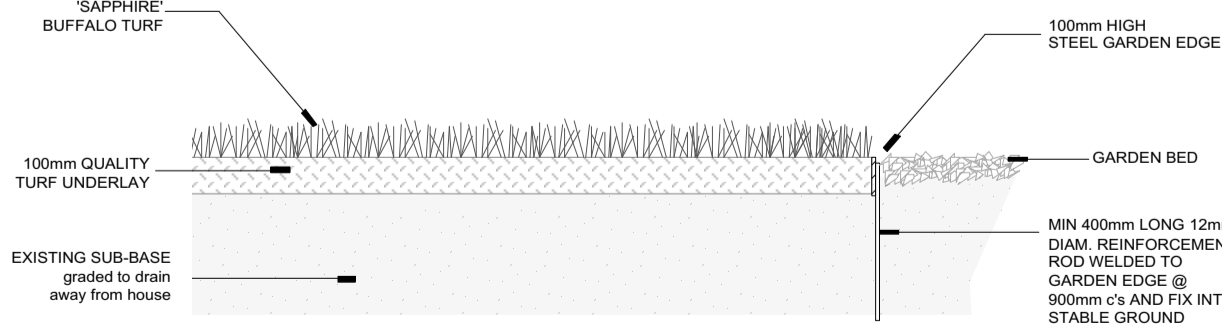
02 TYPICAL PLANTING BED PREPARATION SITE SOIL
TREE + SHRUBS PLANTING ON GRADE - IMPROVED SITE SOIL
SCALE 1:25



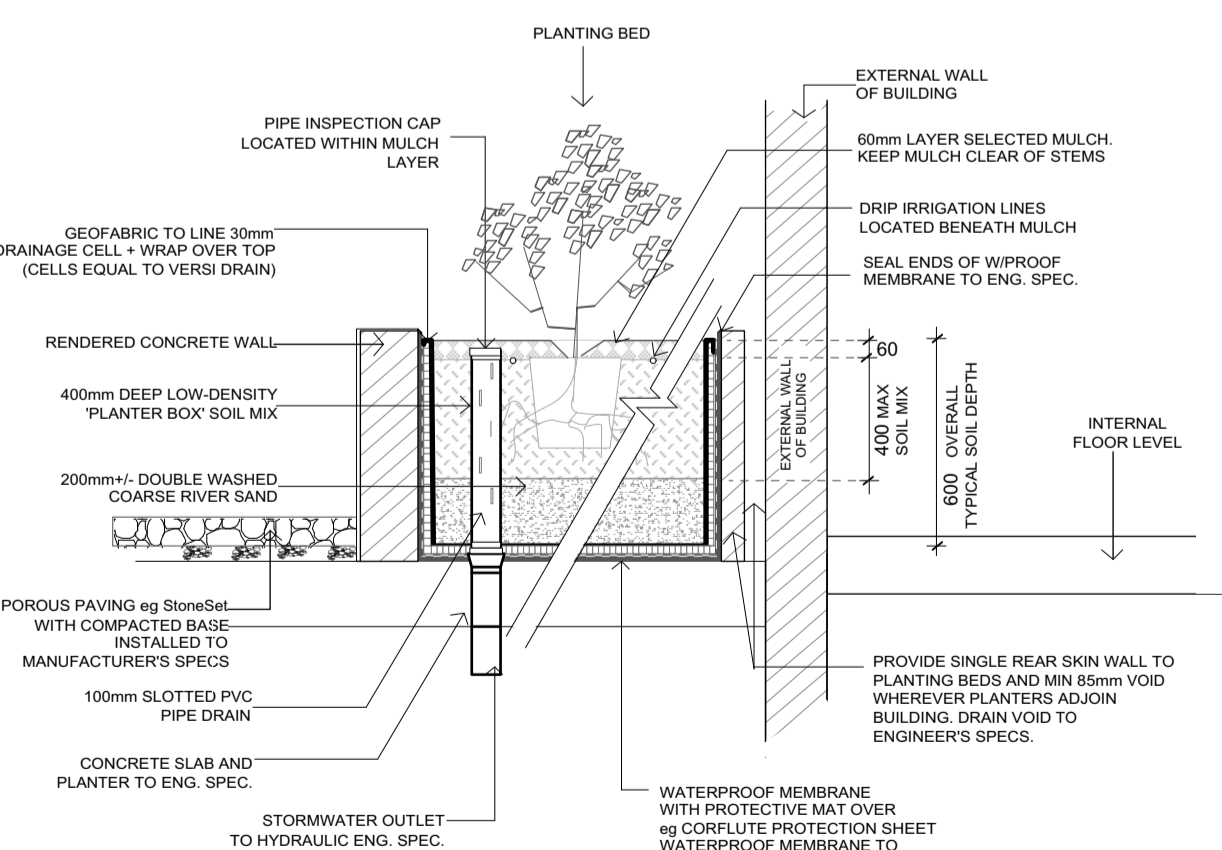
07 CONCRETE GARDEN EDGE - CAFE COURTYARD
SECTION
SCALE 1:25



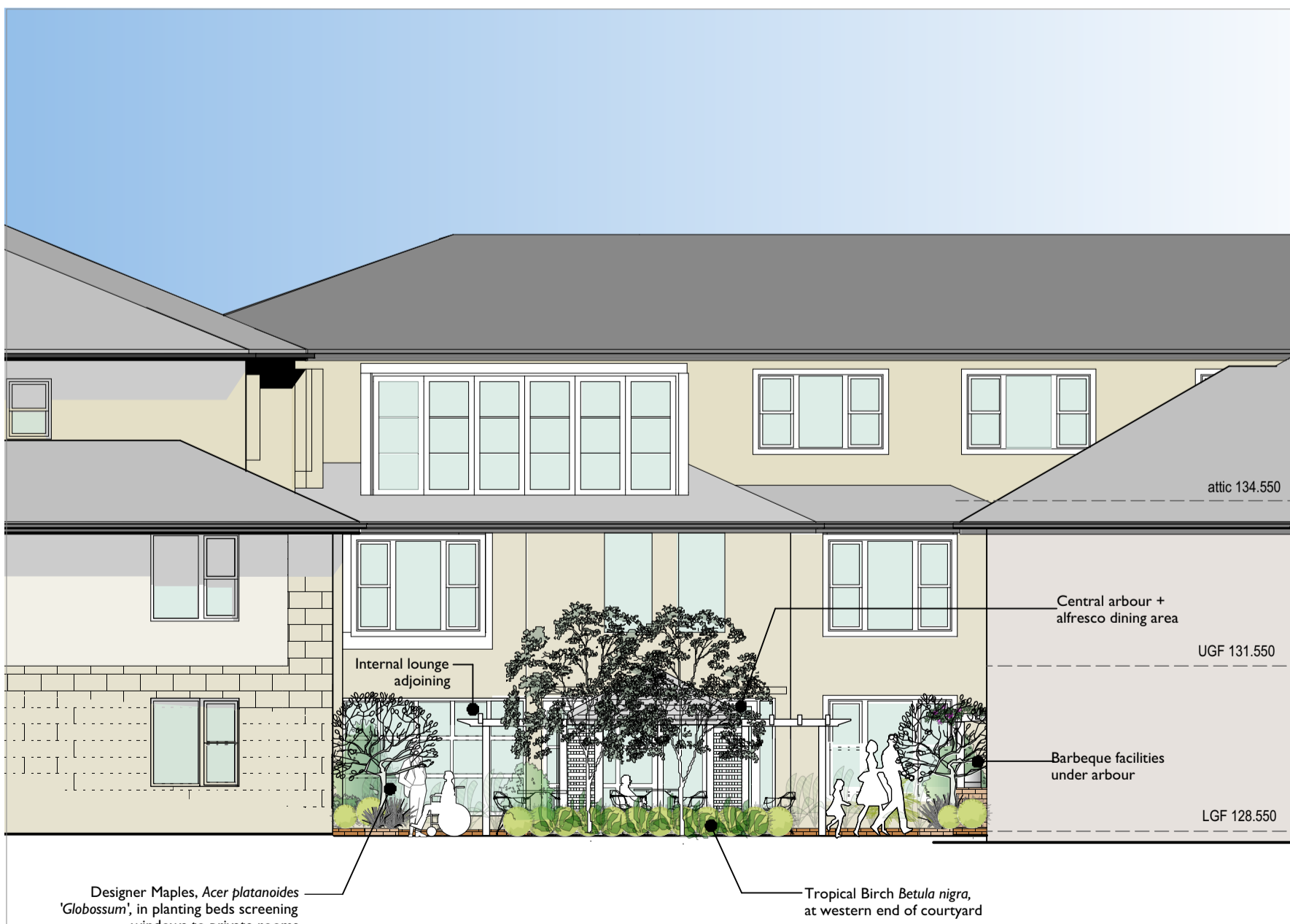
03 PLANTING BED PREPARATION IMPORTED SOIL
TYPICAL SECTION
SCALE 1:25



04 STEEL GARDEN EDGE - HERITAGE GARDEN LAWN
SCALE 1:20



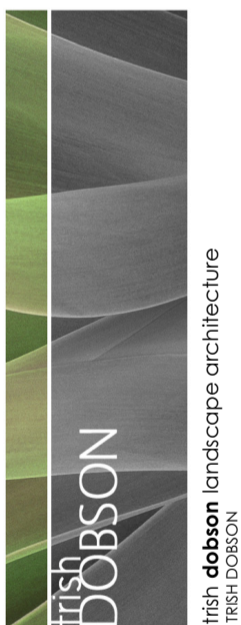
08 TYPICAL DETAIL SHRUB PLANTER ADJOINING EXTERNAL WALLS
PLANTING ON SLAB CAFE COURTYARD - 600mm TYPICAL SOIL DEPTH
SCALE 1:25



SIDE ELEVATION - WESTERN 'SUNKEN' COURTYARD
SCALE 1:100 @ A1

TYPICAL DETAILS

AMENDMENTS



trish dobson landscape architecture
34A MARINE PARADE AVALON NSW 2107
0408 983200
trish@trishdobson.com.au

© TRISH DOBSON LANDSCAPE ARCHITECTURE
BLUESKY TO CLASH ALL DIMENSIONS PRIOR TO CONSTRUCTION
WHERE ANY DISCREPANCY EXISTS BETWEEN FIGURED AND SCALED DIMENSIONS, THE FIGURED DIMENSIONS SHALL PREVAIL.

CLIENT
Thompson Health Care

PROJECT
AGED CARE FACILITY
CHELTENHAM HOUSE
144-148 BEECROFT RD
BEECROFT

DRAWING

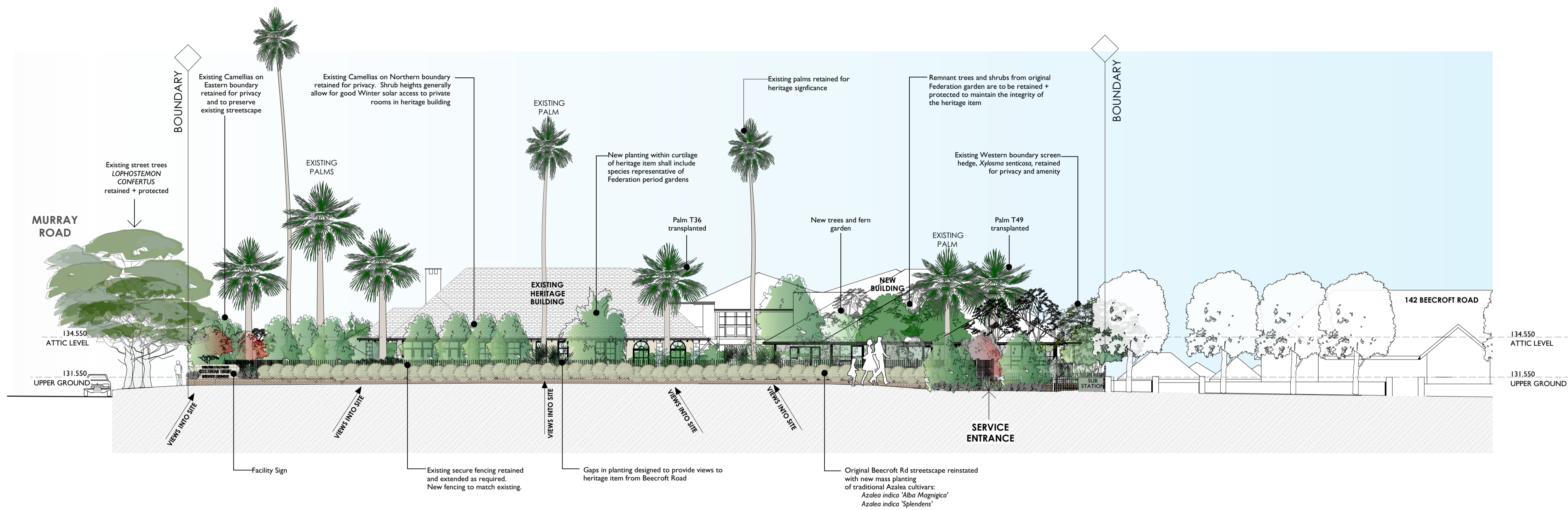
DETAILS

SCALE
DATE
ISSUE
SHEET

As Shown
17.12.20
01
5 of 6

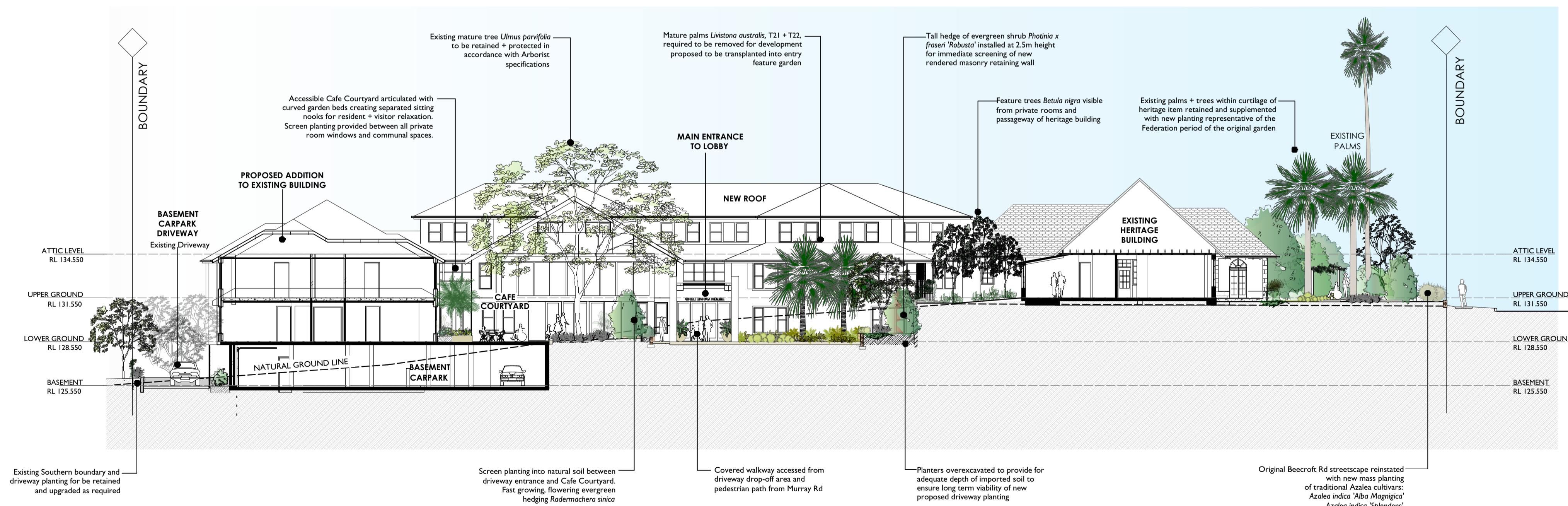
JOB
2020

DWG NO
DA-L05



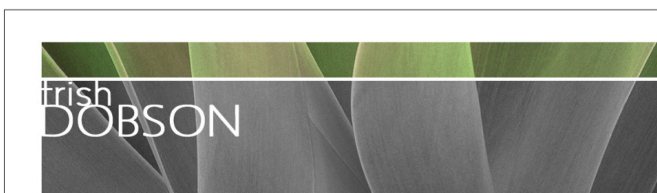
BEECROFT ROAD ELEVATION

SCALE 1:200 @ A1



SECTION THROUGH DRIVEWAY + CAFE COURTYARD

SCALE 1:200 @ A1



trish dobson landscape architecture
34a MARINE PARADE, AVALON NSW 2107
0408 983020
trish@trishdobson.com.au
TRISH DOBSON
REGISTERED LANDSCAPE ARCHITECT #45516 NORTCULTURE
ABN 17 211 486 158

DEVELOPMENT APPLICATION
CHELTENHAM HOUSE
Proposed Aged Care Facility
for Thompson Health Care
144-146 BEECROFT RD, BEECROFT NSW

0m 2m 4m 6m 8m 10m

ELEVATION + SECTION

1:200 @ A1 SCALE
1.12.20 DATE
2010 JOB
DA ISSUE
6 of 6 SHEET
2010 / DA-L06 DWG