

AUSTRALIS
Tree Management



Tree Protection Plan

AS 4970-2009 Protection of trees on development sites

Site Address:

34 Day Road, Cheltenham

Client:

Mrs Janet Loibner

Date:

22 January 2021

Reference:

20211720.5

Prepared By:

Meredith Gibbs


**PO Box 3453,
DURAL NSW 2158
www.australistrees.com.au**

Tree Species List

No.	Species	TreeAZ	TPZ	Status
1	Pittosporum undulatum (Sweet Pittosporum)	Z1	2m	Remove
2	Pittosporum undulatum (Sweet Pittosporum)	Z1	2m	Retain
3	Ligustrum lucidum (Large Leaf Privet)	Z1	2m	Retain
4	Ligustrum lucidum (Large Leaf Privet)	Z1	2m	Retain
5	Callistemon salignus (Willow Bottlebrush)	A	5m	Retain
6	Callistemon salignus (Willow Bottlebrush)	A	4m	Retain
7	Pinus radiata (Monterey Pine)	A	8m	Retain
8	Pinus radiata (Monterey Pine)	Z3	3m	Retain
9	Brachychiton acerifolius (Illawarra Flame Tree)	A	3m	Retain
10	Cinnamomum camphora (Camphor Laurel)	Z	3m	Retain
11	Pittosporum undulatum (Sweet Pittosporum)	Z1	2m	Retain
12	Acer negundo (Box Elder)	A	2m	Retain
13	Brachychiton acerifolius (Illawarra Flame Tree)	A	2m	Retain
14	Pittosporum undulatum (Sweet Pittosporum)	Z1	2m	Retain
15	Pittosporum undulatum (Sweet Pittosporum)	Z3	3m	Retain
16	Grevillea robusta (Silky Oak)	Z1	2m	Retain
17	Pittosporum undulatum (Sweet Pittosporum)	Z3	2m	Retain
18	Callistemon salignus (Willow Bottlebrush)	Z1	2m	Retain
19	Callistemon salignus (Willow Bottlebrush)	Z1	2m	Retain
20	Pittosporum undulatum (Sweet Pittosporum)	Z1	2m	Retain
21	Pittosporum undulatum (Sweet Pittosporum)	Z1	2m	Retain
22	Callistemon salignus (Willow Bottlebrush)	A	3m	Retain
23	Corymbia citriodora (Lemon-scented Gum)	A	4m	Retain
24	Callistemon salignus (Willow Bottlebrush)	A	2m	Retain
25	Syzygium paniculatum (Magenta Lilly Pilly)	A	2m	Retain
26	Grevillea robusta (Silky Oak)	A	2m	Retain
27	Corymbia citriodora (Lemon-scented Gum)	A	5m	Retain
28	Callistemon salignus (Willow Bottlebrush)	A	4m	Retain
29	Acer negundo (Box Elder)	Z1	2m	Retain
30	Pittosporum undulatum (Sweet Pittosporum)	Z1	2m	Retain
31	Callistemon salignus (Willow Bottlebrush)	A	4m	Retain
32	Ligustrum lucidum (Large Leaf Privet)	Z1	2m	Retain
33	Grevillea robusta (Silky Oak)	A	5m	Retain
34	Acer negundo (Box Elder)	Z1	2m	Retain
35	Syzygium paniculatum (Magenta Lilly Pilly)	A	3m	Retain
36	Pittosporum undulatum (Sweet Pittosporum)	A	2m	Retain
37	Pittosporum undulatum (Sweet Pittosporum)	Z1	2m	Retain
38	Pittosporum undulatum (Sweet Pittosporum)	A	2m	Retain
39	Casuarina cunninghamiana (River Oak)	A	7m	Retain
40	Casuarina cunninghamiana (River Oak)	A	7m	Retain

No.	Species	TreeAZ	TPZ	Status
41	Casuarina cunninghamiana (River Oak)	A	4m	Retain
42	Casuarina cunninghamiana (River Oak)	A	8m	Retain
43	Casuarina cunninghamiana (River Oak)	Z1	2m	Retain
44	Grevillea robusta (Silky Oak)	Z1	2m	Retain
45	Angophora costata (Smooth-barked Apple)	Z1	2m	Retain
46	Pittosporum undulatum (Sweet Pittosporum)	Z1	2m	Retain
47	Angophora costata (Smooth-barked Apple)	Z1	2m	Remove
48	Corymbia maculata (Spotted Gum)	Z1	2m	Retain
49	Eucalyptus robusta (Swamp Mahogany)	Z1	2m	Retain
50	Corymbia citriodora (Lemon-scented Gum)	A	5m	Retain
51	Cinnamomum camphora (Camphor Laurel)	Z1	2m	Retain
52	Pittosporum undulatum (Sweet Pittosporum)	Z1	3m	Retain
53	Eucalyptus pilularis (Blackbutt)	A	3m	Retain
54	Eucalyptus pilularis (Blackbutt)	A	7m	Retain
55	Casuarina cunninghamiana (River Oak)	Z1	2m	Retain
56	Casuarina cunninghamiana (River Oak)	Z1	2m	Retain
57	Angophora costata (Smooth-barked Apple)	Z1	2m	Retain
58	Eucalyptus sp (Gum Tree)	Z3	4m	Retain
59	Gone			
60	Eucalyptus botryoides (Bangalay)	A	5m	Retain
61	Angophora costata (Smooth-barked Apple)	Z1	2m	Retain
62	Angophora costata (Smooth-barked Apple)	Z1	2m	Remove
63	Casuarina cunninghamiana (River Oak)	Z4	?	Remove
64	Angophora costata (Smooth-barked Apple)	A	6m	Remove
65	Eucalyptus botryoides (Bangalay)	Z1	2m	Remove
66	Cupressus torulosa (Bhutan Cypress)	Z1	4m	Remove
67	Corymbia citriodora (Lemon-scented Gum)	A	2m	Remove
68	Pittosporum undulatum (Sweet Pittosporum)	Z1	2m	Retain
69	Callistemon salignus (Willow Bottlebrush)	Z1	2m	Remove
70	Eucalyptus microcorys (Tallowwood)	A	8m	Remove
71	Eucalyptus sp (Gum Tree)	A	6m	Remove
72	Angophora costata (Smooth-barked Apple)	Z1	2m	Retain
73	Casuarina cunninghamiana (River Oak)	A	4m	Retain
74	Angophora costata (Smooth-barked Apple)	Z1	2m	Remove
75	Camellia sasanqua (Small-leaved Camellia)	Z1	2m	Retain
76	Olea europaea subsp. cuspidata (African Olive)	Z1	2m	Retain
77	Lophostemon confertus (Queensland Brush Box)	A	?	Remove
78	Lophostemon confertus (Queensland Brush Box)	A	9m	Remove
79	Melaleuca quinquenervia (Broad-leaved	A	6m	Remove
80	Melaleuca quinquenervia (Broad-leaved	A	7m	Remove

No.	Species	TreeAZ	TPZ	Status
81	Melaleuca quinquenervia (Broad-leaved	A	6m	Remove
82	Callistemon salignus (Willow Bottlebrush)	A	5m	Remove
83	Acer palmatum (Japanese Maple)	Z1	3m	Retain
84	Camellia sasanqua (Small-leaved Camellia)	Z1	2m	Remove
85	Buxus sp (Box)	Z1	2m	Remove
86	Grevillea robusta (Silky Oak)	A	5m	Retain
87	Acer negundo (Box Elder)	Z1	3m	Retain
88	Leptospermum petersonii (Lemon Scented Tea	Z4	4m	Retain
89	Callistemon salignus (Willow Bottlebrush)	Z1	2m	Retain
90	Pinus radiata (Monterey Pine)	A	6m	Retain
91	Angophora costata (Smooth-barked Apple)	Z1	2m	Retain
92	Angophora costata (Smooth-barked Apple)	Z1	2m	Retain
93	Angophora costata (Smooth-barked Apple)	A	2m	Remove
94	× Cupressocyparis leylandii 'Leighton	Z1	2m	Retain
95	× Cupressocyparis leylandii 'Leighton	Z1	2m	Retain
96	× Cupressocyparis leylandii 'Leighton	Z1	2m	Retain
97	× Cupressocyparis leylandii 'Leighton	Z1	2m	Retain
98	× Cupressocyparis leylandii 'Leighton	Z1	2m	Retain
99	Pistacia chinensis (Pistachio)	A	3m	Retain
100	Camellia sasanqua (Small-leaved Camellia)	Z1	2m	Retain
101	Tristaniopsis laurina (Water Gum)	A	6m	Retain
102	Olea europaea subsp. cuspidata (African Olive)	Z1	2m	Retain
103	Pistacia chinensis (Pistachio)	A	5m	Remove

Title:	Client:	Scale		<div><div>AUSTRALIS</div><div>Tree Management</div><div></div></div> <div>PO Box 3453, DURAL NSW 2158 Mobile: 0407 103 895 www.australistrees.com.au</div>
Reference:	Site Address:	Prepared By:	Page:	
Date:				
Tree Species List	Mrs Janet Loibner			
20211720.5	34 Day Road, Cheltenham	Meredith Gibbs	2 / 4	
22/01/2021				

Legend

Tree Protection Zone

Tree Protection Fencing

Trees Proposed for Removal

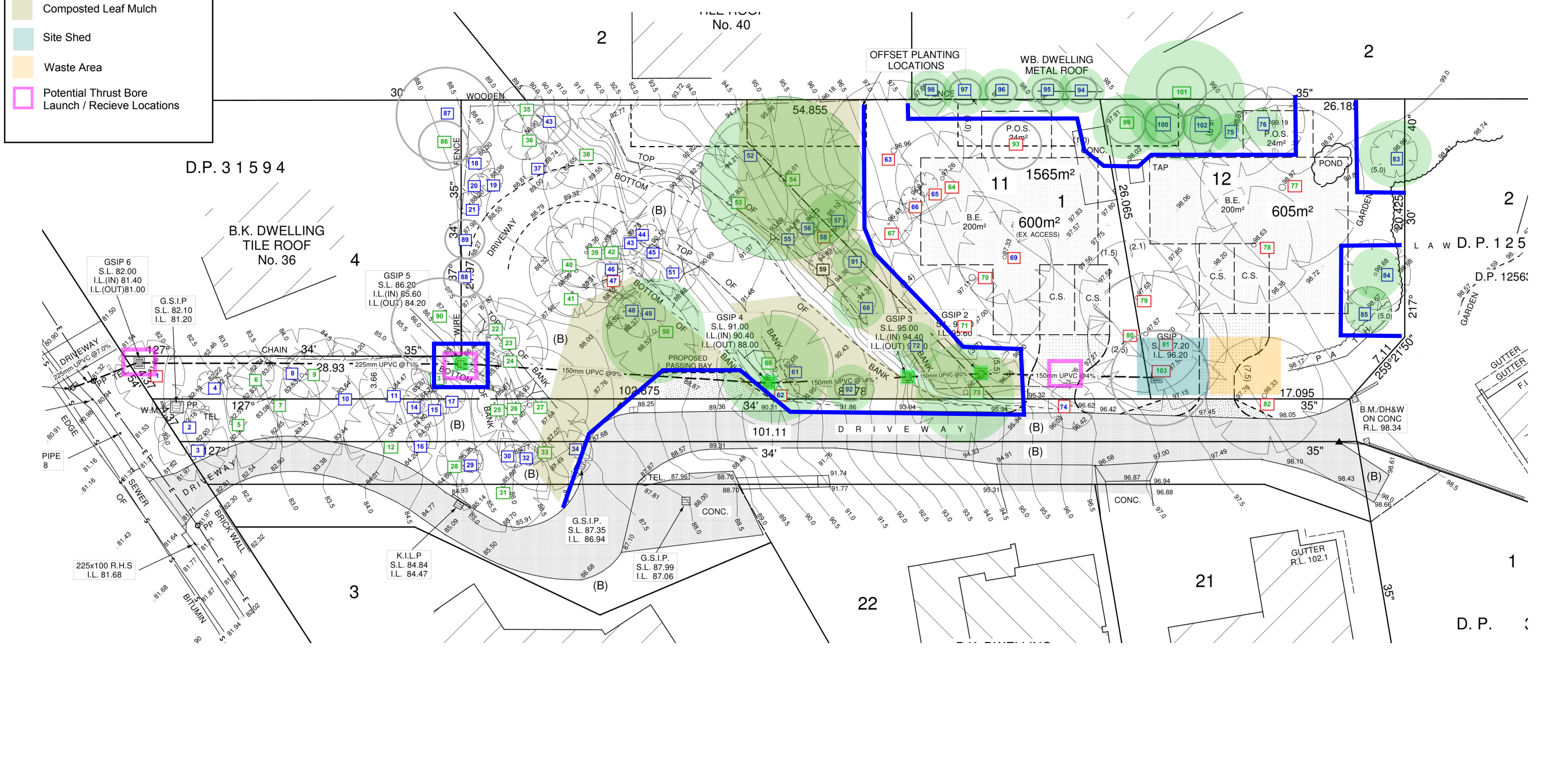
Hand Excavation

Composted Leaf Mulch

Site Shed

Waste Area

Potential Thrust Bore Launch / Recieve Locations



<div>Title:</div> <div> Tree Protection Plan & Specifications AS 4970-2009 Protection of trees on development sites </div>	<div>Client:</div> <div> Mrs Janet Loibner </div>	<div>Scale</div> <div> <div>0210</div> <div>meters</div> </div>	<div> <div>↑</div> </div>	<div> <div> AUSTRALIS Tree Management </div> <div> </div> <div> PO Box 3453, DURAL NSW 2158 Mobile: 0407 103 895 www.australistrees.com.au </div> </div>
<div>Reference:</div> <div> 20211720.5 </div>	<div>Site Address:</div> <div> 34 Day Road, Cheltenham </div>	<div>Prepared By:</div> <div> Meredith Gibbs </div>	<div>Page:</div> <div> 3 / 4 </div>	
<div>Date:</div> <div> 22/01/2021 </div>				

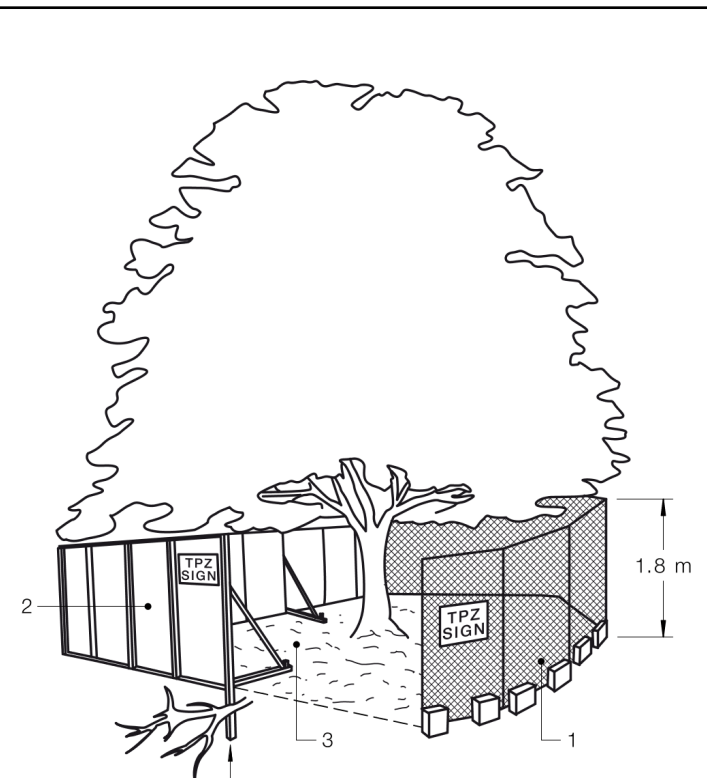
Project Arborist Monitoring	
1	All tree related matters must be discussed with the project arborist
2	The builder / site manager is responsible to inform the project arborist of any issues during works
3	The project arborist MUST supervise all work within any Tree Protection Zone
4	The project arborist must maintain a monthly log including site visits, notes and photographs
5	The project arborist must provide feedback to the owner / builder / notes and site manager / council.
6	All tree related matters must be discussed with the project arborist
7	Any pruning required must be in accordance with AS 4373-2007 Pruning of Amenity Trees, Standards Australia and completed by a level 3 qualified arborist or higher. Climbing spikes MUST NOT be used.

Project Hold Points		
Hold Point	Task	Timing
1	Tree Protection Plan & Specifications must be onsite prior to works	Prior to demolition of structures
2	Project arborist must oversee tree retention	
3	Project arborist must inspect Tree Protection Fencing including adequate signage	
4	The builder / site manager is responsible to inform the project arborist of any issues during works	As required
5	Project arborist must inspect trees monthly	During all construction works
6	Final Tree Inspection	Post construction

Activities Excluded From Tree Protection Zones	
1	No soil level changes
2	Machine excavation including trenching
3	Excavation for silt fencing
4	Cultivation
5	Preparation of chemicals
6	Parking of vehicles and machinery
7	Refuelling
8	Dumping of waste
9	Wash down and cleaning of equipment
10	Placement of fill
11	Lighting of fires
12	Temporary or permanent installation of utilities
13	Physical damage to the tree
14	Bolt cutters or wire cutters must not be used for root pruning

Activities Permissible Within Tree Protection Zones	
1	Any excavation work within a Tree Protection Zone must be monitored by the project arborist.
2	Roots measuring over 30mm in diameter within the Tree Protection Zone and outside the Structural Root Zone may be pruned at the discretion of the project arborist.
3	Root exposure must be applied with hand tools or Air Spade to prevent damage to the root system.
4	All root pruning equipment must be sharp and clean. Secateurs, loppers or pruning saws should be used and can be cleaned with methylated spirits to prevent disease and pathogen spread. No bolt cutters.
5	Any roots exposed must be wrapped or covered with hessian or cloth and kept moist to prevent drying out and sunburn until backfilling occurs.
6	Backfill must be watered in and mulched with composted leaf mulch.

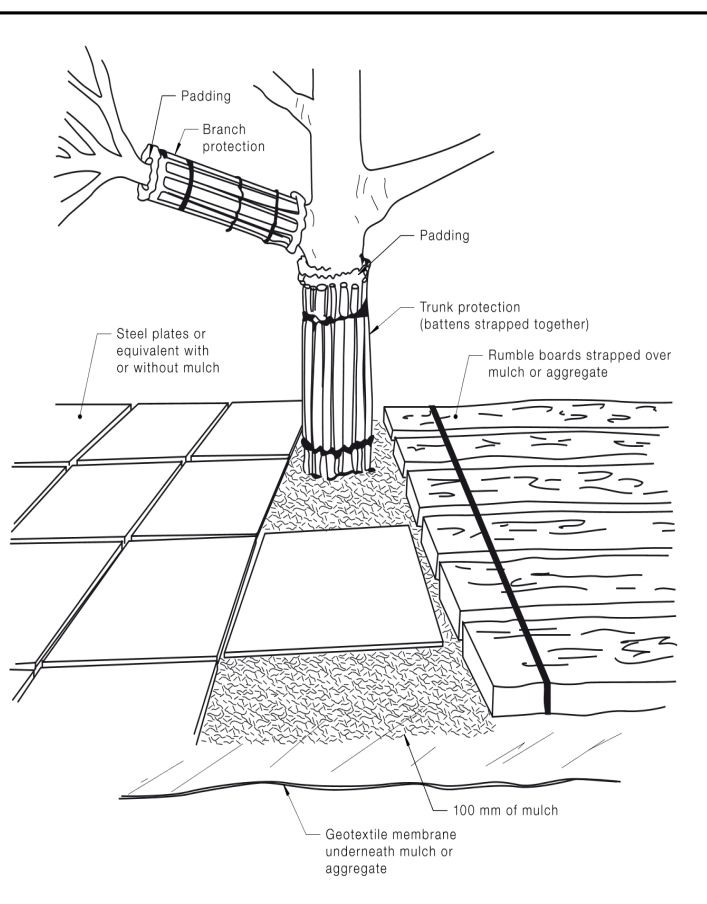
Tree Protection Fencing	
1	A 1.8m chain wire fence with concrete footings placed in accordance to tree protection zones and AS 4687. The TPZ distances are located within the tree schedule. All tree parts must be protected. This includes roots, trunks and branches.
2	Signage - "Tree Protection Zone, No Entry". With project arborist contact details to be attached to the protective fencing.
3	Within the TPZ fencing up to 50mm of COMPOSTED organic mulch must be applied to help retain moisture levels, suppress weed growth and reduce tree stress. Mulch must be in accordance with AS4454-2012 Composts, soil conditioners and mulches.
4	All trees must be thoroughly watered regularly throughout the development works. This is dependent on weather conditions where more water applied during hot and or winding weather.
5	Tree protection fencing must include shade cloth attached to the fencing to reduce transport of dust, particulates and liquids from entering the TPZ.




Trunk Protection	
1	Trunk protection shall consist of hessian wrapped around the trunk.
2	Two metre lengths of timber (100 x 50mm) spaced at 100-150mm centres secured together with 2mm galvanised wire.
3	These shall be strapped around the trunk and not fixed to the tree in any way to avoid mechanical injury or damage.

Rumble Boards	
1	Ground protection If temporary access for machinery is required within the TPZ ground protection measures will be required.
2	The purpose of ground protection is to prevent root damage and soil compaction within the TPZ.
3	Measures may include a permeable membrane such as geotextile fabric beneath a layer of mulch or crushed rock below rumble boards.
4	These measures may be applied to root zones beyond the TPZ.

Foot Traffic Platforms	
1	Ground protection against foot traffic is required within the TPZ. Scaffolding with timber boards attached



Title: <div>Tree Protection Plan & Specifications</div> <div>AS 4970-2009 Protection of trees on development sites</div>	Client: <div>Mrs Janet Loibner</div>			<div><div><div>AUSTRALIS</div><div>Tree Management</div></div><div></div><div><div>PO Box 3453, DURAL NSW 2158</div><div>Mobile: 0407 103 895</div><div>www.australistrees.com.au</div></div></div>
Reference: <div>20211720.5</div>	Site Address: <div>34 Day Road, Cheltenham</div>	Prepared By: <div>Meredith Gibbs</div>	Page: <div>4 / 4</div>	
Date: <div>22/01/2021</div>				