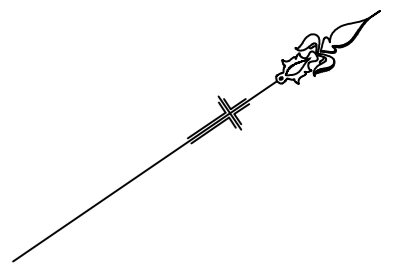


1 2 3 4 5 6 7 8

**NOTES:**

- THIS PLAN IS NOT A PLAN OF SURVEY AND NO BOUNDARIES HAVE BEEN SURVEYED OR MARKED.
- DISTANCES AND AREAS ARE BY TITLE &/OR DEED ONLY AND ARE SUBJECT TO FINAL SURVEY AND COUNCIL APPROVAL.
- THIS SUBDIVISION LAYOUT IS A CONCEPT ONLY. EASEMENTS AND RESTRICTIONS MAY BE CREATED ON THE FINAL SUBDIVISION PLAN WHICH IS SUBJECT TO COUNCIL APPROVAL AND REGISTRATION.
- THIS SUBDIVISION LAYOUT SHOULD NOT BE USED FOR FINANCIAL PLANNING PRIOR TO COUNCIL APPROVAL.
- THIS DRAWING IS SUBJECT TO COPYRIGHT. IT MUST NOT BE REPRODUCED IN WHOLE OR PART WITHOUT PRIOR WRITTEN CONSENT OF COMPLETE PRECISION SURVEYS PTY LIMITED.
- THE TITLE BLOCK AND THESE NOTES FORM AN INTEGRAL PART OF THIS PLAN AND SHOULD NOT BE REMOVED WITHOUT CONSENT OF COMPLETE PRECISION SURVEYS PTY LIMITED.

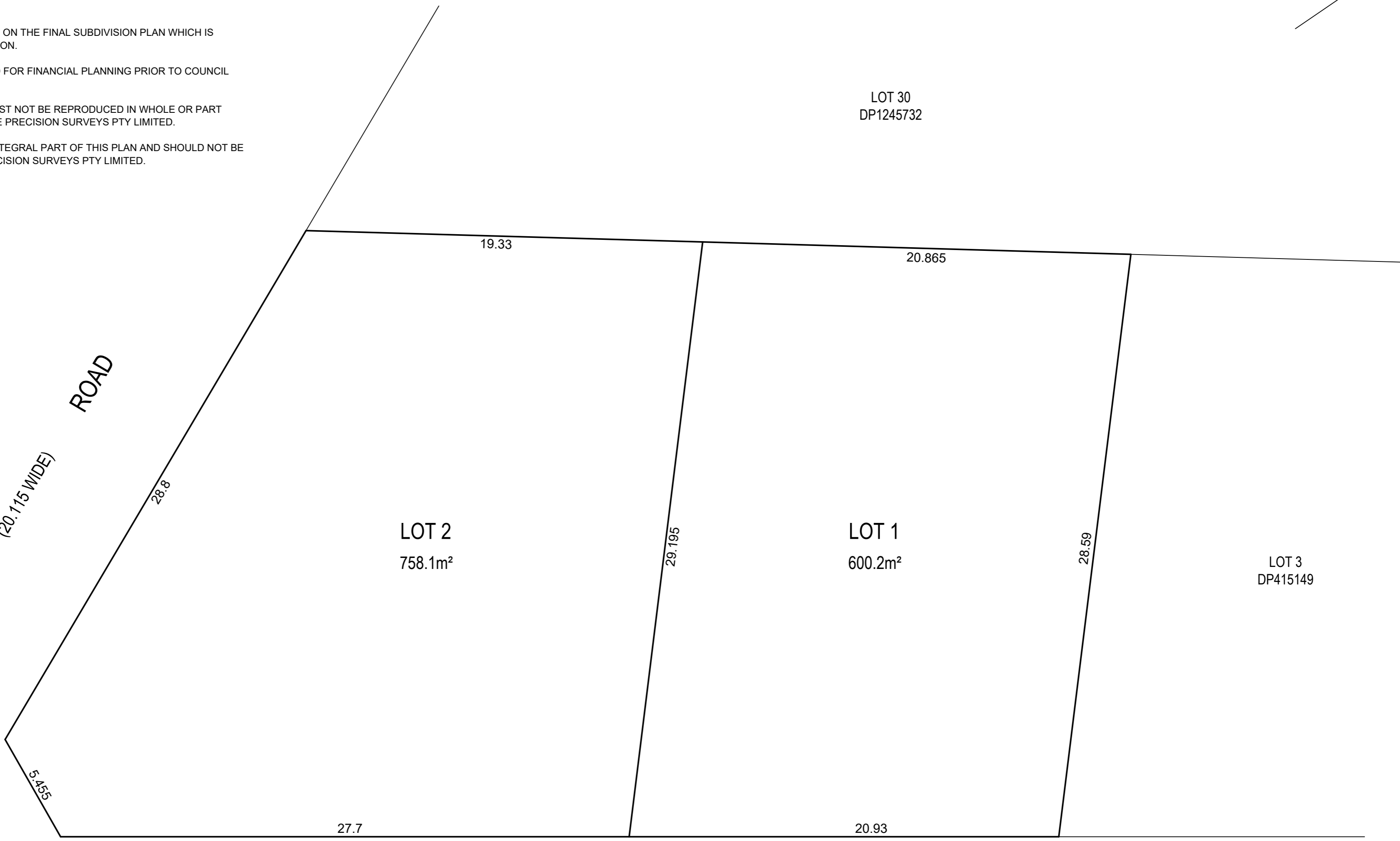


A  
B  
C  
D  
E  
F

A  
B  
C  
D  
E  
F

MALTON ROAD  
(20.115 WIDE)

NORFOLK ROAD  
(20.115 WIDE)



LOT 30  
DP1245732

LOT 2  
758.1m<sup>2</sup>

LOT 1  
600.2m<sup>2</sup>

LOT 3  
DP415149

REV.	DESCRIPTION	DATE	APPR.	CLIENT/ PROJECT:	PLAN BY:	CHECKED:	GRID:	TITLE	SHEET 1
				JK Project 2 Pty Ltd	 <small>Phone: 0466 335 477 Email: contact@cpsurveys.com.au Web: www.cpsurveys.com.au A.B.N. 38 637 785 070</small>	A.S	-	PLAN OF PROPOSED SUBDIVISION OF LOT 31 IN DP 1245732 AT 155 NORFOLK ROAD NORTH EPPING NSW L.G.A: HORNSBY	OF 1
						M.C	1:150@A2		
						THIS DRAWING IS SUBJECT TO COPYRIGHT. IT MUST NOT BE REPRODUCED IN WHOLE OR PART WITHOUT PRIOR WRITTEN CONSENT OF COMPLETE PRECISION SURVEYS Pty. Limited.		CONTOUR INTERVAL:	REVISION:
						-	PLAN DATE:	PROJECT REFERENCE:	A
							23-02-2022	CP136 - DA	

1 2 3 4 5 6 7 8