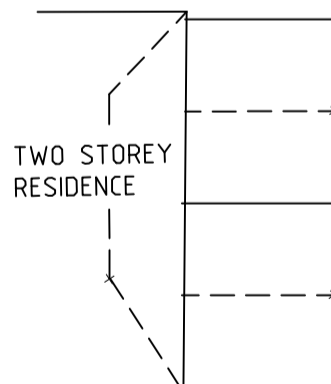
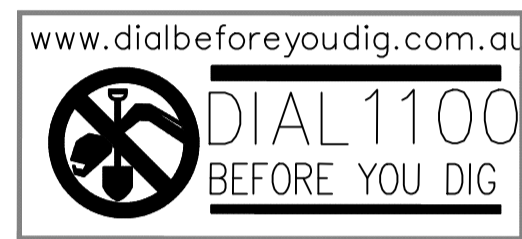


**CAUTIONS:**

- 1) THIS SURVEY HAS BEEN PREPARED FOR THE PURPOSE OF DETAIL & CONTOUR ONLY. THE LOCATION OF ANY FENCING OR STRUCTURE IN RELATION TO THE BOUNDARIES HAS NOT NECESSARILY BEEN EXACTLY DETERMINED.
- 2) UTILITY SERVICES SHOWN HAVE BEEN LOCATED BY SURVEY WHERE THEY ARE VISIBLE AND APPARENT. HOWEVER, THE APPROXIMATE POSITION OF UNDERGROUND SERVICES MAY HAVE ALSO BEEN PLOTTED FROM UTILITY AUTHORITY PLANS, AND THIS PLAN MUST BE READ IN CONJUNCTION WITH THE RELEVANT UTILITY AUTHORITY PLANS.
- 3) THE LOCATION OF SERVICES ARE TO BE VERIFIED BY OBTAINING CURRENT INFORMATION FROM "DIAL BEFORE YOU DIG" (PHONE 1100) PRIOR TO DESIGN/CONSTRUCTION WORKS. ALTERNATIVELY, THE EXACT LOCATION OF SERVICES SHOULD BE DETERMINED BY FIELD SURVEY IN CONSULTATION WITH THE SERVICE AUTHORITIES WHERE DEEMED NECESSARY.



LOT 73  
D. P. 8 6 2 0 2 4

LOT B  
D. P. 9 6 3 6 1 6

— W — W —	DENOTES SYDNEY WATER CORPORATION MAIN
— S — S —	DENOTES SYDNEY WATER CORPORATION SEWER MAIN
— T — T —	DENOTE TELSTRA / OPTUS UNDERGROUND CONDUITS (APPROX. LOCATION ONLY)
— E — E —	DENOTES AERIAL ELECTRICAL CABLES
— G — G —	DENOTE GAS MAINS UNDERGROUND CONDUITS (APPROX. LOCATION ONLY)
■	DENOTES HYDRANT APPROXIMATE POSITION
⊙	DENOTES STOP VALVE
⊠	DENOTES TELSTRA PITS LARGE & SMALL
●	ELECTRICAL POWER POLE

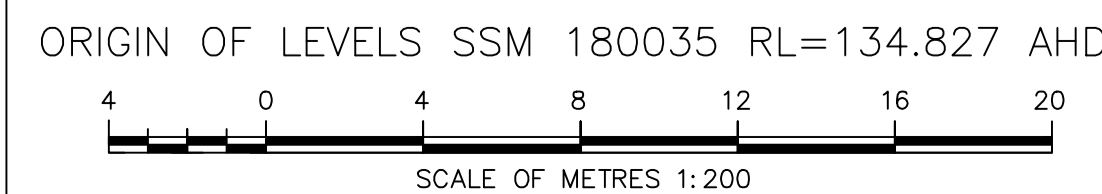
SCALE: 1:200 @ A1 SHEET

DATUM: Australian Height Datum

DATE: 11/04/2014

STEPHEN THORNE AND ASSOCIATES PTY LTD  
CONSULTING SURVEYORS  
48 MANN STREET, GOSFORD, 2250  
Phone (02)4323-1255 Facsimile (02)4324-2226  
P.O. BOX 1315 GOSFORD NSW 2250  
A.C.N. 057 514 860 A.B.N. 51 057 514 860

DETAIL AND CONTOUR SURVEY OVER  
LOTS 5 & 6 D.P. 4898 AND LOTS 1 & 2  
D.P. 44486 AND LOT 1 D.P. 958045  
NOS. 95,97 & 99 COPELAND ROAD, BEECROFT

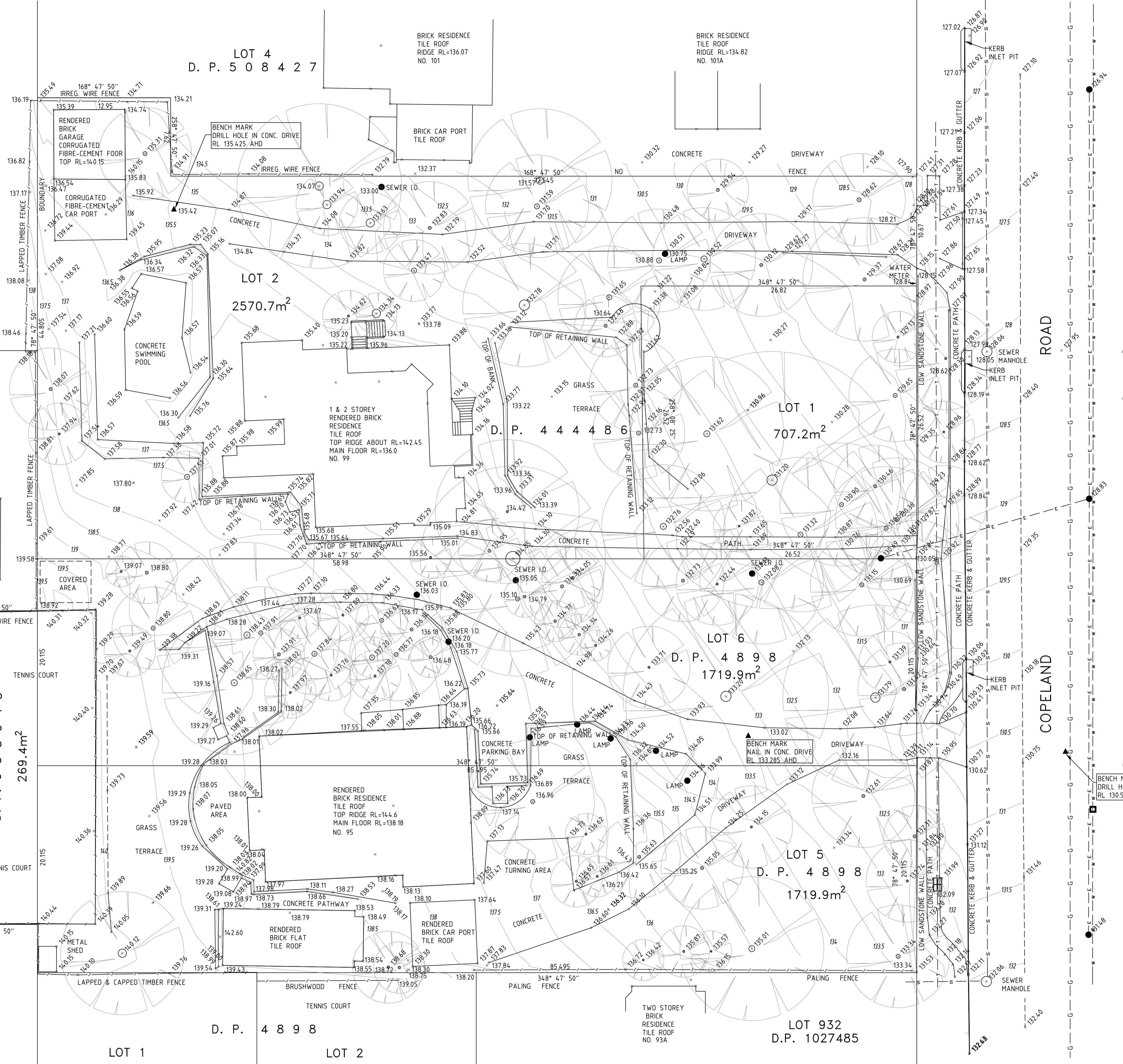


amendments

PLAN NUMBER  
**6886**  
ISSUE  
**A**

SHEET 1 OF 1 SHEETS

CAD FILE: 6886\_DET.dwg  
THIS PLOT: 10-04-2014 16:32  
REFERENCE: 6886



LOT 1  
D. P. 9 5 8 0 4 5  
269.4m<sup>2</sup>

LOT 2  
2570.7m<sup>2</sup>

LOT 5  
D. P. 4 8 9 8  
1719.9m<sup>2</sup>

LOT 6  
D. P. 4 8 9 8  
1719.9m<sup>2</sup>

LOT 932  
D.P. 1027485

LOT 73  
D. P. 8 6 2 0 2 4

LOT B  
D. P. 9 6 3 6 1 6

LOT 95  
D. P. 4 8 9 8  
1719.9m<sup>2</sup>

LOT 97  
D. P. 4 8 9 8  
1719.9m<sup>2</sup>

LOT 99  
D. P. 4 8 9 8  
1719.9m<sup>2</sup>

LOT 732  
D. P. 8 6 2 0 2 4