



Outcomes Report

Hornsby Park 'Plan Your Parkland' Community Engagement

Hornsby Shire Council
June 2017

Contact

Calli Brown
calli@elton.com.au
9387 2600

Prepared by

Katya Dobinson

Reviewed by

Calli Brown

www.elton.com.au

consulting@elton.com.au
Sydney | Canberra | Darwin
ABN 56 003 853 101

Contents

1	EXECUTIVE SUMMARY	3
2	SURVEY RESULTS	7
2.1	Former Quarry Area	10
2.2	Old Crusher Plant	12
2.3	Old Mans Valley	14
2.4	Open text box	16
3	EMAIL AND WRITTEN SUBMISSIONS	18
4	COMMUNITY DELIBERATIVE FORUM	23
4.1	CDF 1	23
4.2	Quarry site tour	24
4.3	CDF 2	26
4.4	CDF 3	26
4.5	Overall comments and recommendations for the park and continuing community consultation	30
5	STAKEHOLDER MEETINGS	31
5.1	Stakeholder meeting with representatives of the bushwalking and environmental community	31
5.2	Stakeholder meeting with representatives of the mountain biking community	31
5.3	Presentation at Hornsby Shire Heritage Advisory Committee Meeting	32
5.4	Stakeholder meeting with representatives of the Hornsby Chamber of Commerce	32
5.5	Hornsby Aboriginal and Torres Strait Islander Consultative Committee meeting.	32
5.6	Sportsground users as stakeholders	33
6	COMMUNITY INFORMATION AND FEEDBACK SESSIONS	34
7	RECOMMENDATIONS	36
7.1	Findings of the engagement	36
7.2	Ongoing engagement	36
	APPENDICES	38

1 Executive summary

- » 'Plan Your Parkland' engagement was conducted over a six week period.
- » The aim of the engagement was to encourage residents to raise as many opinions and ideas for future activities and attractions as possible.
- » Consistent information and messaging was disseminated and people were given a variety of ways to provide input and feedback.
- » Engagement techniques were designed to ensure that public discussion was balanced by a mix of views and opinions, particularly trying to engage with people who are normally not involved in public discourse.
- » The engagement activities were enthusiastically received by the Hornsby community with a high-level of participation.
- » Across all engagement activities with community members and stakeholders, people were overall supportive of the project. They believed the park could become a unique asset for the Hornsby community.
- » The high-level of community participation demonstrated that the primary objective of the engagement to "ensure that the transformation of Hornsby park is designed, owned, used and loved by residents" was achieved.
- » Key ideas for the park that emerged from the engagement activities included:
 - > a mix of passive and active recreation activities
 - > a space to enjoy the park's natural and environmental assets
 - > a space set aside for commercial activities e.g. a café/restaurant
- » There was strong public appetite for the community to play an important part in the decision-making process until the park opens in 2023.

'Plan Your Parkland' activities

- 'Plan Your Parkland' – a call for public submissions and an online survey via a dedicated website
- Community Deliberative Forum / randomly-selected residents participating
- Community Information and Feedback Sessions in Hornsby Mall
- Traditional media and social media posts (newspapers, Twitter and Facebook)
- Email 'blasts' to approximately 40,000 email addresses in Council's extensive database, posters and flyer distribution in Shire-wide facilities

It is envisaged that these activities will be extended and developed upon in future engagement stages throughout the project's life cycle.

Breadth and depth of engagement



1236

surveys received
and analysed



74%

of survey respondents
were Hornsby Shire
residents



118

written and email
submissions received
and analysed



16

members of the
Community Deliberative
Forum



600

visitors to Community
Information and
Feedback Sessions
(approximately)



17

facebook and
Instagram posts



8

email blasts sent to
Council database



12

advertisements in six
local and shire-wide
newspapers

From our engagement with the community, the images below represent the most popular suggestions for the park:



Walking tracks



Picnic areas and open spaces



Mountain biking



Environmental



Cafés / restaurants



Arts / community / historical facilities

Key Themes



Across the survey and submission results, there was strong support for creating a multi-use parkland that could be enjoyed by people of all ages, pursuing a diverse range of interests.

Creating bushwalking tracks, mountain biking trails, boardwalks, viewing platforms and multi-use paths was important to a large percentage of survey respondents and the majority of people who made a submission.

Maintaining and enhancing the natural and historical features of the park, including the diatrema wall, Endangered Ecological Communities and other key heritage elements was strongly supported by survey respondents and those who made a submission.

72% of survey respondents requested a cafe in the old Crusher Plant.

Including facilities like cafés and restaurants, function centres, an amphitheatre and open spaces to host events was important to 35% of people who made a submission.

Swimming facilities and making good use of the quarry lake was strongly supported by survey respondents and those who made a submission.

There was support for sporting facilities in Old Mans Valley. **However, there was no specific sporting facility that received the most support.** Suggestions made were for cricket facilities, **an athletic track, a soccer field** and multi-use oval.

2 Survey results

Survey design

The dedicated 'Plan Your Parkland' website at hornsbypark.com.au asked residents to share their ideas. It also contained survey questions and open submission spaces.

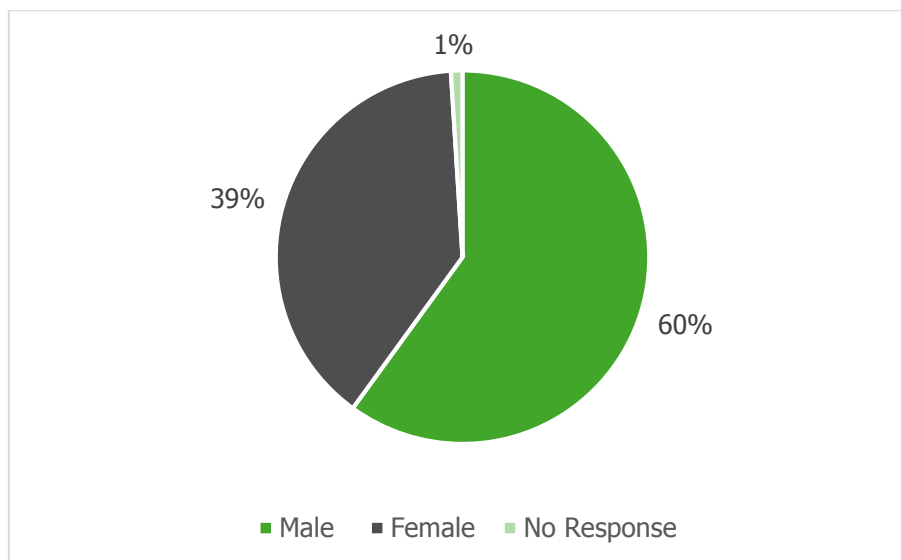
The survey consisted of 3 closed questions to capture respondents' demographics. The site-specific questions allowed respondents to select a certain number of choices and were also allowed to leave any additional comments in the free text box. The survey concluded with a free text box which invited respondents to leave other comments they wanted to contribute, along with the opportunity to upload supporting documentation and/or images.

Survey results

Over the six week consultation period (from 15 February 2017 to 29 March 2017), 1236 online surveys were completed and analysed.

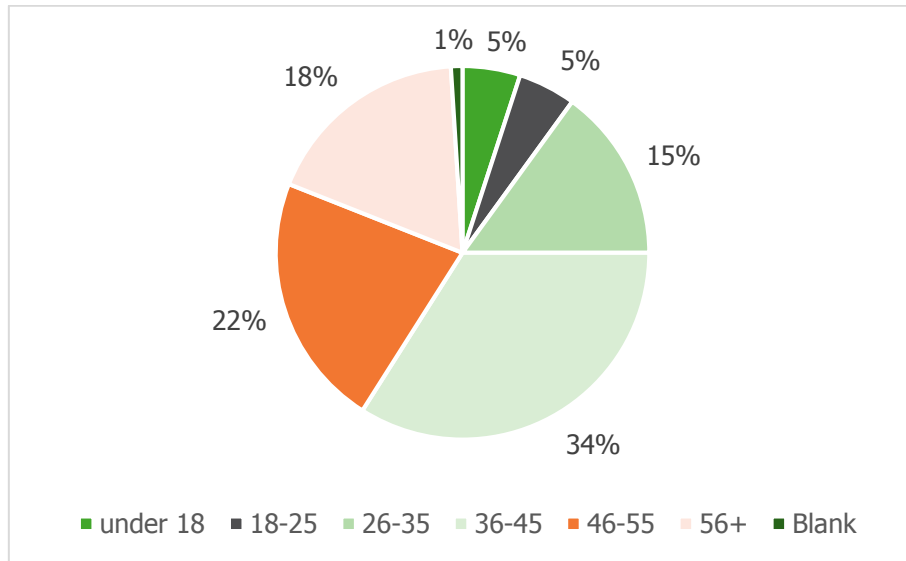
Gender breakdown

Over half of the respondents were male.



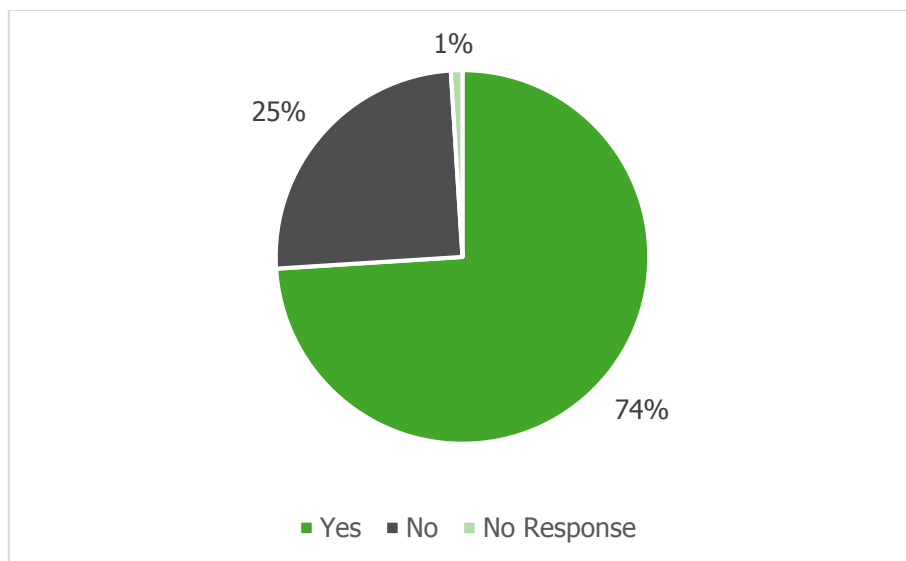
Breakdown age of respondents

People aged between 26 and 45 completed almost half of all surveys (49%).

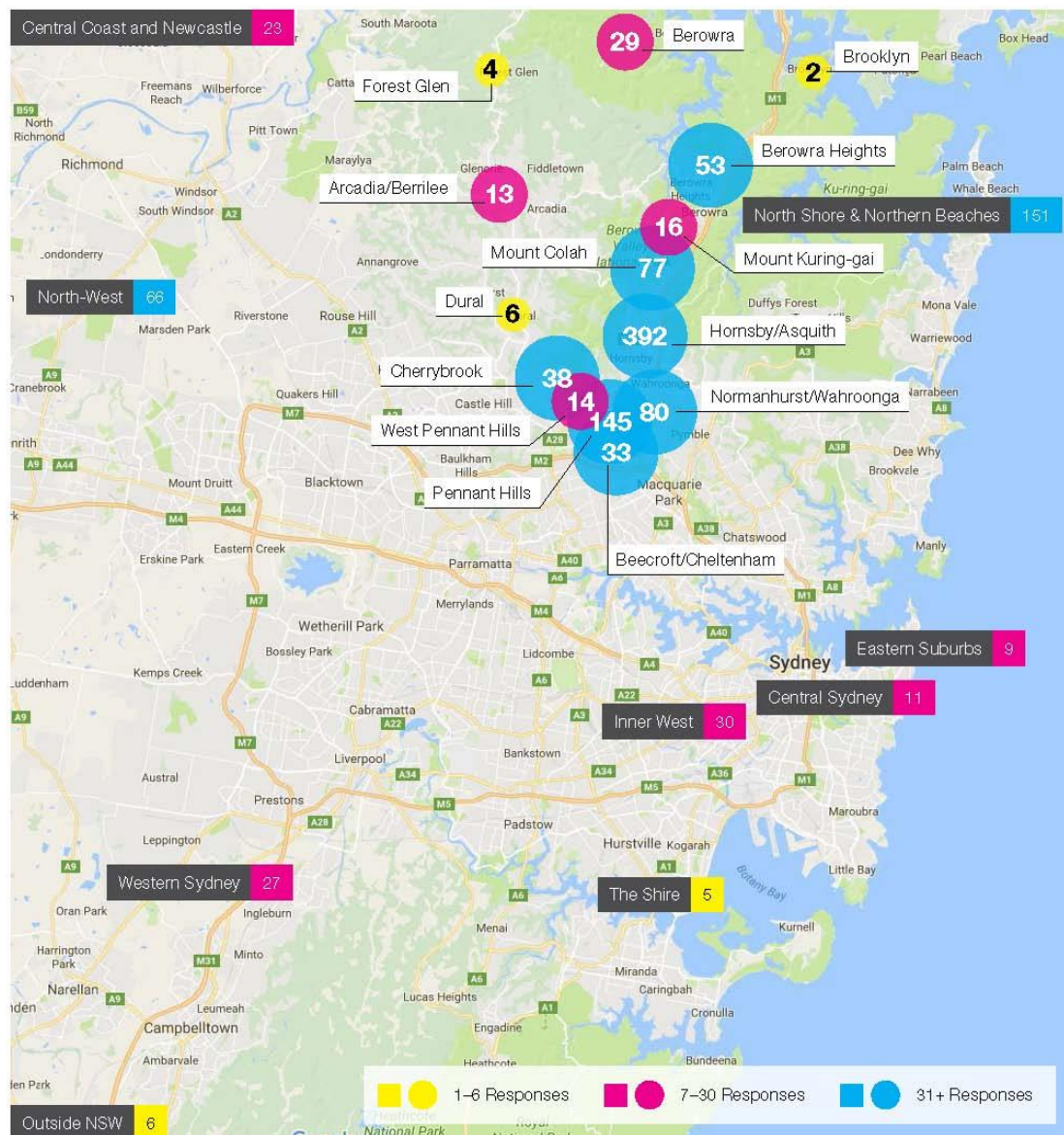


Breakdown by area

Almost three quarters of the surveys (74%) were completed by Hornsby LGA residents.



The map below indicates the breakdown of survey respondents by their post-code.



2.1 Former Quarry Area

Survey Results

A large percentage of survey respondents indicated their aspirations for the Quarry area to allow visitors **to view and experience the dramatic landscape setting of the site and surrounding natural environment**. Almost 60% of respondents selected walking trails and 50% of respondents selected boardwalks and viewing platforms. This preference was also reflected in the stakeholder meetings and written submissions.

Facebook comment:

"Plenty of open space with trees etc for shady picnics."

Picnic facilities were also popular with 54% of respondents selecting this option in the survey. Comments in the open text box supported the provision of these facilities, with many commenting that passive recreation overlooking the quarry diatreme would be an ideal means of capitalising on

one of the park's natural features.

Using **the quarry lake for swimming and other water recreation activities was of high importance** for many respondents. 48% requested a swimming lake in the former Quarry and 22% of the open comments for the former quarry requested either water recreation or swimming facilities.

Facebook comment:

"A waterpark would be great similar to Pirrama park in Pymont."



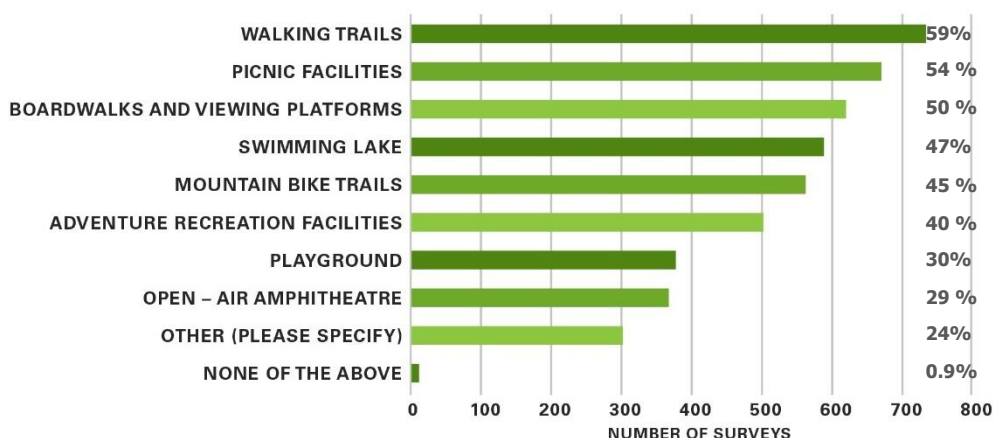
Survey:

"There needs to be linkages for wildlife corridors and also established bike/walking tracks."

Submission:

"The east face [of the diatreme] is probably the finest example in the country."

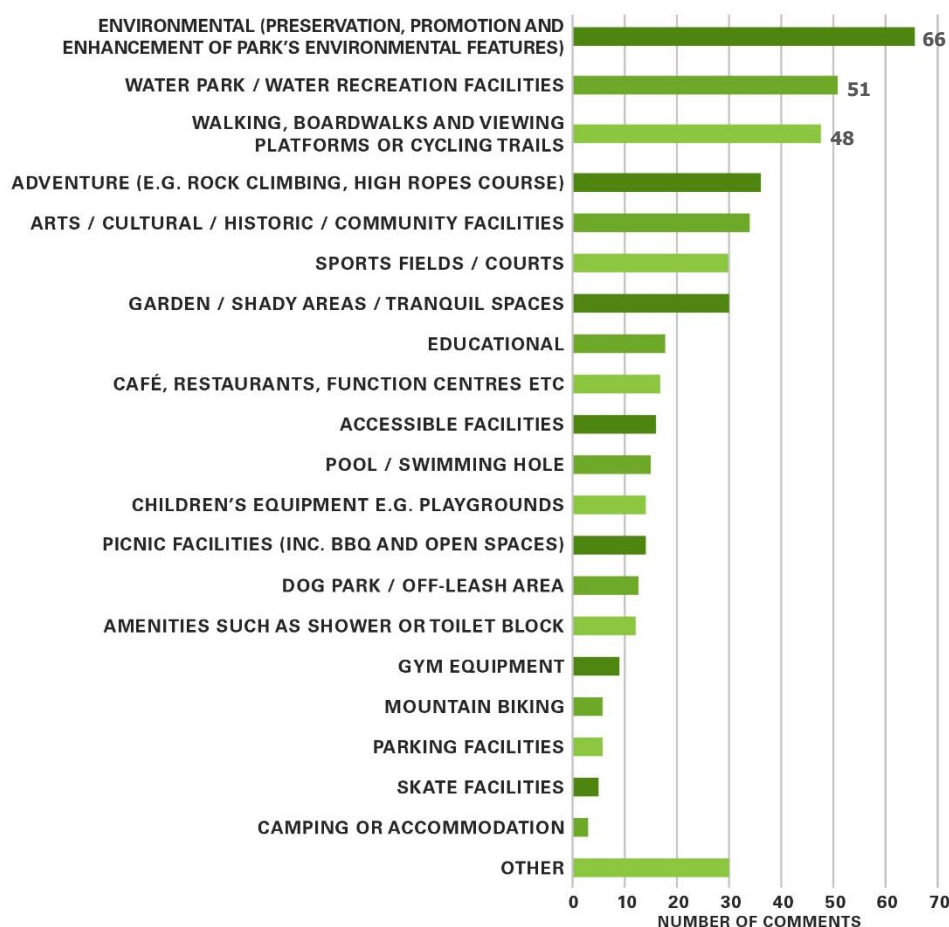
Q. What kind of facilities would you like to see in the former Quarry area of the Park? (Maximum 5 choices)



Former Quarry Area Free text box

A free text box was provided for respondents to leave any additional thoughts about the former quarry area.

Across the park's three sites, **environmental matters** were commonly expressed in the free text box. This included comments about **protecting, preserving and enhancing the natural environment** (including the native flora/fauna and the diatrema wall) and using the space to create **connections between the community and the local environment**. Respondents emphasised the importance of respecting and regarding the park's natural environment, and ensuring that **on-site activities contribute to, rather than negatively impact, the local environment**. These views were also reflected in the email and written submissions and stakeholder meetings.



Stakeholder:

"Longer, interconnected trails moving through the former quarry area would cater to walkers of all levels and experience."

Submission:

"The water could be used for water activities such as water polo, canoe polo and pontoons would facilitate a stage for theatre, open air concerts such as Opera in the Quarry."

Submission:

"This is a wonderful opportunity for Hornsby to become an eco-tourist destination providing a combination of natural wild life, entertainment and healthy lifestyle in a bush setting that is safe for all ages and ecologically sound."

Survey:

"This is what unstructured recreation is all about: the freedom to circulate in nature by whatever non-motorised means one chooses. I urge Hornsby Council to make this park a hub for unstructured recreation."

2.2 Old Crusher Plant

Survey Results

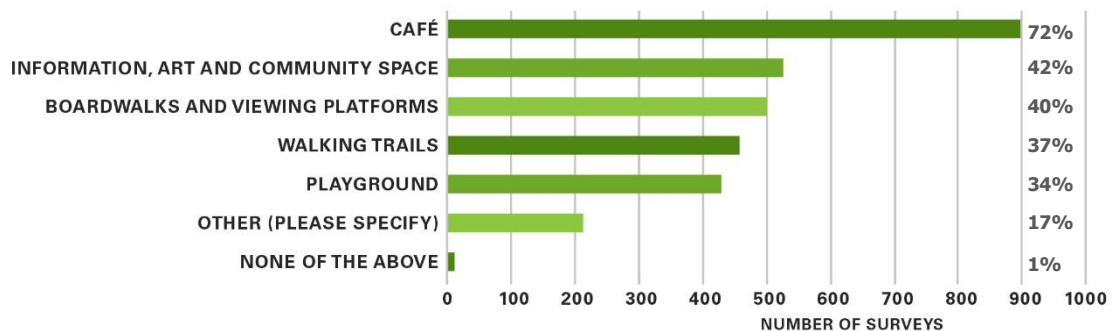
The most popular survey response of any question (from all three surveys) was the opportunity to **provide a café in the old Crusher Plant** with 72% of respondents selecting this option. Boardwalks and viewing platforms (41%) and walking trails (37%) were again popular choices for this location.

43% of applicants requested **an information, art and community space at the old Crusher plant**. Similarly, the majority of respondents who raised their ideas in the free text box also requested an area for arts/cultural/historic education facilities.

Facebook comment:

"Amphitheatre for bands, sessions on Sunday, carols by candlelight, food and wine festivals, lounge chairs and seating for outdoor movies, funky café... This space needs to be for all not just young and families. The teenagers of Hornsby need to feel like they are considered and have a real place to meet."

Q. What kind of facilities would you like to see at the old Crusher Plant in the Park? (maximum 3 choices)



Survey:

"Our community is diverse. Let's harness this and create a space where we can hold multicultural festivals, concerts, theatre, food trucks, art shows etc."

Submission:

"There is great potential for paid guided walks with volunteers, and other educational opportunities based on the geology and cultural history. The old crashing plant buildings could become an education centre."



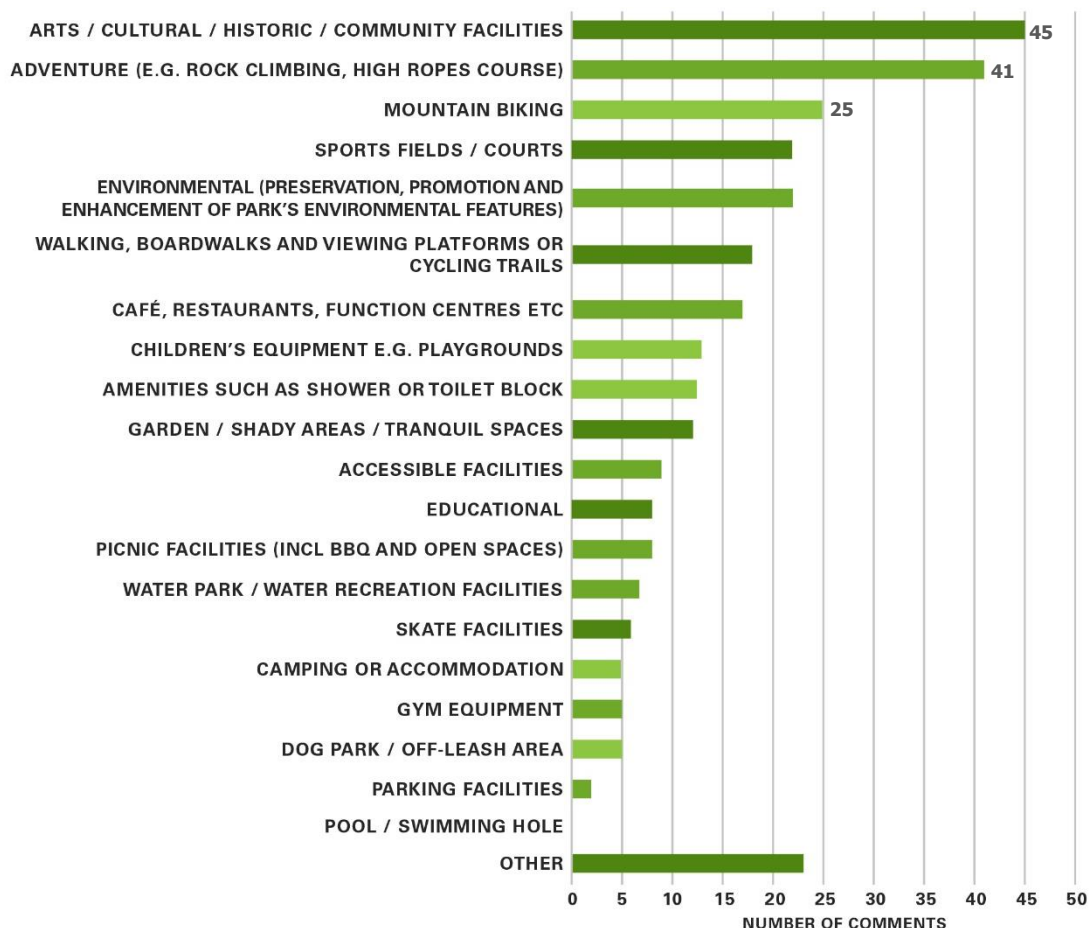
Stakeholder:

"This area would be the ideal location for a multi-use space that could be used by business, community and educational groups."

Old Crusher Plant Free Text Box

A free text box was provided for respondents to leave any additional thoughts about the old Crusher Plant.

A large number of respondents who left comments in the free text box thought the old Crusher Plant could also be a suitable location for **arts/cultural/historic/community facilities and adventure facilities such as a rock climbing wall.**



Submission:

"An adventure playground, swimming area and cultural facilities would be such a great addition as it would give my whole family even more things to do in the area!"

Submission:

"I'd like to suggest a cafe with an adjacent children's park/play area - parents can use the cafe while the children use the play area."

2.3 Old Mans Valley

Survey Results

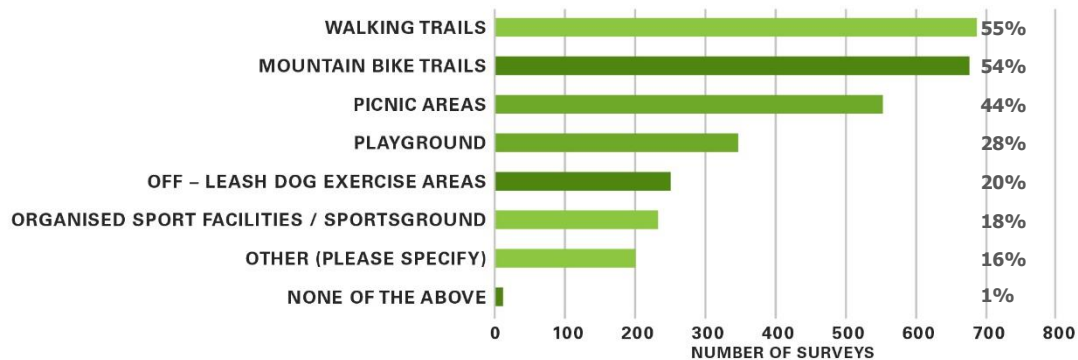
Walking trails (56%) and mountain bike trails (55%) were survey respondents' preferred options for Old Mans Valley. Extending the trails and ensuring this area was conducive to both mountain biking and bushwalking was of high importance to many who completed the survey, and was reflected in other forms of engagement.

Facebook comment:

"Extend the already awesome mtb trails. Look at Derby, Tasmania and Rotorua, NZ for fine examples of how to bring tourist dollars in."

The **inclusion of sportsgrounds** in Old Mans Valley was also relatively popular. Whilst only 19% of survey respondents selected 'Organised sport facilities/sportsground', many respondents who completed the 'other' open-ended response section, made comments requesting the inclusion of sports fields or courts.

Q. What kind of facilities would you like to see in Old Mans Valley? (Maximum 3 choices)



Survey:

"Mountain Bikers want to do the right thing and stick to legal trails. Making it easy to do so provides the opportunity for residents and visitors of all ages to enjoy a very popular sport safely and with the best interests of the environment in mind."

Submission:

"Perhaps there could be a Heritage Walk with plaques like the ones at Brooklyn, the plaques can explain the history of the area also Ginger Meggs was part of that area where he and his mates often use to go."

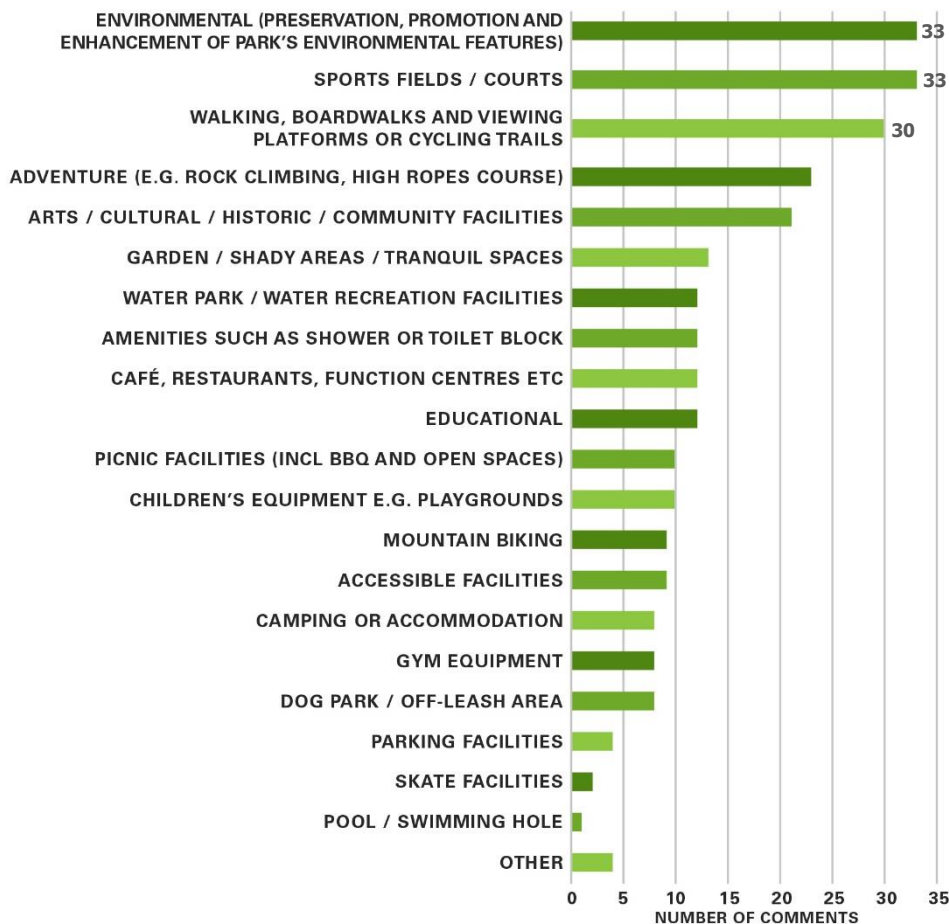
Submission:

"Create a 'Sensory' pathway, suitable for wheelchair access, and the less able in the community, a safe environment so that the feel of the bush, the odour of the eucalypts and flowers, may be appreciated by those less able to venture off on their own."

Old Mans Valley Free Text Box

A free text box was provided for respondents to leave any additional thoughts about Old Mans Valley.

The majority of respondents who left comments in the free text box suggested the **inclusion of sporting fields** in this area of the park. However, **no one kind of sporting field dominated** the responses.



Survey:

"This area should be the jewel in the crown for sports in the Hornsby district... This could be a fantastic sports ground for the next generation of Rugby's Wallabies, Australian Cricketers and Netballers and other district sports."

Stakeholder:

"Extending the trails would ensure this area was conducive to both mountain bikers and bushwalkers."



Old Mans Valley

2.4 Open text box

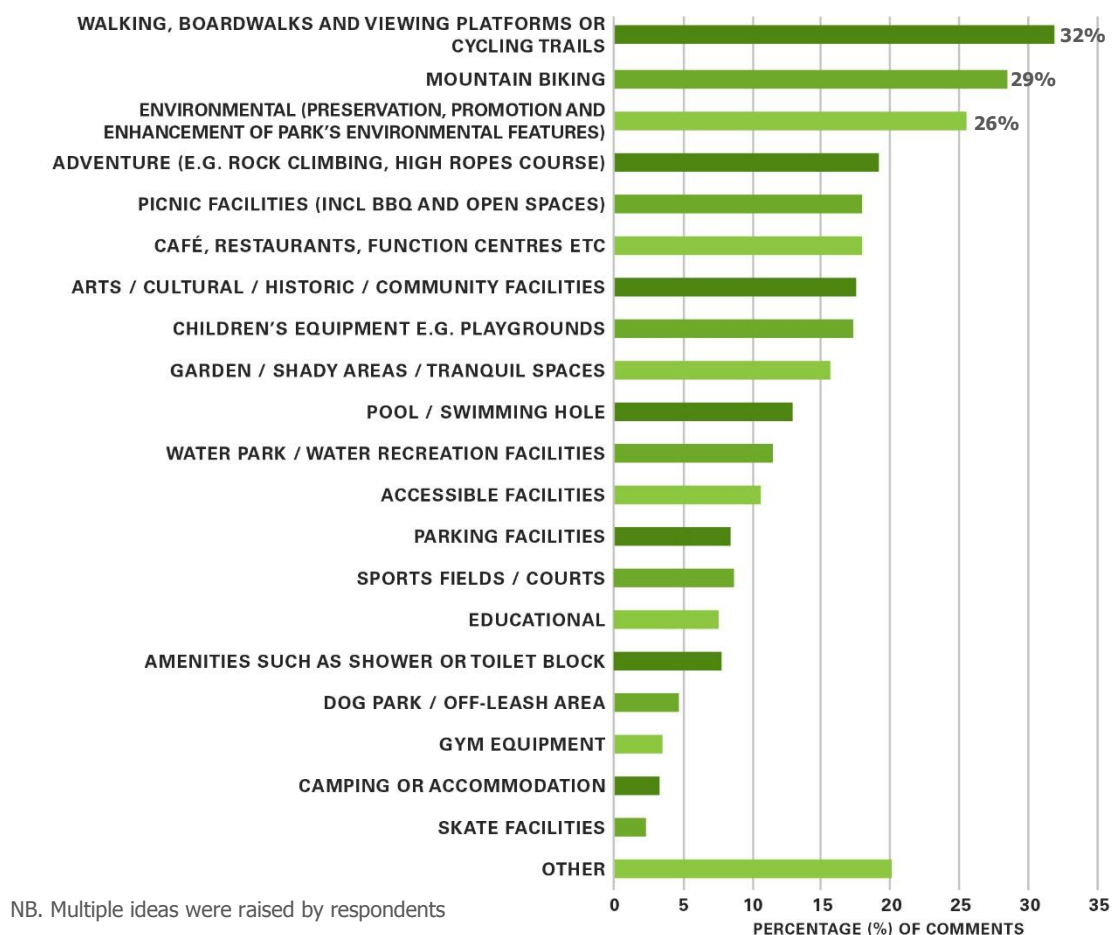
Embedded in the website to complement the closed question survey, this open text box allowed respondents to leave comments and upload any supporting documents or images. 784 people responded to this section. Comments were recorded and coded to provide robust data for interpretation and analysis.

The results of this section mirrored the results of the structured survey questions. Unstructured recreational pursuits such as **walking and cycling** (32%) and **environmental preservation/protection** (26%) were strongly represented. 29% of respondents also requested mountain biking facilities.

Facebook comment:

"Have a great flat picturesque circular walking track, so people can exercise, push prams. Toddlers can ride their trikes."

Q. Please tell us about any other ideas that you have about how we can transform Hornsby Park into a great recreational area for the community.



Examples of comments provided in the open text box

Environmental



"Swimming lake! Swimming lake! Swimming lake! The water is already there, it is excellent quality, it would be crazy not to have a swimming lake. The possibility of kayaking is very appealing too."

"I believe this setting, when combined with the broader bushland and National Parks surrounding Hornsby would lend itself to an outdoor adventure centre."

"It would be great to have an equivalent park like Centennial Park in the Hornsby Shire."

Community facilities



"It should provide a great place we can love and have pride in and cater to many diverse wishes."

"As a parent of young children there is a need for more community facilities for kids of all ages that inspire creativity."

"Activities that have synergy between them is key. Not one recreation should dominate. We should create something unique and not replicate other facilities in Sydney."

"An adventure playground, swimming area and cultural facilities would be such a great addition as it would give my whole family even more things to do in the area!"

"If we can all do our favourite activities in one place and have a picnic lunch at the end, we'd be there all the time!"

"Key themes should be open space, non-commercial spaces, multi-use spaces, places for community engagement & creativity, biodiversity."

"A park closer to home for my five kids of different ages and skill level would save us driving to all parts of the world to satisfy each child."

3 Email and written submissions

Over the six week consultation period, submissions were received via the 'Plan Your Parkland' dedicated email address, Hornsby Shire Council email address and by post. In total, 118 email and written submissions were received and analysed.

Similar to the survey results, **passive recreational activities** were popular choices amongst submission respondents. **Building trails for bush-walking, passive walking and cycling received overwhelming support from respondents** (46%). Some submission respondents made suggestions to keep cycling trails separate to walking trails. Providing **facilities that preserve and promote the historical features of the site was important to respondents**. Many suggested including educational facilities in the park to aid in understanding the site's historical and geo-historical significance. This view was also reflected in the stakeholder meetings, and survey responses.

Maintaining and enhancing the natural environmental features of the park, including **protecting and preserving the diatreame wall**, was important to a third of submission respondents. Many expressed in their responses that the park's unique features such as the **Blue Gum Forest and diatreame wall should be the major attractions of the park**.

Nearly half of the respondents (combining the number of suggestions for waterpark and swimming) were excited about the prospects of **water recreation activities and swimming to be located in the new park**. These suggestions included both active and passive recreation activities/facilities such as waterfalls or structures to appreciate water flows, canoeing and boating facilities, water slides and a natural swimming pool/lake.

Facebook comment:

"Waterfalls, water slides - high diving board - a water park oasis"

A fifth of respondents (which included a number of submissions from sporting groups) requested the inclusion of **organised sport grounds** such as an athletics track, a football field and cricket facilities.

Including facilities like cafes and restaurants, function centres, an amphitheatre and open spaces

to host events was important to 35% of people who made a submission.

Accessible facilities were important to respondents. Not only did they request for the park to be wheelchair-friendly, some made interesting suggestions such as including a sensory garden and pathway and a wheelchair swing.

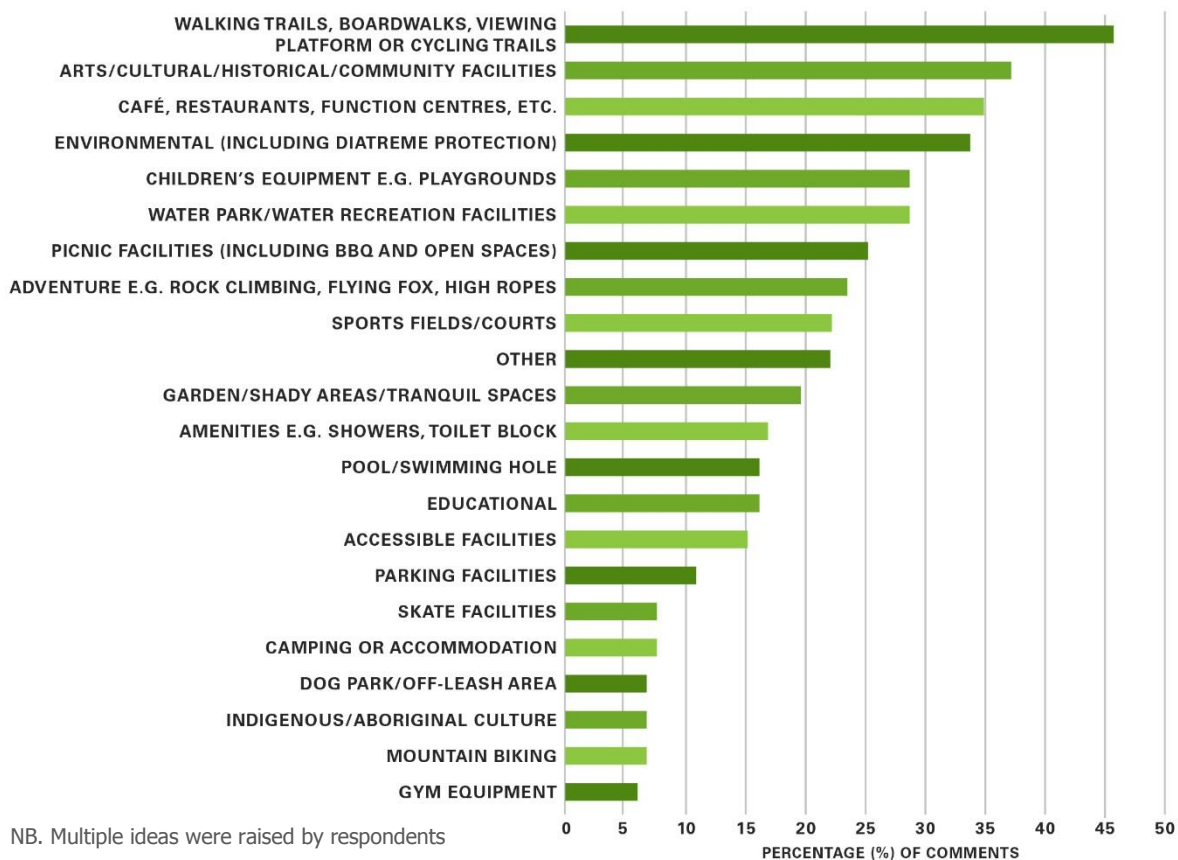
Promoting Indigenous and Aboriginal culture

was important to some respondents. Suggestions included a bush tucker educational garden and an educational garden for children to learn about local Aboriginal culture.

Facebook comment:

"Anything but a traditional park that we have hundreds of! Even a "Grounds of Alexandria" style eating, gardening area."

Ideas raised in submissions



Examples of 'other' responses:

- » wheelchair swing for wheelchair users
- » chairlift
- » swing bridge over the quarry
- » a slide for dumping shopping trolleys
- » a mixed residential and eco-park development
- » indoor training facility for cricket
- » signage throughout park
- » abseiling and vertical rescue skills training facility for SES
- » security e.g. external fencing
- » large water catchment for firefighting helicopters to re-fuel
- » considerations for external access to site
- » permaculture facilities
- » quiet places for yoga/meditation
- » outdoor classroom facilities
- » marine wildlife pool.

A year 3 class from a local school conducted a case study on the Hornsby Quarry as part of their classroom activities. Each student (25 in total) submitted their ideas for the new park in writing. The inclusion of children's play areas with a wide variety of activities (for both younger and older children) and adventure activity facilities (such as rock climbing) were popular ideas.

Suggestions from year three school students



"The first idea is a bush walking place. The reason I chose this place is because you wanted the nature to be the most important thing."

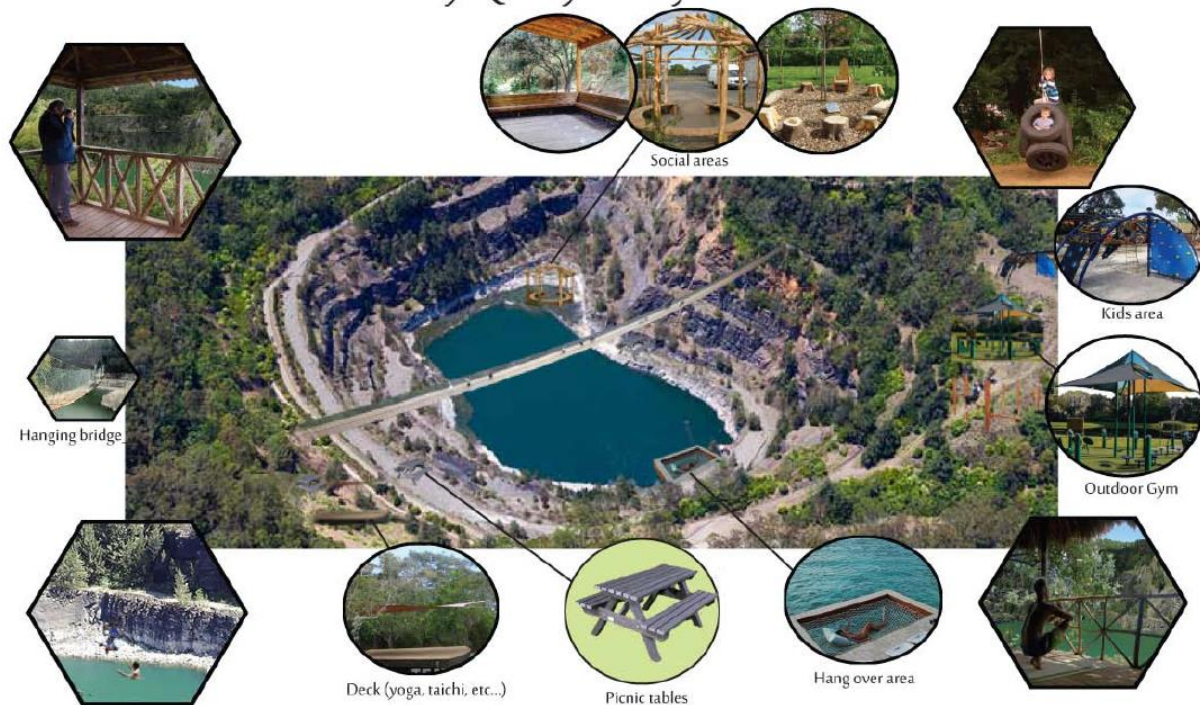
"A rock climbing place where people can climb and have fun! I think it is good to have a rock place because can also see the amazing rock and can learn all about history and what was in the park before it was made."

"I think bike tracks and skateboarding areas will be a great idea for older kids. This is known by the fact that me and my friends also like biking playdates."

"Community garden. We could use our community and make a huge garden. It will help more animals to find more homes, and earth worms make the soil richer and smoother and people can relax with a little cup of coffee and munch on a cookie."

Examples of park plan ideas submitted via email

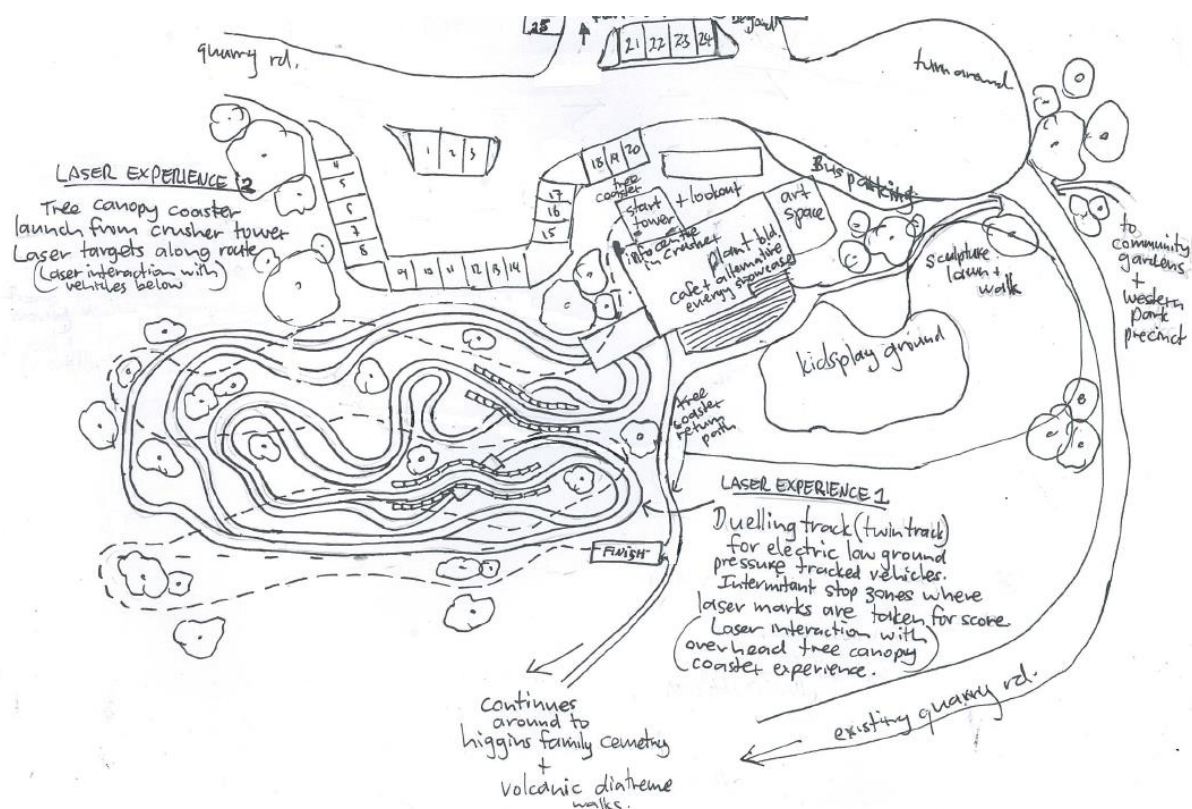
Hornsby Quarry Family Echo Park



My plan is to keep the quarry almost the same, with native plants, the water and make a place an Echo parkland for the whole community to exercise the soul and the body. While respect the environment. To obtain the result I would do:

- * Fix the way in a spiral that start in the top and finish down in the water, that keep the community active.
- * Build a hanging bridge to connect both sides, so people can walk and enjoy the view.
- * Build picnic tables with recycle plastic.

- * Build decks to do meditation, yoga, martial arts, etc..
- * Build an outdoor Gym with kids area for the whole family to exercise.
- * Create social areas to enjoy the place, that places can be use to make environment workshops.



Examples of comments provided in written and email submissions

Environmental

"The pictures of a natural landscape look amazing. I would love to be able to visit a park like that."

"I think that this is a very worthwhile project and hope that the area will really be a place that the natural bushland and the wildlife will be uppermost in all planning."

"As a grandmother I want forest type freedom to explore play areas where the kids from the concrete jungles can see birds and critters, climb trees and watch things grow. I want a playground that extends kids."

"This is a wonderful opportunity for Council to create a lovely, peaceful parkland where people can go to relax and socialise etc., especially with the huge development of units taking place within Hornsby, and would give families somewhere to actually relax in peace and quiet."

"The children of today will be our adults of the future and giving them a love of nature will hopefully see a difference to how they care for Hornsby community and bushland."

Community and educational facilities



"The chairlift across the Gorge is an excellent way to view the whole area."

"Helicopter replenishment area for fighting bushfires."

"Create a space that could also be used to host events such as moonlight cinemas, food truck events, Chinese New Year celebrations etc."

"I wish to propose few ideas that may be beneficial in planning: Darling harbour style kids recreation Centre in front of CBA office. Nice kids' water activities and sand area to play. Colourful led lights at night."

"Ten to twenty comfortable accommodation cabins set in the bush. They would need to be environmentally friendly so they blend in rather than be very obvious and would be occupied by people both locally and from distant places, even overseas."

"My suggestion is a swing bridge similar to the Capilano bridge in North Vancouver, BC. It was one of the attractions I wanted to see when visiting Vancouver. It could be erected across the quarry, as long as possible, and I think it would be a drawcard without affecting any other type of park activity."

"We would love a part of the parkland to be a sculpture park with permanent sculptures similar to the Yorkshire Sculpture Park."

"Accessible play equipment that engage those with physical and mental disabilities."

"We would also like to suggest that space be allocated in the Parkland for holding a regular Farmers' Market for the Hornsby Community."

"We believe the Hornsby Parkland quarry redevelopment is an ideal opportunity to establish a local abseiling and vertical rescue skills training facility for our SES unit. The training area we propose would be unobtrusive, safe and relatively inexpensive."

"An area could be set aside for the recreation of a bush hamlet that would have existed in the Hornsby area in the early 1800s. It would include authentic timber shacks, where locals lived, stores, reared children and be set on both sides of a rough bush road. Each building would provide examples of how people lived and worked in this remote area."

4 Community Deliberative Forum

The Community Deliberative Forum (CDF) was established prior to 'Plan Your Parkland' and holds a very important role in the overall consultation process. The primary objective is to anchor the engagement process in the opinions of the community, through a randomly selected membership that reflects the demographics of the Hornsby Shire LGA.

The importance of a randomly selected representative sample also helps to ensure that people not normally engaged by Council had a valued voice in the consultation process. Recruitment was conducted by Jetty Research, independent specialists in random telephone recruiting and surveying. Members were recruited by random telephone calls (using random verified numbers supplied by Sample Pages) and contacting individuals who have done research with Jetty in past. The criteria for recruitment was:

- » resident of Hornsby Shire (mix of suburbs)
- » age
- » gender
- » cultural background.

To recruit the 16 members, 354 calls were made.

The CDF members met four times throughout the consultation process. The details of the meetings are outlined below.

4.1 CDF 1

11 February 2017, 9AM – 12PM

Hornsby Shire Council Chambers

Attendance: 14 members, Hornsby Shire Council staff members plus representatives from Elton Consulting.

The purpose of the first CDF meeting was to:

- outline the context and history of the project,
- explain the role, scope, and objectives of CDF, and how members can contribute, and
- discuss the consultation process, including opportunities for CDF members to provide feedback and recommendations on how to improve it.

- » The importance of a broad and deep engagement process was discussed. Important elements of this engagement process include the key message that this park is community-owned and understanding the choices and decisions made about this site.
- » It was also raised that the CDF has the capacity to reach out into the community, which is far preferable to a self-selecting process. It allows Council to ask people what will work for them and their local community.
- » Initial suggestions about the park's future landforms were also discussed. Some suggestions made were:
 - > consideration for vehicle access and parking facilities throughout the park

- > the potential to utilise water as an attraction in the park
- > the inclusion of a museum to interpret the local history
- > the installation of a rock climbing wall on the Quarry's steep walls
- > an opportunity for schools to provide education centre facilities, allowing children to do field work on the site.

4.2 Quarry site tour

25 February 9am – 11am

Hornsby Park

Attendance 15 members, Hornsby Shire Council staff members plus a representative from Elton Consulting.

The purpose of the site tour of the Quarry was to provide a meaningful understanding of the site and see its environment in context.





4.3 CDF 2

4 April 2017, 6PM – 8PM

Hornsby Shire Council Chambers

Attendance: 12 members, Hornsby Shire Council staff members plus representatives from Elton Consulting.

The purpose of the second CDF meeting was to:

- conduct a high-level overview of engagement outcomes of 'Plan Your Parkland',
- discuss the high-level contents of the summary, and
- assess the submitted ideas.

- » To provide context, members were presented with the findings of the Active Living Hornsby Strategy that was prepared in 2015. It found that majority of the population growth in the Shire will occur in the Hornsby/Waitara/Asquith area. It also found that 82% of Shire open space is occupied by 'natural area': Council managed space (not national park), 18% of Shire open space is occupied by sportsgrounds and other developed parklands
- » Members found that results of submissions and surveys correlate with discussions at CDF meetings.
- » Members discussed that across all submissions and surveys, the preservation and protection of the site's natural amenities (flora/fauna and diatrema wall) was paramount.
- » Accessibility was also extensively discussed, especially in regards to vehicle access/parking and graded paths for easier access in and out of the Quarry void.
- » The members also discussed the possibility the Old Crusher Plant is retained as an important home for cultural/educational/historical facilities and how these facilities would attract different types of people to use the park in different ways.
- » It was noted by one CDF members that cultural diversity was not a strong theme. They discussed how open space is used by different cultures and as Hornsby's community diversifies, this should be a consideration in future planning.

4.4 CDF 3

3 June 2017, 9AM – 12PM

Hornsby Shire Council Chambers

Attendance: 13 members, Hornsby Shire Council staff members plus representatives from Elton Consulting.

The terms of reference and purpose of the third CDF meeting was to:

- review the consultation process and outcomes,
- review the draft consultation Outcomes report – CDF members provide feedback and recommendations on improvements,
- help Council choose which ideas to take forwards, and
- discuss ways for CDF members and Council to continue community engagement in the project.

Review of consultation process and outcomes:

The CDF unanimously supported the 'Plan Your Parkland' engagement activities and techniques. Comments were made about the remaining challenge for the general public to fully understand the terrain of the site, and for this to be a focus of future activities. The point was also made that future activities need to target children and young people as they will be key users of the park.

Review of draft consultation Outcomes report – CDF members provide feedback and recommendations on improvements

CDF members were pleased with the quality and content of the draft outcomes report. They suggested more images are incorporated to assist in increasing the general public's knowledge and understanding of the site.

Help Council choose which ideas to take forwards

Members participated in interactive sessions where they were given the opportunity to think about the site in terms of developing a landscape plan.

Former Quarry area/Quarry Void	
Members chose the activities identified from the 'Plan Your Parkland' surveys and submissions to take forward. Their selections were:	<ul style="list-style-type: none">» open-air amphitheatre» walking trails merging into viewing platforms» swimming lake and water recreation activities» picnic facilities» playground» adventure facilities» mountain bike trails» gym equipment» arts/cultural/historic/community facilities» tranquil/quiet spaces and gardens.
Members shared their thoughts about the purpose and experience that these ideas will provide:	<ul style="list-style-type: none">» The Quarry could become a 'destination' offering unique experiences and events, giving people a reason to visit.» An informal area with flexible spaces.» A place to experience water.» A family gathering area.» A place to appreciate the environment and history/heritage of the area.» A place of refuge and serenity to escape.
Members discussed the constraints and issues the Quarry void presents:	<ul style="list-style-type: none">» Accessibility into the void: the depth of void presents challenges regarding the gradient of walking paths in and out of the void.» Issues with a swimming lake: safety of swimmers, ongoing maintenance costs and site security.» Possibility that walking trails could become adopted as bike trails.» Conflict of uses: a space for events and organised activities vs a space of tranquillity and informality.

- » Noise from events could affect neighbours.

Photo taken at lake level from northern side, looking south west towards fill zone



Old Crusher Plant

Members chose the activities identified from the 'Plan Your Parkland' surveys and submissions to take forward. Their selections were:

- » café
- » function centre
- » art/historical/cultural/community/educational facilities
- » playground
- » rock climbing wall
- » boardwalks and viewing platforms.

Members shared their thoughts about the purpose and experience that these ideas will provide:

- » The adaptive re-use of the Crusher Plant as multi-use arts/community/educational facilities could also be representative of the heritage of the area.
- » The Crusher Plant could be the commercial area of the park: the proposed café could generate revenue for the park upkeep.
- » Focus on the history of the entire site, including the cemetery.
- » Serves as the gateway to the park.

Members discussed the constraints and issues the Crusher Plant presents:

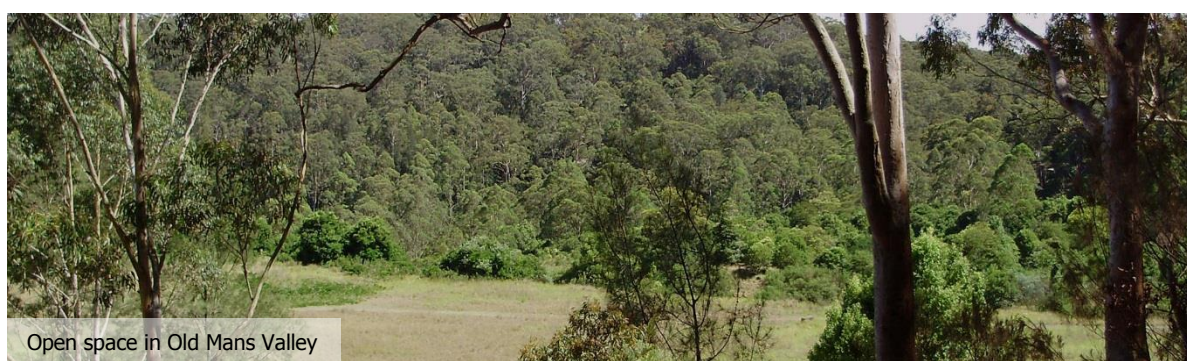
- » Financial support for commercial entities in the park.
- » Specific management models will be critical for each area of the park.
- » Investigate changing the land categorisation of a portion of the precinct from community use to operational to assist in funding the rehabilitation and construction of the park. However this would need to be carefully and clearly communicated to the community to avoid confusion.

Old Mans Valley

Members chose the activities identified from the 'Plan Your Parkland' surveys and submissions to

- » sportsground/sports facilities
- » mountain bike trails
- » walking trails
- » playground
- » picnic facilities

take forward. Their selections were:	<ul style="list-style-type: none"> » off-leash dog park » parking facilities.
Members shared their thoughts about the purpose and experience that these ideas will provide:	<ul style="list-style-type: none"> » Old Mans Valley could serve as the natural access point into the park and quarry, appropriate site to facilitate a carpark and other accessibility facilities. » A space for organised activities and sports, with integrated facilities and amenities to support these uses. » A formal and organised space for specific uses. » A practical space. » An integrated space to facilitate the different activities.
Members discussed the constraints and issues Old Mans Valley presents:	<ul style="list-style-type: none"> » Impacts on neighbours due to cars driving through and parking on residential streets – this could become especially problematic if the area had a sports field and regular games were held.



Discuss ways for CDF members and Council to continue community engagement in the project

- » All CDF members are eager to continue their involvement and expressed a desire to be involved during the Environmental Impact Statement (EIS) development process.
- » Future engagement with the park's neighbours and Shire's schools were identified as priorities for the next phase of engagement and consultation.
- » Members suggested that shopping centre pop up stalls or a shopfront in Hornsby could be useful techniques to disseminate key information at project milestones.
- » Community events are also an ideal opportunity to have a 'pop up stall' to communicate activities, milestones etc.
- » Notifications in Council rate notices could also be utilised as well as brochures and flyers and events at Hornsby library.
- » Hoardings across Shire could also be utilised to display information about the project and site in an interesting and original way. For example, key facts about the site could be promoted as a way of sparking people's curiosity.
- » CDF members suggested that Council should investigate if a part of the site or a viewing platform could be opened to allow visitors.

- » All members felt that understanding the size and scale of the park, in particular the depth of the quarry, is a challenge for people who have never visited the site. All agreed that future engagement collateral and activities should assist in 'painting a picture' of the site. It was suggested to relate the park to other sites, for example, the diatreme wall is the same height as the Sydney Tower.

4.5 Overall comments and recommendations for the park and continuing community consultation

The CDF served an important purpose for 'Plan Your Parkland' by anchoring the consultation in the views of the community. The CDF members had the opportunity to visit the site which gave them a deeper understanding of the opportunities and constraints, and were also able to reflect on and analyse the submissions. The key directions the CDF recommend to Council are:

- » CDF members should serve as a 'sounding board' during the EIS drafting phase to test ideas and raise any issues likely to come from community members.
- » CDF members should provide input into the consultation materials and engagement activities when the EIS goes on public exhibition.
- » The CDF appreciates that one of the primary challenges of the park will be balancing the uses and negotiating these potential conflicts. The CDF recommends that work is needed to manage conflicts of uses and experiences during the design and developmental phases.
- » Investigate changing the land categorisation of parts of the park from community use to operational to enable certain uses such as long term leases to private operators. This would assist in funding the rehabilitation and construction of the park. However, this would need to be carefully and clearly communicated to the community to avoid confusion.
- » The adaptive re-use of the Crusher Plant was broadly supported by the CDF. They recognised that the precinct could serve as an important access point into the park.
- » The potential regional/state significance of park should be more clearly identified to increase funding options.
- » High levels of access to all areas of the park should be ensured. This also includes well-designed pathways and access points for people with mobility issues.
- » Engagement with key park stakeholders should be continued and expanded upon. Additional stakeholder groups that were identified were school students and neighbours surrounding the park.

5 Stakeholder meetings

5.1 Stakeholder meeting with representatives of the bushwalking and environmental community

28 February 2017

Key points raised by stakeholders:

- » The importance of preserving indigenous vegetation in the area, particularly the Critically Endangered Ecological Communities (EEC) such as the Blue Gum Diatreme Forest.
- » Capitalise on the opportunity to educate the local residents and visitors population about the local area's unique natural environment.
- » Developing a variety of walking and bushwalking trails (paved and un-paved and differing lengths) to suit everyone – including people with mobility issues and through to experienced bushwalkers.
- » The new park should include a variety of passive and active recreation activities e.g. picnic areas, tranquil areas and informal parkland. These use areas however, need to be placed in appropriate locations across the site to ensure that there remain areas of tranquillity, and that the natural environment is not spoilt. It is important to ensure that the most is made of on-site areas that have already been disturbed and that EEC areas are not impacted.

29 May 2017

A summary of what Council has heard through the engagement process was presented to the Stakeholder Group

5.2 Stakeholder meeting with representatives of the mountain biking community

2 March 2017

Key points raised by stakeholders:

- » Developing a 'Ride Centre' which provides facilities and a variety of experiences that can be enjoyed by beginners to advanced riders in the park
- » Appropriate car parking that balances the needs to access the wider park but doesn't intrude into the natural setting of the park.
- » Mountain biking is complementary to many other outdoor activities including bushwalking, and adventure activities.
- » Proposal to develop broad, regional connections across Sydney by linking with adjoining trails beyond the site to the Northern beaches and to much of the North-West and beyond including the Westleigh site recently acquired by Council and other areas to the west of Hornsby.

30 May 2017

A summary of what Council has heard through the engagement process was presented to the Stakeholder Group

5.3 Presentation at Hornsby Shire Heritage Advisory Committee Meeting

7 March 2017

Key points raised by the Committee:

- » Identify on the mapping plans/documentation the Higgins Family Cemetery within Old Mans Valley (which is heritage listed with State Significance) and the locally significant Hornsby Park to ensure that the community is aware of the heritage items within and in the vicinity of the park.
- » That Council investigate the preparation of a Conservation Management Plan (CMP) for the heritage items identified in the park.
- » A competition for architectural and landscape designs for the park.

5.4 Stakeholder meeting with representatives of the Hornsby Chamber of Commerce

3 April 2017

Key points raised by stakeholders:

- » The park should include an easy-to-access multi-function space for the local business community in the old Crusher Plant. The space could be used for meetings, workshops, community functions and educational purposes.
- » The multi-function space can also be used by businesses and groups across Sydney to host events and retreats in Hornsby. To support this, the park should also include some form of accommodation that visiting groups and businesses could use for a two or three-day retreat.
- » Hornsby's local business, artistic and cultural communities should be involved in the engagement process to find out what their wants and needs for the park are. Also, local businesses should be given priority for tenders and business opportunities for the development of the park. This also extends to any artistic elements of the park, including sculptures or murals.

15 June 2017

A summary of what Council has heard through the engagement process was presented at the Chamber of Commerce's monthly meeting.

5.5 Hornsby Aboriginal and Torres Strait Islander Consultative Committee meeting.

Also attended by Hornsby Area Residents for Reconciliation (HARR)

Key points raised:

- » HATSICC strongly expressed the need for the preparation of another Statement of Aboriginal Significance for the lands as part of the preparation of the EIS
- » Requested 'appropriate channels of liaison are followed' to ensure this reporting is well done and the right organisations and individuals are consulted.
- » Support was expressed for the multi-use prospects for the site and enthusiasm for Council progressing the works.
- » HATSICC are enthusiastic about engagements that could improve environmental restoration and Aboriginal recognition in association with these and the surrounding lands, of which the Darug and Guringai people remain the Traditional Custodians.

5.6 Sportsground users as stakeholders

Council has elected to separately engage with sportsground user groups through a Sportsground Discussion paper that is expected to be released in June 2017. This discussion paper considers the issues associated with sportsground use across the shire and identifies a sportsground in Old Mans Valley as a future development, consistent with the Plan of Management for Hornsby Park.

Submissions were received from some sporting groups and all members of the community were invited to participate in the engagement activities.

6 Community Information and Feedback sessions

Two community information and feedback sessions were held on 18 & 20 May in Hornsby Mall. The purpose of these sessions was to present, report and feed back to the community suggestions that were made during 'Park Your Parkland'. It was an important opportunity to 'close the communication loop' and provide those interested with an understanding of the community's aspirations and priorities for the future of this site. Over the two days, we spoke to approximately 600 community members.



A summary of the ideas and suggestions raised during 'Plan Your Parkland' were displayed on A0 display boards (included in appendix A-3). Community members were invited to view the boards and ask any questions or raise any comments.

Sentiment snapshot:

- » People were very happy Council took the time to 'report back' to the community in a highly visible area.
- » Many people who participated in the engagement process also attended.
- » There was a very high satisfaction in the results. People who didn't participate in the survey were anecdotally saying they agreed with the results.
- » One of the most common themes was a general agreement that nature should provide the backdrop and setting for leisurely and more active recreational pursuits.
- » Many people would like to see the Crusher Plant adapted for reuse as a café or community use.
- » Many people supported the incorporation of a sportsground in the Old Mans Valley area.

- » People were also very happy to see the popularity of some form of water based activities in the quarry.
- » There was a general consensus that this will be a unique and highly prized destination.
- » There was general enthusiasm and excitement about Council's commitment to consult with the community over the life of the project.
- » People were supportive of re-using the NorthConnex material for the purpose of creating open space.
- » There was general excitement for the children of the future being able to use this space as their backyard, nature retreat and bike riding area.

7 Recommendations

7.1 Findings of the engagement

From our engagement with the community and CDF members, we heard the following suggestions about the park's precincts:

- » Former Quarry Area/Quarry Void
 - > The precinct should become a unique 'destination', drawing in visitors to the park.
 - > Suggestions to utilise the natural form of the quarry void to build an outdoor amphitheatre.
 - > The precinct should be informal with flexible spaces.
 - > The precinct should allow for structured and unstructured activities like outdoor events held in the amphitheatre and picnics.
 - > The precinct should be a place to appreciate the environment and history/heritage of the park.
- » Old Crusher Plant
 - > There was strong support for the adaptive re-use of the Crusher Plant buildings as multi-use facilities.
 - > The precinct should be the commercial area of the park and house a café, restaurant and other arts, community and educational facilities.
 - > It should serve as the natural entry point into the park.
- » Old Mans Valley
 - > The precinct should support a sportsground or sports field and be a space for organised activities and sports.
 - > The precinct should be integrated with facilities and amenities to support the sportsground/sports field.
 - > Current mountain biking facilities should be built upon and extended in the precinct.

7.2 Ongoing engagement

These recommendations will help maintain the level of community support for the long-term planning of the park and are in the best interest of the success of the planning and development process.

Short-term recommendations:

- » Community Deliberative Forum – two extra meetings
 - > Meeting #1: provide insight into the community and help identify and provide advice on:
 - key environmental issues to be addressed/assessed that have been identified through the consultation activities
 - any other issues not already being assessed from the Secretary's Environmental Assessment Requirements (SEARs)

- feedback on communication materials and community engagement activities to be implemented during the EIS assessment process.
- > Meeting #2: provide advice on future engagement activities:
 - assist Council in providing a solution to the opportunities outlined during the EIS process
 - preview the draft EIS and raise any issues likely to be raised by the community
 - provide advice on engagement activities to be undertaken during EIS exhibition.

Medium to long-term recommendations:

- » Council undertakes engagement at a minimum of 6 monthly intervals to ensure that the community feels well informed about the site's progress. This also provides Council with the ability to continue to educate the community regarding the site's opportunities, constraints and plans for park development.

APPENDICES

A-1 Survey

Hornsby Park Consultation Feb 2017

We welcome your ideas. Please complete this survey - one response per person.

What is your gender?

☐ Male ☐ Female

Which age group do you belong to?

☐ under 18 ☐ 26-35 ☐ 46-55
☐ 18-25 ☐ 36-45 ☐ 56+

Are you a Hornsby Local Government Area resident?

☐ Yes ☐ No

* Please enter your postcode

We have identified three key areas of the site that will be transformed into parkland. What kind of facilities would you like to see in each of these areas?

The Quarry Void

* What kind of facilities would you like to see in the former Quarry area of the Park? (You may select up to 5 choices).

- ☐ Walking trails
- ☐ Mountain bike trails
- ☐ Playground
- ☐ Boardwalks and viewing platforms
- ☐ Adventure recreation facilities
- ☐ Picnic facilities
- ☐ Open-air amphitheatre
- ☐ Swimming lake
- ☐ None of the Above
- ☐ Other (please specify)

Old Mans Valley

* What kind of facilities would you like to see in the Old Mans Valley? (You may select up to 3 choices)

- ☐ Mountain bike trails
- ☐ Walking trails
- ☐ Picnic areas
- ☐ Off-leash dog exercise areas
- ☐ Organised sport facilities/sportsground
- ☐ Playground
- ☐ None of the Above
- ☐ Other (please specify)

The Crusher Plant

* What kind of activities would you like to see at the old Crusher plant in the Park? (You may select up to 3 choices)

- ☐ Walking trails
- ☐ Playground
- ☐ Information, art and community space
- ☐ Boardwalks and viewing platforms
- ☐ Café
- ☐ None of the Above
- ☐ Other (please specify)

Your Ideas

Please tell us about any other ideas that you have about how we can transform Hornsby Park into a great recreational area for the community.

File Upload

Please upload any files that will help illustrate your idea, ie. photos or drawings. You may upload up to 5 files.

File number 1

Choose File

No file chosen

File number 2

Choose File

No file chosen

File number 3

Choose File

No file chosen

File number 4

Choose File

No file chosen

File number 5

Choose File

No file chosen

Your Details

* We would like to keep you informed of updates of the Hornsby Park development. Please provide us with your name and email address.

First name

Last name

Email

A-2 High level summaries of stakeholder meetings

Plan Your Parkland Stakeholder Meeting

28 February, 2017

6pm – 7pm

Hornsby Council Chambers

Key Points raised by stakeholders representing a cross section of the LGA's Bushwalkers, Environment Groups and Bush Care volunteers

- Attendees stressed the importance of preserving indigenous vegetation in the area, such as the Blue Gum Forest and sassafras, and introducing the local population to the local environment.
- Creating connections with bushland in areas outside the Hornsby Parkland, e.g. a historical walk to the Berowra area was discussed and supported. There are numerous natural tracks linking Hornsby Parkland to other surrounding bushland areas that require formalisation, regeneration, rerouting, landscaping and the clearance of weeds.
- These trails (and any other trails or attractions) would be improved by the addition of interpretative signs. This would increase awareness of the site's historical significance.
- It is important not to have isolated walking trails, but interconnected tracks that vary in length and difficulty.
- Longer walking networks that can be accessed by everyone would be welcomed by the bushwalking community.
- Longer walks tend to be more difficult. The attendees, however, believed that longer walks of greater ease (Grades 1 and 2) were important for getting people out in the bush and developing a love for the environment. There should be challenging walks for serious bushwalkers but also trails designed for long 'strolls'.
- The diatrema was seen as the central attraction of the parkland, visually, geologically, environmentally and historically. It is unique not only in Sydney and Australia but across the globe. Ensuring the diatrema receives sufficient protection was considered crucial for any parkland plans. Some important considerations for attendees included: ensuring the diatrema receives a state heritage listing and the void is not overfilled, such that the diatrema is obscured or damaged.
- Discouraging cars in the area to retain the natural, wilderness feeling of the parkland, to avoid congestion and minimise pollution.
- Inclusiveness was considered as very important by all attendees. This means creating walking trails that are accessible for wheelchairs and people with prams.
- It was stressed that this does not mean that all tracks should be turned into concrete pavements. This inclusiveness should also extend to sense based disabilities, such as autism, blindness and deafness. The park should be designed such that Hornsby's beautiful bushland can be accessed and enjoyed by everyone, through initiatives such as touch and feel programs.
- Attendees stressed the historical significance of the area, and the need to recognise and celebrate this history. Installing signs with photos, maps and descriptions of the site's history was widely supported.
- The importance of creating a park that was environmentally and financially sustainable was discussed.
- This would not only help in preserving the natural environment but also save Council, and local ratepayers, a great deal of money.
- Many attendees believed it was important that mountain bike and walking trails were separated.
- The need for direct access for walkers and bikers between the Hornsby CBD and train station and the parkland.
- It was suggested that there is a need to keep the quiet serenity of the parkland and this could be achieved by planning an elevated railway or pathway linking the high parts of the site and accessible for many people. This idea could help to allow many people to appreciate the site without 'buggering' it up.

- There was a request for ordinary biking riding facilities at the parkland, not simply mountain biking trails. This could be supported by adding a rent-a-bike station, with some attendees suggesting this could be built at Hornsby Station.
- The role of what commercial facilities should have in the area was discussed. The Crusher Plant was seen as a good location for a kiosk.
- A balance needs to be found between not over-monetising the area with shops and flashing lights but also supporting visitors with sufficient locations for buying food and drinks.
- Attendees envisaged the park as a location where families can spend a nice day out together, without having to spend a significant amount of money.
- The need for both passive and active recreation across the parkland was considered very important. One suggestion was the need for a good picnic area, as there was limited space across Hornsby for these sorts of passive activities. It was suggested that a picnic area overlooking the diatrema would be particularly beautiful.
- There were differing ideas about how the water hole in the quarry could best be used. It was suggested that it could be used for on-water activities, like boating facilities and water play areas. A separate suggestion was to stock the water with native fish.
- Using the water for education purposes was largely supported, with suggestions that there could be water ponds in the existing water courses for various conservation and educational purposes.
- Careful management of water levels was also considered important to some attendees.
- A desire for a children's playground, but "not plastic dropped from an alien ship". It should reflect the natural environment of the area and utilise natural shading.
- Attendees were generally supportive of opening the park to dogs in designated areas.
- There was a suggestion of a skate park, as this is something Hornsby currently lacks.
- Attendees agreed that the site could be open to multiple uses but they need to be placed in appropriate locations across the site. This will ensure that there remain areas of tranquillity, the community does not overly intrude on the natural environment and we make the most of on-site areas that have already been disturbed.

Plan Your Parkland Stakeholder Meeting

2 March, 2017 6pm – 7pm

Hornsby Council Chambers

Key Points raised by Stakeholders representing the Mountain Bike Community

- Mountain biking is complementary to many other outdoor activities including bushwalking, and adventure activities.
- Mountain biking facilitates an appreciation and love of nature, through an experiential pursuit in bushland settings.
- There was consensus that the key to the success of the Hornsby trails would be connecting them with surrounding trails around Sydney.
- Various attendees had put together an economic study that treated tracks from the Northern beaches to Hornsby and to much of the North-West and beyond as a connected mountain bike trail. This study would be part of the submission that is made to the engagement process, and was not tabled at the meeting. Many of these links and tracks already exist, either officially or unofficially, and by shoring up these tracks into a connected trail it aims to avoid any further environmental disturbance and provide more experiences.
- Hornsby Parkland was seen by the attendees as a good starting point for this connected trail, particularly with its proximity to the station and Hornsby CBD, but also a good destination, where riders could meet up with family and friends and use the Parkland's other facilities. It is a "hub", a "regional trackhead" and a "start point and / or gateway for Northern Sydney".
- Connections were discussed with various locations including: Westleigh (perhaps via a suspension bridge), Narrabeen Lagoon, Ginger Meggs Park, Pennant Hills, Cheltenham, Lane Cove and the Northern Beaches amongst many others.
- If these various connections were utilised and formalised it would provide for a trail length of 30km +
- Diversity of both style and length of trails was discussed. The community raised the desire for cross-country loops, a downhill trail that utilises the full vertical elevation of the area (discussions were had about gravity flows, and the track at Knapsack Reserve was identified as an exemplary example of a downhill trail), dirt jumps / tricks areas, as well as beginner, intermediate and advanced trails for each of these different styles. Encouraging beginner-level access to mountain biking was emphasised. With these combined features, the site could achieve the status of 'Ride Centre'.
- The attendees discussed the appeal of the trails going through and/or passing alongside natural wilderness areas, particularly the Blue Gum forests through clever design to ensure its protection. The Councillors in attendance reiterated the difficulty of having trails pass through EEC areas, and perhaps it being inappropriate if the protection of EEC was not guaranteed, as protecting EEC is of paramount importance. There was consensus in the room of the importance of protecting the natural environment.
- Multi-use trails / paths, particularly in connecting areas, allows for bushwalkers, vehicles and mountain bikers to use the same trails.
- There was a common concern that Hornsby Parkland should not be dominated by cars.
- Parking was still considered to be an important factor for many attendees, particularly near green (beginner) mountain biking trails, for ease of access and at the end of long trails.
- Other transport suggestions included the use of chair lifts or a shuttle bus, which could be a good source of revenue for the Council.

- The proximity of the site to the railway was considered very important for non-drivers and young people who wish to access the bike trails.
- The Crusher Plant was identified as a potential location for a Hornsby recreational and cultural club. This could be a social hub for the area, and could include cafés, leasable property, an arts studio and sports clubs.
- Rock climbing – there was support for both a natural rock climbing wall on one of the quarry faces but also man-made rock climbing facilities either indoor or outdoor.
- Fitness facilities could be appropriate at Old Mans Valley.
- Ziplines and high ropes courses could be a suitable attraction, particularly if one or two ziplines could go over the quarry void.
- Areas for families to visit and bring their dogs are needed. This could also include a child's bike path.
- Important to also pick up on other site characteristics and features, such as mining history, early settler, radio astronomy, etc.
- It was suggested that if a sportsground were included in this location it should be designed in a manner that opens it up to multiple uses. The sports field at Glenbrook Park was suggested as an exemplar. This field includes a track around the park where bike riding can occur, surrounding play equipment, picnic areas, etc. By integrating the sportsground with other uses Council could still support many forms of recreation and activity.

Plan Your Parkland Stakeholder Meeting
Hornsby Shire Council
3 April, 2017

Key Points raised by attendees representing Hornsby Chamber of Commerce:

- » The park should include a meeting space for the business community. Some key components that were identified as important for this space were:
 - > It should be conceived of as a cheap, easy-to-access space for local businesses.
 - > Businesses can book out the space for staff retreats, meetings, workshops, training sessions, presentations from local consultants, etc.
 - > Should include a large room, but it does not need to be any bigger than a community centre.
 - > The space should include moveable partitions to split up the room and make it suitable for multiple uses and/or groups at the same time.
 - > There should be a breakout room with full AV facilities.
 - > It should be a flexible and adaptable space that can serve multiple purposes. This means the space should not be set up like a board room. In addition to the business community, a multi-use space could accommodate various community functions and groups, e.g. a performing studio, an arts studio, yoga classes, educational purposes, etc.
 - > Although the space should be primarily for the benefit of the local community, a well-designed space could attract businesses and groups from across Sydney and beyond to host events and retreats in Hornsby. Currently there are no spaces like this between Chatswood and the Central Coast, and so this sort of space would be a good source of revenue and could transform this location into a real business hub. To support this, the park should also include some form of accommodation that visiting groups and businesses could use for a two or three-day retreat.
 - > To be a self-sufficient complex there should be a café / restaurant, but also a large kitchen that can be used by catering companies.
 - > The space should not be seen as a means of profiting off local businesses. Booking / renting the facility should be discounted for first year businesses that are registered in the Hornsby area.
 - > Ensure that there is appropriate facilities and infrastructure to support the business community. This includes Wi-Fi access (could be pay-per-use), the necessary infrastructure for NBN, a pull down projector screen for presentations (as seen in Gordon Library), etc.
 - > It was suggested that the Old Crusher Plant may be a good location for this space. This space is not constrained by geography and has beautiful views.
- » Other features and facilities attendees believed were important in the park:
 - > Ensure the park is accessible for people of all ages and abilities.
 - > Multiple cafés and restaurants across the park.
 - > Centennial Park is a good example of what the Hornsby Parkland could resemble, with features such as bike rental facilities.
 - > The park should be open to various recreational activities, with lots of open green spaces.
 - > Educational spaces.
 - > A balance needs to be struck between parking and open green areas. To avoid congestion from too many parked cars, there should be buses, loading zones and various transport options.
 - > Involve the National Park in environmental / historical tours around the parkland.
 - > Green picnic areas, including barbecue facilities. These green spaces could be used for events such as wedding receptions. For this to occur they need to be in aesthetically appealing locations within the

park. Private groups that book out these spaces could then pay for their clean-up and upkeep, raising revenue for the park and saving on upkeep costs.

- > Adventure recreation facilities. These sorts of facilities are increasingly being used by corporate groups for team-building exercises, training purposes, etc. and would be a great companion to the proposed business space.
- > If all these facilities are all properly utilised then the park could be financially self-sufficient and could eventually pay for its own existence.
- » Keep things local:
 - > Local businesses should be offered advertisement opportunities in the park through initiatives such as digital boards and on the back of tickets / receipts.
 - > For designing the park, tenders, business opportunities, etc. local businesses should be given priority and should be offered and considered first. This also extends to any artistic elements of the park, including sculptures or murals. These should be designed and created by local artists. This will help engender a sense of community ownership for the parkland.
 - > Including Hornsby's local business, artistic and cultural communities in the engagement process, and finding out what their wants and needs for Hornsby Park are.

A-3 A0 display boards

HORNSBY PARK

From quarry to park...the beginning of a new story



Only a short walk away from Hornsby station, Hornsby Quarry has been hidden behind barbed wire for much of the last century. In 2002 Hornsby Shire Council purchased the quarry. Council plans to transform Hornsby Park into a destination that is owned, designed, used and loved by the community.



Stage 1
NorthConnex filling

Stage 2
Rehab works

Stage 3
Parkland development

2023
Park Opening



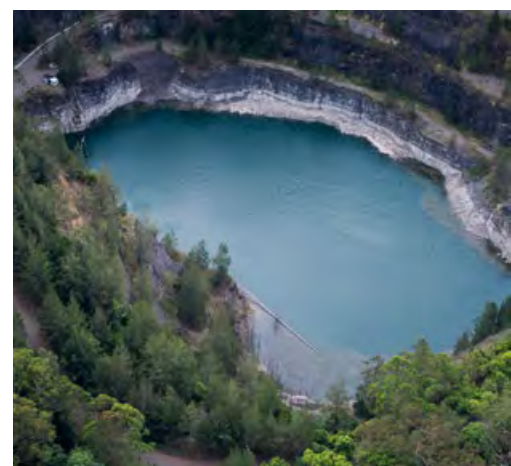
Quarry Crusher Plant

Abandoned buildings that once processed material extracted from the quarry site are located on a flat area at the end of Quarry Road.



Old Mans Valley

Old Mans Valley sits in a well-defined natural valley between Hornsby Quarry and Peats Ferry Road.

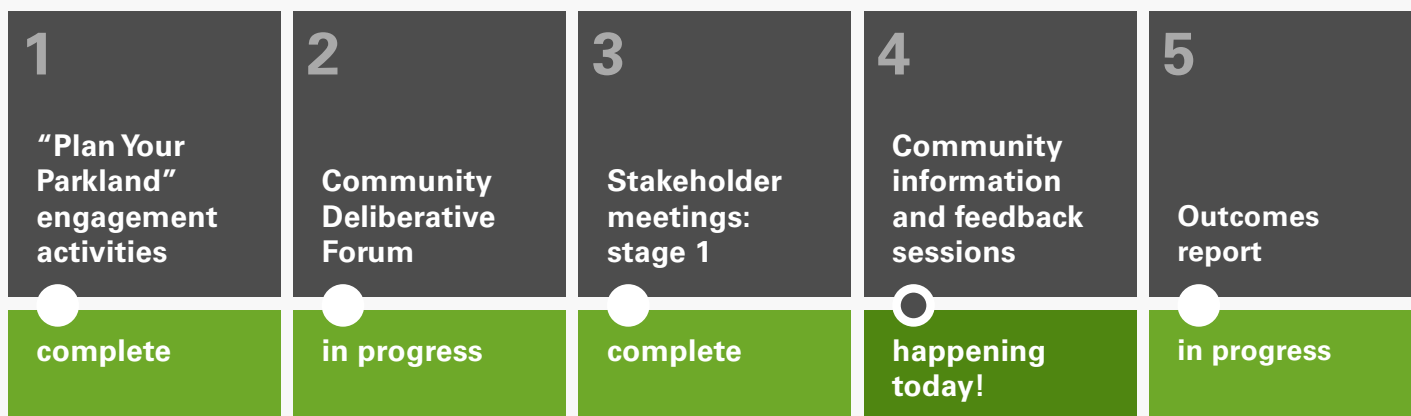


Quarry void

Featuring dramatic level changes, exposed rock walls and an open water body, the quarry void is the centrepiece of the parklands.

ENGAGEMENT PROGRAM

Council will be engaging with the community on a regular basis until the new Parkland is opened to the public, which is expected to be around 2023.



Next Steps



A huge thanks to all of you who have taken the time to complete a survey, email, write, or even send us through a photo.



FEEDBACK SUMMARY



1236

surveys received
and analysed



74%

of survey
respondents were
Hornsby Shire
residents



118

written and email
submissions
received and
analysed



16

members of
the Community
Deliberative
Forum



12

advertisements
in six local
and shire-wide
newspapers



17

facebook and
Instagram posts



8

email blasts
sent to Council
database

From our engagement with the community, the images below represent the most popular suggestions for the park:



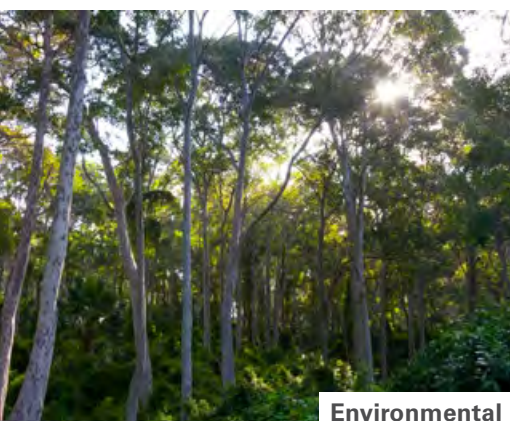
Walking tracks



Picnic areas and open spaces



Mountain biking



Environmental



Cafés / restaurants



Arts / community / historical facilities

QUARRY VOID

Popular suggestions:

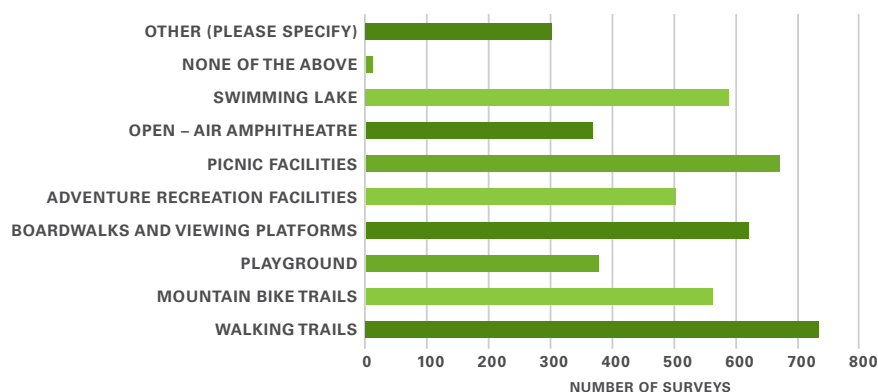
- » Walking trails
- » Boardwalks and viewing platforms
- » Picnic facilities
- » Environmental preservation, promotion and enhancement, particularly the diatreme wall
- » Swimming and/or water recreation facilities



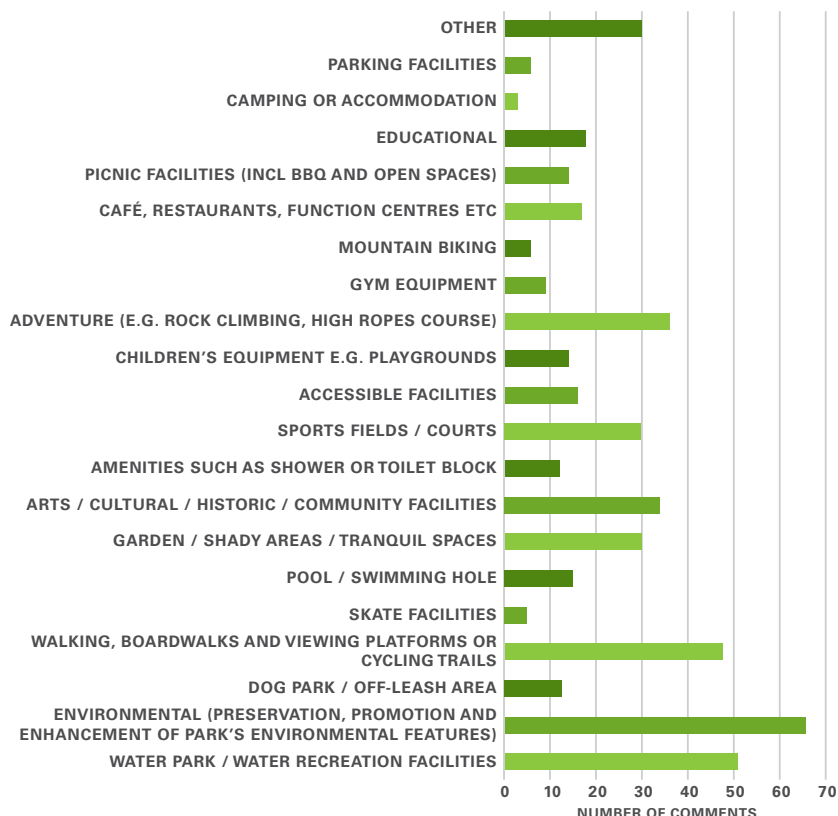
A large percentage of survey respondents indicated their aspirations for the quarry area to allow visitors to view and experience the natural environment. Almost 60% of respondents selected walking trails and 50% of respondents selected boardwalks and viewing platforms. This preference was also reflected in the stakeholder meetings and written submissions.

Survey Question

Q. What kind of facilities would you like to see in the former Quarry area of the Park? (Maximum 5 choices)



Following the survey, a free text box was provided for respondents to leave any additional thoughts about the former quarry area.



Results were consistent with the closed survey questions. Walking and cycling trails, viewing platforms and water recreation facilities were suggested. The majority of respondents strongly advocated for the preservation, promotion and enhancement of the environmental aspects of the park, particularly the protection of the diatreme wall.

QUARRY VOID

Suggestions raised in written and email submissions:

- » Accessible trails for wheelchairs
- » Educational facilities about diatrema wall
- » Utilising quarry water for swimming and other water-based activities
- » Natural amphitheatre

“Longer, interconnected trails moving through the former quarry area would cater to walkers of all levels and experience.”

– Stakeholder

“There needs to be linkages for wildlife corridors and also established bike/walking tracks.”

– Survey

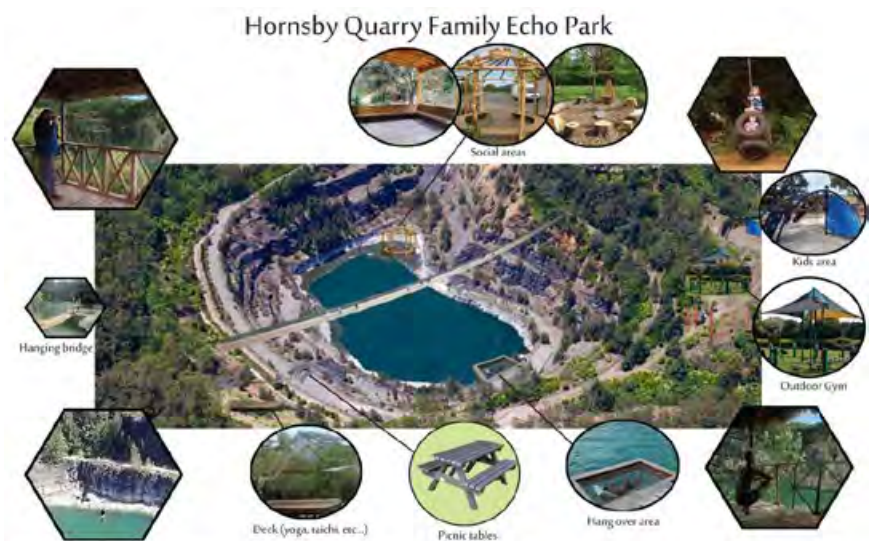
“This is what unstructured recreation is all about: the freedom to circulate in nature by whatever non-motorised means one chooses. I urge Hornsby Council to make this park a hub for unstructured recreation.”

– Survey

Don Do Student Design



Community member submission



“This is a wonderful opportunity for Hornsby to become an eco-tourist destination providing a combination of natural wild life, entertainment and healthy lifestyle in a bush setting that is safe for all ages and ecologically sound.”

– Submissions

“The east face [of the diatrema] is probably the finest example in the country.”

– Submissions

“The water could be used for water activities such as water polo, canoe polo and pontoons would facilitate a stage for theatre, open air concerts such as Opera in the Quarry.”

- Submissions

OLD MANS VALLEY

Popular suggestions:

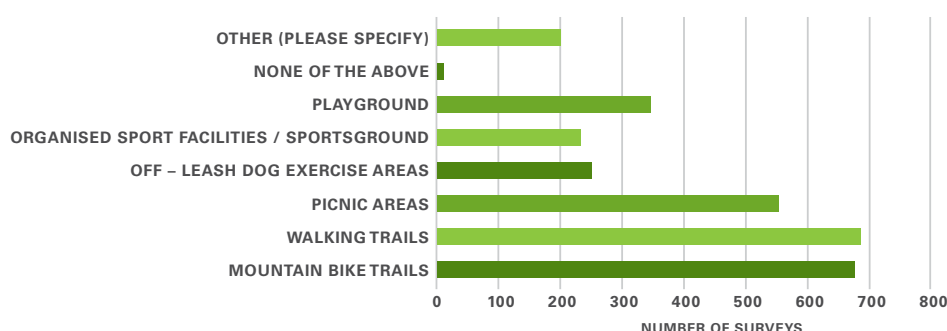
- » Walking trails & mountain bike trails
- » Environmental preservation, promotion and enhancement
- » Sports fields
- » Adventure recreation facilities
- » Picnic areas



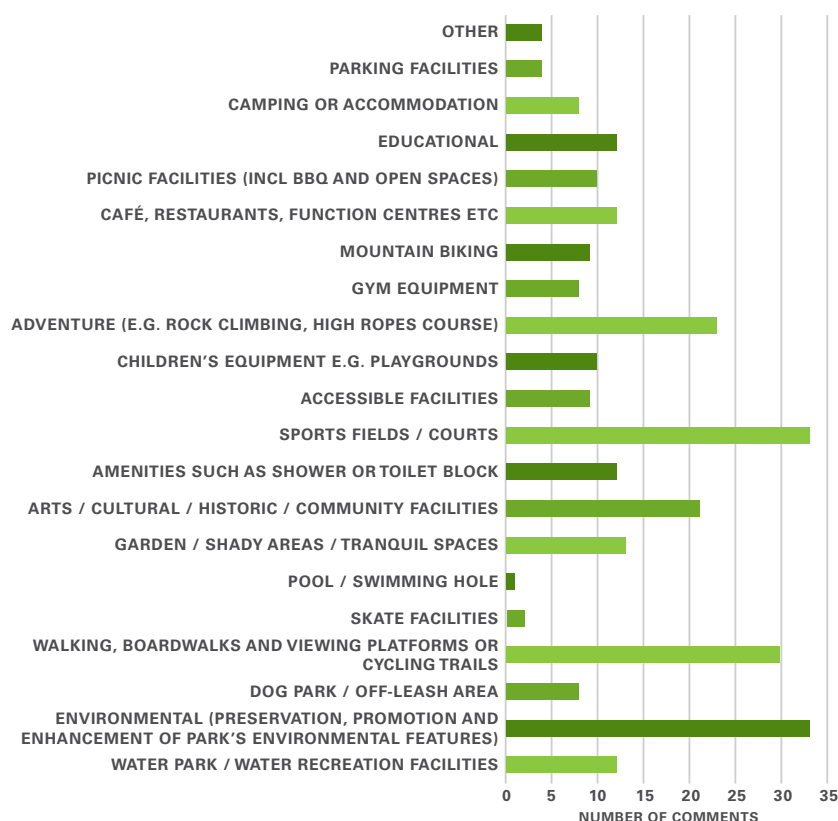
Walking trails (56%) and mountain bike trails (55%) were survey respondents' preferred options for Old Mans Valley. Extending the trails and ensuring this area was conducive to both mountain bikers and bushwalkers was of high importance to many who completed the survey, and was reflected in other forms of engagement.

Survey Question

Q. What kind of facilities would you like to see in Old Mans Valley? (Maximum 3 choices)



Following the Survey, a free text box was provided for respondents to leave any additional thoughts about Old Mans Valley.



Consistent with the results from the quarry area, the preservation, promotion and enhancement of the park's environmental aspects was important to the majority of respondents. Boardwalks and adventure recreation facilities all shone through as possible inclusions. There was support for sporting facilities in Old Mans Valley. However, there was no singular sporting facility that received the most support. Suggestions made were for cricket facilities, an athletics track, a soccer field and multi-use oval.

OLD MANS VALLEY

Suggestions raised in written and email submissions:

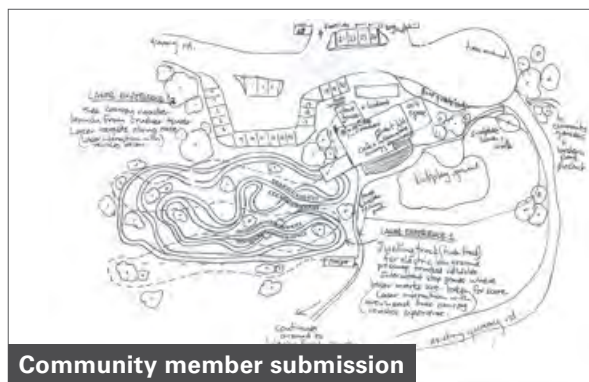
- » Educational facilities about Blue Gum forest and other native flora and fauna
- » Bush walking trails
- » Gardens and tranquil spaces

“Extending the trails would ensure this area was conducive to both mountain bikers and bushwalkers.”

– Stakeholder

“This area should be the jewel in the crown for sports in the Hornsby district... This could be a fantastic sports ground for the next generation of Rugby’s Wallabies, Australian Cricketers and Netballers and other district sports.”

– Survey



Community member submission



“Create a “Sensory” pathway, suitable for wheelchair access, and the less able in the community, a safe environment so that the feel of the bush, the odour of the eucalypts and flowers, may be appreciated by those less able to venture off on their own.”

– Submissions

“Perhaps there could be a Heritage Walk with plaques like the ones at Brooklyn, the plaques can explain the history of the area also Ginger Meggs was part of that area where he and his mates often use to go.”

– Submissions

OLD CRUSHER PLANT

Popular suggestions:

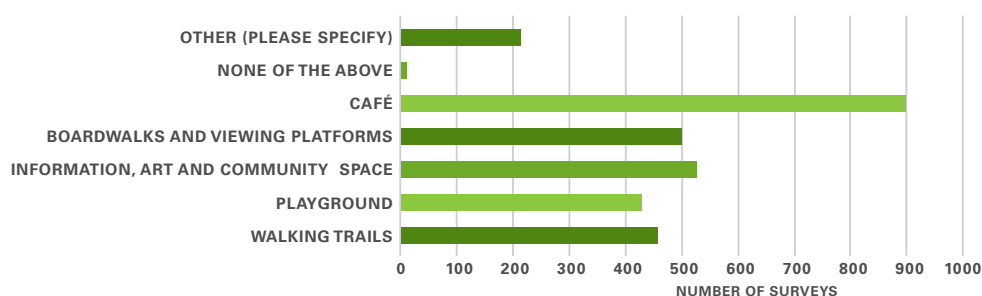
- » Café/restaurant
- » Information centre
- » Arts/cultural/community facilities
- » Adventure recreation facilities



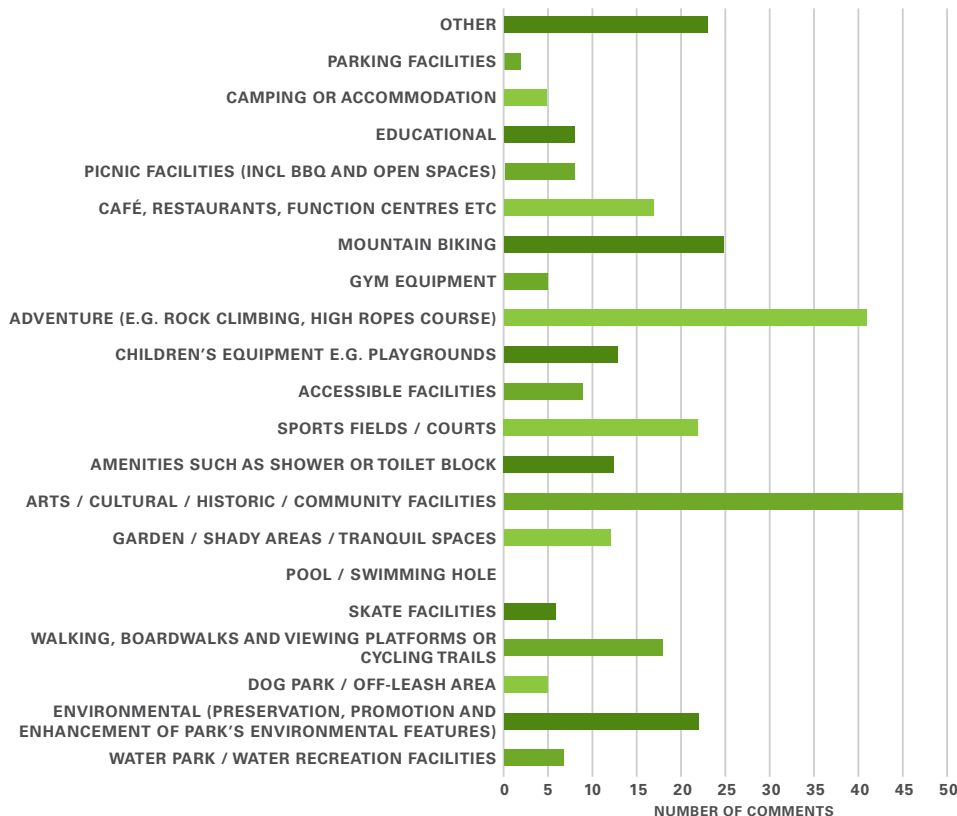
The most popular survey response of any question in the survey was the opportunity to provide a café in the old Crusher Plant with 72% of respondents selecting this option.

Survey Question

Q. What kind of facilities would you like to see at the old Crusher Plant in the Park? (Maximum 3 choices)



Following the Survey, a free text box was provided for respondents to leave any additional thoughts about the old Crusher Plant.



As well as a café, respondents also thought the site was appropriate for the inclusion of arts/cultural/historic/community facilities and adventure recreation facilities. Mountain biking was also popular.

OLD CRUSHER PLANT

Suggestions raised in written and email submissions:

- » Multi-use function centre and community spaces
- » Educational centre about site's significance

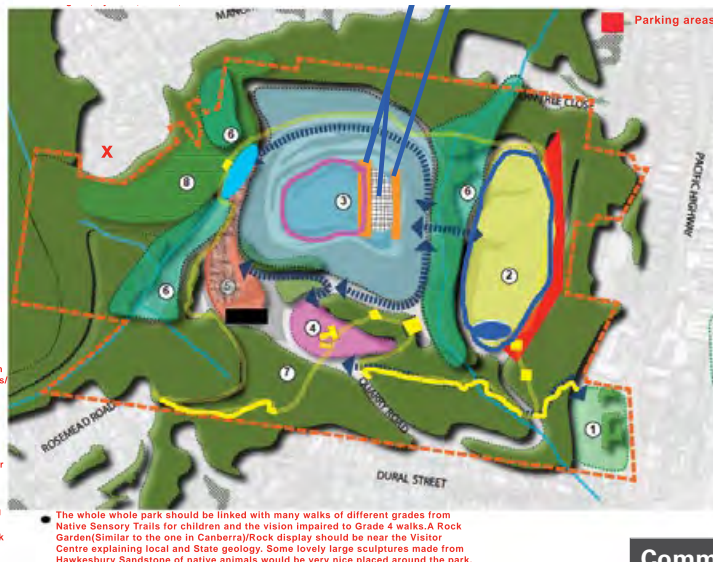
"I'd like to suggest a café with an adjacent children's park/play area – parents can use the café while the children use the play area."

– Submissions

"Our community is diverse. Let's harness this and create a space where we can hold multicultural festivals, concerts, theatre, food trucks, art shows etc."

– Survey

- 2 Old Man Valley Zone**
Grassy parkland with picnic areas, areas for playing ball games/non ball playing areas and level paths for prams and wheelchairs.
Level walking track around the edge of grassed area for exercise and less able (no bikes unless separate track is built parallel)
- Childrens learn to ride bike area and playground**
Walking Track/ separate bike path(non mountain bikes)
- Quarry Zone (high visual amenity)**
Dramatic vertical landscape with exposed vertical rockfaces, significant geological formations, disturbed regrowth and a lake
Retain the whole exposed diatreme, build a dam from fill with a walkover (see on map) Use diatreme as a backdrop for open air theatre/movies with amphitheatre seating for select operatheatrical performances and during the day for Educational purposes, fill crater lake behind the dam with water.
Boardwalk trail around crater lake and over the dam wall
- 4 Cultural Heritage Zone - Old Crusher Plant (high visual amenity)**
Visually Prominent cleared area with Industrial Buildings/Relics and disturbed regrowth
Turn the old crusher plant into a cafe/visitor centre with viewing platform on the roof.
Move Hornsby Community Nursery and Earthwise Cottage next to the crusher site to facilitate mass planting in degraded areas and train new Bushcare volunteers to help maintain new parkland.
- 5 South Western Fill Zone (high visual amenity)**
Elevated open areas with significant views
Use part of this area as an Educational centre for school/university students and environmental community projects.
Utilise this area to build some Eco accommodation, a group dorm for schools/groups doing the Great North Walk/ Duke of Edinburgh type activities plus some self contained cabins for visitors/tourists/birdwatchers.(There is no accommodation like this north of Sydney)
- 6 Gully Depressions/Steep Vegetated Creeklines (low visual amenity)**
These areas should be regenerated/revegetated with plants of local provenance (Consult with Ross at the Community Nursery).
PLEASE DO NOT PLANT EXOTICS IN THIS NEW PARKLAND.
That's what the Botanic Gardens are for. It would be an insult to the hundred of volunteers spending thousands of hours every year removing exotic weeds from Hornsby Shire.
I like the idea of a wetland area that was mentioned on one of the other document maps(as long as it didn't interfere with the Blue Gum Diatreme Forest), that could be used for bird/nature watching with hides and walks etc for a more peaceful pastime.
- Keep existing heritage items and have a signposted Heritage Track**
Walk with interpretive signs



Community member submission

"There is great potential for paid guided walks with volunteers, and other educational opportunities based on the geology and cultural history. The old crushing plant buildings could become an education centre."

– Submissions

"This area would be the ideal location for a multi-use space that could be used by business, community and educational groups."

– Stakeholder

Community member submission



"An adventure playground, swimming area and cultural facilities would be such a great addition as it would give my whole family even more things to do in the area!"

– Submissions

www.elton.com.au

