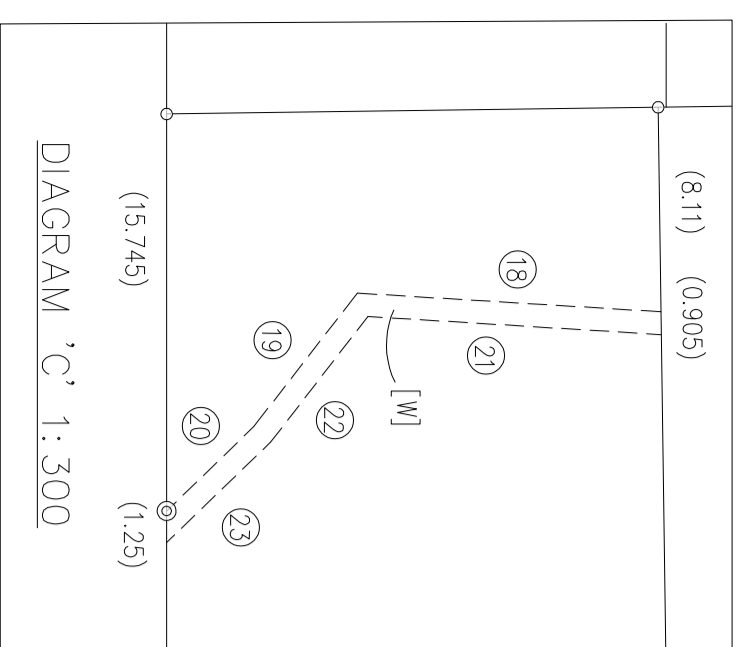


SCHEDULE OF CURVED LINES

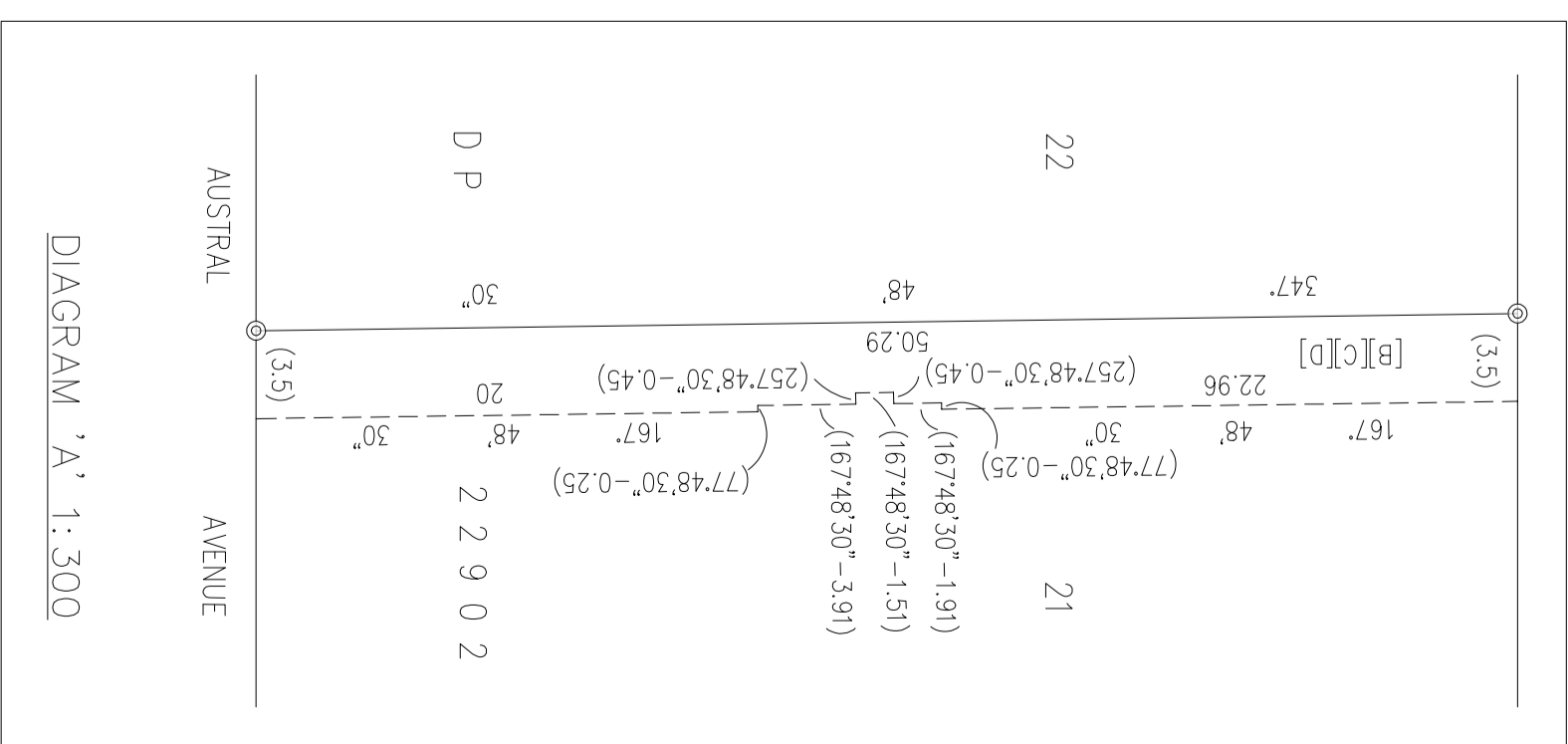
LINE	BEARING	DISTANCE	ARC	RADIUS
1	206°20'50"	2.26	2.265	13.445
2	177°12'30"	6.08	-	-
3	176°30'10"	2.435	-	-
4	161°35'55"	1.53	1.55	2.975
5	110°25'45"	4.035	4.095	6.905
6	86°50'30"	2.82	2.83	9.51
7	122°51'35"	4.615	5.125	3.265
8	165°07'35"	2.165	-	-
9	345°48'10"	1.5	1.5	13.56
10	349°40'30"	3.085	-	-
11	357°26'55"	2.985	2.985	30.9
12	61°11'0"	0.495	0.495	2.37
13	8°47'05"	3.035	3.05	8.88
14	336°12'45"	6.505	7.10	5.29
15	278°01'30"	3.57	-	-
16	247°15'	3.07	3.225	3
17	256°28'25"	2.635	2.86	2.05
18	172°06'26"	12.065	-	-
19	296°20'24"	6.705	-	-
20	304°34'21"	4.81	-	-
21	172°07'45"	11.655	-	-
22	296°20'24"	6.29	-	-
23	304°34'21"	5.74	-	-
24	313°03'40"	2.3	2.325	4.225



COORDINATE SCHEDULE

MARK	M.G.A. CO-ORDINATES	CLASS	PU	METHOD	STATE
	EASTING	NORTHING			
SSM 88681	320177.388	6263433.406	B	SCMS	FOUND
SSM 88682	320205.433	6263281.337	B	SCMS	FOUND
SSM 88683	320235.526	6263232.971	B	SCMS	FOUND

DATE OF SCMS CO-ORDINATES: 21/02/2022 MGA ZONE: 56 MGA DATUM: GDA2020
COMBINED SCALE FACTOR: 0.999976



- (X) COVENAN - C624671
- [A] RIGHT OF CARRIAGEWAY 3.5 WIDE AND VARIABLE (DP857137)
- [B] RIGHT OF CARRIAGEWAY 3.5 WIDE AND VARIABLE (DP857137)
- [C] EASEMENT FOR SERVICES 3.5 WIDE & VARIABLE (DP857137)
- [D] EASEMENT TO DRAIN WATER 3.5 WIDE & VARIABLE (DP857137)
- [E] RIGHT OF CARRIAGEWAY VARIABLE WIDTH
- [W] EASEMENT TO DRAIN WATER 0.9 WIDE

SURVEYOR
Name: MINGYANG JIANG
Date: 31/03/2022
Reference: 500364-2

PLAN OF SUBDIVISION OF LOT 172 IN DP857137
LGA: HORNSBY
Locality: BEECROFT
Reduction Ratio: 1:500
Lengths are in metres.

Registered