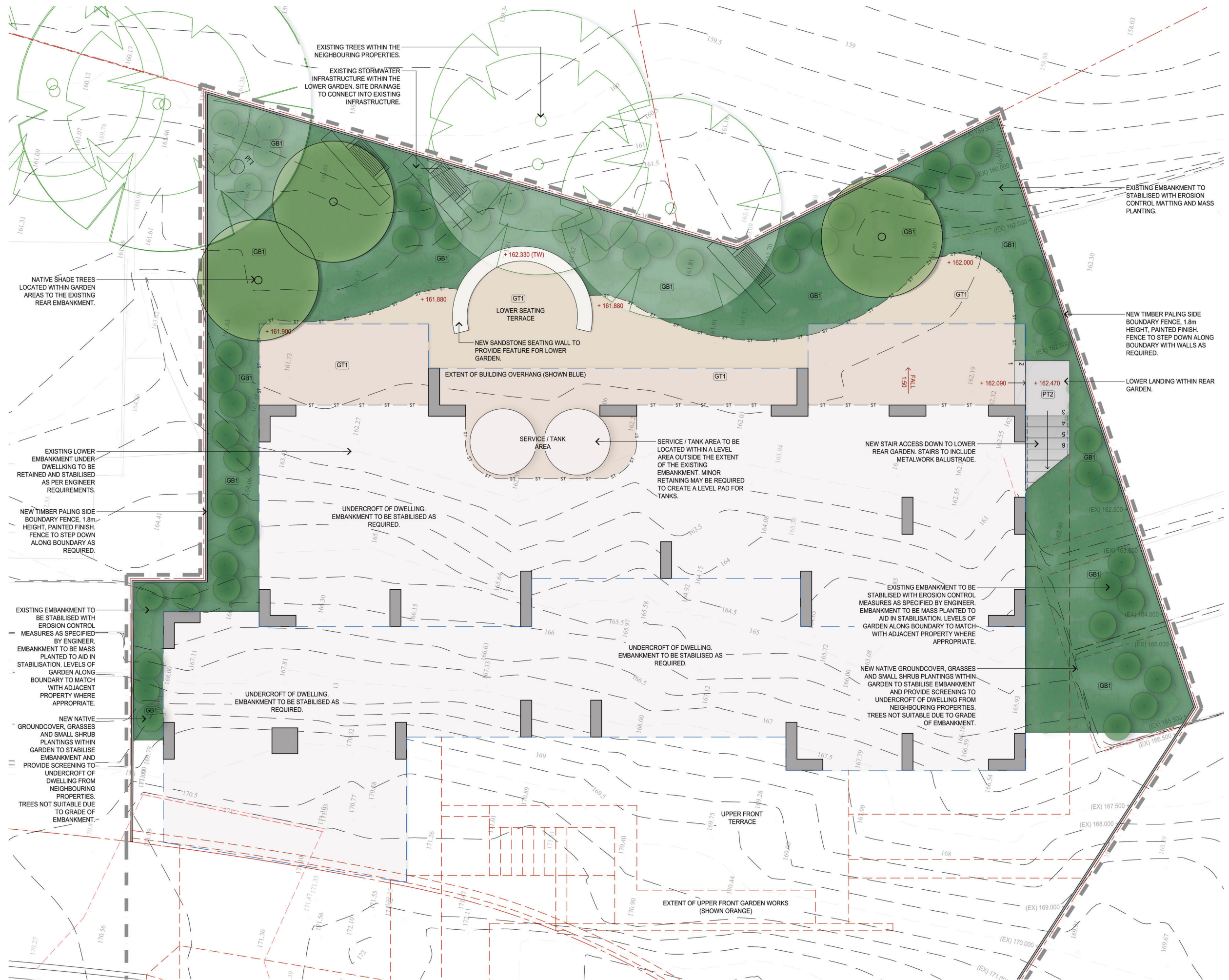
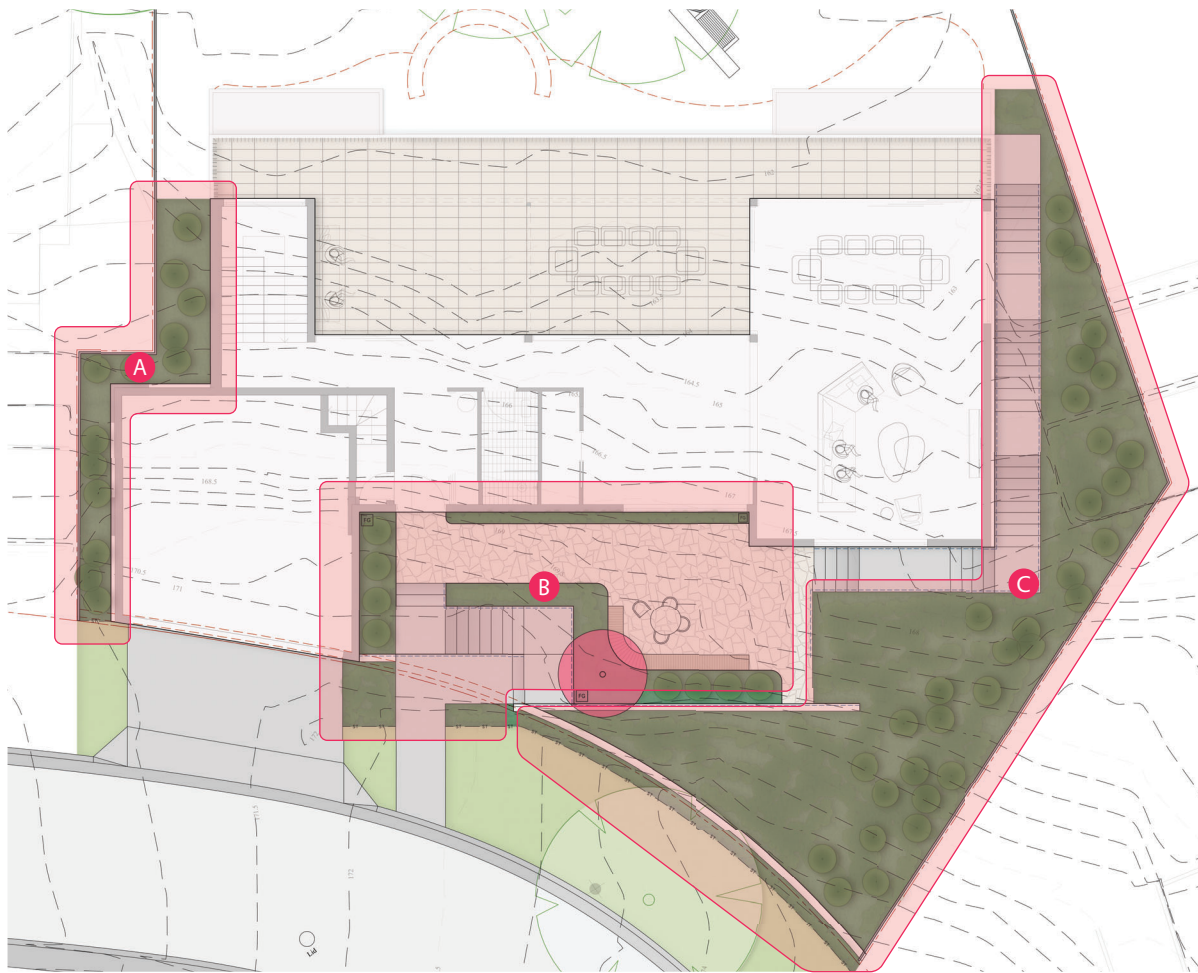


LEGEND:

	EXTENT OF LANDSCAPE WORKS.
	PROPERTY BOUNDARY - REFER TO SURVEY.
	PROPOSED DEMOLITION WORKS - REFER TO SURVEY.
	EXISTING FINISHED SURFACE LEVELS - REFER TO SURVEY.
	PROPOSED FINISHED SURFACE LEVELS FOR LANDSCAPE WORKS.
	NEW GALVANISED STEEL GARDEN EDGING.
	FENCE TYPE 1 - NEW TIMBER PALING BOUNDARY FENCE, 1.8m HEIGHT, PAINTED FINISH.
	FENCE TYPE 2 - NEW METALWORK BALUSTRADE, 1.1m HEIGHT.
	PAVEMENT TYPE 2 - STONE UNIT PAVING INSTALLED ON MORTAR BEDDING AND REINFORCED CONCRETE BASE SLAB.
	GRAVEL PATHWAYS TYPE 1 - STABILISED AND COMPACTED, DECOMPOSED GRANITE GRAVEL PATHWAYS.
	GARDEN AREAS 1 - NEW GARDENS, CULTIVATED SUBGRADE, EROSION CONTROL MATTING (TO EMBANKMENTS), IMPORTED ORGANIC GARDEN SOIL MIX 300mm MIN DEPTH, IMPORTED ORGANIC MULCH 75mm DEPTH, MASS PLANTING.
	NEW FEATURE SHRUB PLANTINGS.
	NEW TREE PLANTINGS.

NOTE:
1. NOT FOR PRICING OR CONSTRUCTION. SUBJECT TO DETAILED DESIGN.
2. SUBJECT TO COUNCIL APPROVALS.
3. REFER TO DRAWING 2302-01 FOR PROJECT GENERAL NOTES.





Planting DA Plan - Front Garden
Scale: 1:100 @A1

Area A

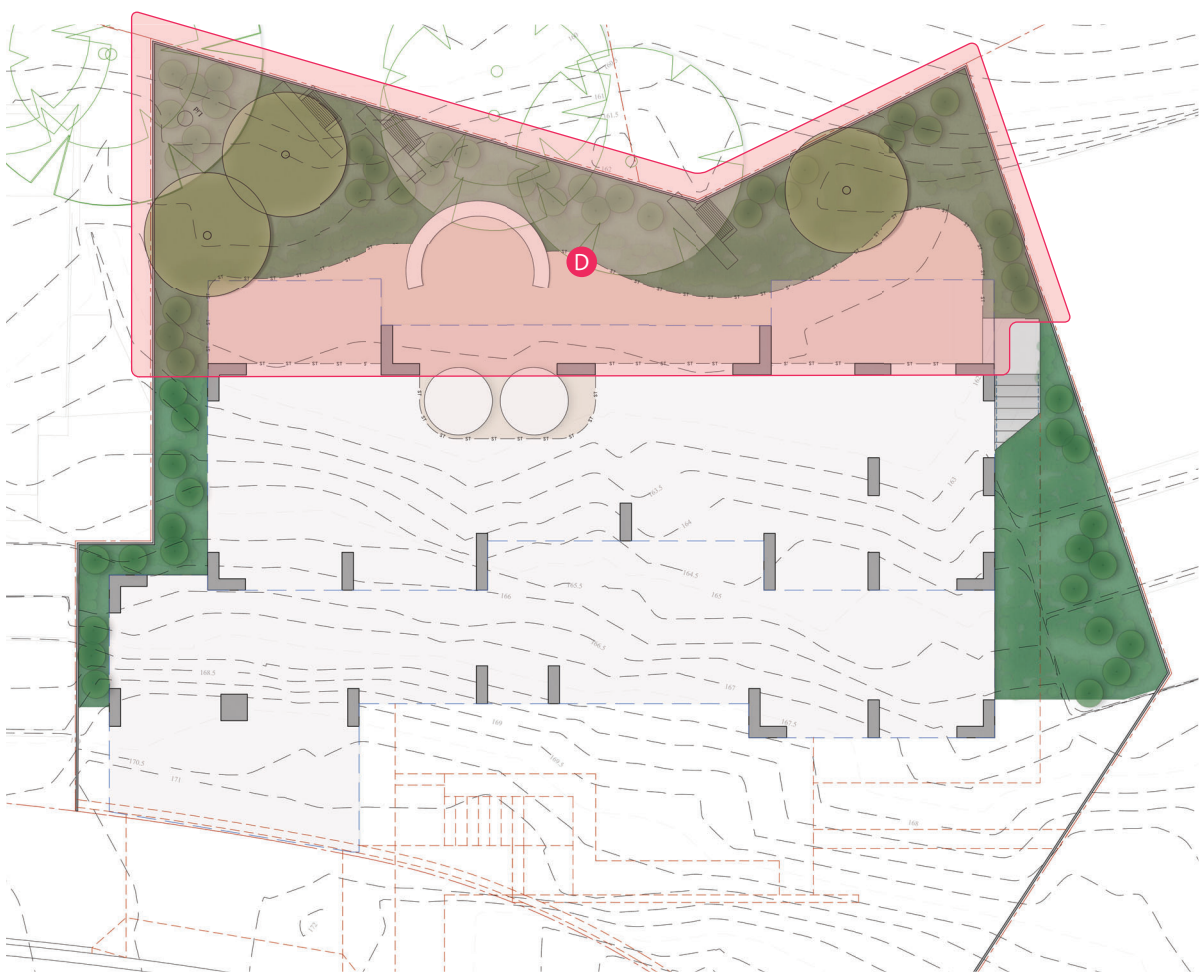
Plant Code:	Quantity:
Groundcovers:	
CIS ant	7
DIC rep	15
HAR vio	6
HIB sca	7
VIO hed	15
Grasses, Broadleaf + Ferns:	
DIA cae LJ	12
LIR mus JR	10
LOM lon T	12
LOM hys	10
Broadleafed + Ferns:	
ALP nut	4
ALP zer	3
BLE gib	5
CRI ped	3
DOR exc	3
DOO asp	5
Shrubs + Screening:	
ACE smi	3
MET col T	3
SYZ aus R	7

Area B

Plant Code:	Quantity:
Groundcovers:	
CAS gla CI	6
CHR api	9
GRE lan MT	8
ROS off P	6
SEN man	8
VIO hed	9
Grasses, Broadleaf + Ferns:	
ANI AV	5
DIA cae LJ	15
LIR mus JR	15
Broadleafed + Ferns:	
ALP nut	3
ASP ela	7
CTE BM	7
LIG ren DV	7
Shrubs + Screening:	
CRA ova BB	3
HEL pet	5
MET col T	2
RAP ind SM	5
WES fru GB	5
Trees:	
LAG ind T	1

Area C

Plant Code:	Quantity:
Groundcovers:	
CHR api	30
CIS ant	15
DIC rep	35
GRE lan MT	12
HAR vio	15
HIB sca	12
VIO hed	35
Grasses, Broadleaf + Ferns:	
ANI AV	15
DIA cae LJ	54
LOM lon T	54
LOM hys	35
POA lab E	42
Broadleafed + Ferns:	
ALP zer	6
BLE gib	15
CRI ped	9
DOR exc	7
DOO asp	15
Shrubs + Screening:	
ACE smi	12
BAN rob	9
HEL pet	12
MET col T	7
SYZ aus C	7
SYZ aus R	12
WES fru GB	9



Planting DA Plan - Rear Garden
Scale: 1:100 @A1

Area D

Plant Code:	Quantity:
Groundcovers:	
CHR api	15
DIC rep	35
GRE lan MT	15
HAR vio	12
HIB sca	15
VIO hed	35
Grasses, Broadleaf + Ferns:	
ANI AV	9
DIA cae LJ	44
LOM lon T	44
POA lab E	38
Broadleafed + Ferns:	
ALP nut	9
ALP zer	9
BLE gib	15
CRI ped	12
CYA coo	5
DOR exc	9
DOO asp	15
Shrubs + Screening:	
ACE smi	6
BAN rob	7
HEL pet	12
MET col T	7
RAP ind SM	12
SYZ aus C	6
SYZ aus R	6
WES fru GB	7
Trees:	
ELA eum	1
TRI lau L	1

Planting General Notes:

- + Refer to drawing 2302-05 for the Plant Schedule & Maintenance Notes/Requirements.
- + Planting design subject to detailed design. Not for pricing or construction.
- + All new deep soil garden areas subgrade to be cultivated prior to installation of new imported organic garden soil.
- + All new deep soil garden areas to include minimum 300mm depth of imported organic garden soil, such as 'ANL Organic Garden Soil', mixed through existing site soil where possible.
- + All new podium garden areas to include minimum 900mm depth of imported organic garden soil, such as 'ANL Planter Box Mix'.
- + All garden areas to be mulched with 75mm depth of imported organic garden mulch, such as 'ANL Eucy Mulch'.
- + All new lawn areas to include minimum 100mm depth of imported turf underlay, such as 'ANL Turf Underlay'.
- + Sub-surface drainage to all garden areas, connected to site stormwater.
- + All garden areas to be irrigated with a fully automated drip-irrigation system, connected to the sites stormwater harvesting system. Irrigation system design subject to detailed design.



T 0413 445 096
E info@paddockstudio.com.au
Groundfloor 46-52 Meagher Street
Chippendale NSW 2008
www.paddockstudio.com.au



Registered Landscape Architects
ALIA 1761
ABN 82 628 312 274
ACN 628 312 274

Copyright Paddock Studio Pty Ltd 2018. Copyright in whole and every part belongs to Paddock Studio Pty Ltd. Not to be reproduced in any part without written agreement from Paddock Studio Pty Ltd.
Not for pricing or construction. Drawing to be read in conjunction with all relevant project and consultant documentation.

Issue: 09.12.22
DRAFT A
Date: 19.12.22
Reason: For Client Discussion
For DA Submission
Reviewed by: DW
DW

Project: 45A Orana Avenue
Hornsby NSW 2077
Client: Tanya and Adam Perring

Title: Planting DA Plans

Project No.: 2302
Date: 19.12.22
Scale: 1:100 @ A1



Drawing: 2302-04
Issue: A

Plant Schedule & Maintenance Requirements:

(to be read in conjunction with drawing 2302-04)

Code	Scientific name:	Common name:	Pot Size:	Mature height & spread*:	Density:	Quantity:	Maintenance requirements:
	Groundcovers:						
CAS gla CI	Casuarina glauca 'Cousin it'	Cousin It	140mm Pot	0.5 x 0.5m	3 /m²	6	Seasonal maintenance to promote new growth. Allow to cascade down face of walls.
CHR api	Chrysocephalum apiculatum	Yellow Buttons	140mm Pot	0.1 x 0.3m	6 / m²	54	Seasonal maintenance to promote new growth. Maintain to garden extent if it begins encroaching on paths/lawn areas.
CIS ant	Cissus antarctica	Kangaroo Vine	140mm Pot	0.1 x 0.3m	6 / m²	22	Allow to form a natural weed-cover within garden areas.
DIC rep	Dichondra repens	Kidney Weed	Tubestock	0.1 x 0.3m	8 / m²	85	Allow to form a natural weed-cover within garden areas.
GRE lan MT	Grevillea lanigera 'Mt Tamboritha'	Spider Flower	140mm Pot	0.1 x 0.3m	6 / m²	35	Seasonal maintenance to promote new growth. Maintain to garden extent if it begins encroaching on paths/lawn areas.
HAR vio	Hardenbergia violacea	False Sarsaparilla	140mm Pot	0.1 x 0.3m	7 / m²	33	Maintain compact form.
HIB sca	Hibbertia scandens	Golden Guinea Flower	140mm Pot	0.5m x 1m	4 / m²	34	Seasonal maintenance to promote new growth. Maintain to garden extent if it begins encroaching on paths/lawn areas.
ROS off P	Rosmarinus officinalis 'Prostratus'	Creeping Rosemary	140mm Pot	0.1 x 0.3m	6 / m²	6	Seasonal maintenance to promote new growth. Allow to cascade down face of walls.
SEN man	Senecio mandraliscae	Blue Chalk Fingers	140mm Pot	0.3 x 0.6m	4 / m²	8	Maintain compact form.
VIO hed	Viola hederacea	Native Violet	Tubestock	0.1 x 0.3m	6 / m²	94	Allow to form a natural weed-cover within garden areas.
	Grasses:						
ANI AV	Anigozanthos 'Amber Velvet'	Kangaroo Paw (Orange-Red)	140mm Pot	0.5 x 0.5m	5 / m²	29	Seasonal maintenance to remove dead flowers.
DIA cae LJ	Dianella caerulea 'Little Jess'	Blue Flax Lily	140mm Pot	0.4 x 0.4m	5 / m²	125	
LIR mus JR	Liriope muscari 'Just Right'	Liriope	140mm pot	0.4 x 0.4m	5 / m²	25	
LOM lon T	Lomandra longifolia 'Tanika'	Lomandra Tanika	140mm Pot	0.5 x 0.5m	4 / m²	110	
LOM hys	Lomandra hystrix	Mat Rush	140mm Pot	0.6 x 0.6m	5 / m²	45	
POA lab E	Poa labillardieri 'Eskdale'	Common Tussock Grass	140mm Pot	0.6 x 0.6m	4 / m²	80	Seasonal maintenance to promote new growth.
	Broadleafed + Ferns:						
ALP nut	Alpinia nutans	Dwarf Cardamom	200mm Pot	1.0 x 1.5m	2 / m²	16	Seasonal maintenance to remove dead leaves.
ALP zer	Alpinia zerumbet	Shell Ginger	200mm Pot	2.0 x 1.0m	2/m²	18	Seasonal maintenance as required to remove dead foliage.
ASP ela	Aspidistra elatior	Cast Iron Plant	200mm pot	0.8 x 0.8m	3 / m²	7	Seasonal maintenance to remove dead leaves.
BLE gib	Blechnum gibbum	Silver Lady Fern	200mm pot	0.6 x 0.6m	3 / m²	35	Seasonal maintenance to remove dead leaves.
CRI ped	Crinum pedunculatum	Swamp Lilly	200mm pot	0.8 x 0.8m	3 / m²	24	Seasonal maintenance to remove dead flowers. Maintain compact form by removing lower leaves.
CTE BM	Ctenanthe burle-marxii	Never Never Plant	200mm pot	0.3 x 0.6m	4 / m²	7	Seasonal maintenance as required to remove dead foliage.
CYA coo	Cyathea cooperi	Tree Fern	45L	2.0 x 3.0m	1 / m²	5	Seasonal maintenance as required to remove dead foliage.
DOR exc	Doryanthes excelsa	Gymea Lilly	200mm Pot	1.5 x 1.0m	1 / m²	19	Seasonal maintenance to remove dead flowers. Maintain compact form by removing lower leaves.
DOO asp	Doodia aspera	Prickly Rasp Fern	140mm Pot	0.6 x 0.6m	4 / m²	35	Seasonal maintenance as required to remove dead foliage.
LIG ren DV	Ligularia reniformis 'Designer Verde'	Tractor Plant	140mm Pot	0.6 x 0.6m	4 / m²	7	Seasonal maintenance as required to remove dead foliage and flowers.
	Shrubs + Screening:						
ACE smi	Acmena smithii var. minor	Dwarf Lilly Pilly	200mm Pot	3-4 x 1-2m	1 / m²	21	Seasonal maintenance to maintain informal hedge to height of boundary fence 1.8-2m height by 0.7m spread.
BAN rob	Banksia robur	Swamp Banksia	200mm Pot	2.0 x 2.0m	2 / m²	16	Seasonal maintenance to maintain compact form, 1m height by 0.8m spread.
CRA ova BB	Crassula ovata 'Blue Bird'	Blue Jade	200mm Pot	0.2 x 0.6m	4 / m²	3	Maintain compact form.
HEL pet	Helichrysum petiolare	Licorice Plant	200mm pot	0.7 x 0.7m	4 / m²	29	Seasonal maintenance to maintain compact form, 0.4m height by 0.6m spread.
MET col T	Metrosideros collina 'Tahiti'	Dwarf New Zealand Christmas Bush	200mm pot	1.0 x 1.5m	2 / m²	19	Seasonal maintenance to maintain compact form, 1m height by 0.8m spread.
RAP ind SM	Raphiolepis indica 'Snow Maiden'	Indian Hawthorn White	200mm pot	0.8 x 1.0m	4 / m²	17	Seasonal maintenance to maintain compact form, 0.8m height by 0.8m spread.
SYZ aus C	Syzygium australe 'Cascade'	Lilly Pilly	25L	2.0 x 1.0m	1 / m²	13	Seasonal maintenance to maintain informal hedge to 1.5-1.7m height by 0.7m spread.
SYZ aus R	Syzygium australe 'Resilience'	Lilly Pilly	25L	2.0 x 1.5m	1 / m²	25	Seasonal maintenance to maintain informal hedge to height of boundary fence 1.8-2m height by 0.7m spread.
WES fru GB	Westringia fruticosa 'Grey Box'	Compact Coastal Rosemary	140mm Pot	0.5 x 0.5m	4 / m²	21	Seasonal maintenance to maintain compact form, 0.4m height by 0.4m spread.
	Trees:						
ELA eum	Elaeocarpus eumundii	Quandong	75L	8-10 x 3-4m	-	1	Maintain compact with clear trunk 1.5m height.
LAG ind T	Lagerstroemia indica 'Tuscarora'	Crepe Myrtle	75L	5 x 4	-	1	Maintain compact with clear trunk 1.5m height.
TRI lau L	Tristaniopsis laurina 'Luscious'	Water Gum	75L	10-12 x 5m	-	2	Maintain compact with clear trunk 1.5m height.
	Turf Planting:						
TU1	-	Village Green 'Kikuyu'	-	-	-	-	Maintain as required to pile height of approximately 40mm.

Notes:

- + *Nominal height / spread at maturity - will vary based on maintenance regimes and site growing conditions.
- + Planting design subject to detailed design and documentation.
- + Species selection subject to availability at time of tendering and construction.



CAS GLA CI: Casuarina glauca 'Cousin it'



CHR api: C. apiculatum Yellow Buttons



CIS ant: Cissus antarctica Kangaroo Vine



DIC rep: Dichondra repens Kidney Weed



GRE LAN MT: Grevillea lanigera 'Mt Tamboritha'



HAR vio: Hardenbergia violacea | False Sarsaparilla



HIB sca: Hibbertia scandens Golden Guinea Flower



ROS off P: Rosmarinus officinalis 'Prostratus'



SEN man: S. mandraliscae Blue Chalk Fingers



VIO hed: Viola hederacea Native Violet



ANI AV: Anigozanthos 'Amber Velvet' | Kangaroo Paw



DIA cae LJ: Dianella caerulea 'Little Jess' | Blue Flax Lily



LIR mus JR: Liriope muscari 'Just Right'



LOM lon T: Lomandra longifolia 'Tanika'



LOM hys: Lomandra hystrix



POA lab E: Poa labillardieri 'Eskdale'



ALP nut: Alpinia nutans Dwarf Cardamom



ALP zer: Alpinia zerumbet



ASP ela: Aspidistra elatior Cast Iron Plant



BLE gib: Blechnum gibbum Silver Lady Fern



CRI ped: C. pedunculatum Crinum Lily



CTE BM: Ctenanthe burle-marxii | Never Never Plant



CYA coo: Cyathea cooperi Tree Fern



DOR exc: Doryanthes excelsa Gymea Lilly



DOO asp: Doodia aspera Prickly Rasp Fern



LIG ren DV: Ligularia reniformis 'Designer Verde'



ACE smi: Acmena smithii var. minor



BAN rob: Banksia robur Swamp Banksia



CRA ova BB: Crassula ovata 'Blue Bird' | Blue Jade



HEL pet: Helichrysum petiolare Liquorice Plant



MET col T: M. collina 'Tahiti' Dwarf NZ Christmas Bush



RAP ind: R.indica 'Snow Maiden'



SYZ aus C: Syzygium australe 'Cascade' | Lilly Pilly



SYZ aus R: Syzygium australe 'Resilience'



WES fru GB: W.fruticosa Compact Coastal Rosemary



ELA eum: Elaeocarpus eumundii | Quandong



LAG iund T: Lagerstroemia indica 'Tuscarora'



TRI lau L: Tristaniopsis laurina 'Luscious'



T 0413 445 096
E info@paddockstudio.com.au
Groundfloor 46-52 Meagher Street
Chippendale NSW 2008
www.paddockstudio.com.au



Registered Landscape Architects
ALA 1761
ABN 82 628 312 274
ACN 628 312 274

Copyright Paddock Studio Pty Ltd 2018. Copyright in whole and every part belongs to Paddock Studio Pty Ltd. Not to be reproduced in any part without written agreement from Paddock Studio Pty Ltd.
Not for pricing or construction. Drawing to be read in conjunction with all relevant project and consultant documentation.

Issue:
DRAFT
A

Date:
09.12.22
19.12.22

Reason:
For Client Discussion
For DA Submission

Reviewed by:
DW
DW

Project: 45A Orana Avenue
Hornsby NSW 2077
Client: Tanya and Adam Perring

Title: Plant DA Schedule
Plant Images

Project No.: 2302
Date: 19.12.22
Scale: N/A @ A1

Drawing: 2302-05
Issue: A