

RFS TRAINING FACILITY

1049 Pacific Hwy, Cowan NSW 2081



TRAINING FACILITY SITE

DRAWING LIST

ID	DESCRIPTION	REV
RFS03- E00	COVER SHEET	01
RFS03- E01	EXISTING SITE PLAN	01
RFS03- E02	PROPOSED SITE PLAN	01
RFS03- E03	SEDIMENT CONTROL PLAN	01
RFS03- E04	SITE ANALYSIS PLAN	01
RFS03- E05	GROUND FLOOR PLAN	01
RFS03- E06	COLD HOUSE PROP PLANS	02
RFS03- E07	COLD HOUSE PROP ELEVATIONS	02
RFS03- E07	STORAGE SHED_SHELTER PLAN	01
RFS03- E08	STORMWATER CONCEPT PLAN	01
RFS03- E10	Landscaping Plan	01
RFS03- E11	SECTIONS	01
RFS03- E21	ELEVATIONS 1	01
RFS03- E22	ELEVATIONS 2	01
RFS03- E31	VIEWS	01
RFS03- E32	LANDSCAPING VIEWS	01

AREA CALCULATIONS

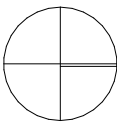
SITE AREA	9,432m ²
BUILDING AREA: EXISTING	1,512.68m ²
BUILDING AREA: ADDITIONAL	254.23m ²
SITE RATIO (FSR)	0.19

SPECIFICATIONS

- COMPLY WITH THE BCA (INCLUDING CURRENT VERSIONS OF REFERRED STANDARDS).
- REMOVE EXCAVATED AND DEMOLISHED MATERIALS FROM THE SITE.
- PROVIDE TERMIMESH OR KORDON TERMITE BARRIERS TO CODE REQUIREMENTS.
- CONNECT STORMWATER TO EXISTING STORMWATER LINES ON SITE.
- REFER TO STRUCTURAL ENGINEER'S DETAILS AND SPECIFICATIONS FOR STRUCTURAL WORK.
- ROOFING TO BE FIXED TO MANUFACTURERS RECOMMENDATIONS.
- WINDOWS AND GLAZED DOORS TO COMPLY WITH AS1288 SUPPLEMENT 1.
- ELECTRICAL FITOUT TO LATER DETAIL AND TO SUPPLY AUTHORITY'S REQUIREMENTS.

FINISHES SCHEDULE

EXTERNAL WALLS	SELECTED PROFILE SHEET STEEL
INTERNAL WALLS	PAINTED PLASTERBOARD
FLOORS	SELECTED FINISH AS ON PLAN
ROOF	SELECTED MATERIAL AS ON PLAN
WINDOWS	PC ALUMINIUM
EXTERNAL DOORS	SOLID CORE TIMBER
INTERNAL DOORS	HOLLOW CORE TIMBER
DETAILS	TO BE SELECTED



Notes

- ALL WORK TO COMFORM TO THE BCA AND TO RELEVANT AUSTRALIAN STANDARDS
- ALL DIMENSIONS TO BE CHECKED ON SITE PRIOR TO ORDERING. MANUFACTURE OR INSTALLATION OF ITEMS
- REFER TO SERVICES DOCUMENTATION FOR ELECTRICAL MECHANICAL AND HYDRAULIC SERVICES
- REFER TO STRUCTURAL ENGINEERS DOCUMENTATION FOR STRUCTURAL ITEMS

Issue	Date
01	REVISED DA 24/04/2024

MAITLAND BUTLER ARCHITECTS

office@maitlandbutler.com.au
108 Arcadia Rd, Arcadia NSW 2159
ABN 48022791946



(02) 9653 1037

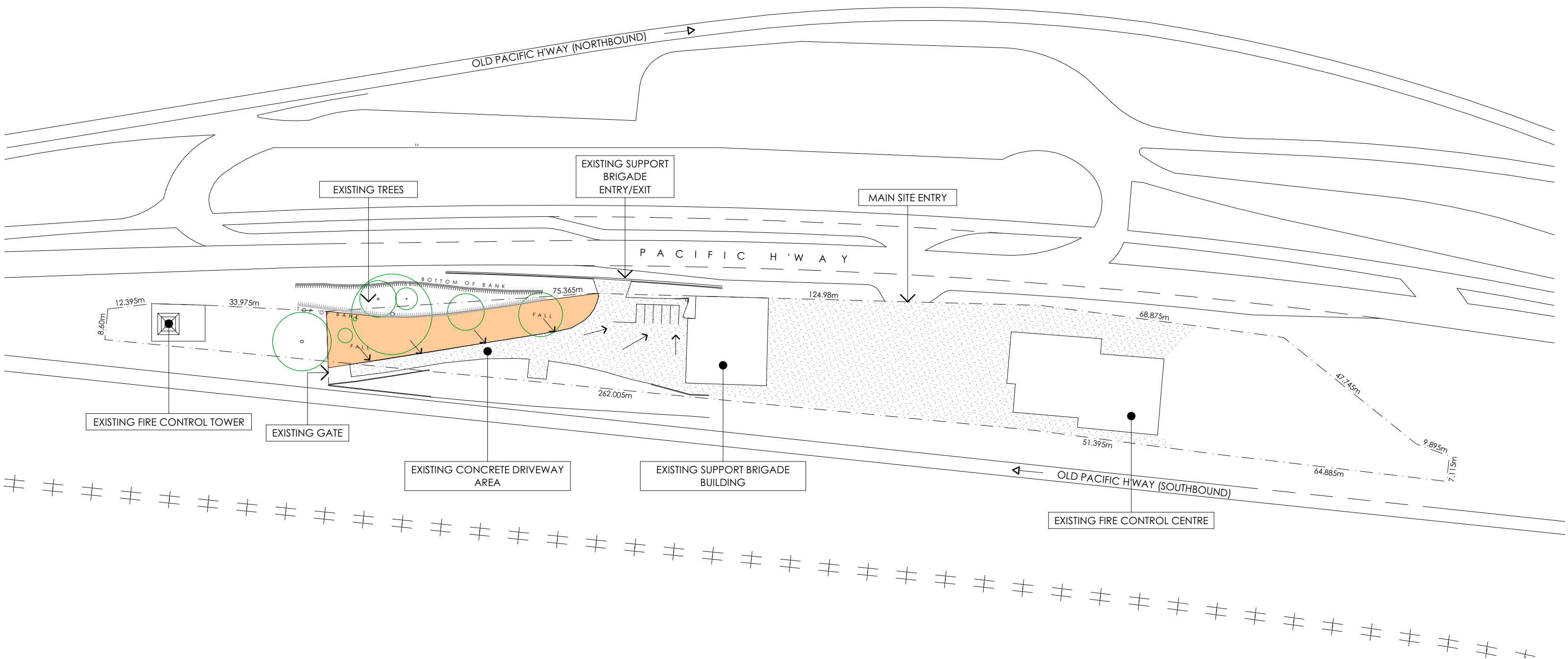
RFS TRAINING FACILITY
at
1049 Pacific Hwy Cowan, NSW 2081
for
NSW Rural Fire Service

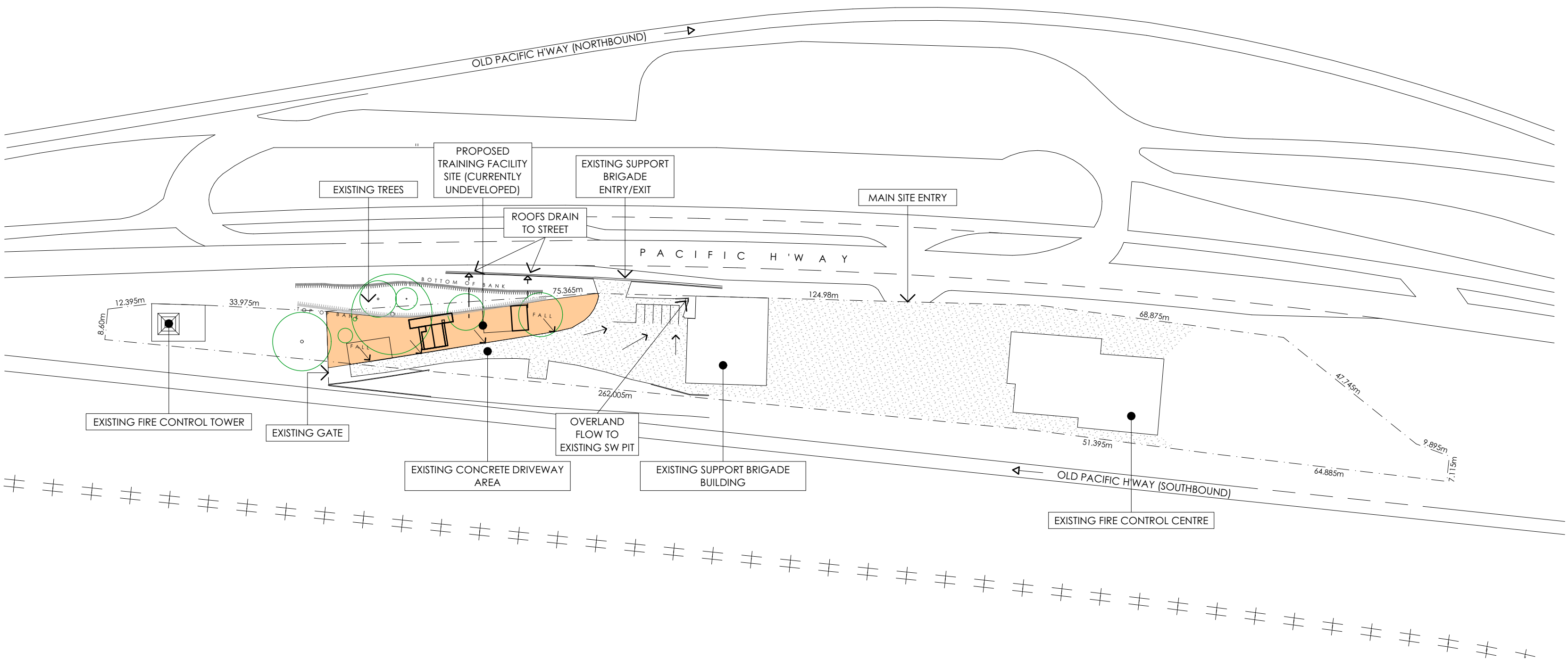
Drawn
Scale
Drawing No.

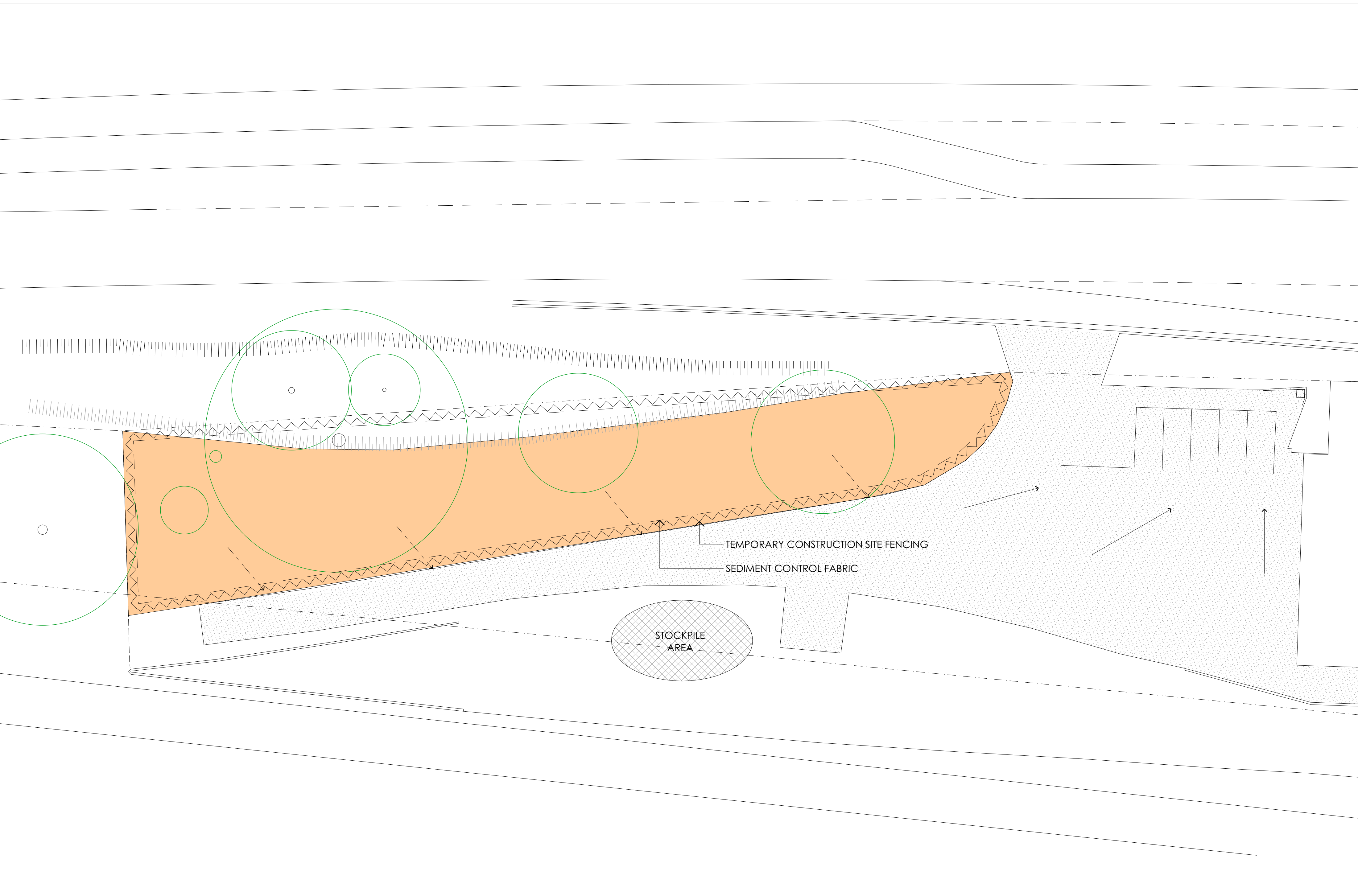
COVER SHEET

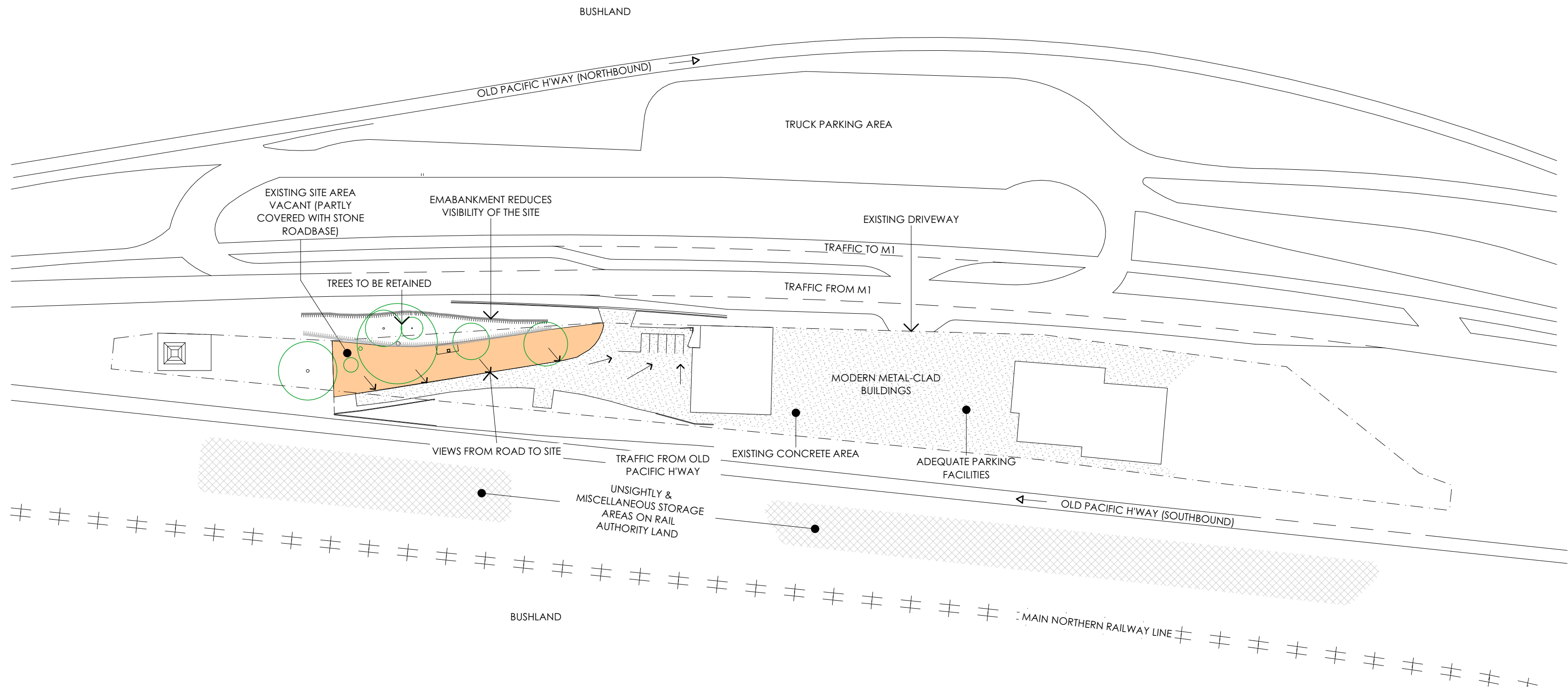
RB
@A2

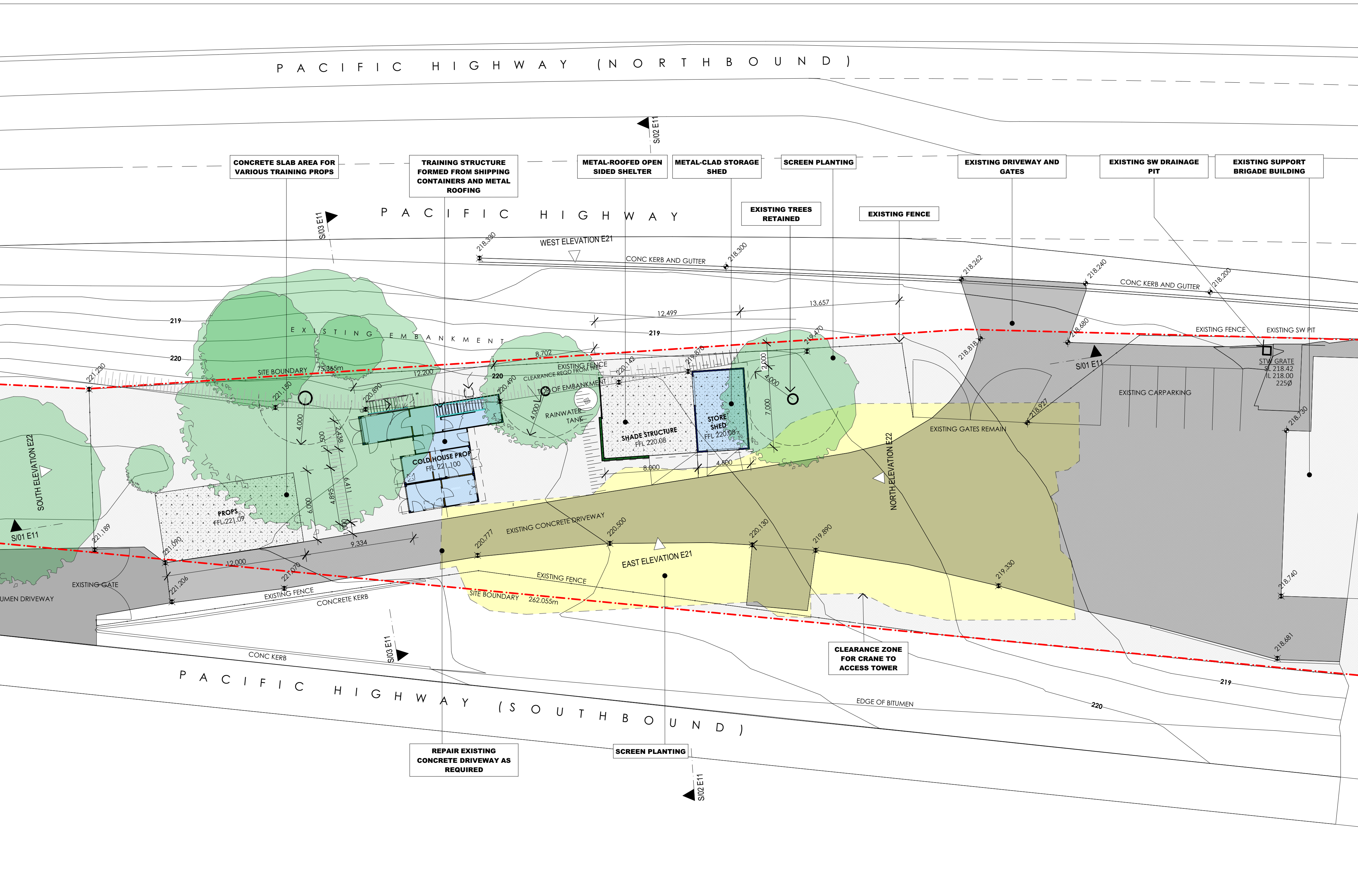
RFS03- E00

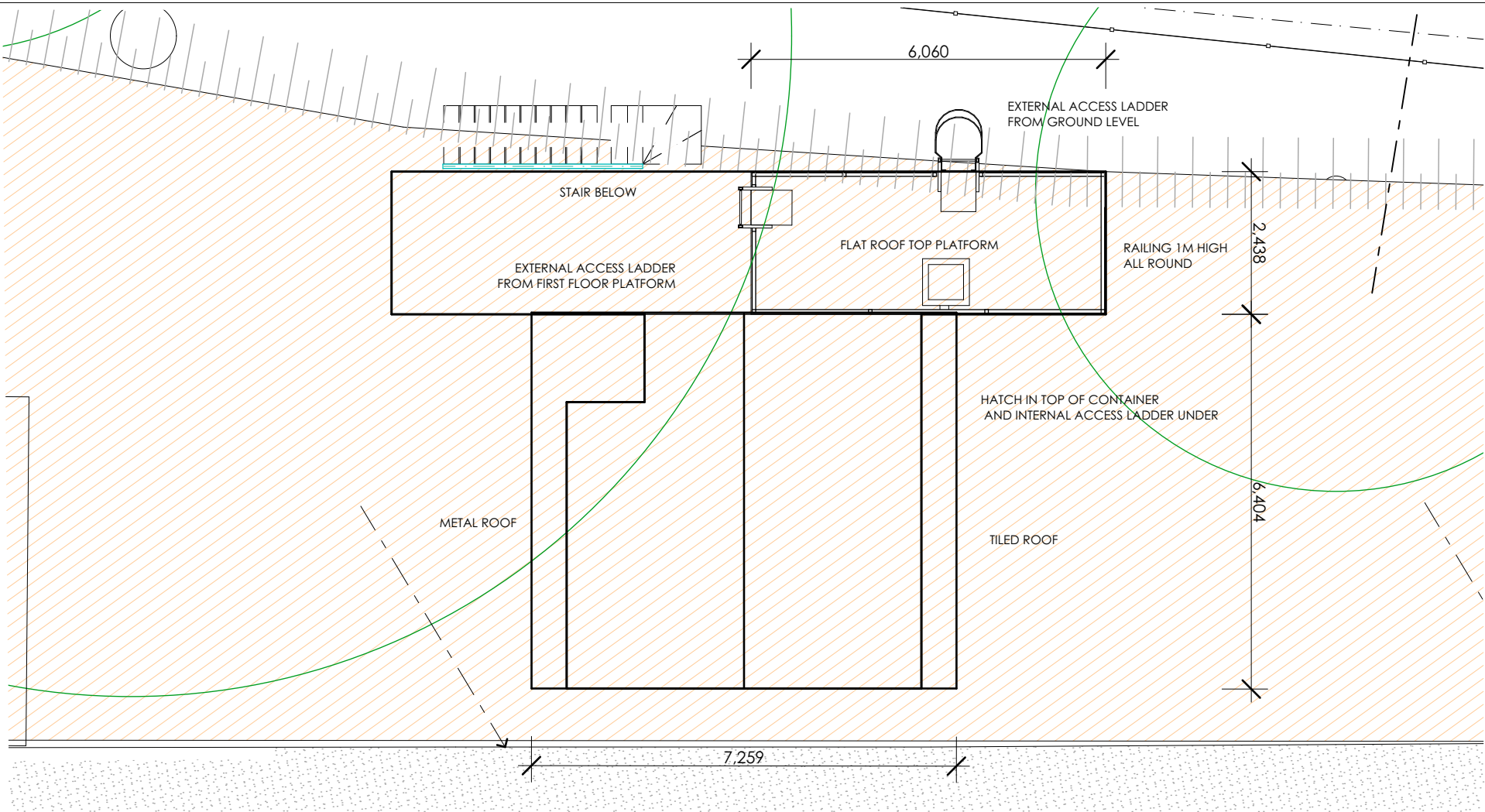




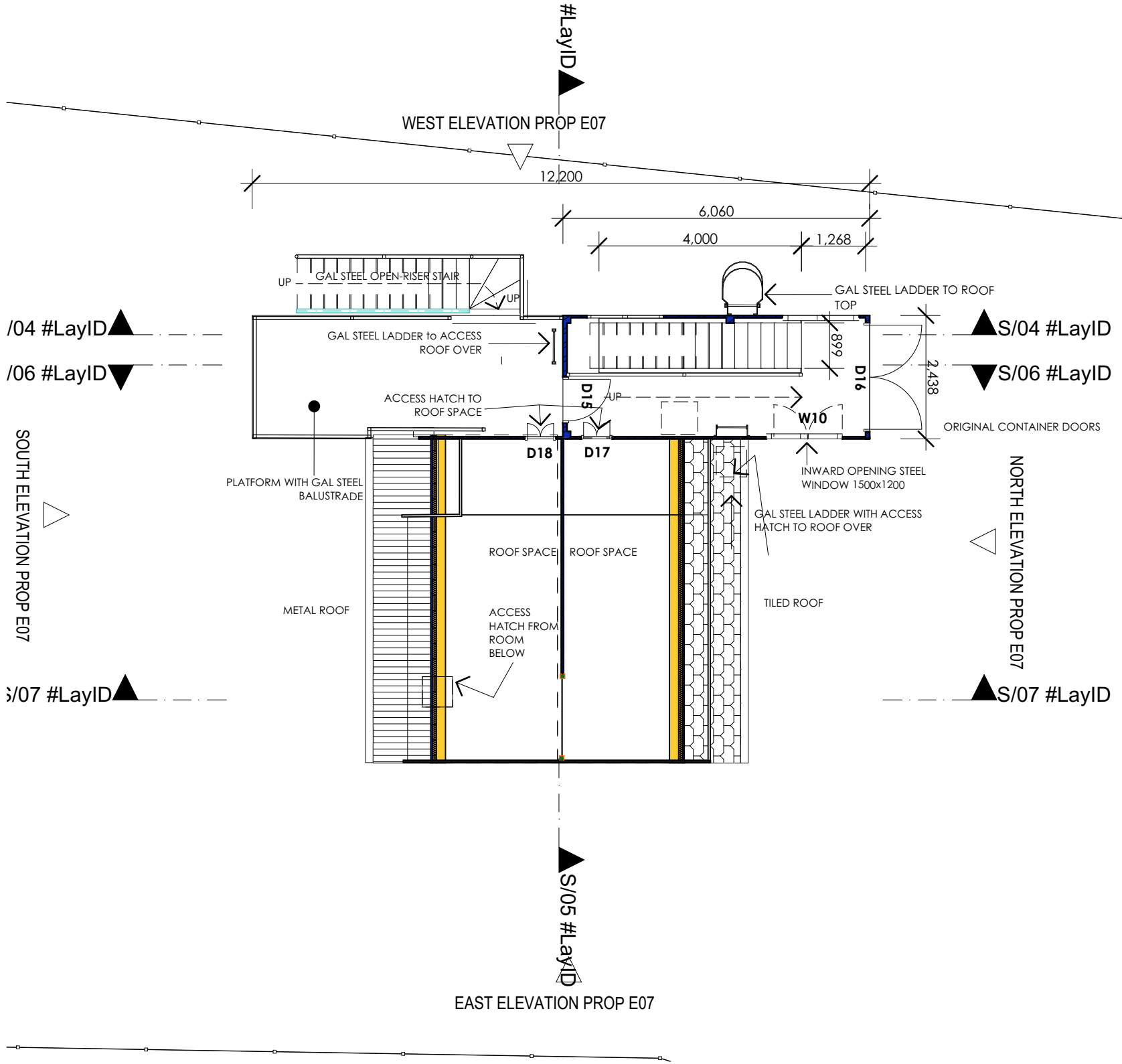




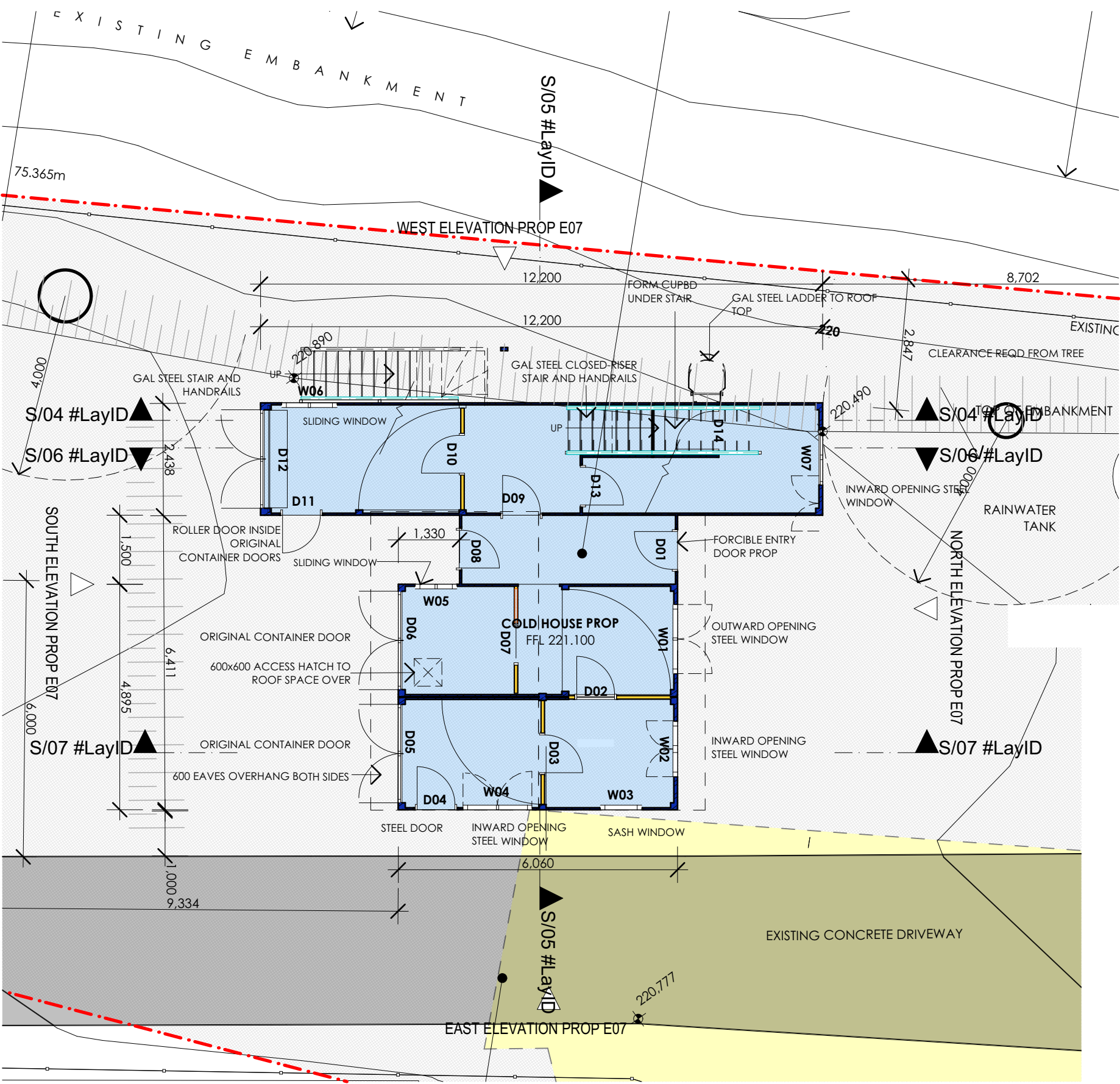




ROOF PLAN



UPPER FLOOR PLAN



GROUND FLOOR PLAN

Notes

- 1 ALL WORK TO CONFORM TO THE BCA AND TO RELEVANT AUSTRALIAN STANDARDS
- 2 ALL DIMENSIONS TO BE CHECKED ON SITE PRIOR TO ORDERING. MANUFACTURE OR INSTALLATION OF ITEMS
- 3 REFER TO SERVICES DOCUMENTATION FOR ELECTRICAL MECHANICAL AND HYDRAULIC SERVICES
- 4 REFER TO STRUCTURAL ENGINEERS DOCUMENTATION FOR STRUCTURAL ITEMS

Issue	Date
01 REVISED COLD HOUSE PROP	26/03/2024
02 REVISED DA	24/04/2024

MAITLAND BUTLER ARCHITECTS

office@maitlandbutler.com.au
108 Arcadia Rd, Arcadia NSW 2159
ABN 48027791946

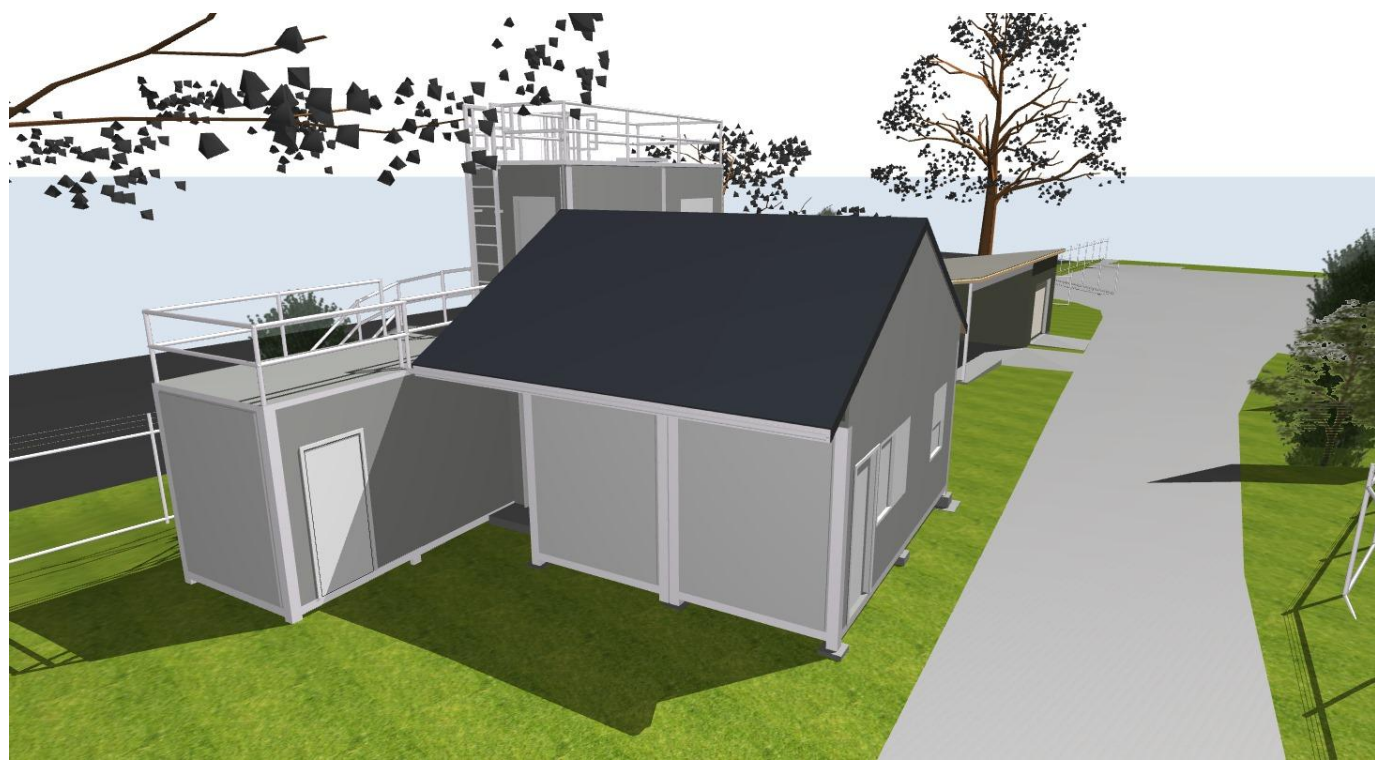
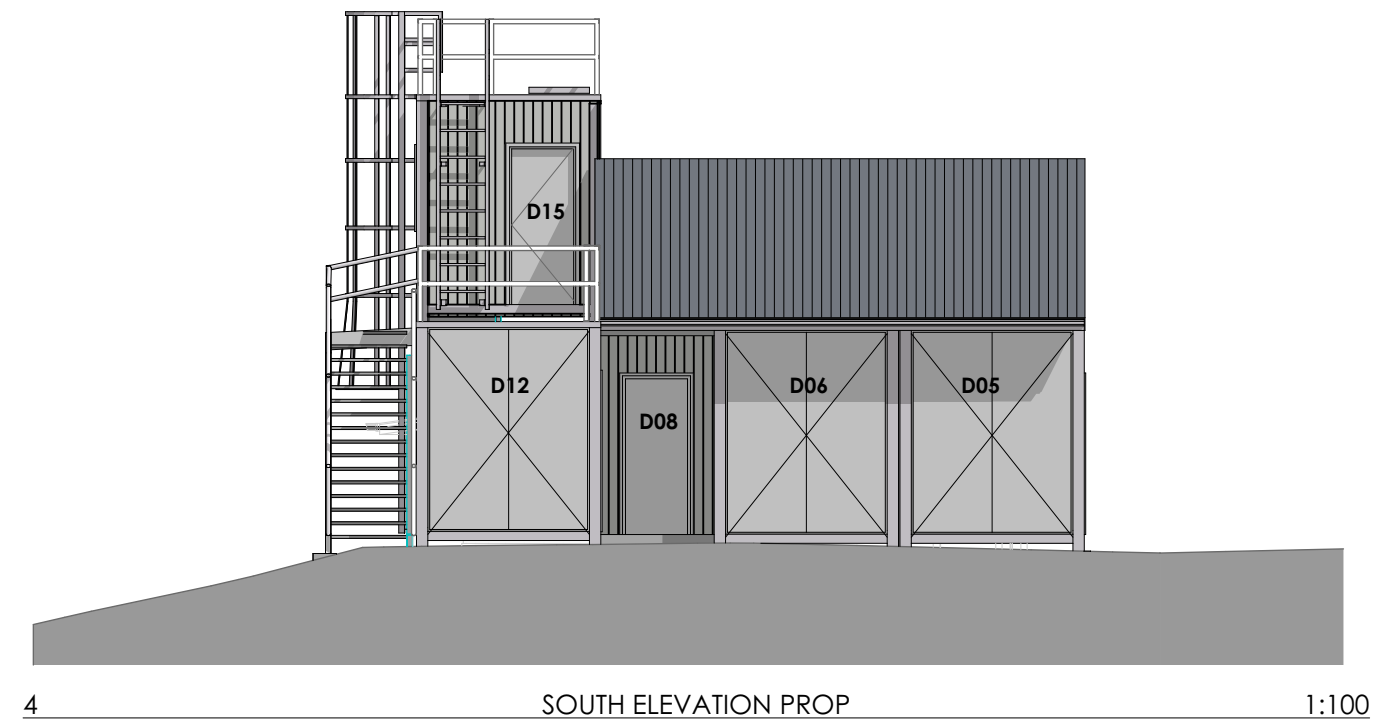
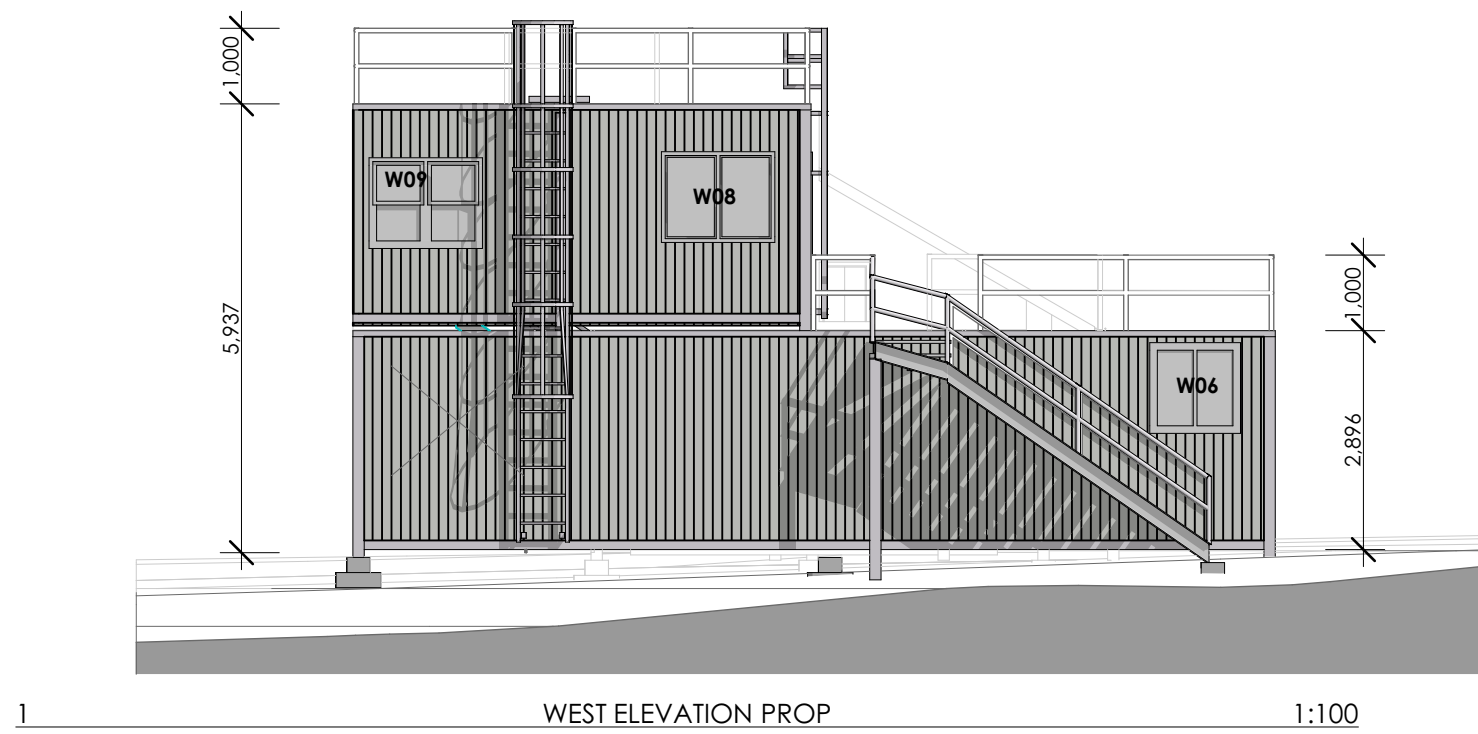


RFS TRAINING FACILITY
at
1049 Pacific Hwy Cowan, NSW 2081
for
NSW Rural Fire Service

Drawn
Scale
Drawing No.

COLD HOUSE PROP PLANS

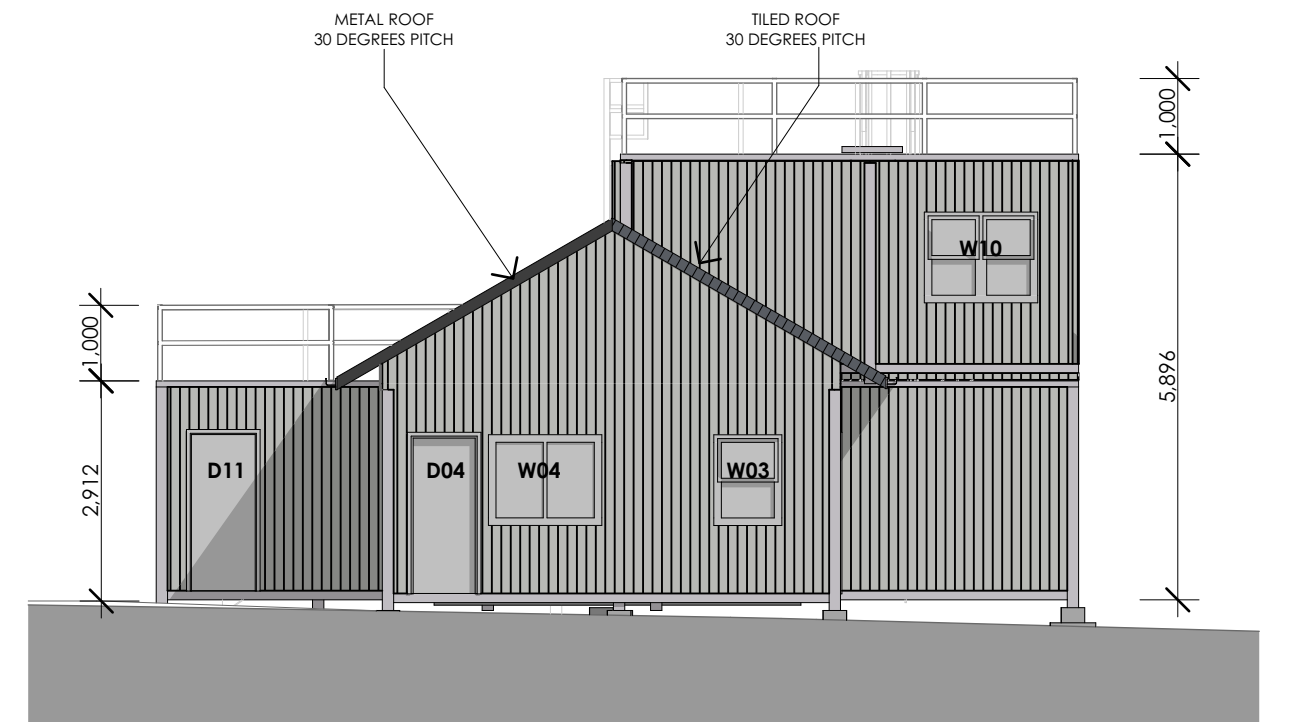
RB
1:100@A2
RFS03- E06



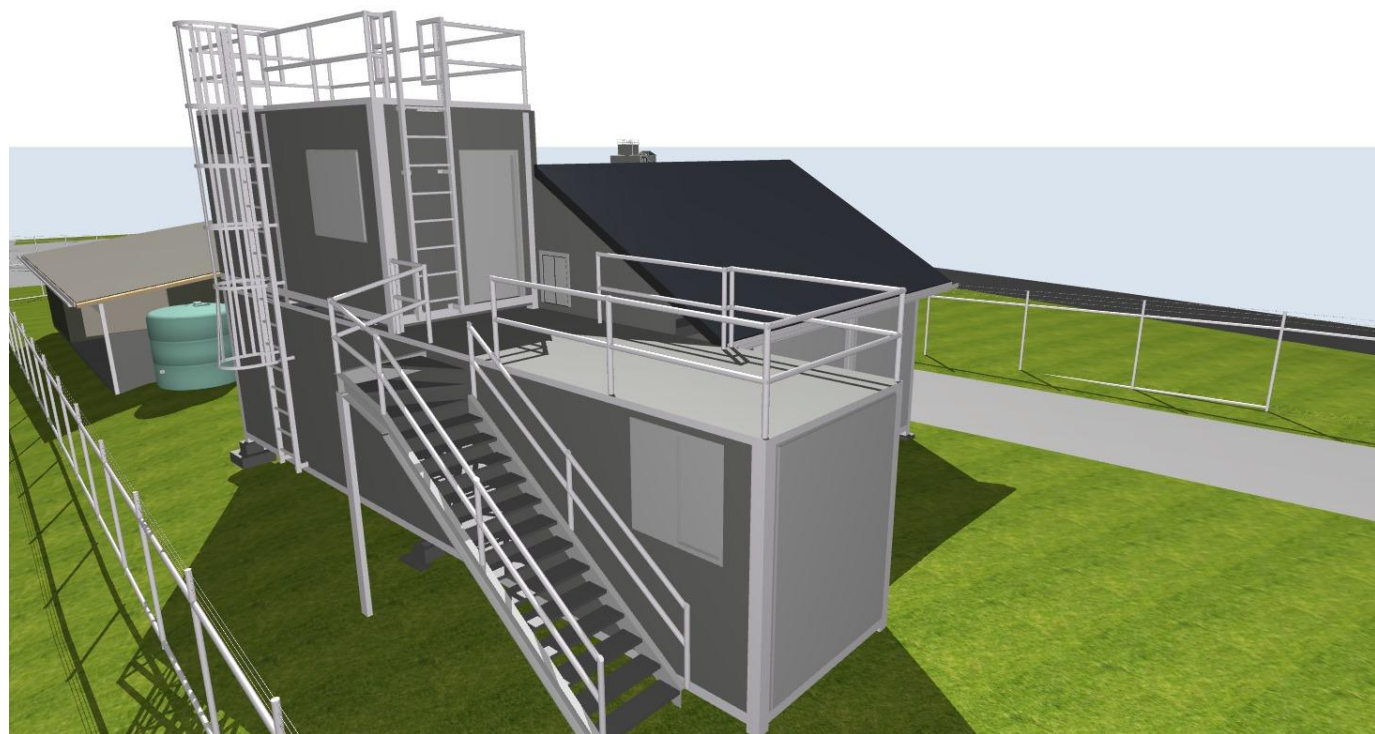
PROP VIEW 2



PROP VIEW 1



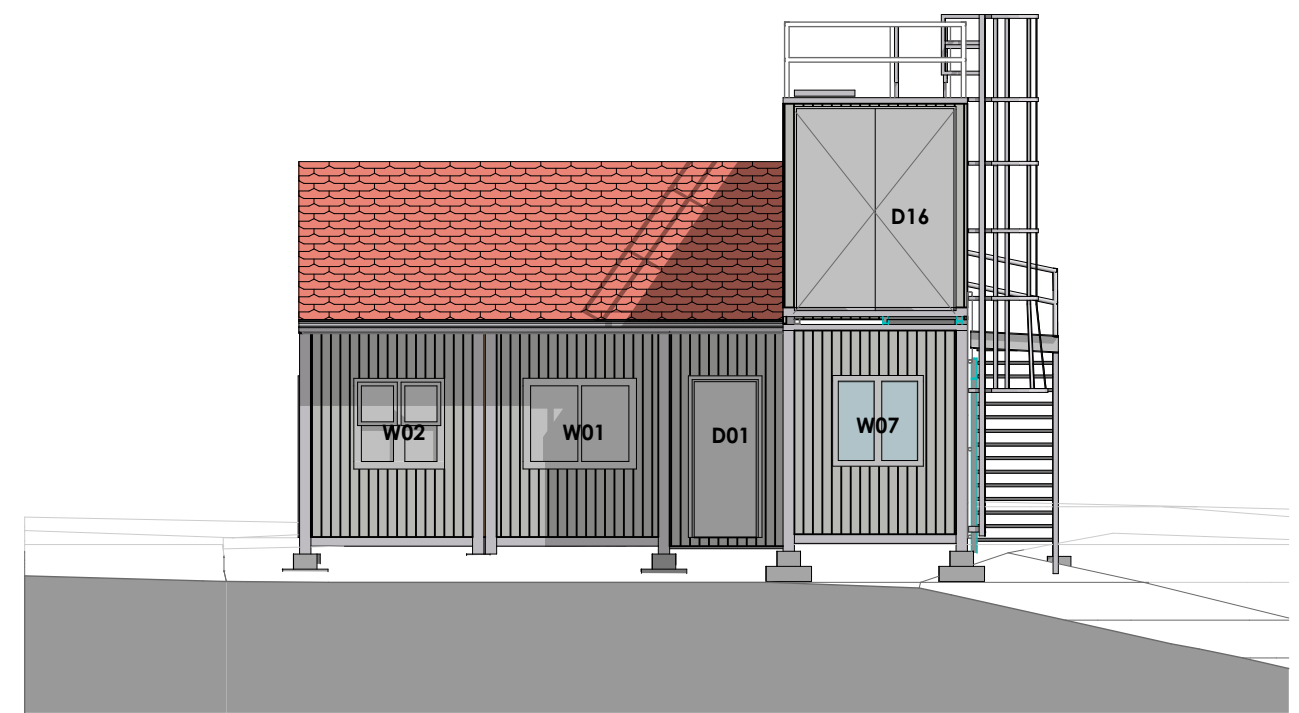
EAST ELEVATION PROP



PROP VIEW 3



PROP VIEW 4



NORTH ELEVATION PROP

Notes

- ALL WORK TO CONFORM TO THE BCA AND TO RELEVANT AUSTRALIAN STANDARDS
- ALL DIMENSIONS TO BE CHECKED ON SITE PRIOR TO ORDERING. MANUFACTURE OR INSTALLATION OF ITEMS
- REFER TO SERVICES DOCUMENTATION FOR ELECTRICAL MECHANICAL AND HYDRAULIC SERVICES
- REFER TO STRUCTURAL ENGINEERS DOCUMENTATION FOR STRUCTURAL ITEMS

Issue	Date
01 REVISED COLD HOUSE PROP	26/03/2024
02 REVISED DA	24/04/2024

MAITLAND BUTLER ARCHITECTS

office@mbaitlandbutler.com.au
108 Arcadia Rd, Arcadia NSW 2159
ABN 480027791346



(02) 9653 1037

RFS TRAINING FACILITY
at
1049 Pacific Hwy Cowan, NSW 2081
for
NSW Rural Fire Service

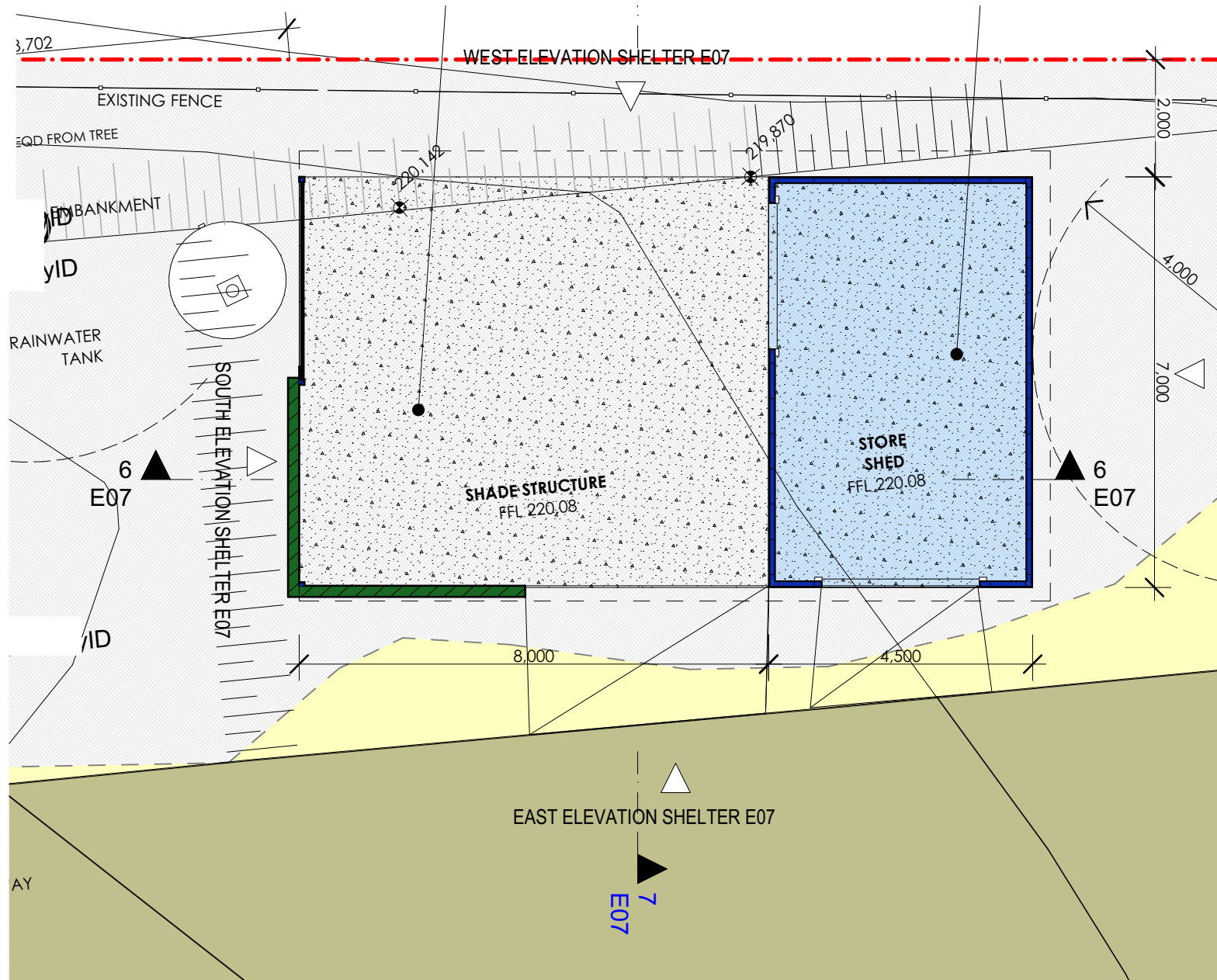
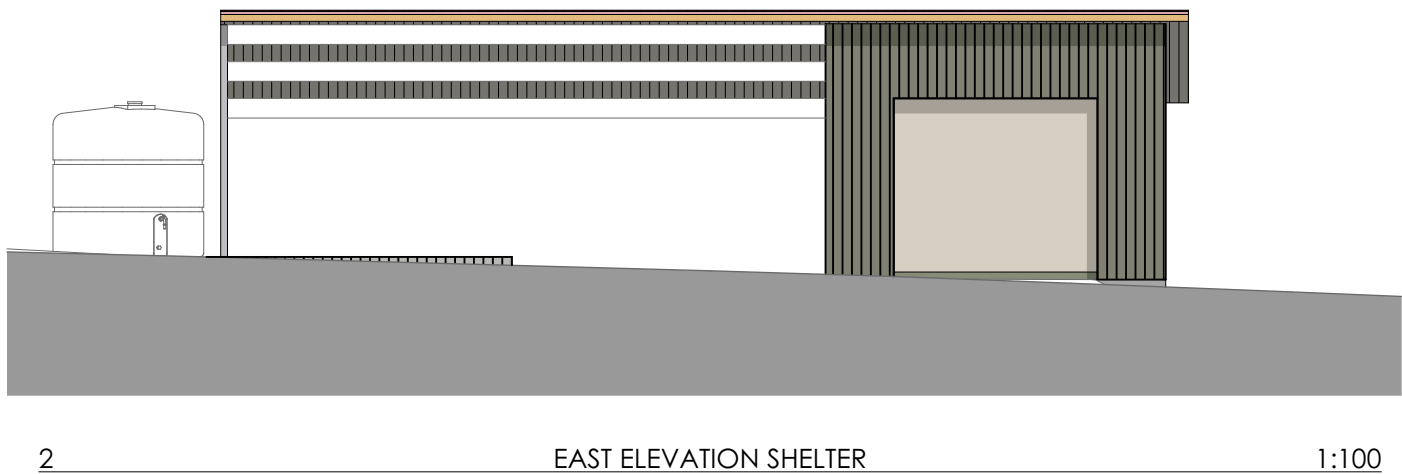
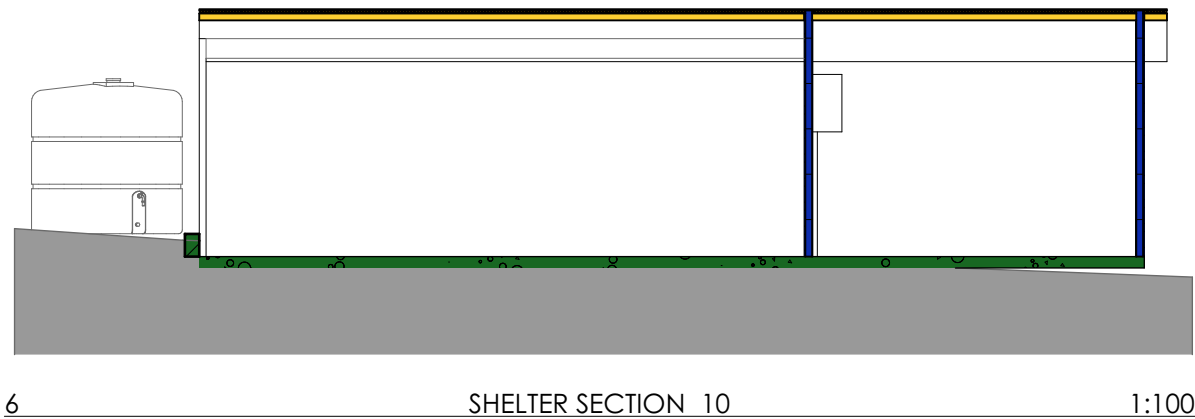
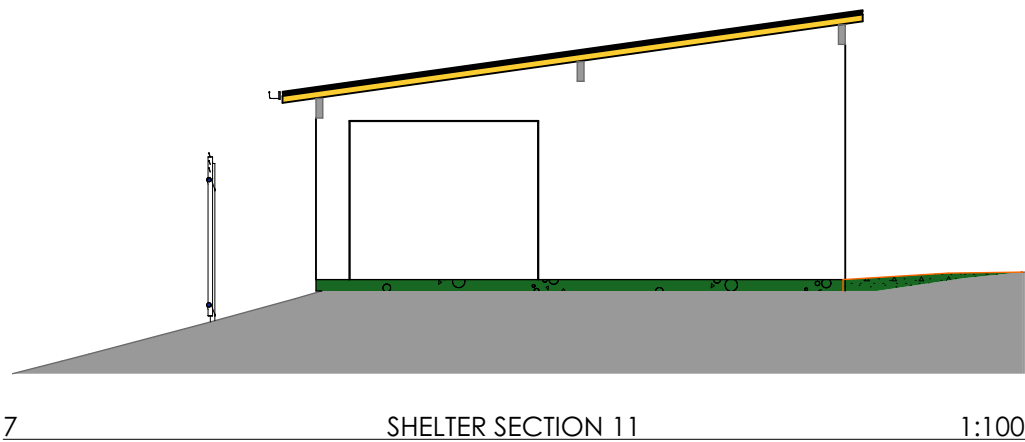
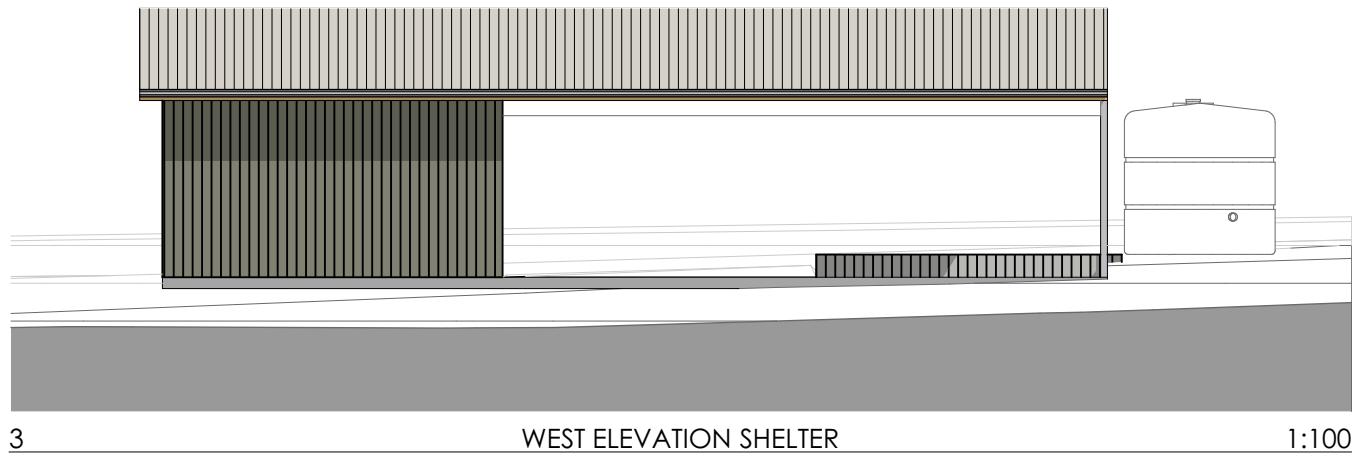
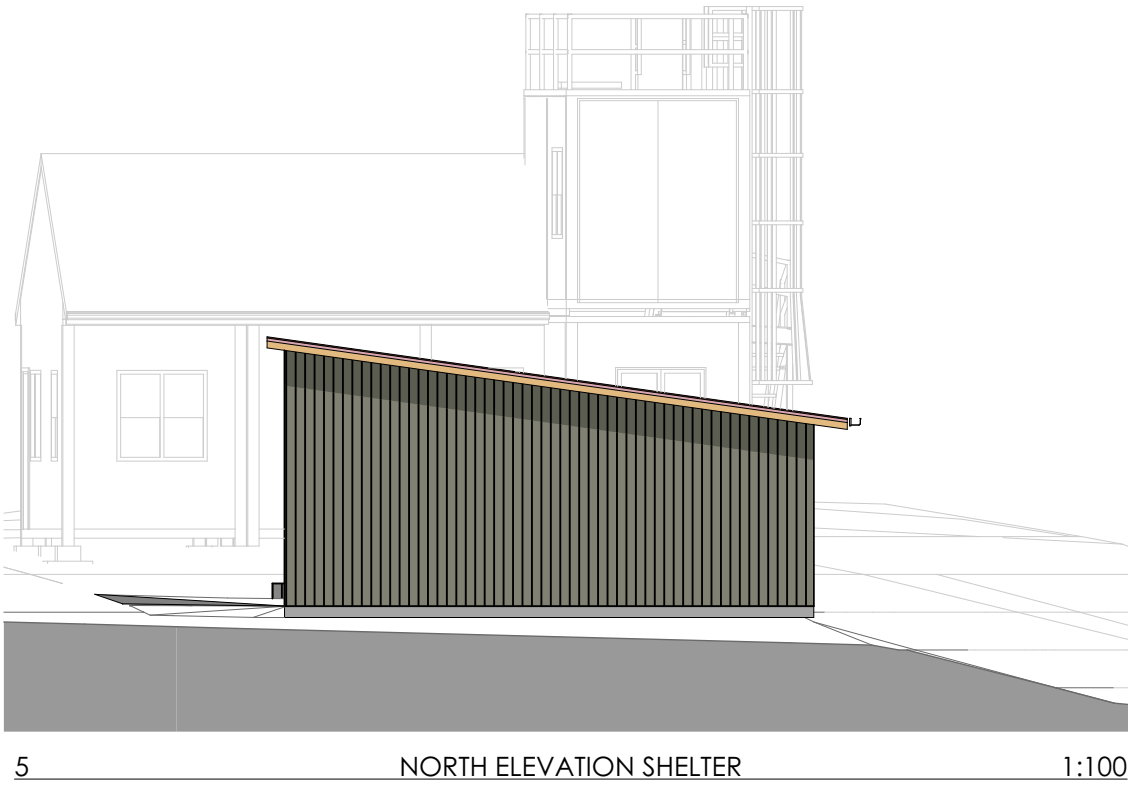
Drawn
Scale
Drawing No.

COLD HOUSE PROP ELEVATIONS

RB

1:100@A2

RFS03- E07



Notes

- ALL WORK TO COMFORM TO THE BCA AND TO RELEVANT AUSTRALIAN STANDARDS
- ALL DIMENSIONS TO BE CHECKED ON SITE PRIOR TO ORDERING. MANUFACTURE OR INSTALLATION OF ITEMS
- REFER TO SERVICES DOCUMENTATION FOR ELECTRICAL MECHANICAL AND HYDRAULIC SERVICES
- REFER TO STRUCTURAL ENGINEERS DOCUMENTATION FOR STRUCTURAL ITEMS

Issue	Date
01	REVISED DA

MAITLAND BUTLER ARCHITECTS

office@maitlandbutler.com.au
108 Arcadia Rd, Arcadia NSW 2159
ABN 48027791946



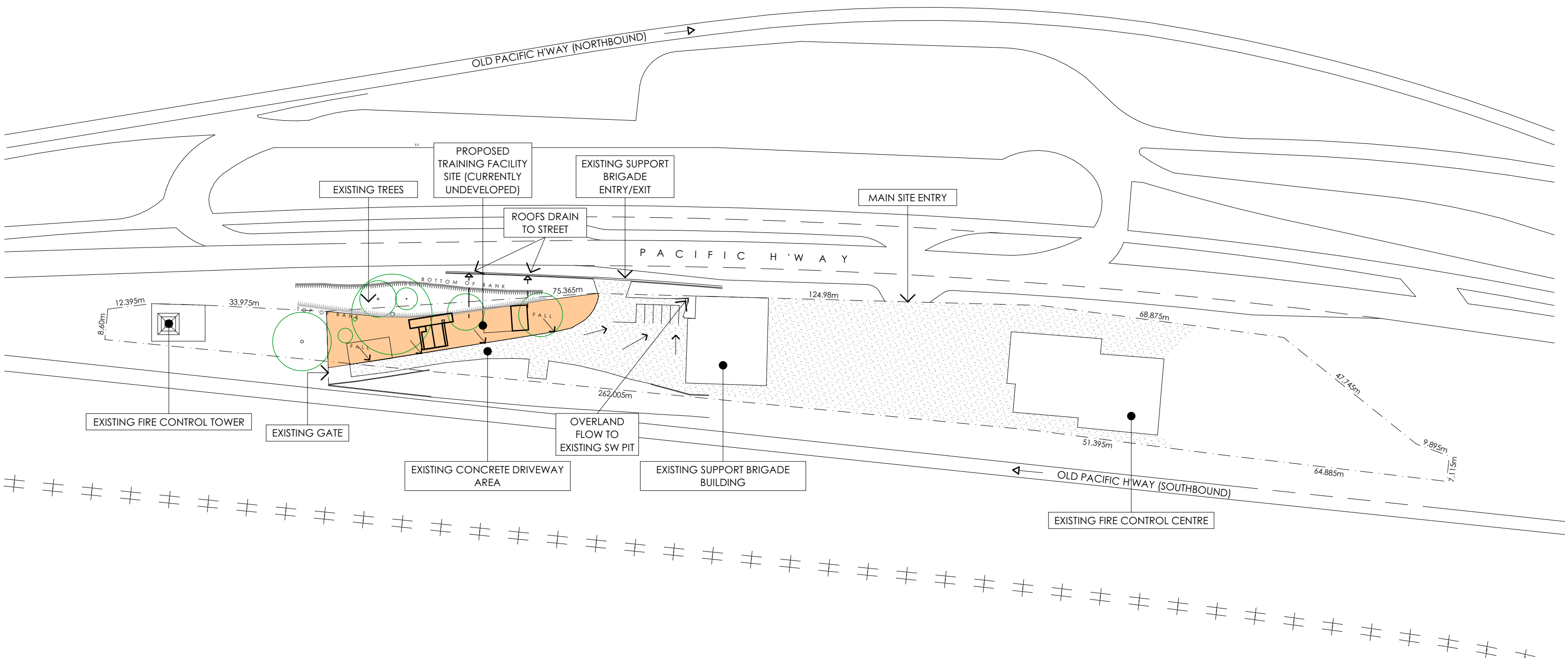
(02) 9653 1037

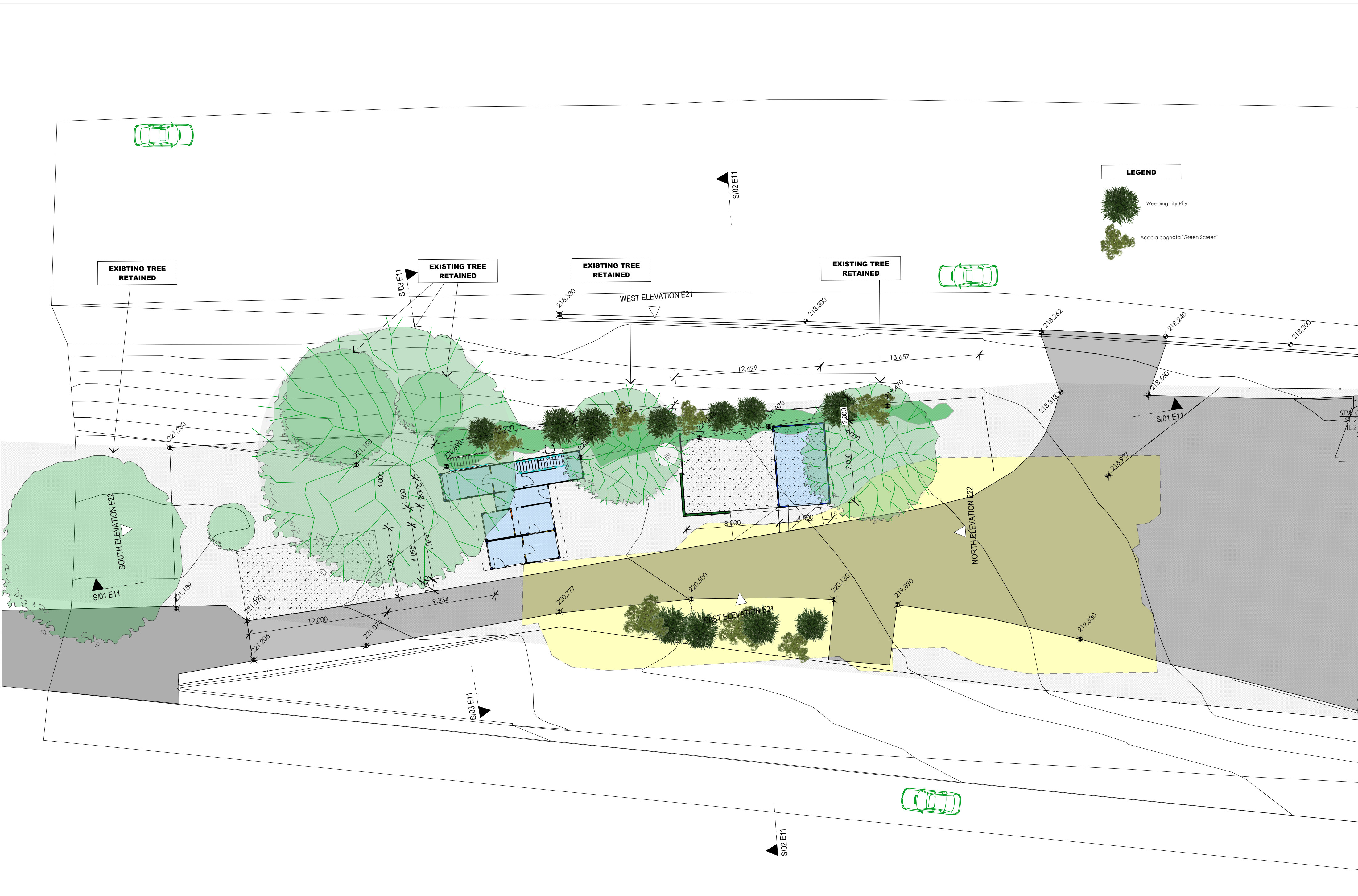
RFS TRAINING FACILITY
at
1049 Pacific Hwy Cowan, NSW 2081
for
NSW Rural Fire Service

Drawn
Scale
Drawing No.

STORAGE SHED_SHELTER PLAN

RB
1:100@A2
RFS03- E07





Notes

- 1 ALL WORK TO COMFORM TO THE BCA AND TO RELEVANT AUSTRALIAN STANDARDS
- 2 ALL DIMENSIONS TO BE CHECKED ON SITE PRIOR TO ORDERING. MANUFACTURE OR INSTALLATION OF ITEMS
- 3 REFER TO SERVICES DOCUMENTATION FOR ELECTRICAL MECHANICAL AND HYDRAULIC SERVICES
- 4 REFER TO STRUCTURAL ENGINEERS DOCUMENTATION FOR STRUCTURAL ITEMS

Issue	Date
01	REVISED DA
	24/04/2024

MAITLAND BUTLER ARCHITECTS

office@maitlandbutler.com.au
108 Arcadia Rd, Arcadia NSW 2159
ABN 48027791946

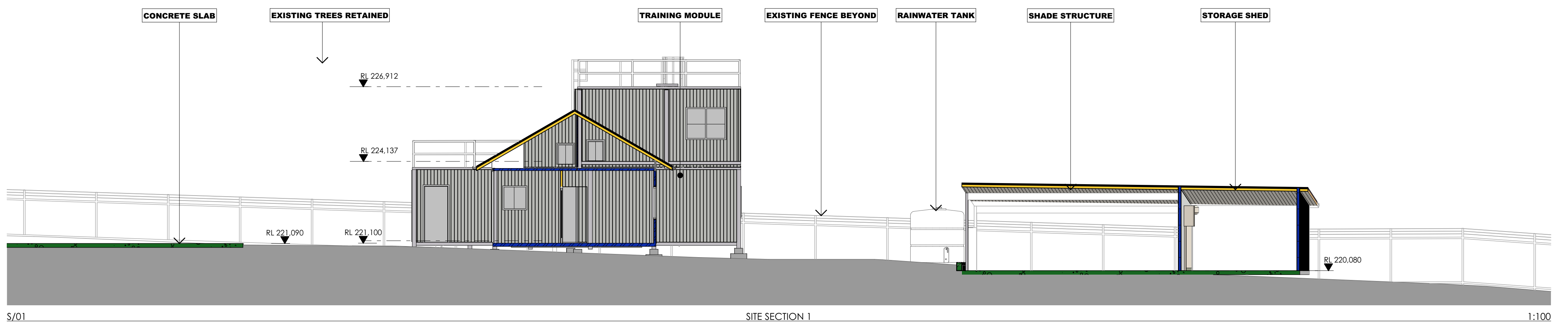
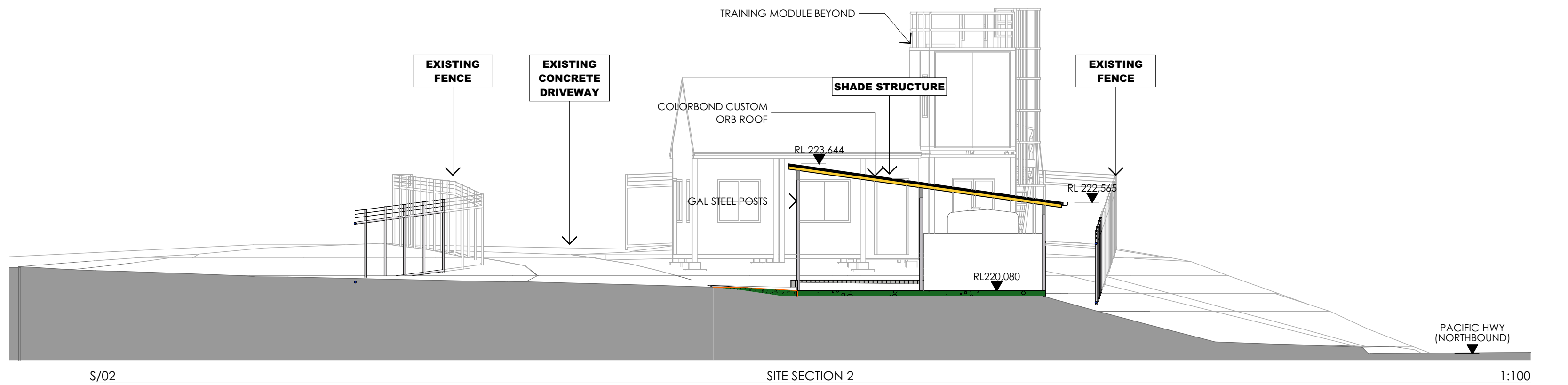
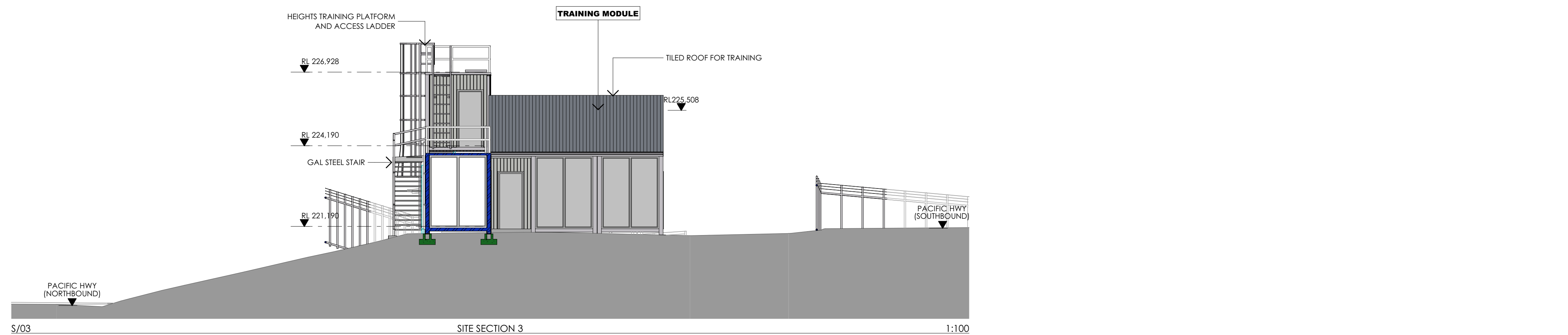


(02) 9653 1037

RFS TRAINING FACILITY
at
1049 Pacific Hwy Cowan, NSW 2081
for
NSW Rural Fire Service

Drawn
Scale
Drawing No.

Landscaping Plan
RB
1:200@A2
RFS03- E10



- Notes**
- 1 ALL WORK TO CONFORM TO THE BCA AND TO RELEVANT AUSTRALIAN STANDARDS
 - 2 ALL DIMENSIONS TO BE CHECKED ON SITE PRIOR TO ORDERING. MANUFACTURE OR INSTALLATION OF ITEMS
 - 3 REFER TO SERVICES DOCUMENTATION FOR ELECTRICAL MECHANICAL AND HYDRAULIC SERVICES
 - 4 REFER TO STRUCTURAL ENGINEERS DOCUMENTATION FOR STRUCTURAL ITEMS

Issue	Date
01 REVISED DA	24/04/2024

MAITLAND BUTLER ARCHITECTS
office@mbutlandbutler.com.au
108 Arcadia Rd, Arcadia NSW 2159
ABN 48027791946

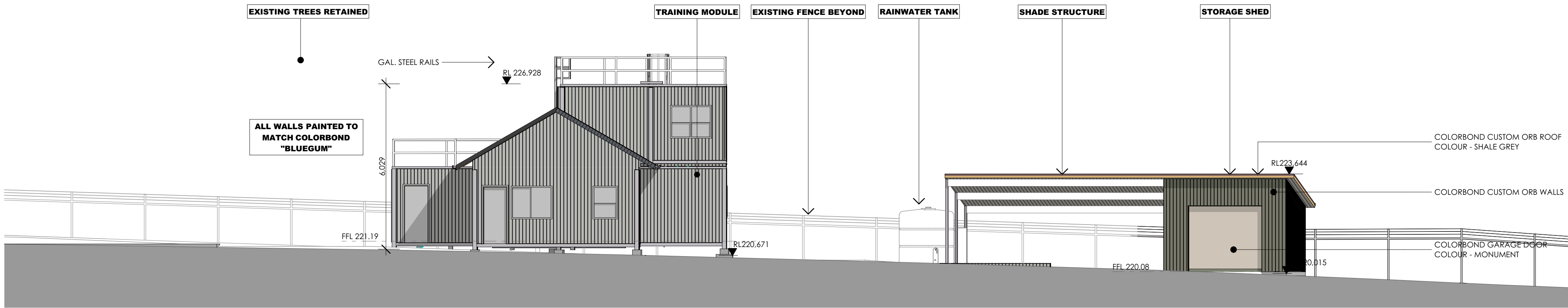


(02) 9653 1037

RFS TRAINING FACILITY
at
1049 Pacific Hwy Cowan, NSW 2081
for
NSW Rural Fire Service

Drawn
Scale
Drawing No.

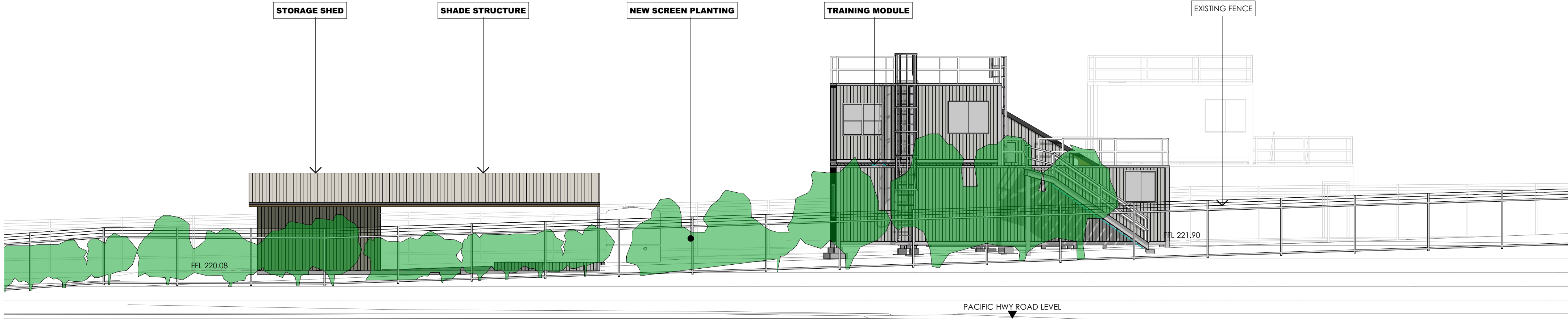
SECTIONS
RB
1:100@A2
RFS03- E11



E/03

EAST ELEVATION

1:100



E/01

WEST ELEVATION

1:100

Notes
1 ALL WORK TO COMFORM TO THE BCA AND TO RELEVANT AUSTRALIAN STANDARDS
2 ALL DIMENSIONS TO BE CHECKED ON SITE PRIOR TO ORDERING, MANUFACTURE OR INSTALLATION OF ITEMS
3 REFER TO SERVICES DOCUMENTATION FOR ELECTRICAL MECHANICAL AND HYDRAULIC SERVICES
4 REFER TO STRUCTURAL ENGINEERS DOCUMENTATION FOR STRUCTURAL ITEMS

Issue	Date
01 REVISED DA	24/04/2024

MAITLAND BUTLER ARCHITECTS

office@maitlandbutler.com.au
108 Arcadia Rd, Arcadia NSW 2159
ABN 48027791946



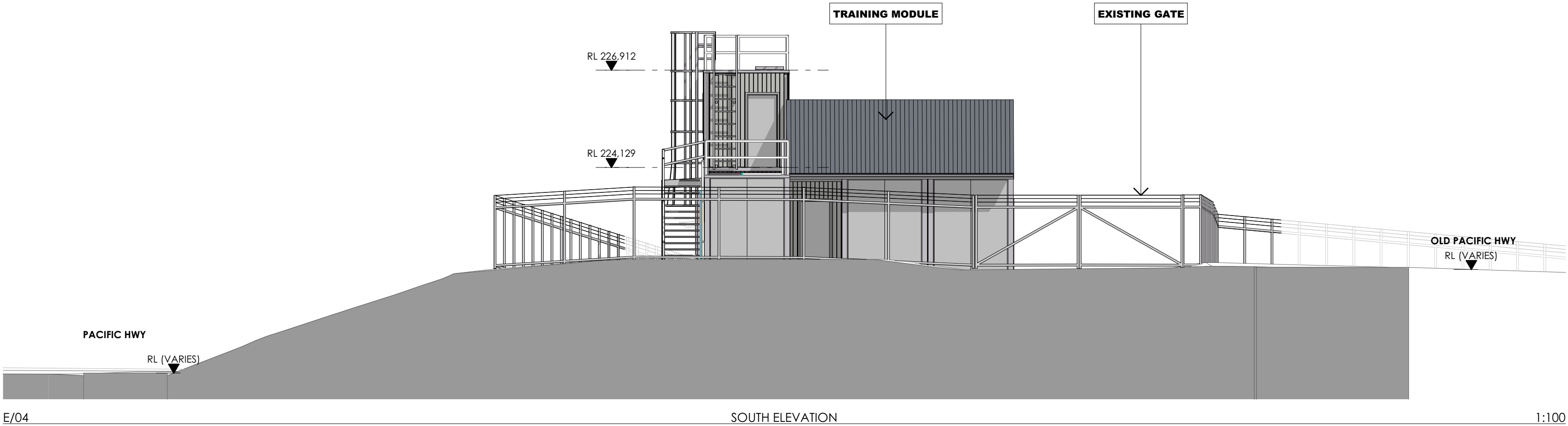
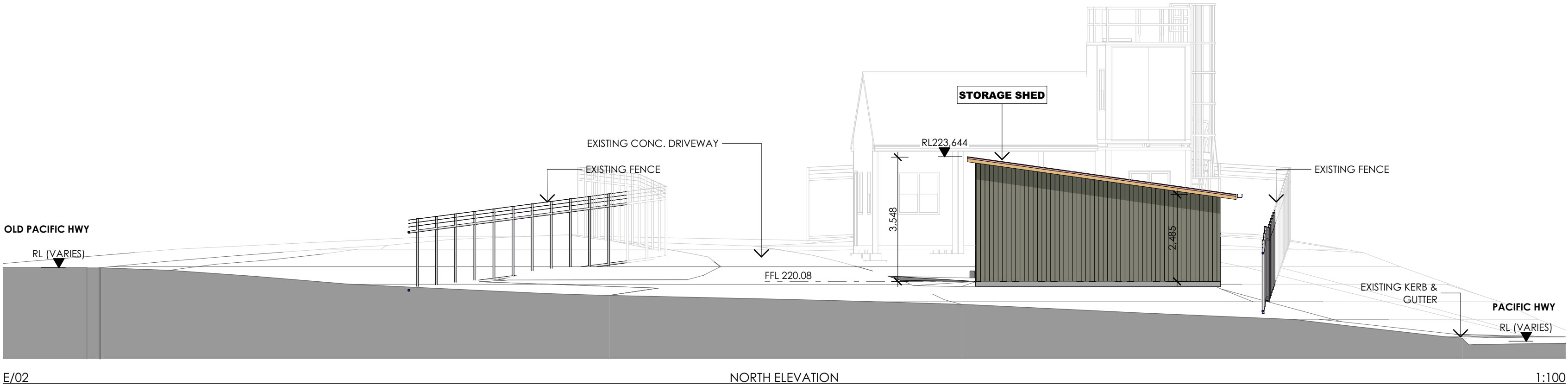
(02) 9653 1037

RFS TRAINING FACILITY
at
1049 Pacific Hwy Cowan, NSW 2081
for
NSW Rural Fire Service

Drawn
Scale
Drawing No.

ELEVATIONS 1
RB
1:100@A2
RFS03- E21

FINISHES SCHEDULE	
EXTERNAL WALLS	COLORBOND "BLUEGUM"
CONTAINER WALLS	COLORBOND "BLUEGUM"
FLOORS	SELECTED FINISH AS ON PLAN
ROOFS	COLORBOND "SHALE GREY"
POSTS & BEAMS	COLORBOND "MONUMENT"
DOORS	COLORBOND "MONUMENT"



- Notes**
- ALL WORK TO CONFORM TO THE BCA AND TO RELEVANT AUSTRALIAN STANDARDS
 - ALL DIMENSIONS TO BE CHECKED ON SITE PRIOR TO ORDERING, MANUFACTURE OR INSTALLATION OF ITEMS
 - REFER TO SERVICES DOCUMENTATION FOR ELECTRICAL MECHANICAL AND HYDRAULIC SERVICES
 - REFER TO STRUCTURAL ENGINEERS DOCUMENTATION FOR STRUCTURAL ITEMS

Issue		Date
01	REVISED DA	24/04/2024

MAITLAND BUTLER ARCHITECTS
 office@mbaitlandbutler.com.au
 108 Arcadia Rd, Arcadia NSW 2159
 ABN 48027791946



RFS TRAINING FACILITY
 at
 1049 Pacific Hwy Cowan, NSW 2081
 for
 NSW Rural Fire Service

Drawn
Scale
Drawing No.

ELEVATIONS 2
 RB
 1:100@A2
 RFS03- E22



AERIAL VIEW FROM NORTH



VIEW FROM PACIFIC HWY WEST SIDE NORTHBOUND



VIEW FROM PACIFIC HWY EAST SIDE



VIEW FROM PACIFIC HWY WEST SIDE SOUTHBOUND

Notes
1 ALL WORK TO CONFORM TO THE BCA AND TO RELEVANT AUSTRALIAN STANDARDS
2 ALL DIMENSIONS TO BE CHECKED ON SITE PRIOR TO ORDERING. MANUFACTURE OR INSTALLATION OF ITEMS
3 REFER TO SERVICES DOCUMENTATION FOR ELECTRICAL MECHANICAL AND HYDRAULIC SERVICES
4 REFER TO STRUCTURAL ENGINEERS DOCUMENTATION FOR STRUCTURAL ITEMS

Issue	Date
01 REVISED DA	24/04/2024

MAITLAND BUTLER ARCHITECTS
office@maitlandbutler.com.au
108 Arcadia Rd, Arcadia NSW 2159
ABN 48027791946



RFS TRAINING FACILITY
at
1049 Pacific Hwy Cowan, NSW 2081
for
NSW Rural Fire Service

Drawn
Scale
Drawing No.

VIEWS
RB
@A2
RFS03- E31



weeping-lilly-pilly



Acacia_cognata1



Landscaping view 1



Landscaping View 2

Notes
1 ALL WORK TO CONFORM TO THE BCA AND TO RELEVANT AUSTRALIAN STANDARDS
2 ALL DIMENSIONS TO BE CHECKED ON SITE PRIOR TO ORDERING. MANUFACTURE OR INSTALLATION OF ITEMS
3 REFER TO SERVICES DOCUMENTATION FOR ELECTRICAL MECHANICAL AND HYDRAULIC SERVICES
3 REFER TO STRUCTURAL ENGINEERS DOCUMENTATION FOR STRUCTURAL ITEMS

Issue	Date
01 REVISED DA	24/04/2024

MAITLAND BUTLER ARCHITECTS
office@mbutlandbutler.com.au
108 Arcadia Rd, Arcadia NSW 2159
ABN 48027791946



RFS TRAINING FACILITY
at
1049 Pacific Hwy Cowan, NSW 2081
for
NSW Rural Fire Service

Drawn
Scale
Drawing No.

LANDSCAPING VIEWS
RB
@A2
RFS03- E32