



Attachments

Local Planning Panel meeting

Wednesday 27 May 2026
at 4:00 PM



TABLE OF CONTENTS

LOCAL PLANNING PANEL

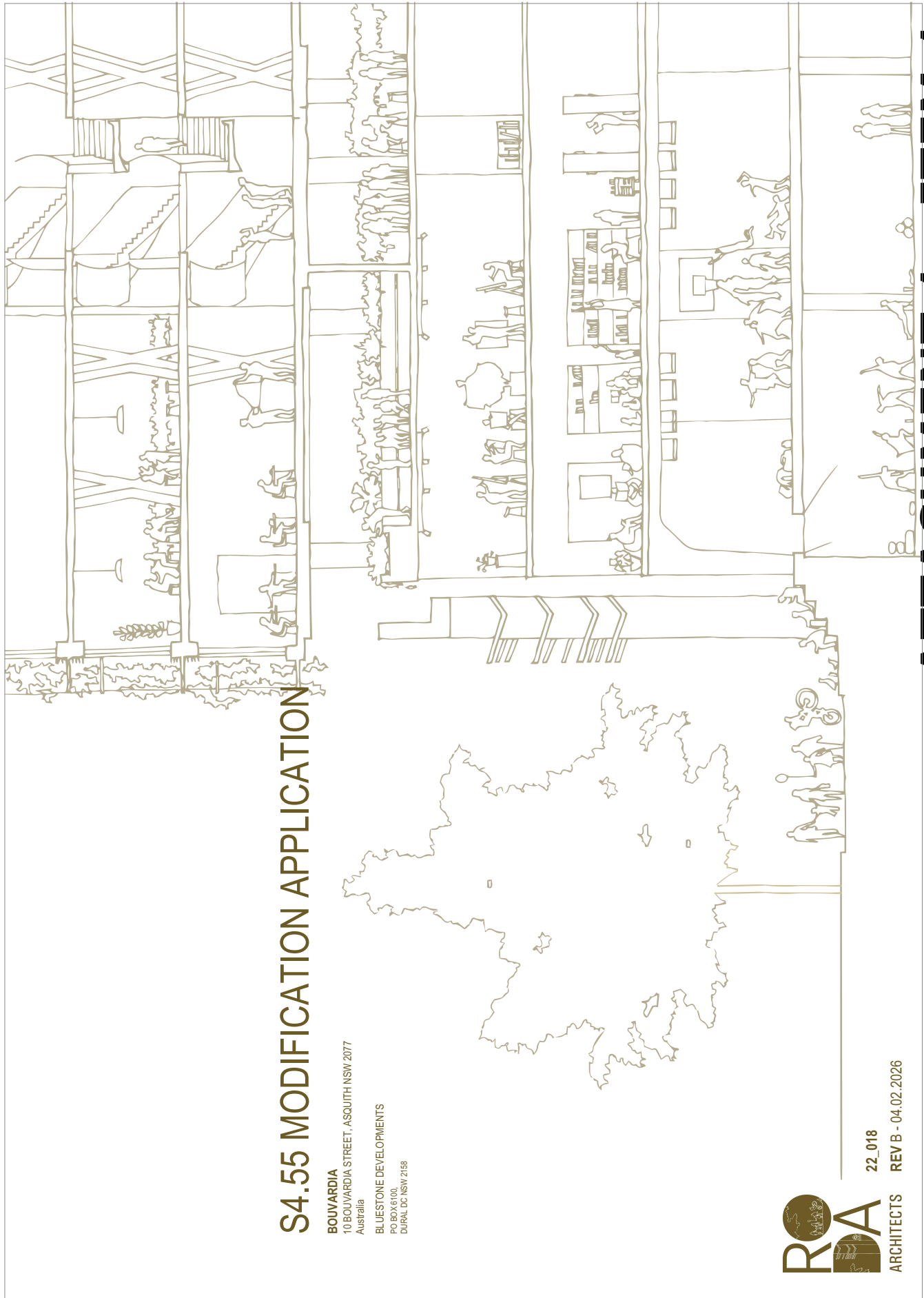
1	LPP12/26	DA/75/2023/E - Section 4.55(2) modification to add a 6 storey to an approved residential flat building - 10 Bouvardia Street, Asquith	
	Attachment 1:	Architectural Plans	2

ATTACHMENT/S

REPORT NO. LPP12/26

ITEM 1

1. ARCHITECTURAL PLANS



S4.55 MODIFICATION APPLICATION

BOUVARDIA
10 BOUVARDIA STREET, ASQUITH NSW 2077
Australia
BLUESTONE DEVELOPMENTS
PO BOX 6100
DURAL DC NSW 2158



22_018
REV B - 04.02.2026

ATTACHMENT 1 - ITEM 1

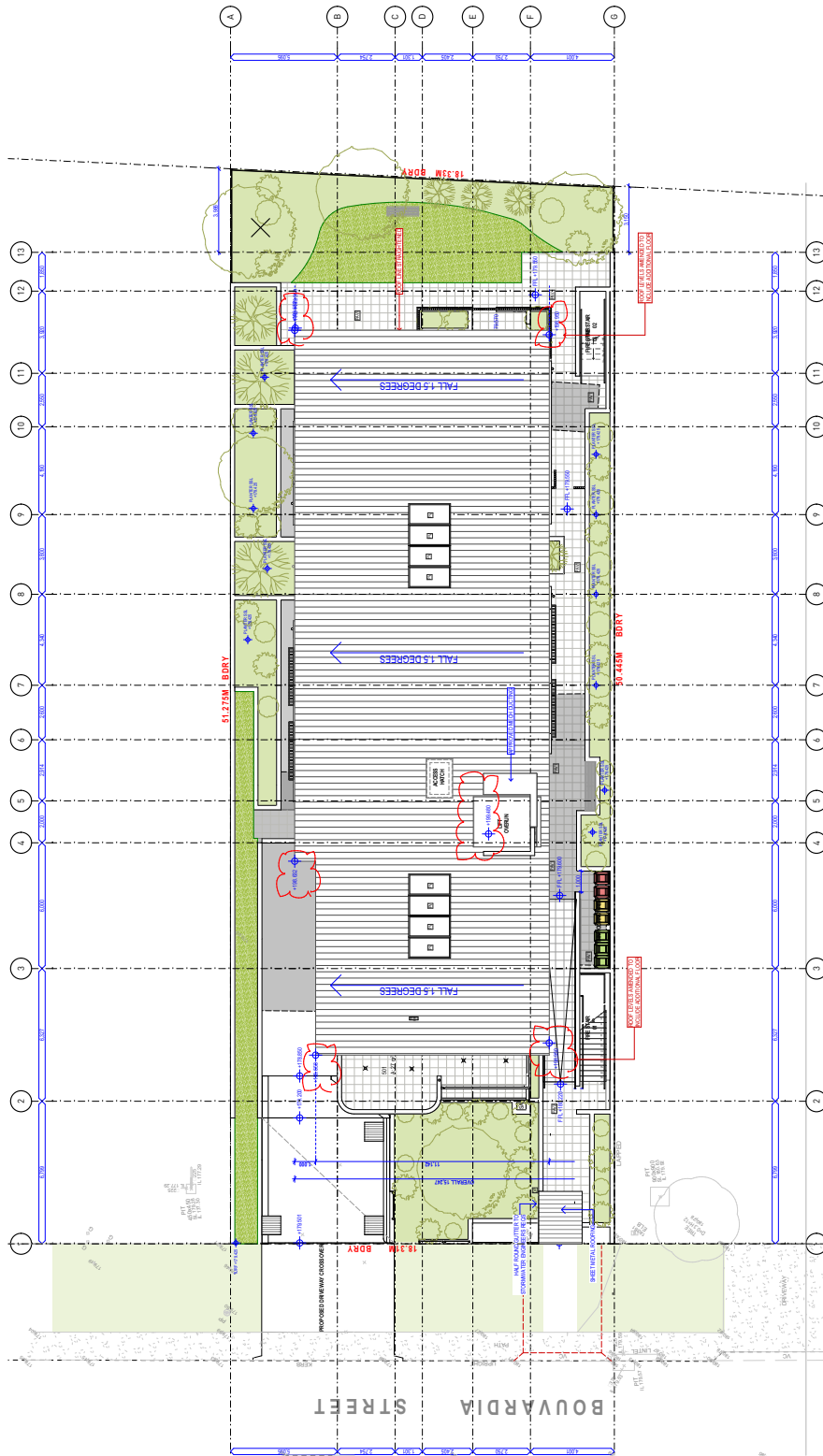
ATTACHMENT 1 - ITEM 1

- NOTE:**
1. NEVER scale drawings. Use figure dimensions only.
 2. Verify all dimensions on the prior to commencement & report.
 3. Drawings are to be scaled to match and general set out. These drawings are not to be used for construction purposes.
 4. The copyright of this design remains the property of R/OCA ARCHITECTS. This design is to be used, copied or reproduced only with the authority of R/OCA ARCHITECTS.
 5. This drawing is only to be used by the named client in the named project. It is not to be used for any other project or for any other contract or for any other design.
- LEGEND:**
- Refer to the notes regarding the legend for further notes and details.

SYMBOL LEGEND

4. WALLS
5. FLOORS
6. ROOFS
7. CEILING
8. FURNITURE
9. LIGHTING
10. GLASS
11. METALS
12. WOOD
13. PAINT
14. FINISHES
15. CLADDING
16. SCREENS
17. GLASS
18. METALS
19. WOOD
20. PAINT
21. FINISHES
22. CLADDING
23. SCREENS
24. GLASS
25. METALS
26. WOOD
27. PAINT
28. FINISHES
29. CLADDING
30. SCREENS
31. GLASS
32. METALS
33. WOOD
34. PAINT
35. FINISHES
36. CLADDING
37. SCREENS
38. GLASS
39. METALS
40. WOOD
41. PAINT
42. FINISHES
43. CLADDING
44. SCREENS
45. GLASS
46. METALS
47. WOOD
48. PAINT
49. FINISHES
50. CLADDING
51. SCREENS
52. GLASS
53. METALS
54. WOOD
55. PAINT
56. FINISHES
57. CLADDING
58. SCREENS
59. GLASS
60. METALS
61. WOOD
62. PAINT
63. FINISHES
64. CLADDING
65. SCREENS
66. GLASS
67. METALS
68. WOOD
69. PAINT
70. FINISHES
71. CLADDING
72. SCREENS
73. GLASS
74. METALS
75. WOOD
76. PAINT
77. FINISHES
78. CLADDING
79. SCREENS
80. GLASS
81. METALS
82. WOOD
83. PAINT
84. FINISHES
85. CLADDING
86. SCREENS
87. GLASS
88. METALS
89. WOOD
90. PAINT
91. FINISHES
92. CLADDING
93. SCREENS
94. GLASS
95. METALS
96. WOOD
97. PAINT
98. FINISHES
99. CLADDING
100. SCREENS
101. GLASS
102. METALS
103. WOOD
104. PAINT
105. FINISHES
106. CLADDING
107. SCREENS
108. GLASS
109. METALS
110. WOOD
111. PAINT
112. FINISHES
113. CLADDING
114. SCREENS
115. GLASS
116. METALS
117. WOOD
118. PAINT
119. FINISHES
120. CLADDING
121. SCREENS
122. GLASS
123. METALS
124. WOOD
125. PAINT
126. FINISHES
127. CLADDING
128. SCREENS
129. GLASS
130. METALS
131. WOOD
132. PAINT
133. FINISHES
134. CLADDING
135. SCREENS
136. GLASS
137. METALS
138. WOOD
139. PAINT
140. FINISHES
141. CLADDING
142. SCREENS
143. GLASS
144. METALS
145. WOOD
146. PAINT
147. FINISHES
148. CLADDING
149. SCREENS
150. GLASS
151. METALS
152. WOOD
153. PAINT
154. FINISHES
155. CLADDING
156. SCREENS
157. GLASS
158. METALS
159. WOOD
160. PAINT
161. FINISHES
162. CLADDING
163. SCREENS
164. GLASS
165. METALS
166. WOOD
167. PAINT
168. FINISHES
169. CLADDING
170. SCREENS
171. GLASS
172. METALS
173. WOOD
174. PAINT
175. FINISHES
176. CLADDING
177. SCREENS
178. GLASS
179. METALS
180. WOOD
181. PAINT
182. FINISHES
183. CLADDING
184. SCREENS
185. GLASS
186. METALS
187. WOOD
188. PAINT
189. FINISHES
190. CLADDING
191. SCREENS
192. GLASS
193. METALS
194. WOOD
195. PAINT
196. FINISHES
197. CLADDING
198. SCREENS
199. GLASS
200. METALS
201. WOOD
202. PAINT
203. FINISHES
204. CLADDING
205. SCREENS
206. GLASS
207. METALS
208. WOOD
209. PAINT
210. FINISHES
211. CLADDING
212. SCREENS
213. GLASS
214. METALS
215. WOOD
216. PAINT
217. FINISHES
218. CLADDING
219. SCREENS
220. GLASS
221. METALS
222. WOOD
223. PAINT
224. FINISHES
225. CLADDING
226. SCREENS
227. GLASS
228. METALS
229. WOOD
230. PAINT
231. FINISHES
232. CLADDING
233. SCREENS
234. GLASS
235. METALS
236. WOOD
237. PAINT
238. FINISHES
239. CLADDING
240. SCREENS
241. GLASS
242. METALS
243. WOOD
244. PAINT
245. FINISHES
246. CLADDING
247. SCREENS
248. GLASS
249. METALS
250. WOOD
251. PAINT
252. FINISHES
253. CLADDING
254. SCREENS
255. GLASS
256. METALS
257. WOOD
258. PAINT
259. FINISHES
260. CLADDING
261. SCREENS
262. GLASS
263. METALS
264. WOOD
265. PAINT
266. FINISHES
267. CLADDING
268. SCREENS
269. GLASS
270. METALS
271. WOOD
272. PAINT
273. FINISHES
274. CLADDING
275. SCREENS
276. GLASS
277. METALS
278. WOOD
279. PAINT
280. FINISHES
281. CLADDING
282. SCREENS
283. GLASS
284. METALS
285. WOOD
286. PAINT
287. FINISHES
288. CLADDING
289. SCREENS
290. GLASS
291. METALS
292. WOOD
293. PAINT
294. FINISHES
295. CLADDING
296. SCREENS
297. GLASS
298. METALS
299. WOOD
300. PAINT
301. FINISHES
302. CLADDING
303. SCREENS
304. GLASS
305. METALS
306. WOOD
307. PAINT
308. FINISHES
309. CLADDING
310. SCREENS
311. GLASS
312. METALS
313. WOOD
314. PAINT
315. FINISHES
316. CLADDING
317. SCREENS
318. GLASS
319. METALS
320. WOOD
321. PAINT
322. FINISHES
323. CLADDING
324. SCREENS
325. GLASS
326. METALS
327. WOOD
328. PAINT
329. FINISHES
330. CLADDING
331. SCREENS
332. GLASS
333. METALS
334. WOOD
335. PAINT
336. FINISHES
337. CLADDING
338. SCREENS
339. GLASS
340. METALS
341. WOOD
342. PAINT
343. FINISHES
344. CLADDING
345. SCREENS
346. GLASS
347. METALS
348. WOOD
349. PAINT
350. FINISHES
351. CLADDING
352. SCREENS
353. GLASS
354. METALS
355. WOOD
356. PAINT
357. FINISHES
358. CLADDING
359. SCREENS
360. GLASS
361. METALS
362. WOOD
363. PAINT
364. FINISHES
365. CLADDING
366. SCREENS
367. GLASS
368. METALS
369. WOOD
370. PAINT
371. FINISHES
372. CLADDING
373. SCREENS
374. GLASS
375. METALS
376. WOOD
377. PAINT
378. FINISHES
379. CLADDING
380. SCREENS
381. GLASS
382. METALS
383. WOOD
384. PAINT
385. FINISHES
386. CLADDING
387. SCREENS
388. GLASS
389. METALS
390. WOOD
391. PAINT
392. FINISHES
393. CLADDING
394. SCREENS
395. GLASS
396. METALS
397. WOOD
398. PAINT
399. FINISHES
400. CLADDING
401. SCREENS
402. GLASS
403. METALS
404. WOOD
405. PAINT
406. FINISHES
407. CLADDING
408. SCREENS
409. GLASS
410. METALS
411. WOOD
412. PAINT
413. FINISHES
414. CLADDING
415. SCREENS
416. GLASS
417. METALS
418. WOOD
419. PAINT
420. FINISHES
421. CLADDING
422. SCREENS
423. GLASS
424. METALS
425. WOOD
426. PAINT
427. FINISHES
428. CLADDING
429. SCREENS
430. GLASS
431. METALS
432. WOOD
433. PAINT
434. FINISHES
435. CLADDING
436. SCREENS
437. GLASS
438. METALS
439. WOOD
440. PAINT
441. FINISHES
442. CLADDING
443. SCREENS
444. GLASS
445. METALS
446. WOOD
447. PAINT
448. FINISHES
449. CLADDING
450. SCREENS
451. GLASS
452. METALS
453. WOOD
454. PAINT
455. FINISHES
456. CLADDING
457. SCREENS
458. GLASS
459. METALS
460. WOOD
461. PAINT
462. FINISHES
463. CLADDING
464. SCREENS
465. GLASS
466. METALS
467. WOOD
468. PAINT
469. FINISHES
470. CLADDING
471. SCREENS
472. GLASS
473. METALS
474. WOOD
475. PAINT
476. FINISHES
477. CLADDING
478. SCREENS
479. GLASS
480. METALS
481. WOOD
482. PAINT
483. FINISHES
484. CLADDING
485. SCREENS
486. GLASS
487. METALS
488. WOOD
489. PAINT
490. FINISHES
491. CLADDING
492. SCREENS
493. GLASS
494. METALS
495. WOOD
496. PAINT
497. FINISHES
498. CLADDING
499. SCREENS
500. GLASS
501. METALS
502. WOOD
503. PAINT
504. FINISHES
505. CLADDING
506. SCREENS
507. GLASS
508. METALS
509. WOOD
510. PAINT
511. FINISHES
512. CLADDING
513. SCREENS
514. GLASS
515. METALS
516. WOOD
517. PAINT
518. FINISHES
519. CLADDING
520. SCREENS
521. GLASS
522. METALS
523. WOOD
524. PAINT
525. FINISHES
526. CLADDING
527. SCREENS
528. GLASS
529. METALS
530. WOOD
531. PAINT
532. FINISHES
533. CLADDING
534. SCREENS
535. GLASS
536. METALS
537. WOOD
538. PAINT
539. FINISHES
540. CLADDING
541. SCREENS
542. GLASS
543. METALS
544. WOOD
545. PAINT
546. FINISHES
547. CLADDING
548. SCREENS
549. GLASS
550. METALS
551. WOOD
552. PAINT
553. FINISHES
554. CLADDING
555. SCREENS
556. GLASS
557. METALS
558. WOOD
559. PAINT
560. FINISHES
561. CLADDING
562. SCREENS
563. GLASS
564. METALS
565. WOOD
566. PAINT
567. FINISHES
568. CLADDING
569. SCREENS
570. GLASS
571. METALS
572. WOOD
573. PAINT
574. FINISHES
575. CLADDING
576. SCREENS
577. GLASS
578. METALS
579. WOOD
580. PAINT
581. FINISHES
582. CLADDING
583. SCREENS
584. GLASS
585. METALS
586. WOOD
587. PAINT
588. FINISHES
589. CLADDING
590. SCREENS
591. GLASS
592. METALS
593. WOOD
594. PAINT
595. FINISHES
596. CLADDING
597. SCREENS
598. GLASS
599. METALS
600. WOOD
601. PAINT
602. FINISHES
603. CLADDING
604. SCREENS
605. GLASS
606. METALS
607. WOOD
608. PAINT
609. FINISHES
610. CLADDING
611. SCREENS
612. GLASS
613. METALS
614. WOOD
615. PAINT
616. FINISHES
617. CLADDING
618. SCREENS
619. GLASS
620. METALS
621. WOOD
622. PAINT
623. FINISHES
624. CLADDING
625. SCREENS
626. GLASS
627. METALS
628. WOOD
629. PAINT
630. FINISHES
631. CLADDING
632. SCREENS
633. GLASS
634. METALS
635. WOOD
636. PAINT
637. FINISHES
638. CLADDING
639. SCREENS
640. GLASS
641. METALS
642. WOOD
643. PAINT
644. FINISHES
645. CLADDING
646. SCREENS
647. GLASS
648. METALS
649. WOOD
650. PAINT
651. FINISHES
652. CLADDING
653. SCREENS
654. GLASS
655. METALS
656. WOOD
657. PAINT
658. FINISHES
659. CLADDING
660. SCREENS
661. GLASS
662. METALS
663. WOOD
664. PAINT
665. FINISHES
666. CLADDING
667. SCREENS
668. GLASS
669. METALS
670. WOOD
671. PAINT
672. FINISHES
673. CLADDING
674. SCREENS
675. GLASS
676. METALS
677. WOOD
678. PAINT
679. FINISHES
680. CLADDING
681. SCREENS
682. GLASS
683. METALS
684. WOOD
685. PAINT
686. FINISHES
687. CLADDING
688. SCREENS
689. GLASS
690. METALS
691. WOOD
692. PAINT
693. FINISHES
694. CLADDING
695. SCREENS
696. GLASS
697. METALS
698. WOOD
699. PAINT
700. FINISHES
701. CLADDING
702. SCREENS
703. GLASS
704. METALS
705. WOOD
706. PAINT
707. FINISHES
708. CLADDING
709. SCREENS
710. GLASS
711. METALS
712. WOOD
713. PAINT
714. FINISHES
715. CLADDING
716. SCREENS
717. GLASS
718. METALS
719. WOOD
720. PAINT
721. FINISHES
722. CLADDING
723. SCREENS
724. GLASS
725. METALS
726. WOOD
727. PAINT
728. FINISHES
729. CLADDING
730. SCREENS
731. GLASS
732. METALS
733. WOOD
734. PAINT
735. FINISHES
736. CLADDING
737. SCREENS
738. GLASS
739. METALS
740. WOOD
741. PAINT
742. FINISHES
743. CLADDING
744. SCREENS
745. GLASS
746. METALS
747. WOOD
748. PAINT
749. FINISHES
750. CLADDING
751. SCREENS
752. GLASS
753. METALS
754. WOOD
755. PAINT
756. FINISHES
757. CLADDING
758. SCREENS
759. GLASS
760. METALS
761. WOOD
762. PAINT
763. FINISHES
764. CLADDING
765. SCREENS
766. GLASS
767. METALS
768. WOOD
769. PAINT
770. FINISHES
771. CLADDING
772. SCREENS
773. GLASS
774. METALS
775. WOOD
776. PAINT
777. FINISHES
778. CLADDING
779. SCREENS
780. GLASS
781. METALS
782. WOOD
783. PAINT
784. FINISHES
785. CLADDING
786. SCREENS
787. GLASS
788. METALS
789. WOOD
790. PAINT
791. FINISHES
792. CLADDING
793. SCREENS
794. GLASS
795. METALS
796. WOOD
797. PAINT
798. FINISHES
799. CLADDING
800. SCREENS
801. GLASS
802. METALS
803. WOOD
804. PAINT
805. FINISHES
806. CLADDING
807. SCREENS
808. GLASS
809. METALS
810. WOOD
811. PAINT
812. FINISHES
813. CLADDING
814. SCREENS
815. GLASS
816. METALS
817. WOOD
818. PAINT
819. FINISHES
820. CLADDING
821. SCREENS
822. GLASS
823. METALS
824. WOOD
825. PAINT
826. FINISHES
827. CLADDING
828. SCREENS
829. GLASS
830. METALS
831. WOOD
832. PAINT
833. FINISHES
834. CLADDING
835. SCREENS
836. GLASS
837. METALS
838. WOOD
839. PAINT
840. FINISHES
841. CLADDING
842. SCREENS
843. GLASS
844. METALS
845. WOOD
846. PAINT
847. FINISHES
848. CLADDING
849. SCREENS
850. GLASS
851. METALS
852. WOOD
853. PAINT
854. FINISHES
855. CLADDING
856. SCREENS
857. GLASS
858. METALS
859. WOOD
860. PAINT
861. FINISHES
862. CLADDING
863. SCREENS
864. GLASS
865. METALS
866. WOOD
867. PAINT
868. FINISHES
869. CLADDING
870. SCREENS
871. GLASS
872. METALS
873. WOOD
874. PAINT
875. FINISHES
876. CLADDING
877. SCREENS
878. GLASS
879. METALS
880. WOOD
881. PAINT
882. FINISHES
883. CLADDING
884. SCREENS
885. GLASS
886. METALS
887. WOOD
888. PAINT
889. FINISHES
890. CLADDING
891. SCREENS
892. GLASS
893. METALS
894. WOOD
895. PAINT
896. FINISHES
897. CLADDING
898. SCREENS
899. GLASS
900. METALS
901. WOOD
902. PAINT
903. FINISHES
904. CLADDING
905. SCREENS
906. GLASS
907. METALS
908. WOOD
909. PAINT
910. FINISHES
911. CLADDING
912. SCREENS
913. GLASS
914. METALS
915. WOOD
916. PAINT
917. FINISHES
918. CLADDING
919. SCREENS
920. GLASS
921. METALS
922. WOOD
923. PAINT
924. FINISHES
925. CLADDING
926. SCREENS
927. GLASS
928. METALS
929. WOOD
930. PAINT
931. FINISHES
932. CLADDING
933. SCREENS
934. GLASS
935. METALS
936. WOOD
937. PAINT
938. FINISHES
939. CLADDING
940. SCREENS
941. GLASS
942. METALS
943. WOOD
944. PAINT
945. FINISHES
946. CLADDING
947. SCREENS
948. GLASS
949. METALS
950. WOOD
951. PAINT
952. FINISHES
953. CLADDING
954. SCREENS
955. GLASS
956. METALS
957. WOOD
958. PAINT
959. FINISHES
960. CLADDING
961. SCREENS
962. GLASS
963. METALS
964. WOOD
965. PAINT
966. FINISHES
967. CLADDING
968. SCREENS
969. GLASS
970. METALS
971. WOOD
972. PAINT
973. FINISHES
974. CLADDING
975. SCREENS
976. GLASS
977. METALS
978. WOOD
979. PAINT
980. FINISHES
981. CLADDING
982. SCREENS
983. GLASS
984. METALS
985. WOOD
986. PAINT
987. FINISHES
988. CLADDING
989. SCREENS
990. GLASS
991. METALS
992. WOOD
993. PAINT
994. FINISHES
995. CLADDING
996. SCREENS
997. GLASS
998. METALS
999. WOOD
1000. PAINT
1001. FINISHES
1002. CLADDING
1003. SCREENS
1004. GLASS
1005. METALS
1006. WOOD
1007. PAINT
1008. FINISHES
1009. CLADDING
1010. SCREENS
1011. GLASS
1012. METALS
1013. WOOD
1014. PAINT
1015. FINISHES
1016. CLADDING
1017. SCREENS
1018. GLASS
1019. METALS
1020. WOOD
1021. PAINT
1022. FINISHES
1023. CLADDING
1024. SCREENS
1025. GLASS
1026. METALS
1027. WOOD
1028. PAINT
1029. FINISHES
1030. CLADDING
1031. SCREENS
1032. GLASS
1033. METALS
1034. WOOD
1035. PAINT
1036. FINISHES
1037. CLADDING
1038. SCREENS
1039. GLASS
1040. METALS
1041. WOOD
1042. PAINT
1043. FINISHES
1044. CLADDING
1045. SCREENS
1046. GLASS
1047. METALS
1048. WOOD
1049. PAINT
1050. FINISHES
1051. CLADDING
1052. SCREENS
1053. GLASS
1054. METALS
1055. WOOD
1056. PAINT
1057. FINISHES
1058. CLADDING
1059. SCREENS
1060. GLASS
1061. METALS
1062. WOOD
1063. PAINT
1064. FINISHES
1065. CLADDING
1066. SCREENS
1067. GLASS
1068. METALS
1069. WOOD
1070. PAINT
1071. FINISHES
1072. CLADDING
1073. SCREENS
1074. GLASS
1075. METALS
1076. WOOD
1077. PAINT
1078. FINISHES
1079. CLADDING
1080. SCREENS
1081. GLASS
1082. METALS
1083. WOOD
1084. PAINT
1085. FINISHES
1086. CLADDING
1087. SCREENS
1088. GLASS
1089. METALS
1090. WOOD
1091. PAINT
1092. FINISHES
1093. CLADDING
1094. SCREENS
1095. GLASS
1096. METALS
1097. WOOD
1098. PAINT
1099. FINISHES
1100. CLADDING
1101. SCREENS
1102. GLASS
1103. METALS
1104. WOOD
1105. PAINT
1106. FINISHES
1107. CLADDING
1108. SCREENS
1109. GLASS
1110. METALS
1111. WOOD
1112. PAINT
1113. FINISHES
1114. CLADDING
1115. SCREENS
1116. GLASS
1117. METALS
1118. WOOD
1119. PAINT
1120. FINISHES
1121. CLADDING
1122. SCREENS
1123. GLASS
1124. METALS
1125. WOOD
1126. PAINT
1127. FINISHES
1128. CLADDING
1129. SCREENS
1130. GLASS
1131. METALS
1132. WOOD
1133. PAINT
1134. FINISHES
1135. CLADDING
1136. SCREENS
1137. GLASS
1138. METALS
1139. WOOD
1140. PAINT
1141. FINISHES
1142. CLADDING
1143. SCREENS
1144. GLASS
1145. METALS
1146. WOOD
1147. PAINT
1148. FINISHES
1149. CLADDING
1150. SCREENS
1151. GLASS
1152. METALS
1153. WOOD
1154. PAINT
1155. FINISHES
1156. CLADDING
1157. SCREENS
1158. GLASS
1159. METALS
1160. WOOD
1161. PAINT
1162. FINISHES
1163. CLADDING
1164. SCREENS
1165. GLASS
1166. METALS
1167. WOOD
1168. PAINT
1169. FINISHES
1170. CLADDING
1171. SCREENS
1172. GLASS
1173. METALS
1174. WOOD
1175. PAINT
1176. FINISHES
1177. CLADDING
1178. SCREENS
1179. GLASS
1180. METALS
1181. WOOD
1182. PAINT
1183. FINISHES
1184. CLADDING
1185. SCREENS
1186. GLASS
1187. METALS
1188. WOOD
1189. PAINT
1190. FINISHES
1191. CLADDING
1192. SCREENS
1193. GLASS
1194. METALS
1195. WOOD
1196. PAINT
1197. FINISHES
1198. CLADDING
1199. SCREENS
1200. GLASS
1201. METALS
1202. WOOD
1203. PAINT
1204. FINISHES
1205. CLADDING
1206. SCREENS
1207. GLASS
1208. METALS
1209. WOOD
1210. PAINT
1211. FINISHES
1212. CLADDING
1213. SCREENS
1214. GLASS
1215. METALS
1216. WOOD
1217. PAINT
1218. FINISHES
1219. CLADDING
1220. SCREENS
1221. GLASS
1222. METALS
1223. WOOD
1224. PAINT
1225. FINISHES
1226. CLADDING
1227. SCREENS
1228. GLASS
1229. METALS
1230. WOOD
1231. PAINT
1232. FINISHES
1233. CLADDING
1234. SCREENS
1235. GLASS
1236. METALS
1237. WOOD
1238. PAINT
1239. FINISHES
1240. CLADDING
1241. SCREENS
1242. GLASS
1243. METALS
1244. WOOD
1245. PAINT
1246. FINISHES
1247. CLADDING
1248. SCREENS
1249. GLASS
1250. METALS
1251. WOOD
1252. PAINT
1253. FINISHES
1254. CLADDING
1255. SCREENS
1256. GLASS
1257. METALS
1258. WOOD
1259. PAINT
1260. FINISHES
1261. CLADDING
1262. SCREENS
1263. GLASS
1264. METALS
1265. WOOD
1266. PAINT
1267. FINISHES
1268. CLADDING
1269. SCREENS
1270. GLASS
1271. METALS
1272. WOOD
1273. PAINT
1274. FINISHES
1275. CLADDING
1276. SCREENS
1277. GLASS
1278. METALS
1279. WOOD
1280. PAINT
1281. FINISHES
1282. CLADDING
1283. SCREENS
1284. GLASS
1285. METALS
1286. WOOD
1287. PAINT
1288. FINISHES
1289. CLADDING
1290. SCREENS
1291. GLASS
1292. METALS
1293. WOOD
1294. PAINT
1295. FINISHES
1296. CLADDING
1297. SCREENS
1298. GLASS
1299. METALS
1300. WOOD
1301. PAINT
1302. FINISHES
1303. CLADDING
1304. SCREENS
1305. GLASS
1306. METALS
1307. WOOD
1308. PAINT
1309. FINISHES
1310. CLADDING
1311. SCREENS
1312. GLASS
1313. METALS
1314. WOOD
1315. PAINT
1316. FINISHES
1317. CLADDING
1318. SCREENS
1319. GLASS
1320. METALS
1321. WOOD
1322. PAINT
1323. FINISHES
1324. CLADDING
1325. SCREENS
1326. GLASS
1327. METALS
1328. WOOD
1329. PAINT
1330. FINISHES
1331. CLADDING
1332. SCREENS
1333. GLASS
1334. METALS
1335. WOOD
1336. PAINT
1337. FINISHES
1338. CLADDING
1339. SCREENS
1340. GLASS
1341. METALS
1342. WOOD
1343. PAINT
1344. FINISHES
1345. CLADDING
1346. SCREENS
1347. GLASS
1348. METALS
1349. WOOD
1350. PAINT
1351. FINISHES
1352. CLADDING
1353. SCREENS
1354. GLASS
1355. METALS
1356. WOOD
1357. PAINT
1358. FINISHES
1359. CLADDING
1360. SCREENS
1361. GLASS
1362. METALS
1363. WOOD
1364. PAINT
1365. FINISHES
1366. CLADDING
1367. SCREENS
1368. GLASS
1369. METALS
1370. WOOD
1371. PAINT
1372. FINISHES
1373. CLADDING
1374. SCREENS
1375. GLASS
1376. METALS
1377. WOOD
1378. PAINT
1379. FINISHES
1380. CLADDING
1381. SCREENS
1382. GLASS
1383. METALS
1384. WOOD
1385. PAINT
1386. FINISHES
1387. CLADDING
1388. SCREENS
1389. GLASS
1390. METALS
1391. WOOD
1392. PAINT
1393. FINISHES
1394. CLADDING
1395. SCREENS
1396. GLASS
1397. METALS
1398. WOOD
1399. PAINT
1400. FINISHES
1401. CLADDING
1402. SCREENS
1403. GLASS
1404. METALS
1405. WOOD
1406. PAINT
1407. FINISHES
1408. CLADDING
1409. SCREENS
1410. GLASS
1411. METALS
1412. WOOD
1413. PAINT
1414. FINISHES
1415. CLADDING
1416. SCREENS
1417. GLASS
1418. METALS
1419. WOOD
1420. PAINT
1421. FINISHES
1422. CLADDING
1423. SCREENS
1424. GLASS
1425. METALS
1426. WOOD
1427. PAINT
1428. FINISHES
1429. CLADDING
1430. SCREENS
1431. GL

22_018 S4.55_3-A-010



ROA ARCHITECTS PTY LTD
 2/48 COLLEGE ROAD
 E MURRAY NSW 2220
 ABR 18 67 622 548
 Nominated Architects No.
 New South Wales 0481

- NOTES
1. THE SET OUT OF DRAWING USES DIMENSIONS ONLY.
 2. DIMENSIONS ARE TO BE USED FOR COMMERCIAL & RESIDENTIAL PURPOSES IN THE SERVICE.
 3. DIMENSIONS ARE TO BE USED FOR COMMERCIAL & RESIDENTIAL PURPOSES IN THE SERVICE. DIMENSIONS SHOULD BE PREPARED WHERE REQUIRED FOR RECONSTRUCTION.
 4. THE COPYRIGHT OF THIS DRAWING REMAINS THE PROPERTY OF ROA ARCHITECTS. THIS DRAWING IS NOT TO BE REPRODUCED OR TRANSMITTED IN ANY FORM OR BY ANY MEANS, ELECTRONIC OR MECHANICAL, INCLUDING PHOTOCOPYING, RECORDING, OR BY ANY INFORMATION STORAGE AND RETRIEVAL SYSTEM, WITHOUT THE WRITTEN PERMISSION OF ROA ARCHITECTS.
 5. ANY DIMENSIONS SHOWN ON THIS DRAWING ARE TO BE USED FOR CONSTRUCTION UNLESS OTHERWISE SPECIFIED.

KEYS
 Please refer to the notes page for a legend that includes further notes and an explanation of abbreviations.



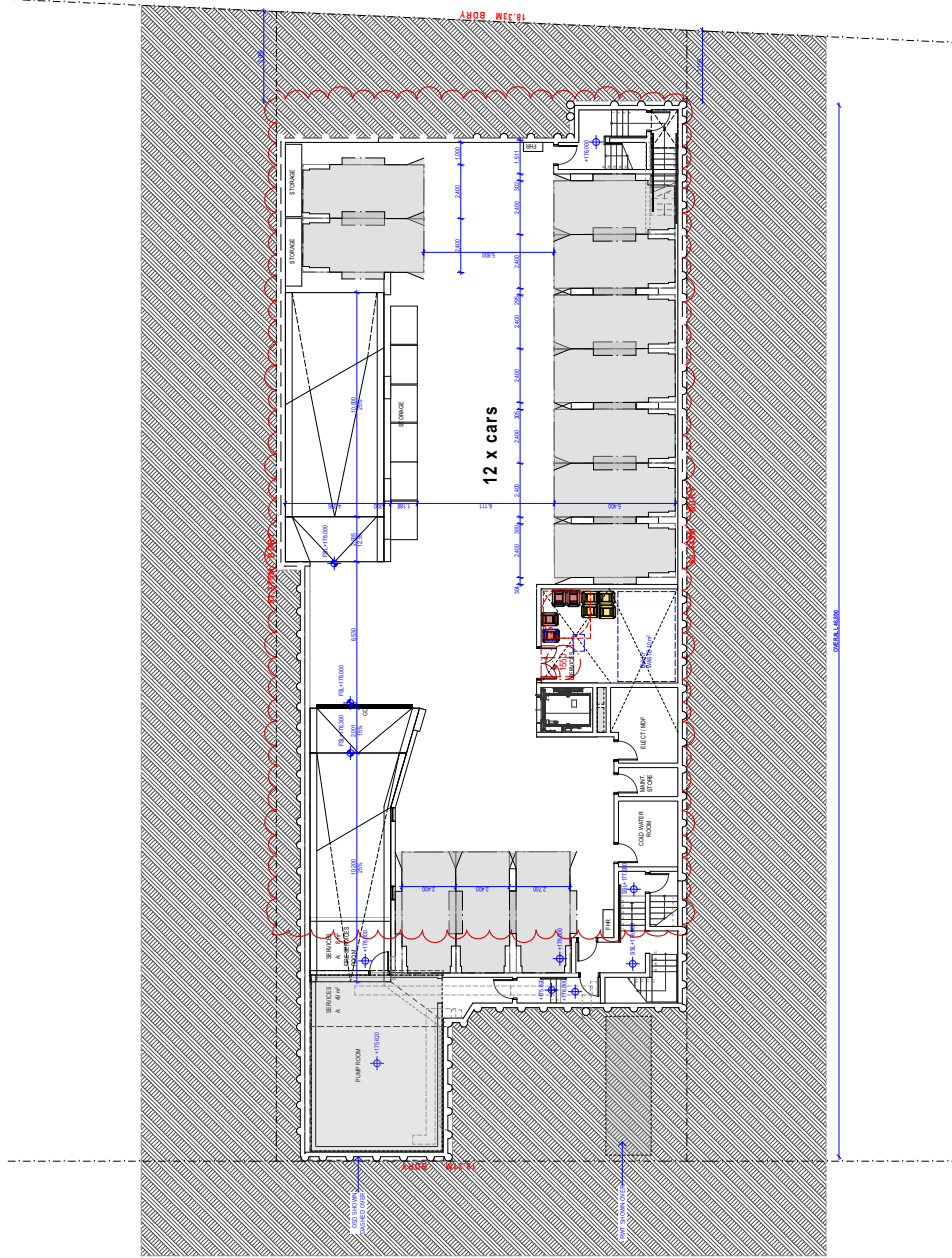
REVISION	DATE	NOTES
1	07/10/2025	FOR SUBMISSION

DRAWN BY
SITE PLAN
 DRAWING NUMBER
S4.55_3-A-010
 REVISED BY
 REVISED DATE
 FOR SUBMISSION

PROJECT
BOUVDIA
 10 BOUVDIA STREET, ASQUITH
 CLIENT
 BLUESTONE DEVELOPMENTS
 BASEMENT - S4.55_04/04/04

ATTACHMENT 1 - ITEM 1

22_018_S4.55_3-A-101



PROJECT
BOUARDIA
10 BOUARDIA STREET, ASQUITH
BLUESTONE DEVELOPMENTS
BASEMENT - S4.55.40/4A

DRAWING TITLE
GA - BASEMENT LEVEL 1
DRAWING NUMBER
S4.55_3-A-101
REVISED
REV 01 - 04.02.2020
FOR S4.55 SUBMISSION

REVISION	DATE	NOTES
1	04.02.2020	FOR SUBMISSION
2	04.02.2020	CARPARK CHANGES



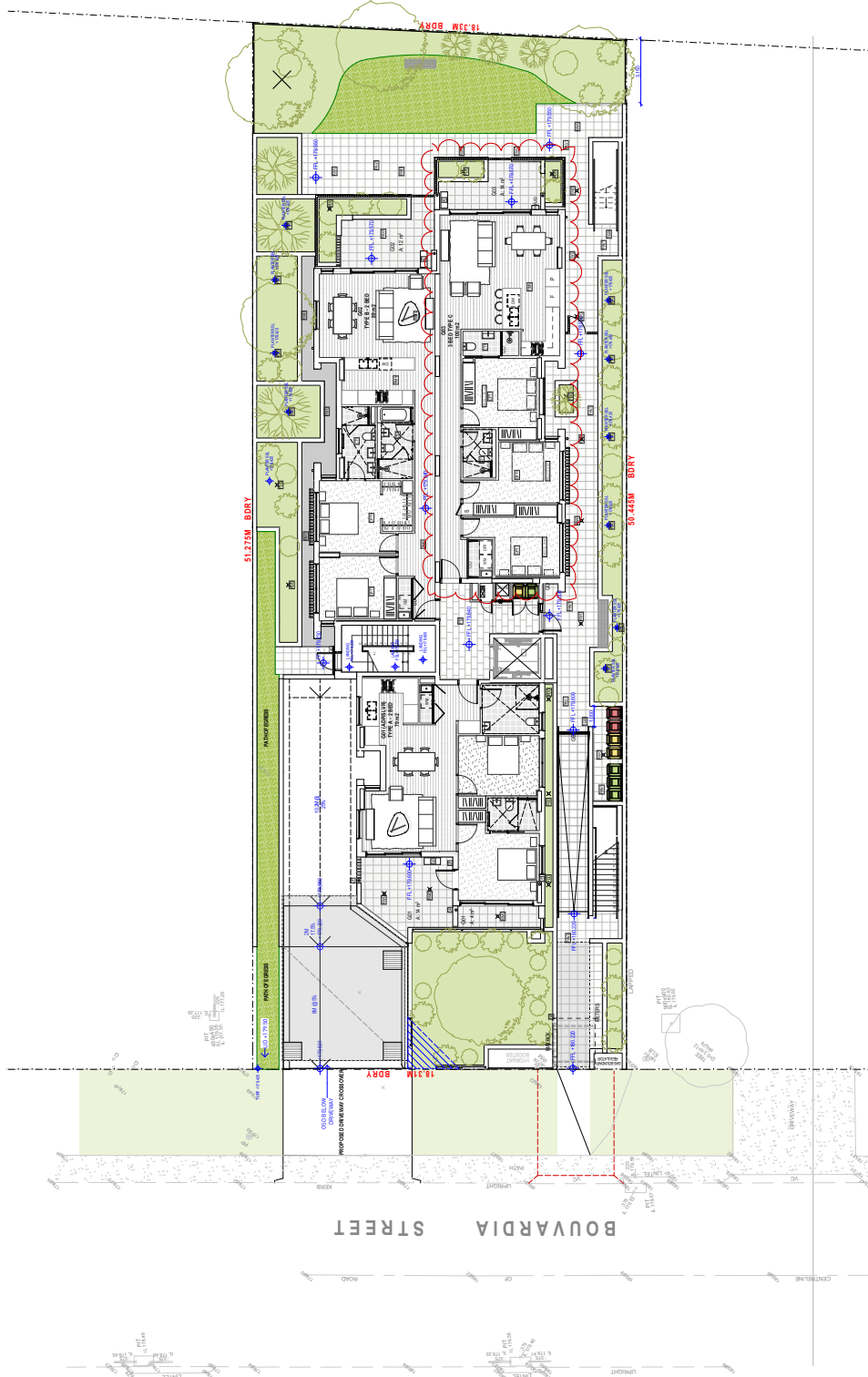
NOTES
Please refer to the notes page for a legend that includes further notes and an explanation of abbreviations.

- NOTES**
1. THE SET OUTS OF DWGP, VAN, SIGNPOSTS AND SIGNAGE ARE FOR INFORMATION ONLY.
 2. DIMENSIONS ARE AS SHOWN UNLESS OTHERWISE SPECIFIED.
 3. ALL DIMENSIONS ARE TO FACE UNLESS OTHERWISE SPECIFIED.
 4. THIS COPY OF THIS DRAWING REMAINS THE PROPERTY OF RDCM ARCHITECTS. THIS DRAWING IS NOT TO BE REPRODUCED OR COPIED IN ANY MANNER WITHOUT THE WRITTEN PERMISSION OF RDCM ARCHITECTS. THIS DRAWING IS NOT TO BE USED FOR ANY OTHER PROJECT WITHOUT THE WRITTEN PERMISSION OF RDCM ARCHITECTS. DO NOT USE THIS DRAWING FOR CONSTRUCTION UNLESS APPROVED.

RDCM ARCHITECTS PTY LTD
12/150-152 BROADWAY
2/181-183 BROADWAY
E: info@rdcmarchitects.com.au
P: (02) 9550 1234
ABR 18 67 622 548
REGISTERED ARCHITECTS NO. 123456789
Mrs Catherine Rennie 0611



ATTACHMENT 1 - ITEM 1



RDA ARCHITECTS PTY LTD
 2/48 BROADWAY
 E MURRAY NSW 2146
 E: mur@rda.com.au

ABR 18 67 02 548
 NOMINATED ARCHITECTS NO.
 New South Wales 0481

- NOTES**
1. The RDA scale of drawings, unless otherwise stated.
 2. Dimensions are all prior to construction & represent approx. to the finished work.
 3. All dimensions should be checked by the contractor at every stage. Discrepancies should be reported immediately to the architect.
 4. The copyright of this design remains the property of RDA ARCHITECTS. This design is not to be used for any other project without the written consent of RDA ARCHITECTS. This design is the property of RDA ARCHITECTS. It is not to be used for any other project without the written consent of RDA ARCHITECTS. It is not to be used for any other project without the written consent of RDA ARCHITECTS.

NOTES
 Please to the notes page for a legend that includes further notes and an explanation of abbreviations.

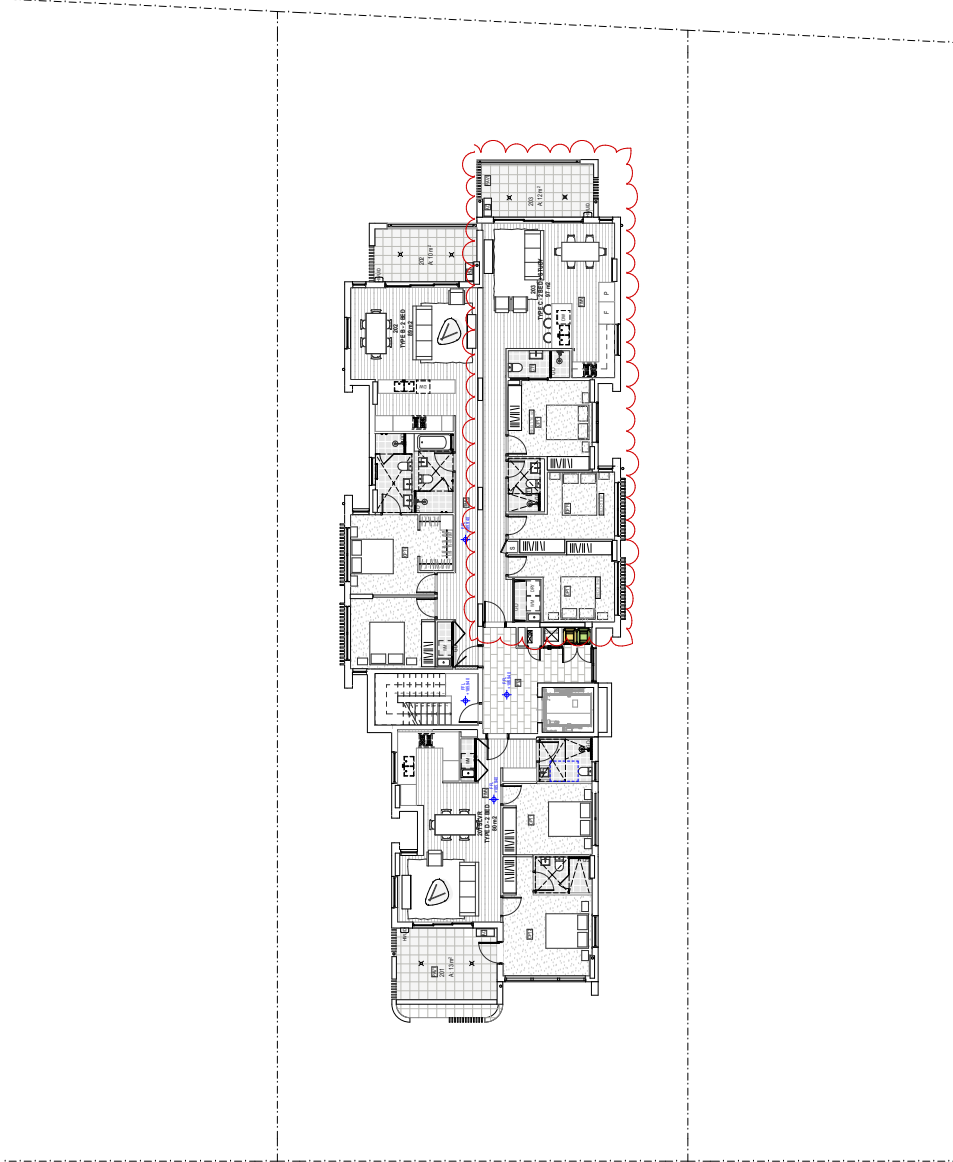


REVISION	DATE	NOTES
1	04.02.2006	FOR SUBMISSION
2	04.02.2006	FOR SUBMISSION
3	04.02.2006	FOR SUBMISSION
4	04.02.2006	FOR SUBMISSION
5	04.02.2006	FOR SUBMISSION
6	04.02.2006	FOR SUBMISSION

DRAWN BY
 GA - GROUND LEVEL
 DRAWN BY
S4.55_3-A-101
 REV'D 04.02.2006
 FOR S4.55 SUBMISSION

PROJECT
 BOUVDARIA
 10 BOUVDARIA STREET, ASQUITH
 CLIENT
 BLUESTONE DEVELOPMENTS
 BASEMENT - S4.55_400M

ATTACHMENT 1 - ITEM 1



ROA ARCHITECTS PTY LTD
 2/48 COLLEGE STREET
 SYDNEY NSW 2000
 E: info@roaarchitects.com.au

ABR 18 617 523 548
 NOMINATED ARCHITECTS NO
 10/10/2018
 Mrs. Catharine Rowley (M1)

NOTES
 1. THE USE OF ALL DIMENSIONS AND SPACING IS FOR INFORMATION ONLY.
 2. DIMENSIONS ARE TO FACE UNLESS OTHERWISE SPECIFIED.
 3. ALL DIMENSIONS ARE TO FACE UNLESS OTHERWISE SPECIFIED.
 4. THIS COPY OF THIS DRAWING REMAINS THE PROPERTY OF ROA ARCHITECTS. THIS DRAWING IS NOT TO BE REPRODUCED OR COPIED IN ANY MANNER WITHOUT THE WRITTEN PERMISSION OF ROA ARCHITECTS. THIS DRAWING IS NOT TO BE USED FOR CONSTRUCTION UNLESS APPROVED BY ROA ARCHITECTS.

KEY
 Please refer to notes page for a legend that includes further notes and an explanation of abbreviations.

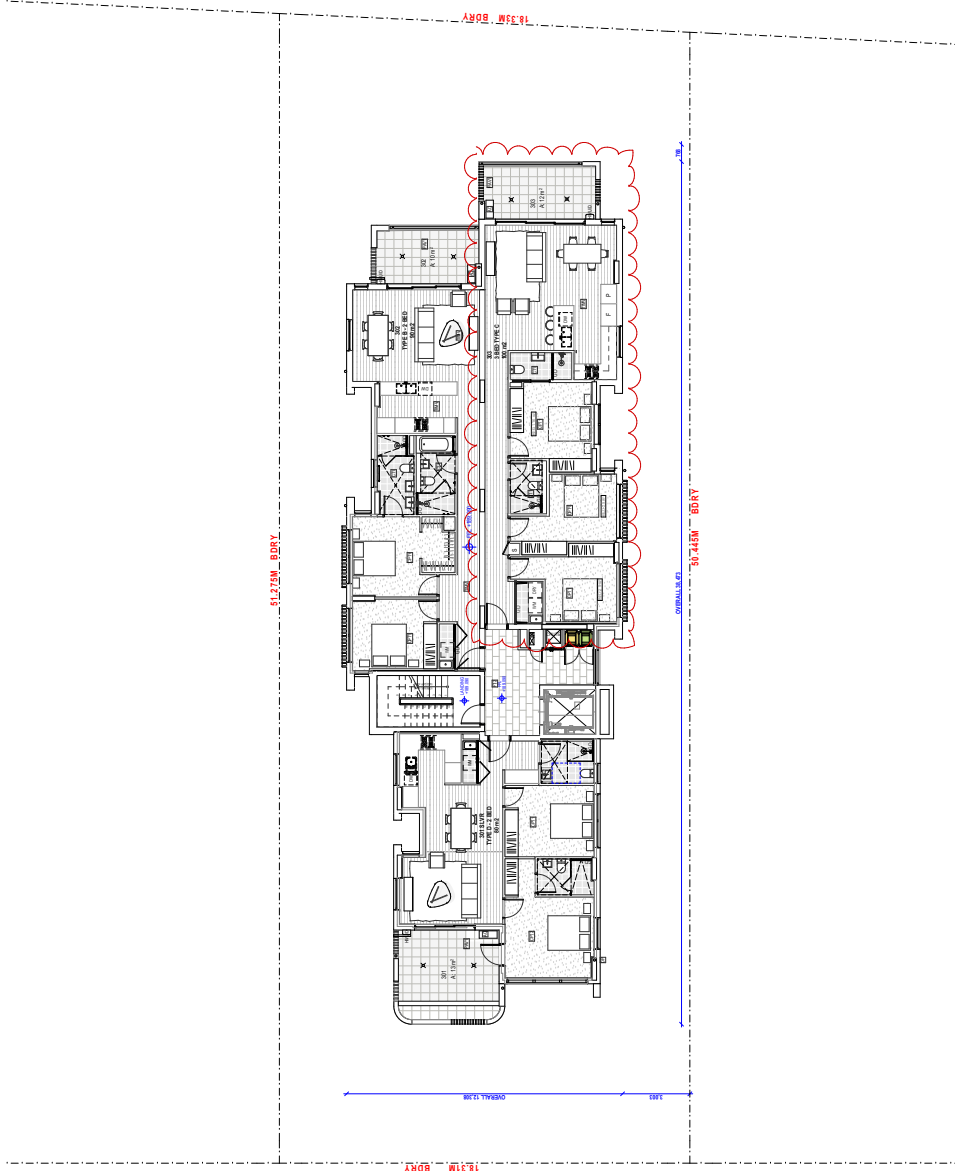


REVISION	DATE	NOTES
1	14/12/2018	FOR SUBMISSION
2	14/12/2018	FOR PARTIAL CHANGES

DRAWN BY
 GA - LEVEL 2
DRAWING NUMBER
 S4.55_3-A-103
REVISED
 04.02.2006
STATUS
 FOR S4.55 SUBMISSION

PROJECT
 BOWARDIA
10 BOUARDIA STREET, ASQUITH
S4.55 MODIFICATION APPLICATION
CLIENT
 BLUESTONE DEVELOPMENTS
 10 BOUARDIA STREET, ASQUITH, ENTRA
 BASEMENT - S4.55.00/00A

ATTACHMENT 1 - ITEM 1



PROJECT
BOUVARDA
10 BOUVARDA STREET, ASQUITH
BLUESTONE DEVELOPMENTS
S4.55 MODIFICATION APPLICATION
CLIENT
BLUESTONE DEVELOPMENTS
BASEMENT - S4.55_400/04

DRAWN BY
GA - LEVEL 3
DRAWING NUMBER
S4.55_3-A-104
REVISED
REV/B - 04.02.2026
STATUS
FOR S4.55 SUBMISSION

REVISION	DATE	NOTES
1	04.02.2026	FOR SUBMISSION
2	04.02.2026	FOR SUBMISSION
3	04.02.2026	FOR SUBMISSION
4	04.02.2026	FOR SUBMISSION
5	04.02.2026	FOR SUBMISSION
6	04.02.2026	FOR SUBMISSION
7	04.02.2026	FOR SUBMISSION
8	04.02.2026	FOR SUBMISSION
9	04.02.2026	FOR SUBMISSION
10	04.02.2026	FOR SUBMISSION



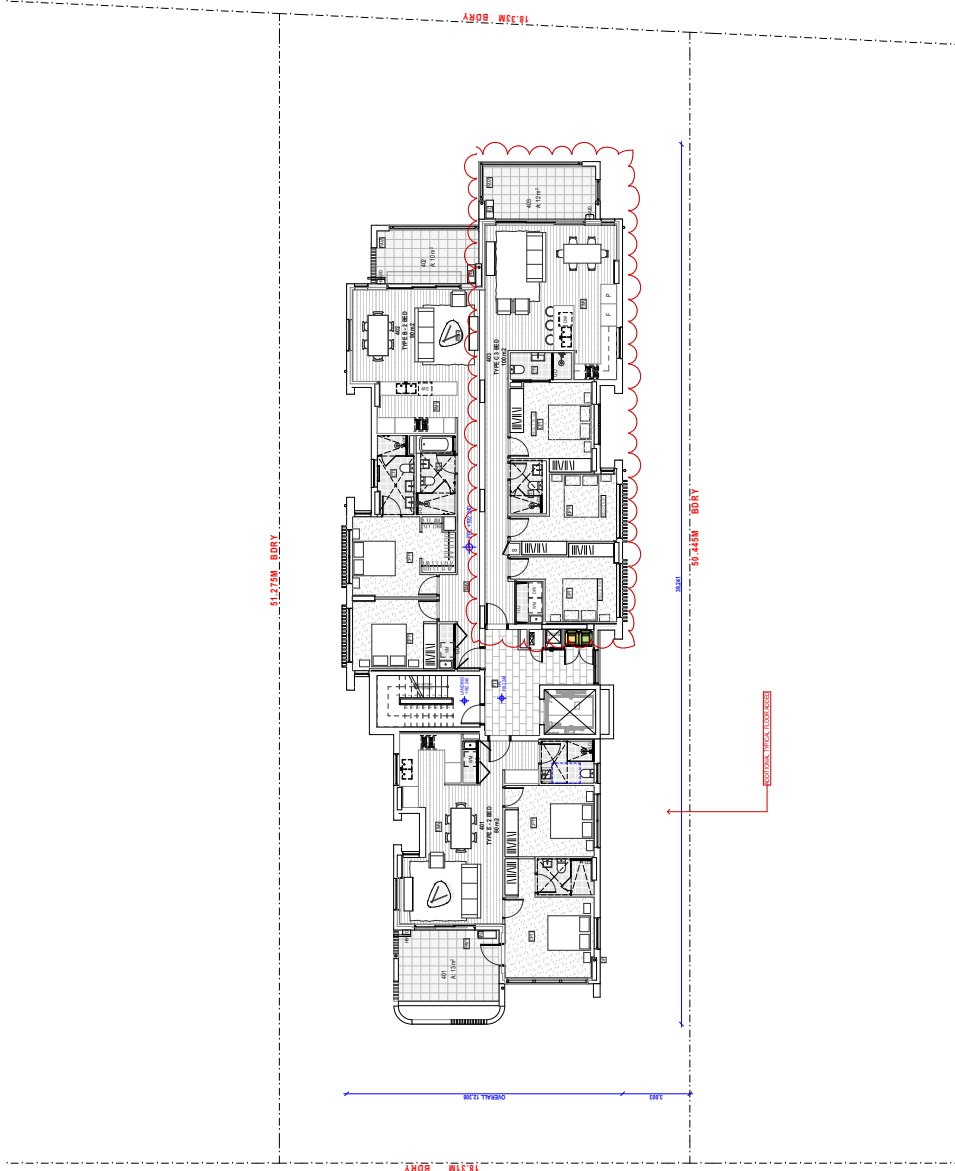
NOTES
Please refer to the notes page for a legend that includes further notes and an explanation of abbreviations.

- 1. THE SET OUT OF THIS DRAWING IS FOR INFORMATION ONLY.
- 2. DIMENSIONS ARE GIVEN IN METERS UNLESS OTHERWISE STATED.
- 3. THIS DRAWING IS THE PROPERTY OF RDA ARCHITECTS. IT IS TO BE USED ONLY FOR THE PROJECT AND SITE SPECIFIC FOR WHICH IT WAS PREPARED. IT IS NOT TO BE REPRODUCED OR USED FOR ANY OTHER PROJECT WITHOUT THE WRITTEN PERMISSION OF RDA ARCHITECTS.
- 4. THE COPYRIGHT OF THIS DRAWING REMAINS THE PROPERTY OF RDA ARCHITECTS. THIS DRAWING IS THE PROPERTY OF RDA ARCHITECTS AND IS NOT TO BE REPRODUCED OR USED FOR ANY OTHER PROJECT WITHOUT THE WRITTEN PERMISSION OF RDA ARCHITECTS.
- 5. RDA ARCHITECTS IS NOT RESPONSIBLE FOR THE ACCURACY OF THE INFORMATION FOR THE PROJECT. THE CLIENT IS RESPONSIBLE FOR THE ACCURACY OF THE INFORMATION FOR THE PROJECT.

RDA ARCHITECTS PTY LTD
10/110-112/114
2/48-50
E: info@rdaarchitects.com.au
P: 02 9439 1111
F: 02 9439 1112
RDA ARCHITECTS NO.
10/110-112/114
New Orleans (Rome) 0481



ATTACHMENT 1 - ITEM 1



PROJECT
BOUVARDA
10 BOUVARDA STREET, ASQUITH
BLUESTONE DEVELOPMENTS
CLIENT
BASEMENT - S4.55_400/04

DRAWN BY
GA - LEVEL 4
DRAWN BY
S4.55_3-A-105
REV B 04/02/2026
DATE
FOR S4.55 SUBMISSION

REVISION	DATE	NOTES
1	04/02/2026	FOR SUBMISSION
2	04/02/2026	FOR SUBMISSION
3	04/02/2026	FOR SUBMISSION
4	04/02/2026	FOR SUBMISSION
5	04/02/2026	FOR SUBMISSION
6	04/02/2026	FOR SUBMISSION
7	04/02/2026	FOR SUBMISSION
8	04/02/2026	FOR SUBMISSION
9	04/02/2026	FOR SUBMISSION
10	04/02/2026	FOR SUBMISSION



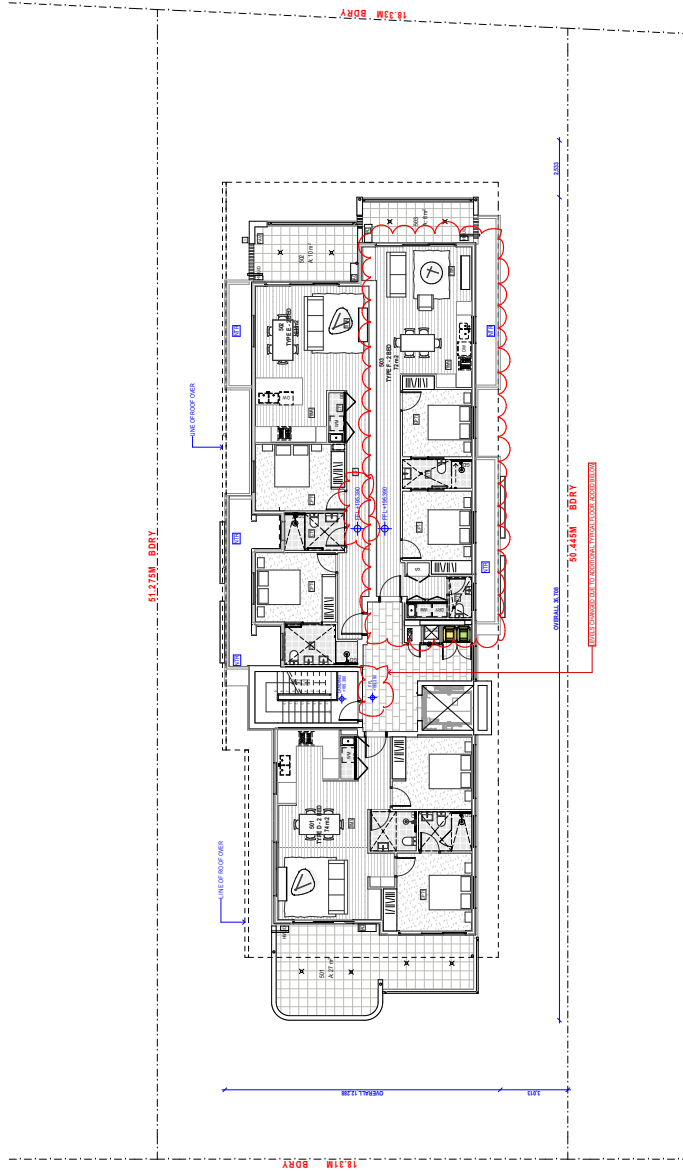
NOTES
Please refer to the notes page for a legend that includes further notes and an explanation of abbreviations.

- 1. THE SET CASE OF DRAWING, USE (SPECIFICATION ONLY).
- 2. DIMENSIONS ARE GIVEN IN METERS UNLESS OTHERWISE STATED.
- 3. ALL DIMENSIONS ARE TO FACE UNLESS OTHERWISE STATED.
- 4. THIS COPY OF THIS DRAWING REMAINS THE PROPERTY OF RDA ARCHITECTS. THIS DRAWING IS NOT TO BE REPRODUCED OR COPIED IN ANY MANNER WITHOUT THE WRITTEN PERMISSION OF RDA ARCHITECTS. THIS DRAWING IS NOT TO BE USED FOR ANY OTHER PROJECT WITHOUT THE WRITTEN PERMISSION OF RDA ARCHITECTS. DO NOT USE THIS DRAWING FOR CONSTRUCTION UNLESS APPROVED.

RDA ARCHITECTS PTY LTD
2/48 COLLEGE STREET
SYDNEY NSW 2000
E: info@rdaarchitects.com.au
RDA ARCHITECTS NO. 1
MRS. ORLANDA BOWEN (MKT)



ATTACHMENT 1 - ITEM 1



ROA ARCHITECTS PTY LTD
 2/48 COLLEGE STREET
 SYDNEY NSW 2000
 E: info@roaarchitects.com.au
 ABR 16 67 622 548
 NOMINATED ARCHITECTS NO
 16010
 Mrs. Catharine Rowan (M1)

- NOTES**
1. THE SET CASE OF DRAWING, USE SIGNIFICANCE ONLY.
 2. DIMENSIONS ON ALL PLOTTING TO COMMENCEMENT & REVISIONS TO BE SHOWN.
 3. ALL DIMENSIONS TO BE TO FACE UNLESS OTHERWISE SPECIFIED.
 4. THIS COPY OF THIS DRAWING REMAINS THE PROPERTY OF ROA ARCHITECTS. THIS DRAWING IS NOT TO BE REPRODUCED OR COPIED IN ANY MANNER WITHOUT THE WRITTEN PERMISSION OF ROA ARCHITECTS.
 5. ANY CHANGES TO THIS DRAWING MUST BE APPROVED BY ROA ARCHITECTS. ANY CHANGES TO THIS DRAWING MUST BE APPROVED BY ROA ARCHITECTS.

KEY
 Refer to the notes page for a legend that includes further notes and an explanation of abbreviations.



REVISION	DATE	NOTES
1	04.02.2006	FOR SUBMISSION
2	04.02.2006	FOR SUBMISSION
3	04.02.2006	FOR SUBMISSION
4	04.02.2006	FOR SUBMISSION
5	04.02.2006	FOR SUBMISSION
6	04.02.2006	FOR SUBMISSION
7	04.02.2006	FOR SUBMISSION
8	04.02.2006	FOR SUBMISSION
9	04.02.2006	FOR SUBMISSION
10	04.02.2006	FOR SUBMISSION

DRAWN BY
 GA - LEVEL 5
DRAWING NUMBER
 S4.55_3-A-106
REVISED
 REV 01 04.02.2006
SCALE
 FOR S4.55 SUBMISSION

PROJECT
 BOUNDARIA
10 BOUVARDIA STREET, ASQUITH
BLUESTONE DEVELOPMENTS
BASEMENT - S4.55_400/40A

ATTACHMENT 1 - ITEM 1

ATTACHMENT 1 - ITEM 1

- NOTE:**
1. NEVER scale drawings. Use figure dimensions only.
 2. Verify all dimensions on site prior to commencement & report.
 3. Drawings are for the purpose of design and general set out. These drawings are not to be used for construction or to be used as a guide for any other drawings. Do not be held liable for any errors or omissions.
 4. The copyright of this design remains the property of R/OCA ARCHITECTS. This design is not to be used, copied or reproduced without the written consent of R/OCA ARCHITECTS.
 5. This drawing is not to be used by the client or any other party without the written consent of R/OCA ARCHITECTS.

LEGEND:
 Note: All dimensions are in meters unless otherwise stated. All dimensions are to the center of the surface designated.

AREA SCHEDULES		
TYPE	LEVEL	AREA
GROSS FLOOR AREA		
	GROUND SSL	288
	LEVEL 1 SSL	288
	LEVEL 2 SSL	288
	LEVEL 3 SSL	248
	LEVEL 4 SSL	248
	LEVEL 5 SSL	248
	LEVEL 6 SSL	248
	LEVEL 7 SSL	248
	LEVEL 8 SSL	248
	LEVEL 9 SSL	248
	LEVEL 10 SSL	248
	LEVEL 11 SSL	248
	LEVEL 12 SSL	248
	LEVEL 13 SSL	248
	LEVEL 14 SSL	248
	LEVEL 15 SSL	248
	LEVEL 16 SSL	248
	LEVEL 17 SSL	248
	LEVEL 18 SSL	248
	LEVEL 19 SSL	248
	LEVEL 20 SSL	248
	LEVEL 21 SSL	248
	LEVEL 22 SSL	248
	LEVEL 23 SSL	248
	LEVEL 24 SSL	248
	LEVEL 25 SSL	248
	LEVEL 26 SSL	248
	LEVEL 27 SSL	248
	LEVEL 28 SSL	248
	LEVEL 29 SSL	248
	LEVEL 30 SSL	248
	LEVEL 31 SSL	248
	LEVEL 32 SSL	248
	LEVEL 33 SSL	248
	LEVEL 34 SSL	248
	LEVEL 35 SSL	248
	LEVEL 36 SSL	248
	LEVEL 37 SSL	248
	LEVEL 38 SSL	248
	LEVEL 39 SSL	248
	LEVEL 40 SSL	248
	LEVEL 41 SSL	248
	LEVEL 42 SSL	248
	LEVEL 43 SSL	248
	LEVEL 44 SSL	248
	LEVEL 45 SSL	248
	LEVEL 46 SSL	248
	LEVEL 47 SSL	248
	LEVEL 48 SSL	248
	LEVEL 49 SSL	248
	LEVEL 50 SSL	248
	LEVEL 51 SSL	248
	LEVEL 52 SSL	248
	LEVEL 53 SSL	248
	LEVEL 54 SSL	248
	LEVEL 55 SSL	248
	LEVEL 56 SSL	248
	LEVEL 57 SSL	248
	LEVEL 58 SSL	248
	LEVEL 59 SSL	248
	LEVEL 60 SSL	248
	LEVEL 61 SSL	248
	LEVEL 62 SSL	248
	LEVEL 63 SSL	248
	LEVEL 64 SSL	248
	LEVEL 65 SSL	248
	LEVEL 66 SSL	248
	LEVEL 67 SSL	248
	LEVEL 68 SSL	248
	LEVEL 69 SSL	248
	LEVEL 70 SSL	248
	LEVEL 71 SSL	248
	LEVEL 72 SSL	248
	LEVEL 73 SSL	248
	LEVEL 74 SSL	248
	LEVEL 75 SSL	248
	LEVEL 76 SSL	248
	LEVEL 77 SSL	248
	LEVEL 78 SSL	248
	LEVEL 79 SSL	248
	LEVEL 80 SSL	248
	LEVEL 81 SSL	248
	LEVEL 82 SSL	248
	LEVEL 83 SSL	248
	LEVEL 84 SSL	248
	LEVEL 85 SSL	248
	LEVEL 86 SSL	248
	LEVEL 87 SSL	248
	LEVEL 88 SSL	248
	LEVEL 89 SSL	248
	LEVEL 90 SSL	248
	LEVEL 91 SSL	248
	LEVEL 92 SSL	248
	LEVEL 93 SSL	248
	LEVEL 94 SSL	248
	LEVEL 95 SSL	248
	LEVEL 96 SSL	248
	LEVEL 97 SSL	248
	LEVEL 98 SSL	248
	LEVEL 99 SSL	248
	LEVEL 100 SSL	248

GFA SCHEDULE



NO.	DATE	DESCRIPTION
1	22/05/2018	ISSUED FOR SUBMISSION

0 R/OCA ARCHITECTS PTY LTD
 41 Bridge Road
 St Leonards NSW 1590
 T +61 2 9441 1111
 E info@rocaarchitects.com.au

ROCA

ARN 81657 024 848
 NOMINATED ARCHITECTS
 Johnnie Doherty 1144K
 JILL CASSELL 108544645

22 018 SK-A-800

PROJECT TITLE: **GROUND & L1 GFA**

STATUS:

REV:

ADDRESS: **10 BOUVARDIA STREET, ASQUITH**

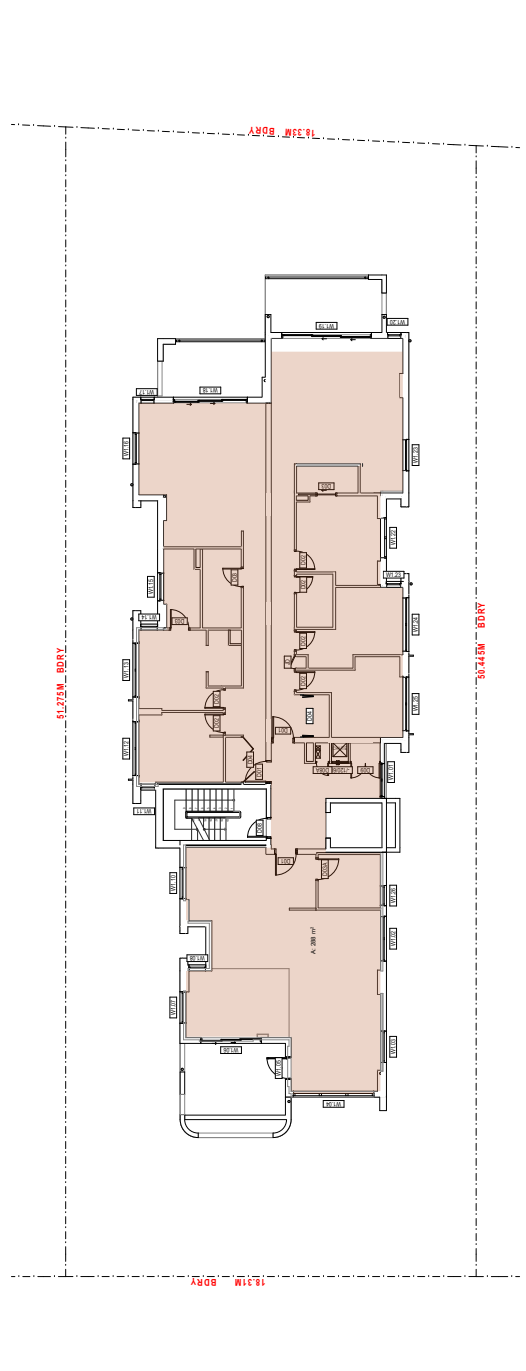
CLIENT: **BLUESTONE DEVELOPMENTS**

PROJECT: **BOUVARDIA**

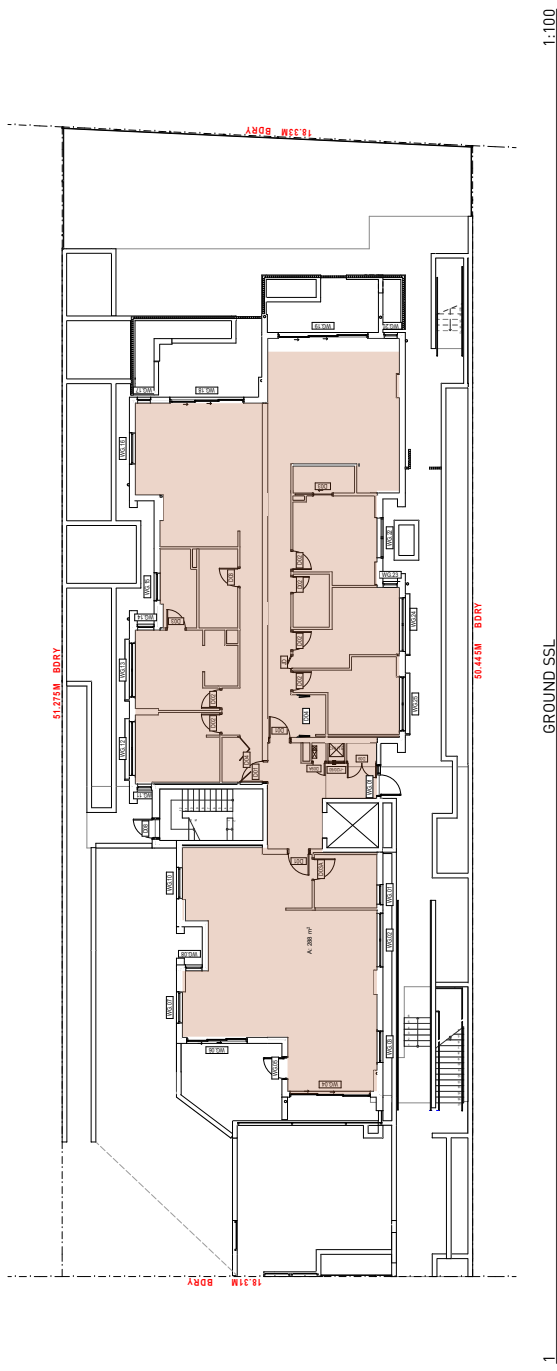
FILE NO: **S4.55 MODIFICATION APPLICATION**

MODEL NO: **S4.55 MODIFICATION APPLICATION**

DATE: **22/05/2018**



LEVEL 1 SSL 1:100



GROUND SSL 1:100

ATTACHMENT 1 - ITEM 1

- NOTE:**
1. NEVER scale drawings. Use figure dimensions only.
 2. Verify all dimensions on site prior to commencement & report.
 3. Drawings are for the purpose of information only. They are not to be used for construction or other purposes. All dimensions are to be taken from the drawings. Do not rely on the drawings for any other purpose.
 4. The copyright of this design remains the property of ROKA ARCHITECTS. This design is to be used, copied or reproduced with the authority of ROKA ARCHITECTS.
 5. This drawing is not to be used by the client or others without the written consent of ROKA ARCHITECTS.

LEGEND:
 Refer to the notes regarding the symbols that indicate further notes and an appropriate reference.

AREA SCHEDULES		
TYPE	LEVEL	AREA
GROSS FLOOR AREA		
	GROUND SSL	288
	LEVEL 1 SSL	288
	LEVEL 2 SSL	288
	LEVEL 3 SSL	248
	LEVEL 4 SSL	248
	LAND	1400 m ²

GFA SCHEDULE



NO.	DATE	DESCRIPTION
1	22/05/2018	FOR SUBMISSION

22/018 SK-A-801

ROKA
 ROKA ARCHITECTS PTY LTD
 41 Blue Road
 Sharnbrook NSW 2048
 E: 234441109
 info@rokaarchitects.com.au

AKN 81657 024 848
 NOMINATED ARCHITECTS
 James Daley 1148K
 JILLIE CASH, MEMBERSHIP

DRAWING TITLE
L2 & L3 GFA

STATUS

REV	DATE	DESCRIPTION
1		10 BOUVARDIA STREET, ASQUITH
1		BLUESTONE DEVELOPMENTS
1		BLUESTONE DEVELOPMENTS

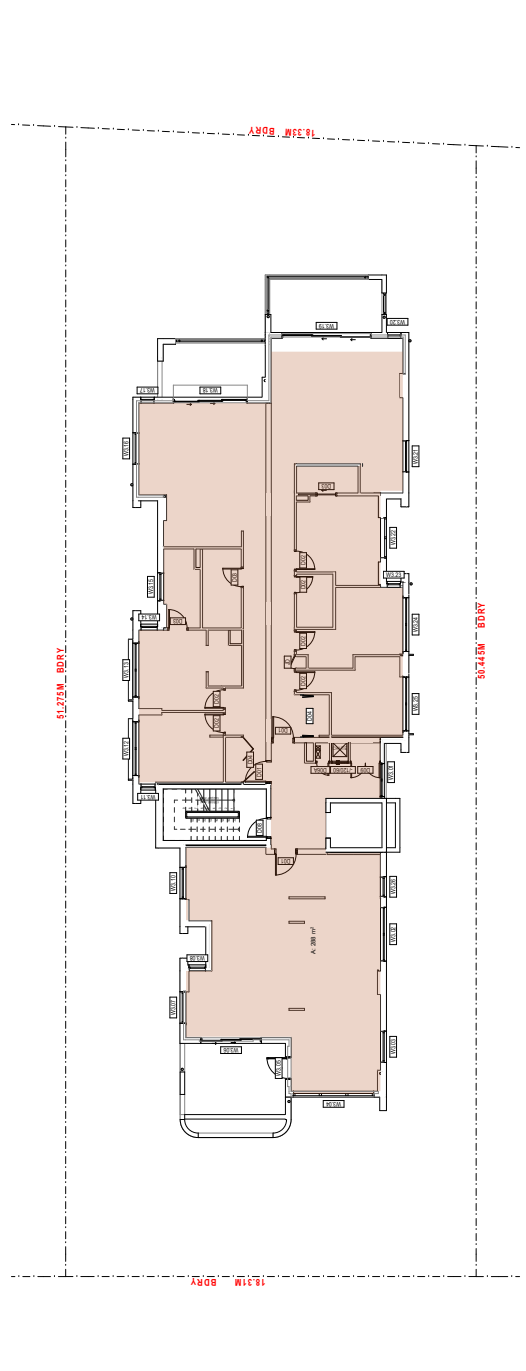
PROJECT
 BOUVARDIA

CLIENT
 BLUESTONE DEVELOPMENTS

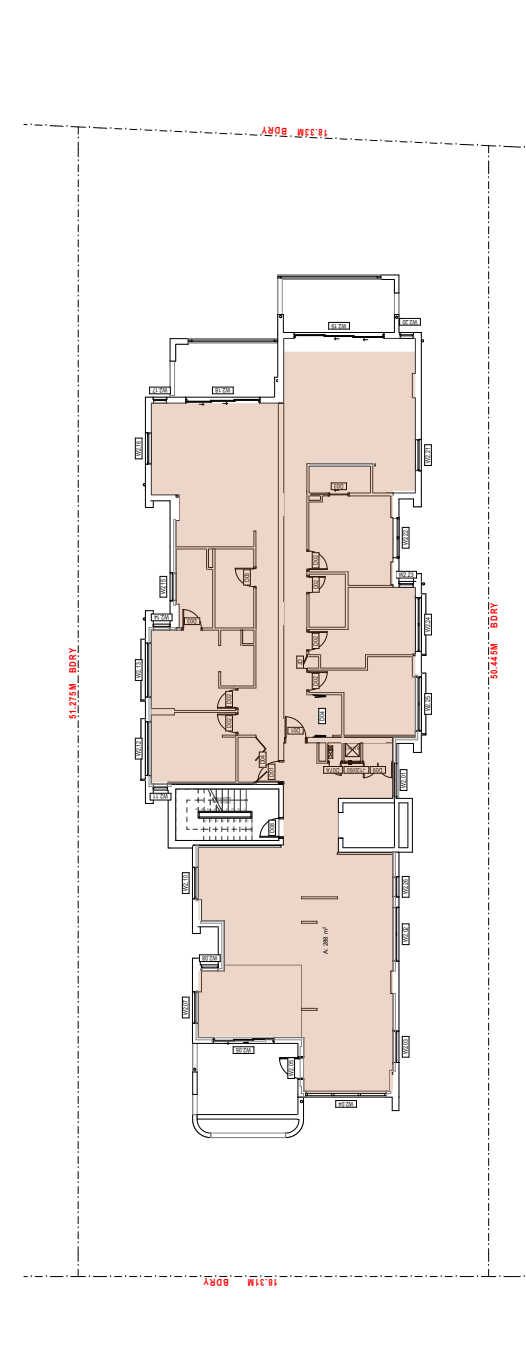
DATE
 22/05/2018

SCALE
 S4.55 MODIFICATION APPLICATION

PROJECT NO.
 22/018 SK-A-801



LEVEL 4 SSL 1:100



LEVEL 3 SSL 1:100

- NOTE:**
1. NEVER scale off drawings. Use figured dimensions only.
 2. Verify all dimensions on site prior to commencement & report.
 3. Drawings are the sole property of the architect and shall not be used for any other purpose without the written consent of the architect. The design is to be used, copied or reproduced in any form without the written consent of the architect.
 4. The copyright of this design remains the property of ROKA ARCHITECTS. This design is to be used, copied or reproduced in any form without the written consent of the architect.
 5. This drawing is not to be used by the client or any other party without the written consent of the architect.

LEGEND:
 Refer to the notes regarding the schedule that includes further notes and an explanation of the symbols.

AREA SCHEDULES		
TYPE	LEVEL	AREA
GROUND FLOOR AREA		
LEVEL 1 SSL	288	
LEVEL 2 SSL	288	
LEVEL 3 SSL	288	
LEVEL 4 SSL	248	
LEVEL 5 SSL	248	
TOTAL		
1,000 m ²		

GFA SCHEDULE



NO.	DATE	DESCRIPTION
1	12/02/2016	FOR SUBMISSION

22.018 SK-A-801

ROKA
 ROKA ARCHITECTS PTY LTD
 41 BIRCH ROAD
 SHIRAZ NSW 2048
 T: +61 2 9440 1100
 F: +61 2 9440 1101
 info@rokaarchitects.com.au

ARN 81657 024 848
 NOMINATED ARCHITECTS
 JOHNAS DALES 11448
 1161 CASLAR TERRACE S45

DRAWING TITLE
L4 GFA

STATUS

REV

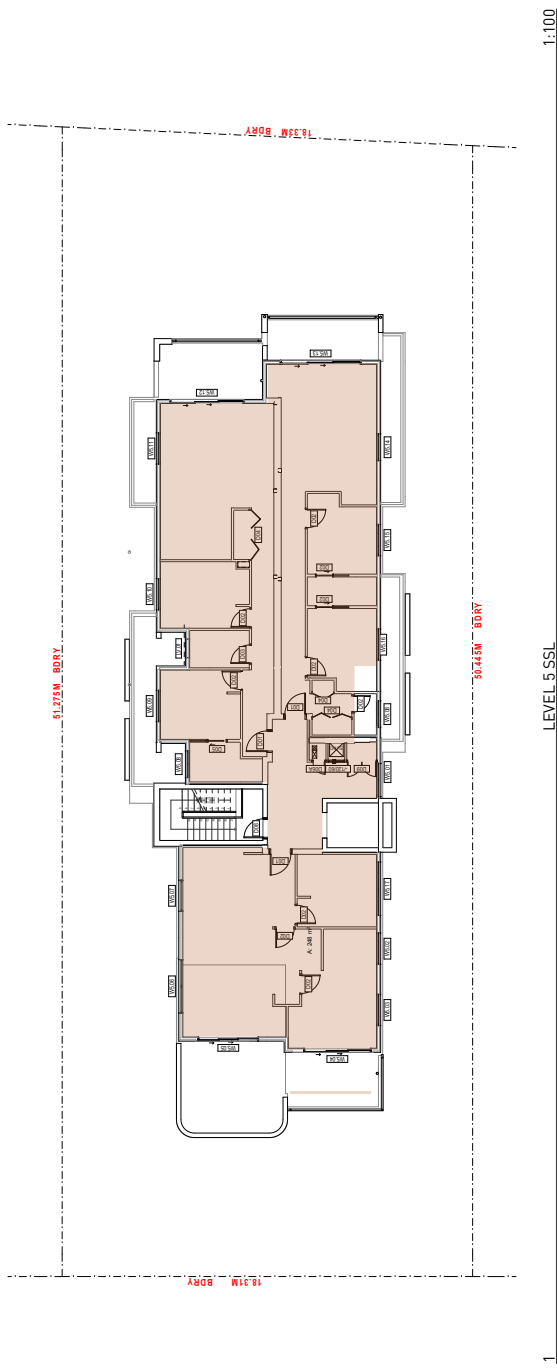
ADDRESS
10 BOUVARDIA STREET, ASQUITH

CLIENT
BLUESTONE DEVELOPMENTS

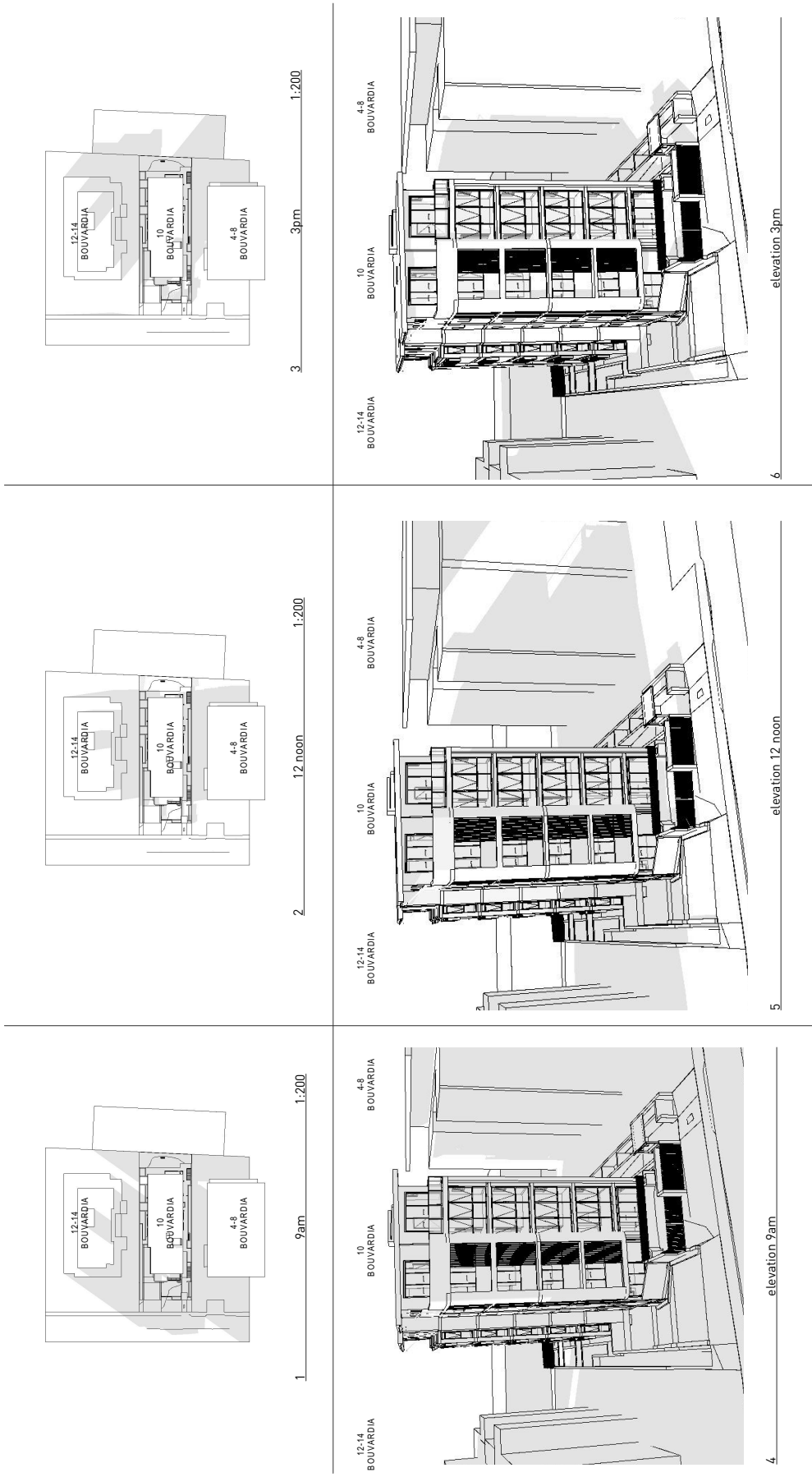
PROJECT
BOUVARDIA

DATE
S4.55 MODIFICATION APPLICATION

MODEL NO.
S4.55 MODIFICATION APPLICATION



ATTACHMENT 1 - ITEM 1



RDA ARCHITECTS PTY LTD
 2/48 BROADWAY
 E: info@rdaarchitects.com.au
 ABR 18 67 622 548
 RDA ARCHITECTS NO
 1/100 BROADWAY
 Hornsby Shire Council

NOTES
 1. For use of design, use figures in brackets only.
 2. Dimensions are all prior to construction & represent approximations to the finished work.
 3. All dimensions should be checked by the contractor at every stage. Discrepancies should be reported to the architect immediately.
 4. The copyright of this design remains the property of RDA ARCHITECTS. This design is not to be used for any other project without the written consent of RDA ARCHITECTS.
 5. RDA ARCHITECTS is not responsible for any construction errors or omissions that may occur. Do not use this drawing for construction unless approved.

NOTES
 Please refer to the notes page for a legend that includes further notes and an explanation of abbreviations.



REVISION	DATE	NOTES
1	20/04/2020	ISSUED FOR SUBMISSION

DRAWN BY
 SHADOW DIAGRAMS
 DRAWING NUMBER
S4.55_3-A-900
 REVISED
 REV/A - 20/04/2020
 SCALE
 FOR S4.55 SUBMISSION

PROJECT
 BOUVARDIA
 10 BOUVARDIA STREET, ASQUITH
 BLUESTONE DEVELOPMENTS
 S4.55 MODIFICATION APPLICATION
 CLIENT
 BLUESTONE DEVELOPMENTS
 22_018 S4.55_3-A-900

ATTACHMENT 1 - ITEM 1